



KELLER INTERNATIONAL, LLC

1431 LAKE RD, HAMLIN NY 14464

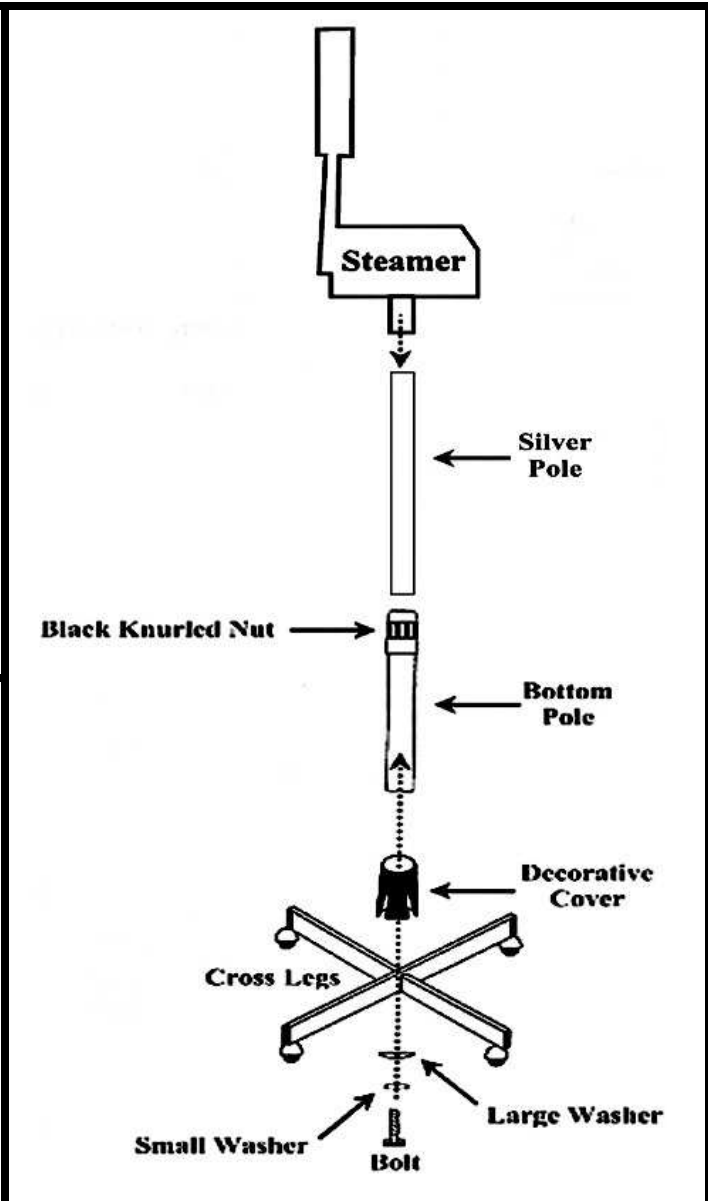
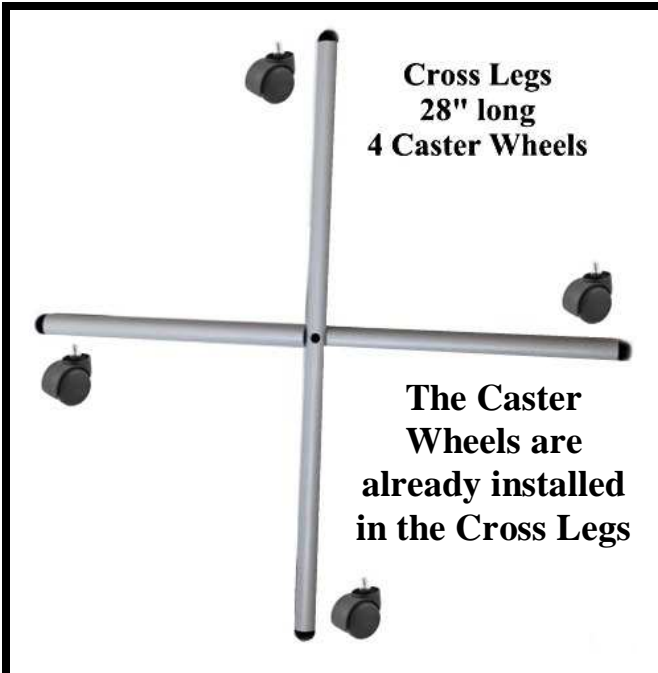
Info@kellerinternational.com

T: 1-800-578-8772 • F: 1-585-964-8093

KELLER4SALON.COM

Facial Steamer with Magnifying Lamp TD201 – TD206 Directions





- Assemble the Castor Base as shown in the pictures above.
 - The bolt can be tightened with a 14mm socket wrench or an adjustable wrench.
 - Tighten the bolt securely or the unit may wobble.
 - After assembling the Castor Base – attach the Steamer.
- NOTE: Attach the Magnifying Lamp Bracket before attaching the Steamer (see pg.3).**



The Magnifying Lamp Bracket can be attached by sliding it over the silver pole – there is no Up or Down.

The Magnifying Lamp Bracket will naturally ride to the bottom of the Silver Pole no matter how high the Steamer assembly is raised.



A = Bottom Pole with the Black Knurled Nut removed.

- Fingers revealed.

B = Silver Pole inserted into Bottom Pole.

- Silver Pole inside ALL the Fingers.
- Attach the Magnifying Lamp Bracket NOW.

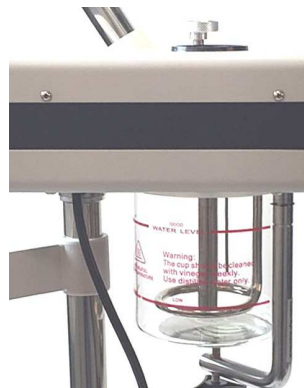
C = Slide Black Knurled Nut over the Silver Pole.

D = Black Knurled Nut is tightened onto the threaded portion of the bottom pole. Tighten by hand until the silver pole doesn't move.



- Once the Caster Base is assembled, attach the Steamer by inserting the Steamer Post (see picture at left) into the top of the Silver Pole.
- If the completed assembly seems wobbly, tighten the Bolt in the Bottom of the Caster Base until it stops.
- Attach the Magnifying Lamp and check that the whole assembly is balanced.
- See page 4.

Steam Passes Through a UV Lamp inside the Steamer Arm before exiting.



- **Install the Glass Jar with the Gasket.**
 - The Glass Jar & Gasket must be seated flush before the Glass Jar Holder is tightened.
 - Always fill the Glass Jar from the Top of the Steamer.
 - Make sure the Glass Jar water levels are maintained (see farthest left picture).
- **Only use Distilled or Filtered Water.**

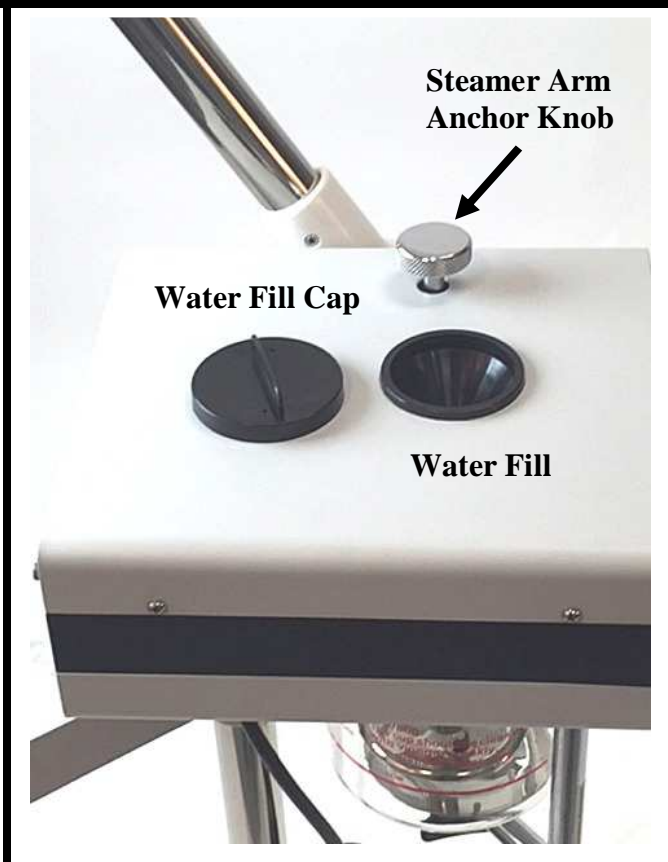


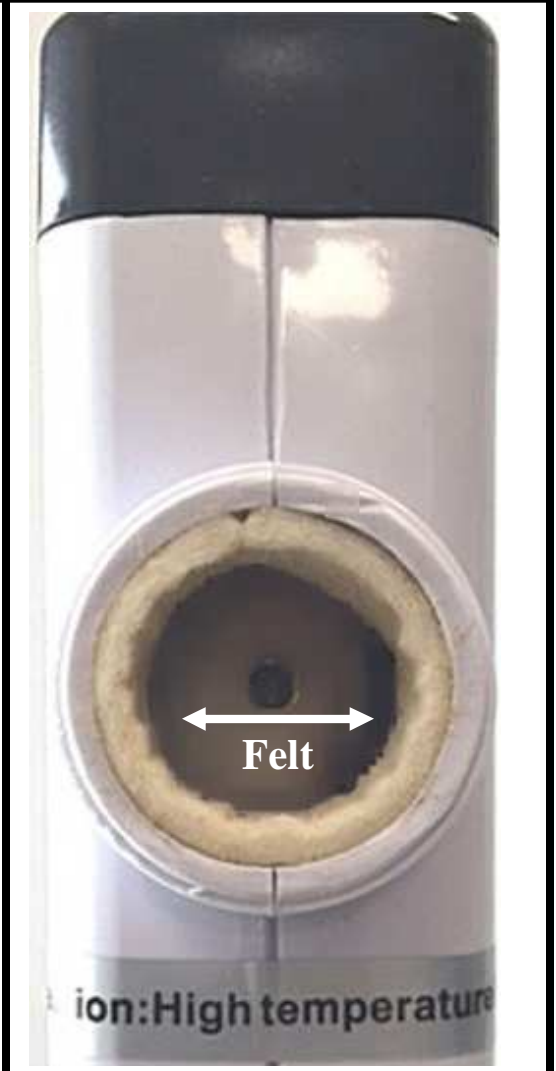
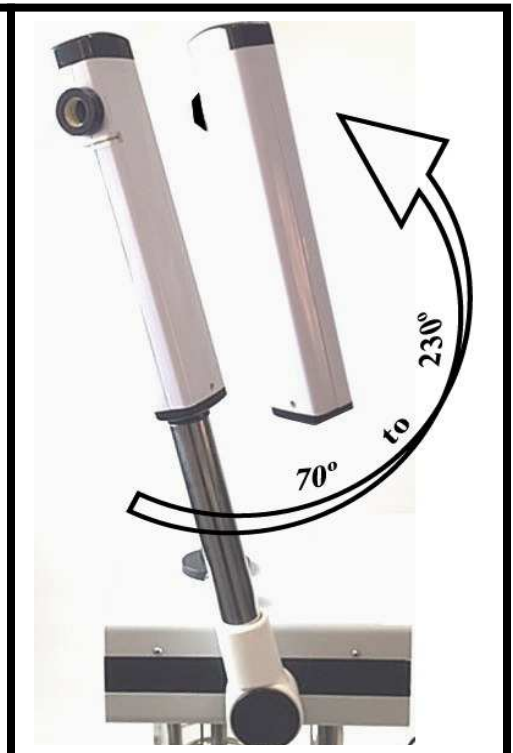
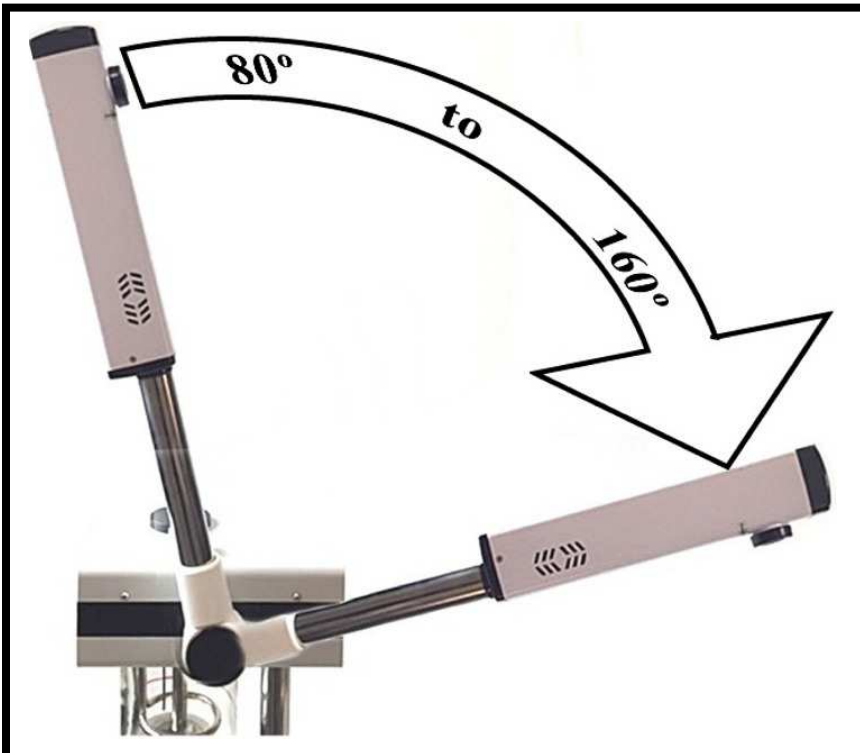
CAUTION: The Rubber Gasket must be covering the lip of the Glass Water Jar (above right picture) before installation. Make sure the Rubber Gasket is properly seated before tightening the Glass Jar Holder.

CAUTION: USE ONLY DISTILLED or FILTERED WATER in this STEAMER. Using Tap Water will eventually cause the unit to malfunction due to calcium and mineral deposits.

- Steamer will not operate unless water level is between the RED Low Line and RED Good Water Level. Steamer shuts off automatically if water level falls below “LOW.”

CAUTION: Turn the Steamer head away from the clients’ face before starting. Spurting water means the Glass Jar is too full or essential oils have been added to the water.







The Magnifying Lamp provides magnification (5X) and glare free light when analyzing the client's skin.

Use the Magnifying Lamp to examine the client's skin to determine the right treatment.

- **Magnifying Light provides magnification (5X) and Glare Free Light.**
- **Magnifying Light can also be used as a Soothing Light Source in a dark room.**
- **Protect the client's eyes with eye pads if the Magnifying Lamp is placed directly over the clients face.**



- Turn Timer Dial Clockwise to start the Timer.
- Maximum thirty (30) minutes in 1 minute increments.
- Timer ticks until finished and then dings to alert that timer is off.

Facial Steamer Benefits:

- Vapor mist softens dead skin surface cells.
- Opens follicles so they can be properly cleansed.
- Helps open pores to eliminate toxins.
- Temporarily softens superficial lines.
- Increases blood circulation.
- Improves cell metabolism.
- This unit contains a UV Ozone Generator in the Steamer Arm.
 - Ozone is a form of Oxygen used as a disinfectant.
 - As the Steam passes through the Generator, it is charged with ions of electricity.
 - This Ionized Mist may have an anti-bacterial action that's beneficial to the skin.

Facial Steamer Maintenance:

- Steamer will not operate without water.
- Must use Distilled or Filtered Water to prevent calcium and mineral deposits on the heating element.
- Steamer turns "OFF" automatically when water level is too low.
- Gurgling Sounds or Water Spurting from the Steamer Arm usually means there is too much water in the Glass Water Jar (remove the Glass Water Jar and drain some of the water) or there is a contaminate in the water such as essential oils (use the Felt on page 6 to add Aroma Therapy to the Steamer).
- The Reservoir (inside the Fill Opening) and the Heating Elements (inside the Glass Water Jar) should be cleaned once a week by filling them with a solution of Distilled Water and White Vinegar (mixed at 1 cup of White Vinegar to 1 quart of Distilled Water).
 - Allow to stand overnight.
 - Next day, empty Reservoir and Glass Water Jar, rinse and then store for future use.

Facial Steamer Information:

- Expect up to 10 minutes for the Steamer to start producing the Mist.
- It is important to turn the Steamer on at the beginning of each treatment so that the Mist will be ready when it is needed.
- When preparing to use the Mist, the Head of the Steamer Arm should be turned away from the clients face.
- Once the Mist is flowing steadily, the Head of the Steamer Arm can be turned toward the clients face.
- The Mist should be at least 16 inches from the clients face because the Mist will cool to lukewarm as it travels through the air.
 - Lukewarm Mist will keep the client's skin from perspiring.
 - If the skin perspires, water is drawn from the skin & dehydration is increased.

NOTE: There is much more information concerning the use of a Facial Steamer and these line items are not exhaustive. As a Professional Esthetician, it is buyer's responsibility to know how to safely use this equipment. Follow all applicable regulations for your State.

NOTES

A large, empty rectangular box with a black border, intended for taking notes. It occupies the majority of the page's vertical space.