

K7666 Assembly Instructions



Taylor Styling Station

K7666A, K7666B (x2)



Taylor Station Stand

K7666B, K7666D



Taylor Leg Styling Station

K7666A, K7666B, K7666C

Items Required for Assembly:

- These instructions will cover all combinations to Taylor Collection modular cabinet system.
 - K7666A (Large Countertop)
 - K7666B (Base)
 - K7666C (Legs)
 - K7666D (Small Countertop)
- Tools Needed: Phillips Head Screwdriver

Note: Instructions will be shown in our White variant, but all steps are the same for our Black variant.

Each K7666B (Base) should be supplied with the following accessories:

- Wooden Dowel Pins (Qty. 4)
- Cam Lock Nuts (Qty. 4)
- Cam Lock Screws (Qty. 4)
- Base Feet (Qty. 4)

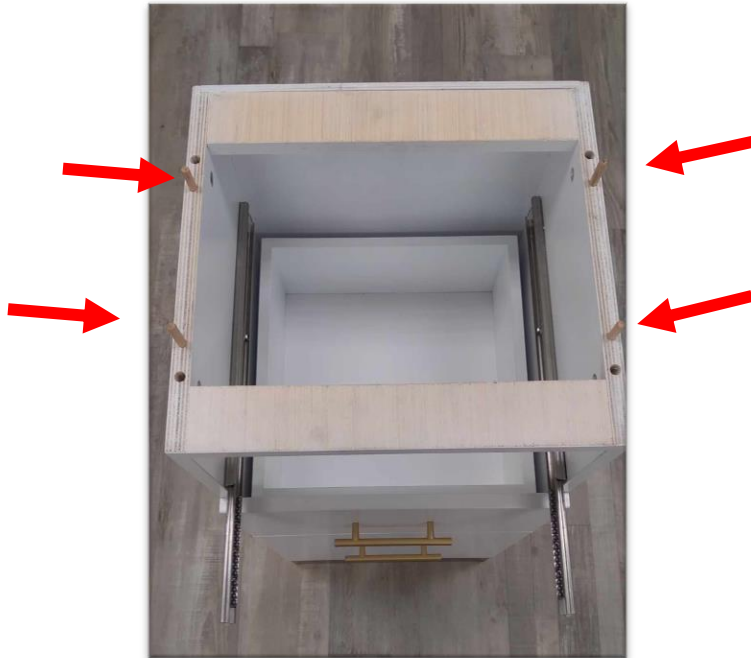
1) Remove handles facing the inside of each drawer. Assemble handles onto the front of each drawer using a Phillips head screwdriver.



2) Remove the top drawer. To remove the drawer, fully extend the drawer, press down on the right-side tab and press up on the left-side tab to release from the rails.

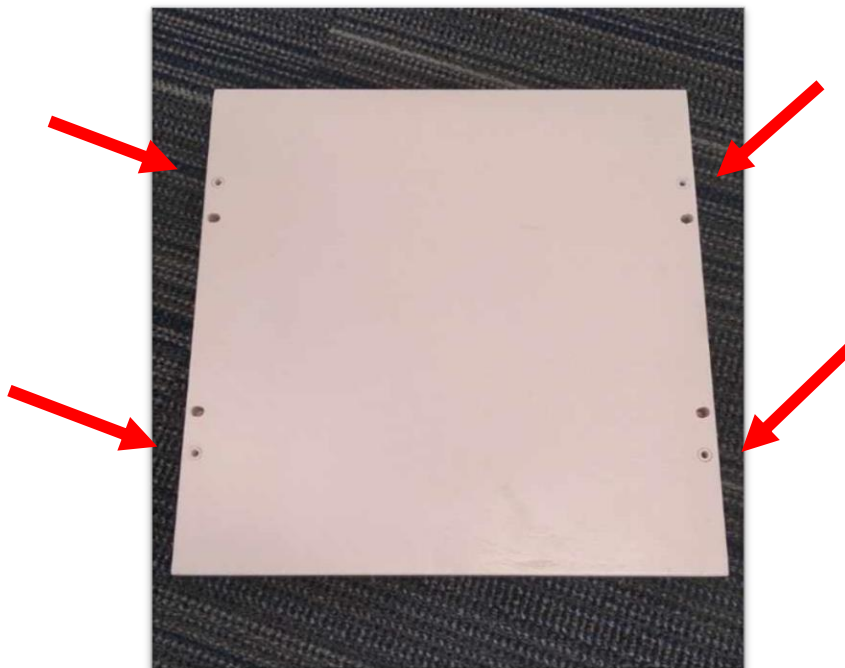


3) Take the wooden dowel pins and place them in the inner holes on the topside of the base. To further secure the countertop, you can use a small amount of wood glue on the wooden dowels.



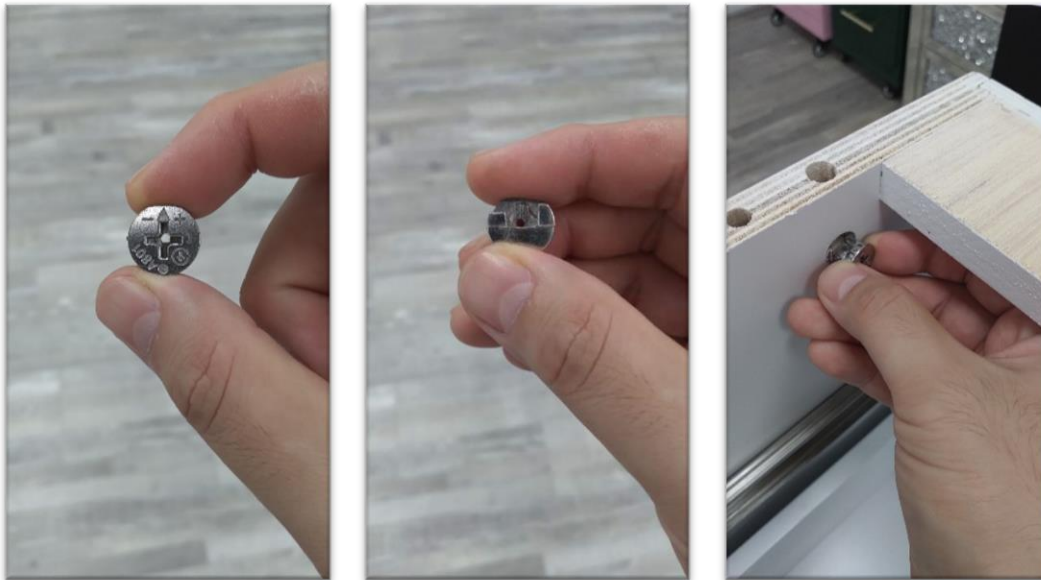
Note: If you ordered the Taylor Styling Station, repeat the previous steps for the second base.

4) Take the K7666D (Small Counter Top) and place upside down on the floor and place the cam lock screws in the outer holes.



5) If you ordered the Taylor Styling Station, which includes the K7666A (Large Counter Top), repeat step 4 for the other side of the counter top. If you ordered the Taylor Leg Styling Station, which contains K7666C (Legs) do NOT use cam lock screws for the side you are placing the legs and continue on to step 10.

6) Take the cam lock screws and place them with the gap in the back and facing upward in each of the holes on the inside of the top drawer you removed earlier.



Note: If ordered the Taylor Styling Station, repeat this step for second base

7) Take your countertop and place it over the base and lock it down using a Phillips head screwdriver. It is recommended that two people move the whole unit.



8) Re-attach your drawer to the rails. Make sure the rails inside the base are fully extended and lined up straight to ensure the drawer is seated correctly.



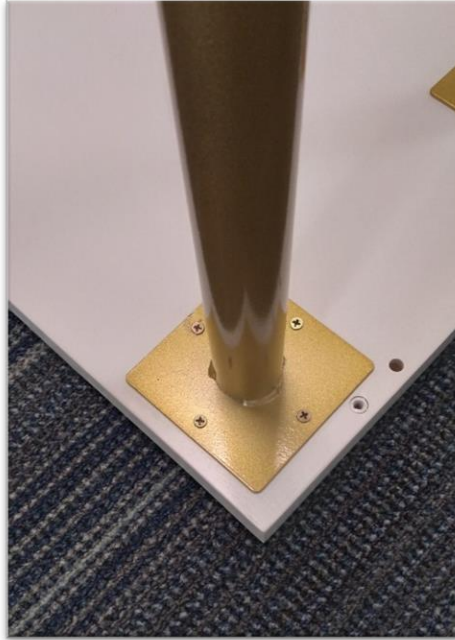
Note: The drawer will feel stiff when re-inserted. Just open and close the drawer a few times to free it up.

9) Assembly for the Taylor Station Stand and Taylor Styling Station (2 bases) is now complete.



The following instructions are for the Taylor Leg Styling Station.
Complete steps 1-4 and move on to step 10.

10) Take the legs and the screws provided. Center the legs away $\frac{1}{4}$ to $\frac{1}{2}$ inch spacing from the edge and use the screws to secure the legs to the Large Counter Top.



11) Continue on with steps 6 - 8. Once those are done you will be finished with the assembly of the Taylor Leg Styling Station. (Boxes K7666A, K7666B and K7666C).



Note: Keller International does NOT claim any responsibility for damages due to modifications done to the shampoo unit or damages due to negligence and any damages from improper setup to the plumbing done for this shampoo unit.