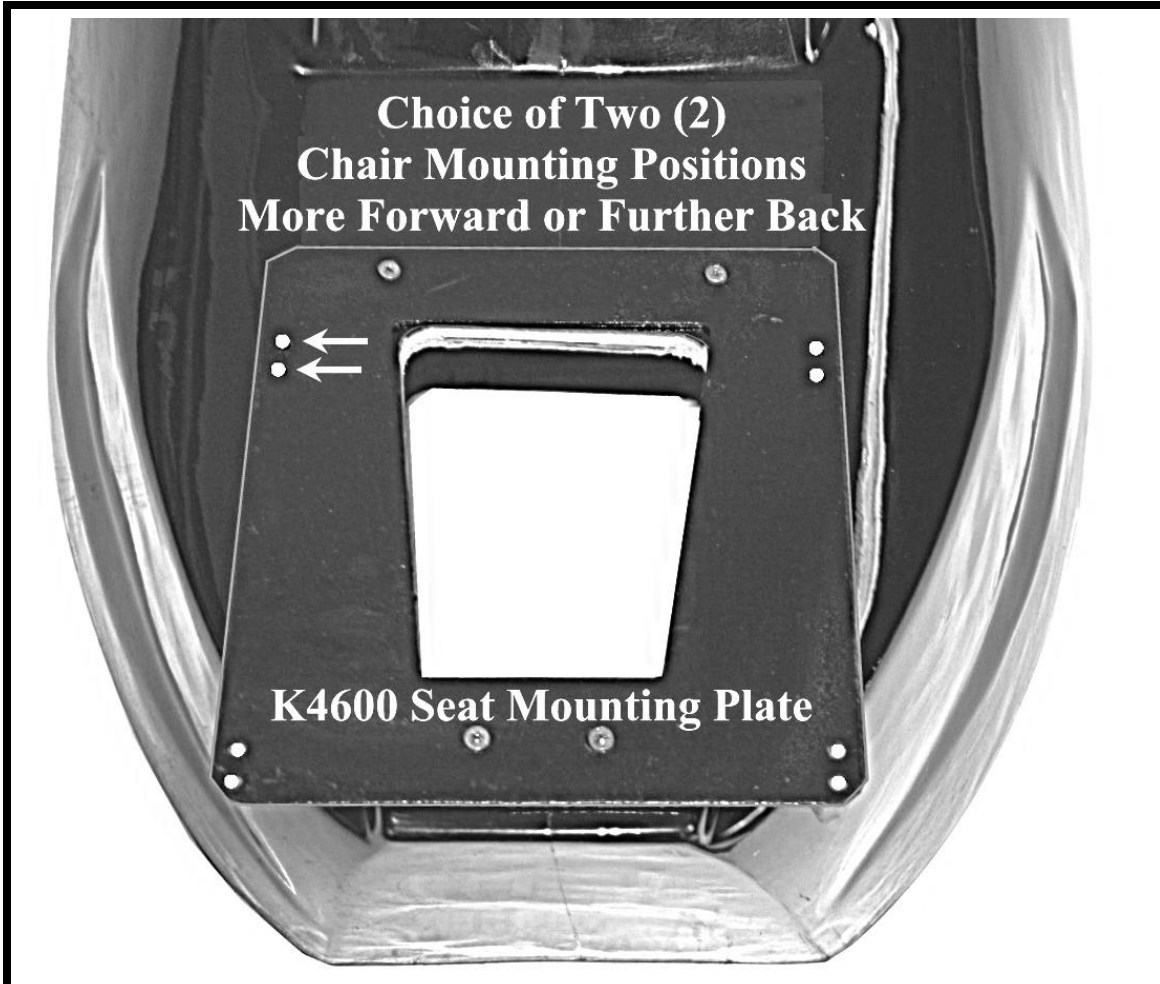


K4119, K4600, & K4770 Assembly **Directions**



- All parts are delivered inside one (1) shipping box.
 - The base, the bowl and the chair

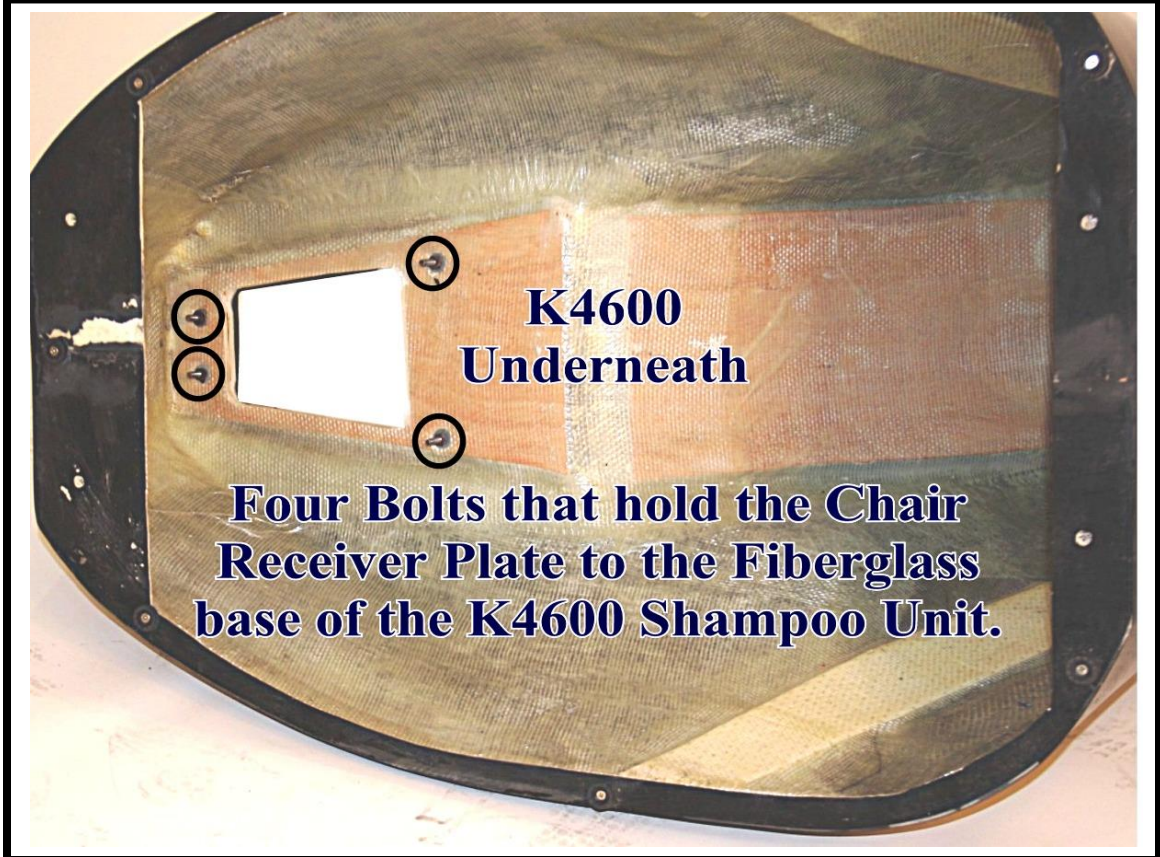
NOTE: A qualified Plumber should be employed to assemble this Shampoo Backwash Unit. Install in a waterproof environment (for example on a tile or concrete floor). Wood floors should not be used without first putting down a waterproof rubber mat.



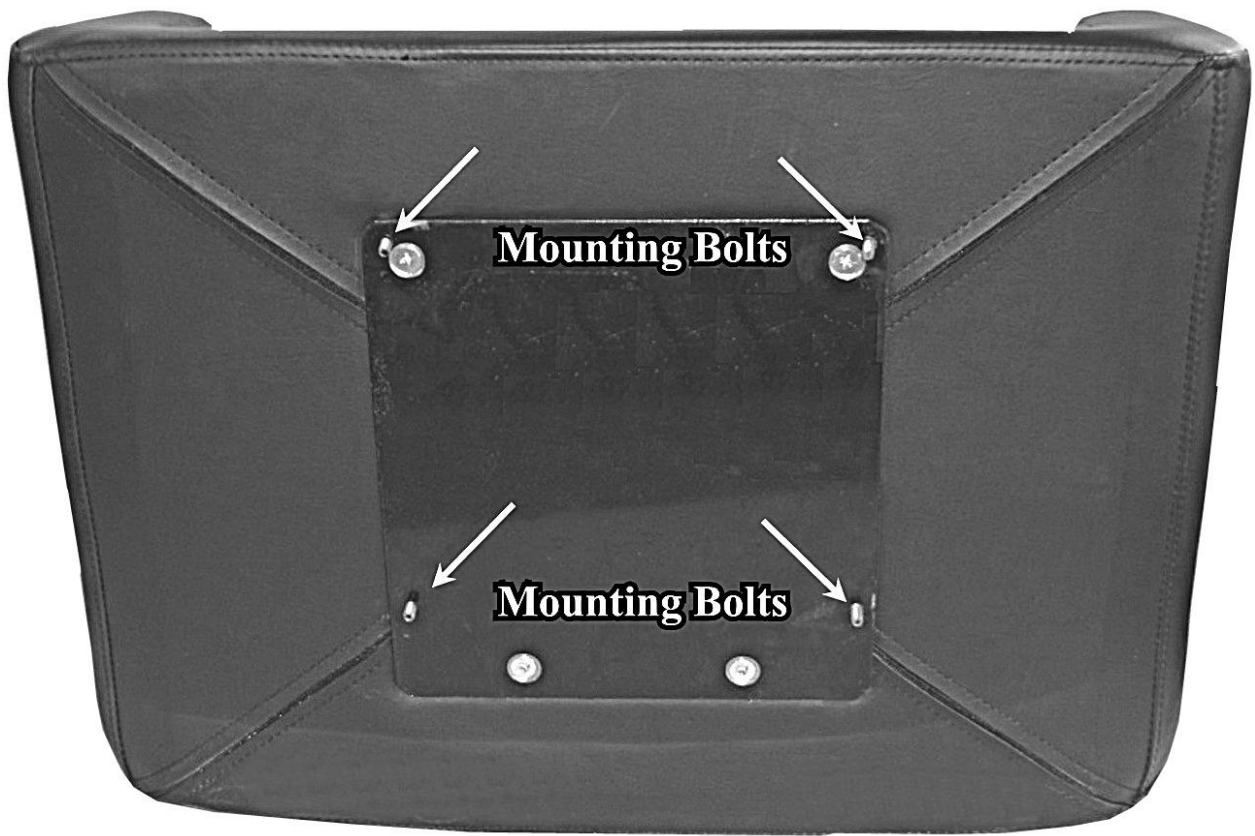
Remove the Seat Mounting Plate and attach it to the bottom of the Chair Seat.

This is the easiest way to connect the Chair Seat to the Base.

See the next picture.



Remove the nuts and washers that hold the Seat Mounting Plate to the Base and attach the Seat Mounting Plate to the bottom of the Chair Seat Cushion.



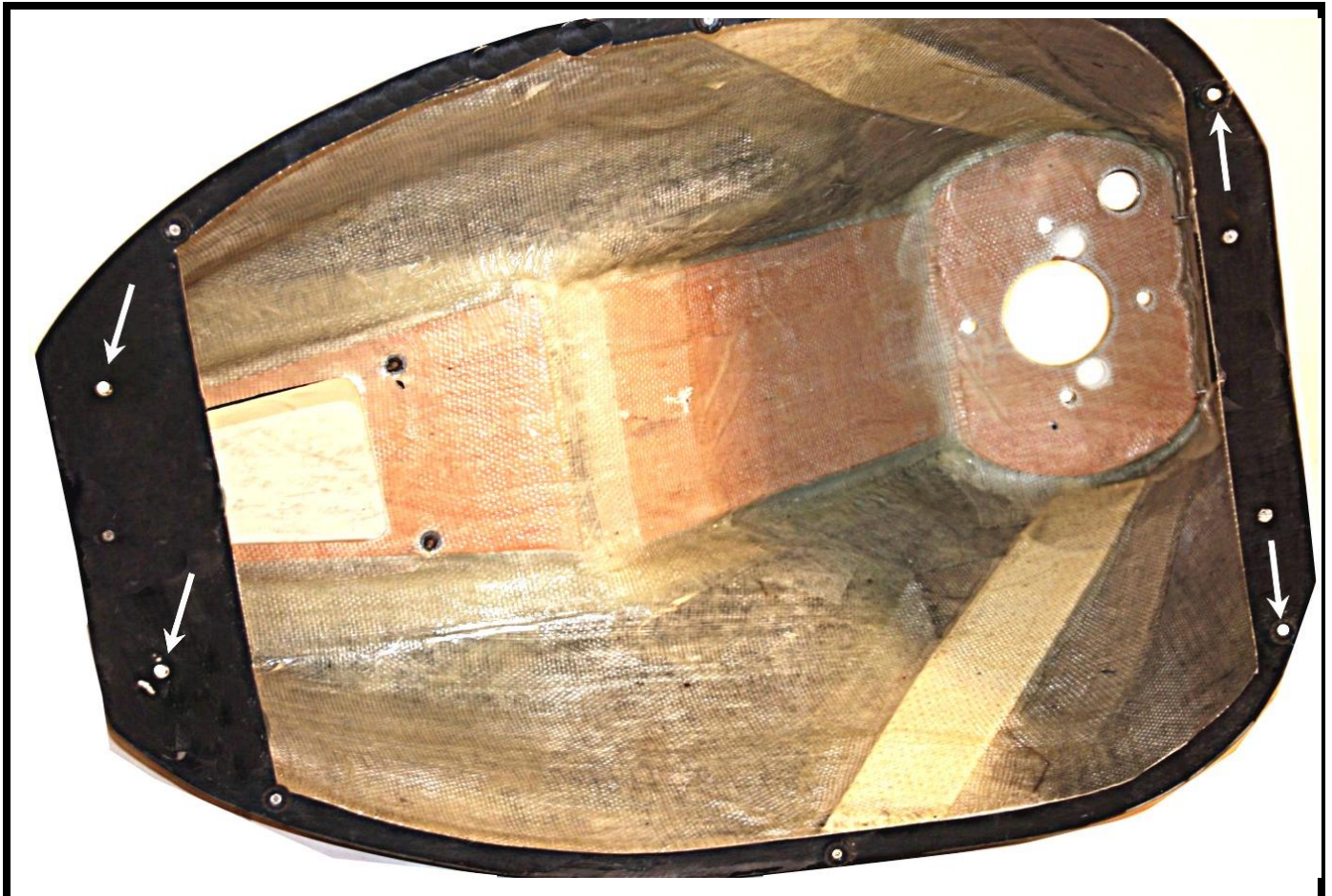
The picture above shows the bottom of the Chair Seat with the Mounting Bolts.

Attach the Seat Mounting Plate to the Mounting Bolts on the bottom of the Chair Seat Cushion.

Attach the completed assembly to the Base using the nuts and washers from page 2.

Position the Shampoo Base where desired.

Plumber should anchor the Base to the floor and attach all plumbing & fixtures.



- **The arrows show the Anchor Holes for bolting the unit to the floor.**
 - **The little rubber feet on the bottom of the Base should be removed before anchoring this unit to the floor.**
 - **Removing the little rubber feet is up to the purchaser.**
- **The Anchors used to secure the Base to the floor should be appropriate for the floor type (cement, tile, wood, carpeted, etc.)**



- **Attach the Bowl to the Base using the large washers and nuts provided.**
- **Attach all the fixtures.**

NOTE: Vacuum Breakers are sold separately. Check your Local Plumbing Codes to see if they are needed.

- **Attach the Flexible Waste Water Hose. See page 5.**