

# K4178 Assembly Instructions



## Items Required for Assembly:

- K4178 Box: Shampoo Unit
- K4178 Bowl Box: Porcelain Bowl
- A203 Box: Faucet and Parts
- 10mm socket wrench (not included)

Note: A professional plumber should be employed to assemble this shampoo unit. This unit is ideal for tile and concrete floors. Wood floors should not be used without a waterproof rubber mat.

Unpack Box (2 people): Remove Shampoo unit from box then remove Porcelain Bowl from box.



Parts Included:

Drain Hose and Clamp

Nuts and Washers

1) Remove the 4 bolts holding the backing using a 10mm socket wrench.



2) Place Porcelain Bowl on top of mounting plate and attach using the included washers and nuts.



3) Attach the Clamp as high up on the Drain of the Porcelain Bowl then attach your Drain Hose. Bring the Clamp down onto the Drain Hose so the Clamp is grabbing the Drain Hose and Drain.

4) Find the A110A (single handle faucet) box (box 2) and A203 Hose.



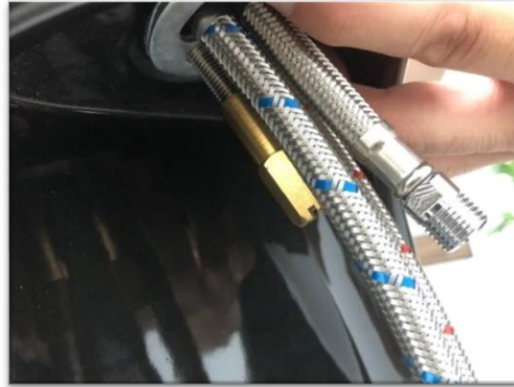
5) Remove metal collar and matching rubber gasket by unscrewing the brass fitting. Leave the round rubber gasket on under the faucet.



6) Feed the lines of the faucet into the round hole of the bowl. Making sure the round gasket is underneath the faucet.

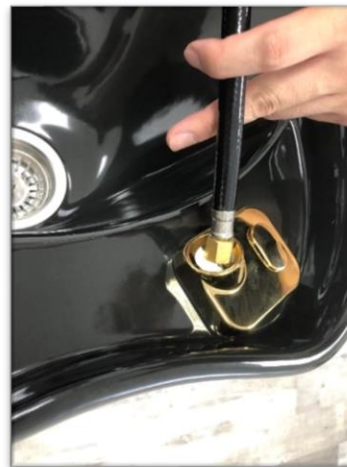


7) Replace the metal collar and matching rubber gasket onto the faucet; tighten back on the brass fitting.



Note: Be sure to place the faucet in the direction you want before tightening down.

8) Feed the A203 Shower Hose and Head through the hole on the Vacuum Breaker plate and cap on the plate as well.



9) Take the A203 Shower Hose and Head and connect it to the faucet.



10) Feed the lines of the faucet into the hole of the mounting plate.



Note: Feeding the Shower Hose through the mounting plate holes and back up to the faucet will restrict the length of hose to the Porcelain Bowl.

11) Assembly of your Shampoo Unit is complete. Contact a plumber to finalize plumbing and placement then place backing back on to the shampoo unit using the 10mm socket wrench.

Note: Keller International does NOT claim any responsibility for damages due to modifications done to the shampoo unit or damages due to negligence and any damages from improper setup to the plumbing done for this shampoo unit.