

K4058 Assembly Instructions



Items Required for Assembly:

- K4058 Box: Chair Base, Porcelain Bowl, Chair Top & Parts Bag
- A203 Box: Faucet and Parts
- Tools Needed: Phillips Head Screwdriver, 10mm Wrench

Note: A professional plumber should be employed to assemble this shampoo unit. This unit is ideal for tile and concrete floors. Wood floors should not be used without a waterproof rubber mat.

Unpack Box (2 people): Remove items in the following order, Chair Top, Base and Porcelain Bowl.



Parts Bag Includes:

Neck rest

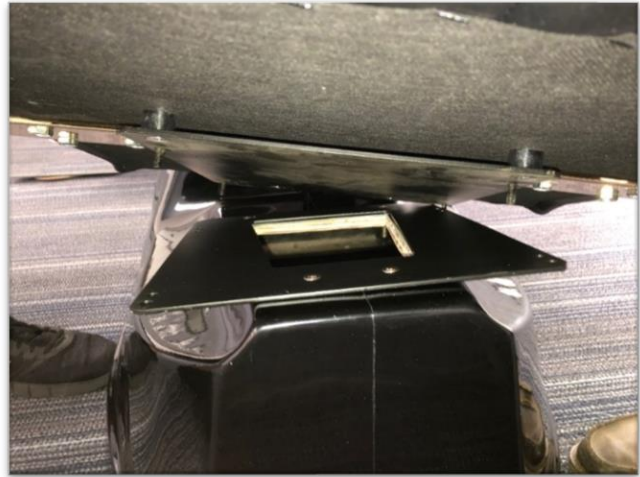
Shower Head**

Nuts, Washers, Anchors

Drain Hose

****Note:** The A203 Shower Head that is included in your order is not the same Shower Head that is included in the box. It is recommended you install the A203 Shower Head.

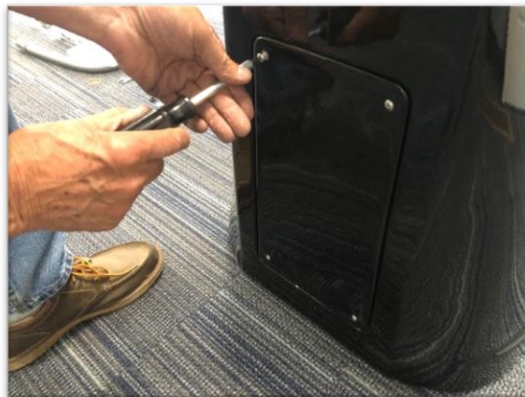
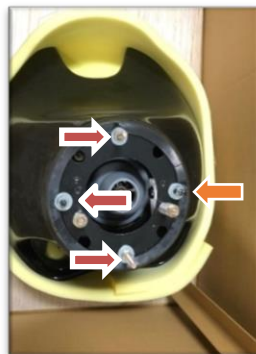
1) Place Chair Top onto the mounting plate. Choose between the front or rear holes to determine the distance your chair top will be from bowl.



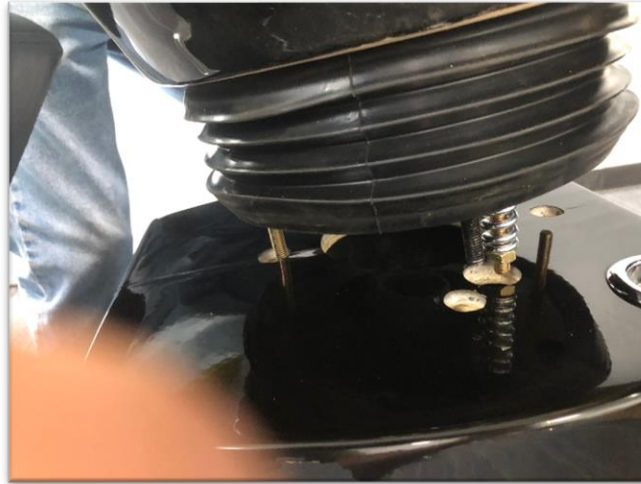
2) Using (1) washer and (1) nut tighten down chair top to the mounting plate. A 10mm wrench (not provided) is needed to tighten down the rear nuts.



3) Remove nuts and washers from bowl and set aside. Unscrew the back panel of shampoo base.

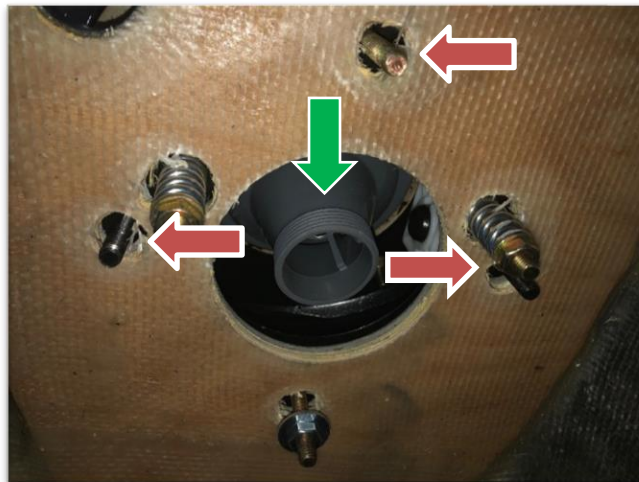


4) Place bowl on top of the base. Ensure correct orientation with neck rest facing the chair.



5) Taking the nuts and washers you previously removed from the bowl, place them back on the mounted bowl that is now on the base.

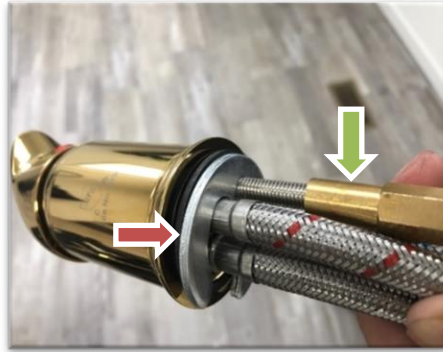
6) Take Drain Hose and screw to bottom of the drain (indicated by the green arrow).



7) Find the A110A (single handle faucet) box (box 2) with vacuum Breaker plate, and A203 Hose.



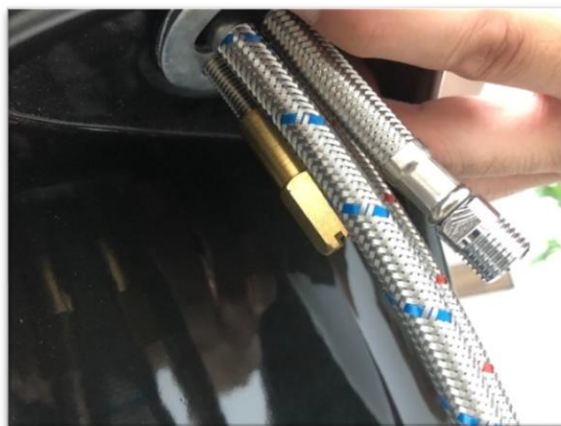
8) Remove metal collar and matching rubber gasket by unscrewing the brass fitting. Leave the round rubber gasket on under the faucet.



9) Feed the lines of the faucet into the round hole of the bowl. Making sure the round gasket is underneath the faucet.



10) Replace the metal collar and matching rubber gasket onto the faucet; tighten back on the brass fitting.



Note: Be sure to place the faucet in the direction you want before tightening down.

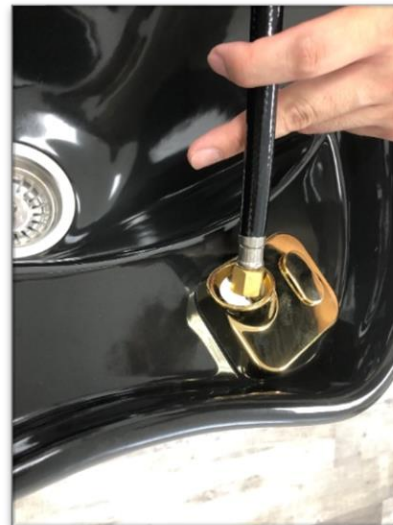
11) Loosely tighten down the Vacuum Breaker Plate clamp to the threads.



12) Place the Vacuum Breaker Plate on top of the square hole on the bowl with the clamp of the plate placed as shown and tighten down.



13) Feed the A203 Shower Hose and Head through the hole on the Vacuum Breaker plate and cap on the plate as well.



14) Take the A203 Shower Hose and Head and connect it to the faucet.



15) Feed the lines of the faucet into the hole of the base.



16) Assembly of your Shampoo Unit is complete. Contact a plumber to finalize plumbing to your unit.

Note: Keller International does NOT claim any responsibility for damages due to modifications done to the shampoo unit or damages due to negligence and any damages from improper setup to the plumbing done for this shampoo unit.