

K4002 Assembly Instructions



Items Required for Assembly:

- K4002 (3 Boxes): Porcelain Bowl Box, Base Box and Chair Box
- Tools Needed: Phillips Head Screwdriver, 10mm and 14 mm Socket Wrench
- A110A-Chrome Faucet (in separate box)

Note: A professional plumber should be employed to assemble this shampoo unit. This unit is ideal for tile and concrete floors. Wood floors should not be used without a waterproof rubber mat.

Unpack Box (2 people): Remove items in the following order, Porcelain Bowl, Base and Chair.



Parts in Porcelain Box:

- Drain Assembly (Blue Box)
- Vacuum Breaker Assembly (Vacuum Breaker, Silver Shower Head Hose and Vacuum Breaker Plate)
- Silver Shower Head
- Neck Rest
- Rubber Grommets (Qty. 3)



1) In the Base Box, remove the legs that are in a bag. Four legs screw in the chair and the fifth shorter leg with wood screws goes to the base.



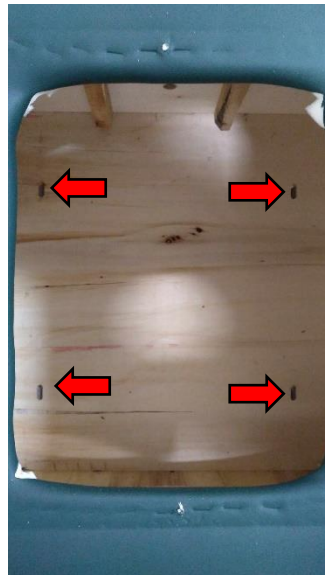
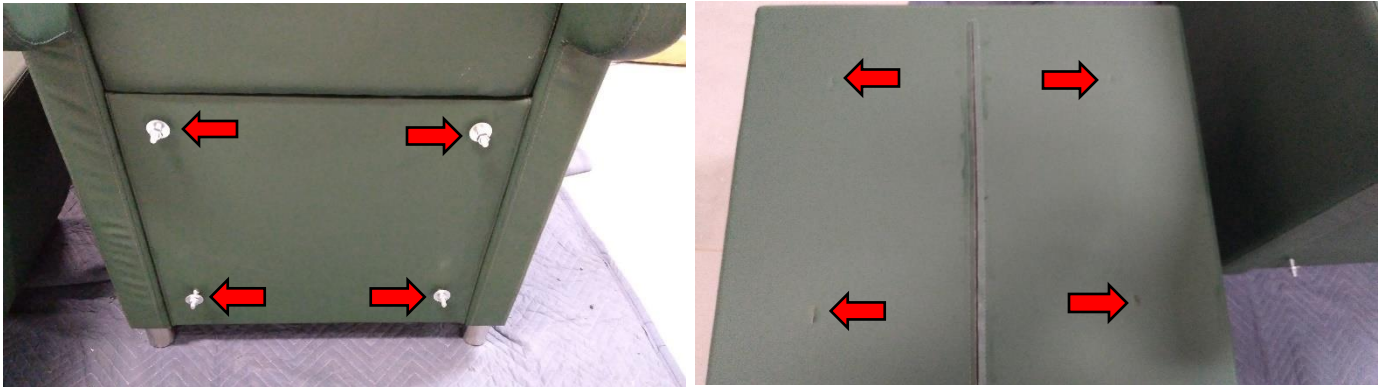
2) With the Chair out of the box, turn it on it's side and screw in the legs.



3) Take the shorter leg and screw it down with the wood screws in the center of the base as shown.



4) On the back of the Chair remove the nuts and washers and attach the Base using the nuts and washers on the inside of the Base.



5) Place the Porcelain Bowl upside down on a soft surface and remove the top washer and nut (1 is how they come and 2 is what you need for the next step). Set aside the top washer and nut for a future step.



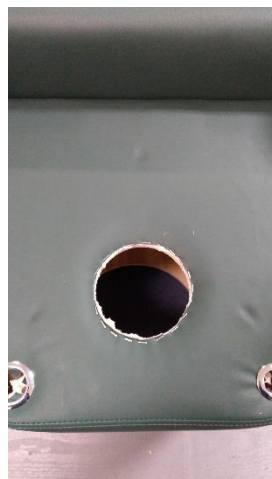
6) Insert the Grommet like so and tighten down in all 3 spots of the bowl.



7) Take the Drain and unscrew the grey collar and remove the black rubber seal. Leave the white seal on and insert the Drain upside down from the inside of the Porcelain Bowl and place the rubber seal and tighten down the collar.



8) On the top of the Base find the holes in the indented spots and make slits with a blade to make an opening for the Porcelain Bowl to sit.



9) Place the Porcelain Bowl on top of the Base and take the Top washers and nuts you removed earlier and tighten down the Bowl to the Base.



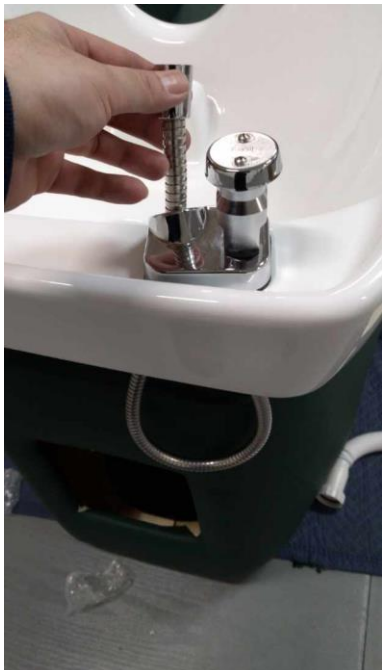
10) Take the Drain Hose and attach that to the bottom of the Drain. Please note that the Grey Drain Adapter in the previous pictures in steps 7 and 9 is used for a different type of drain hose and is determined by you and your plumber.



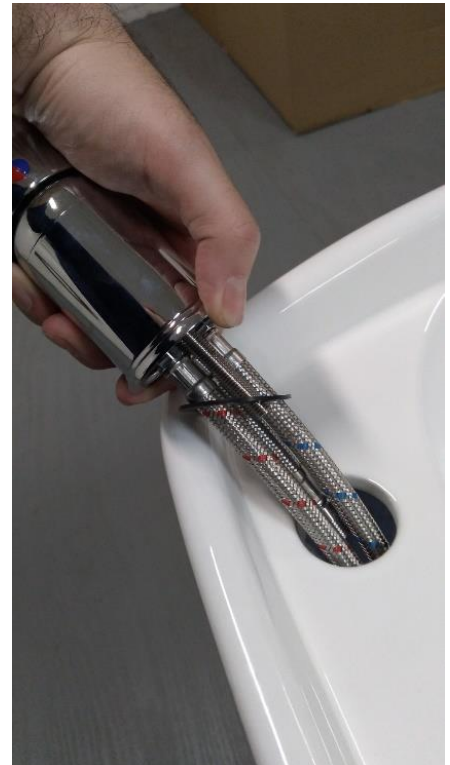
11) Take your Vacuum Breaker Assembly and unscrew the wing nut and remove the bracket then feed the lines through the square cut out on the top of the Porcelain Bowl and re-attach the bracket and wing nut to tighten the assembly down.



12) Take the flexible hose from the Vacuum Breaker Assembly and feed it upward through the round hole of the Vacuum Breaker Plate and attach the Sliver Shower Head.



13) Grab your faucet and remove the brass fitting, metal collar, and feed the faucet through the round hole of the Porcelain Bowl. Tighten down by putting back on the metal collar and brass fitting.



14) Connect the Silver Shower Head and Hose to the faucet with a $\frac{3}{4}$ inch to $\frac{1}{2}$ inch (female to male) NPT brass adapter fitting.



15) Take your Neck rest and insert it to the Porcelain Bowl and assembly of your shampoo unit is complete. Contact a plumber to finalize plumbing and placement then place backing back on to the shampoo unit



Note: Keller International does NOT claim any responsibility for damages due to modifications done to the shampoo unit or damages due to negligence and any damages from improper setup to the plumbing done for this shampoo unit.