

# Reynolds Barber Chair

## K2019-E Electric Barber Chair



**Durable PVC / Vinyl Upholstery**

**Seat Cushion: 20" wide by 19" deep**  
(seat cushion depth includes 3" of Leg Rest)

**Back Cushion: 25" wide by 19" high**

**Heavy Duty Synthetic Armrests**

**Armrests Inside Dimension: 20"**  
**Armrests Outside Dimension: 25"**

**Floor to Seat Lowest Height: 24"**  
**Floor to Seat Highest Height: 32"**

**Chair Ascends to Maximum Height in 18 seconds**  
**Chair Descends from Maximum Height in 10 seconds**

**Chair Reclines to Almost Flat in 14 seconds**  
**Chair Inclines to 90 degrees Upright in 10 seconds**

**Recline / Incline Button Located On Right Side Only**

**Swivel Locking Brake Pedals Located on Both Sides**

**Unit Swivels about 355 degrees (protects power cord)**

**Safe Weight Lift Capacity: 375 to 400 pounds**

**Voltage Requirements: 120 Volt AC**  
(220 Volt or ADHA Handicap Version - Special Order)



- 1. Chair comes completely assembled in the shipping container.**
- 2. Chair weighs about 230 pounds.**
- 3. Three (3) prong electric cord (not shown) exits from under the unit.**



**Reclining Information**

**Chair reclines about 70°**

**Leg Rest Pad Rises as  
the Chair Back Reclines**

**Maximum Length of  
Chair in the Totally  
Reclined Position:**

**54" up to 61" with the  
Headrest Extended**

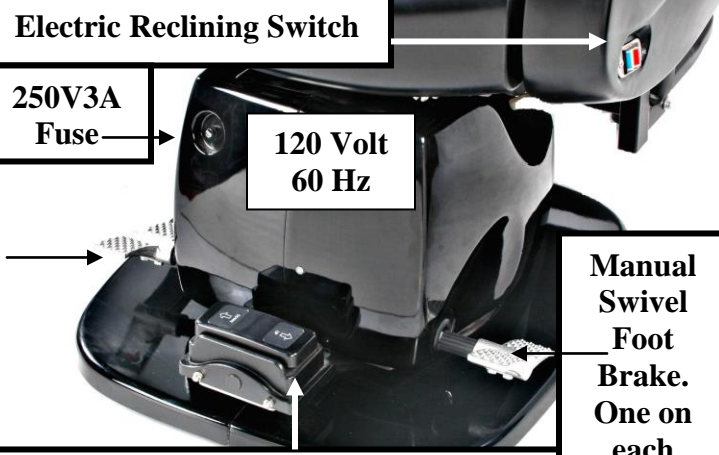


Reynolds Barber Chair

# Reynolds Barber Chair

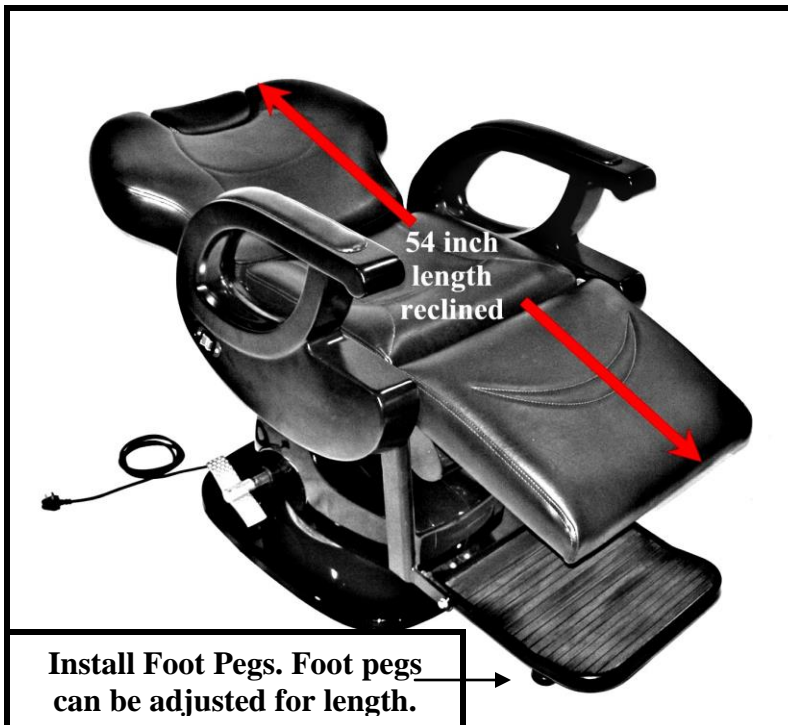
## K2019-E Electric Barber Chair

|  |   |  |
|--|---|--|
|  | <p><b>LIFT BY<br/>ARMS<br/>ONLY</b></p> | <p>Open shipping box by removing the four (4) Phillips Head screws at the bottom of the box – if you round out the head of the screw, you will need to drill out the screw.</p> <p><b>DO NOT CUT THE CARDBOARD SHIPPING BOX TO GAIN ACCESS AS YOU MAY CUT THE CHAIR.</b></p> <p>Remove bubble wrap and cushioning materials (DO NOT CUT).</p> <p><b>LIFT CHAIR OUT BY USING ARMS. DO NOT LIFT ANYWHERE ELSE AS THIS MAY CAUSE DAMAGE TO THE CHAIR.</b></p> |
| <p>Install Foot Pegs →</p>   |   |  |

|                                       |   |   |
|---------------------------------------|---|---|
| <p>Electric Reclining Switch →</p>    |  | <p>This chair will rotate 355 degrees before hitting a rotation stop. Check rotation to determine the actual back of the chair.</p> <p>Position chair where desired and plug in to a wall outlet (120V – 60 Hz).</p> <p>Check to see if chair rises and reclines.</p> |
| <p>250V3A Fuse →</p>                  | <p>120 Volt<br/>60 Hz</p>   |   |
| <p>Electric UP / DOWN Foot Switch</p> | <p>Manual Swivel Foot Brake. One on each side.</p>                                  |   |

**Step on manual swivel foot brake (backwards) to lock rotation. Step forwards to release the brake so the chair will rotate / spin.**





**CHAIR MUST BE ALL THE WAY DOWN BEFORE CUSTOMER ENTERS OR LEAVES THE CHAIR.**

**Adjust footpegs ¼" from Floor. This creates stability when stepped on by customer.**

**CUSTOMER SAFETY IS FIRST.**

**Install Foot Pegs. Foot pegs can be adjusted for length.**



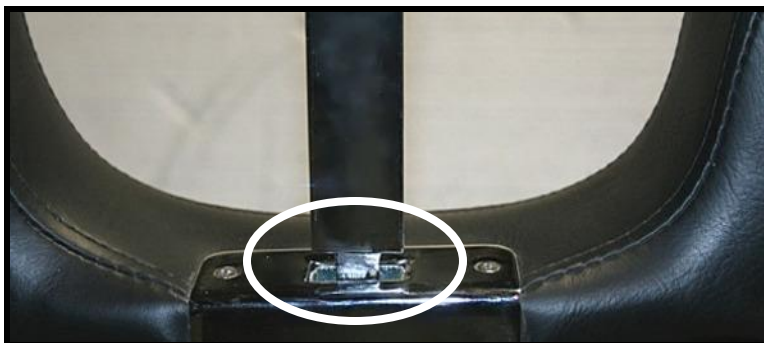
**Pull UP on the headrest to activate the headrest.**

**Headrest can be extended about 7 inches.**

**To lower headrest – pull UP on the little T-Bar mechanism and HOLD UP while pushing DOWN on the headrest.**

**Headrest can be removed by pulling UP on the headrest until it comes out of the headrest channel.**

**To re-insert a removed headrest – pull UP on the T-Bar mechanism and hold – insert headrest into the headrest channel.**



**Headrest is pulled UP too far – will not return to its channel without lifting UP on the T-Bar mechanism.**



#### **Professional Safety Rules - Do's and Don't**

- **Never place chair on thick rug or foam mat.**
- **Adjust footpegs to be slightly off the floor without scraping.**
- **Chair needs to be in full down position when customer enters or exits chair.**
- **Brake should be used to prevent unwanted side movement at all times except to rotate customer.**
- **Chair top lengthwise alignment to base lengthwise needs to be the working alignment when reclining the chair or entering and exiting the chair.**
- **Never allow 120 volt cord to become frayed or damaged.**
- **Inspect chair monthly for any maintenance issues.**
- **Assist and Instruct your customer in and out of the chair always.**