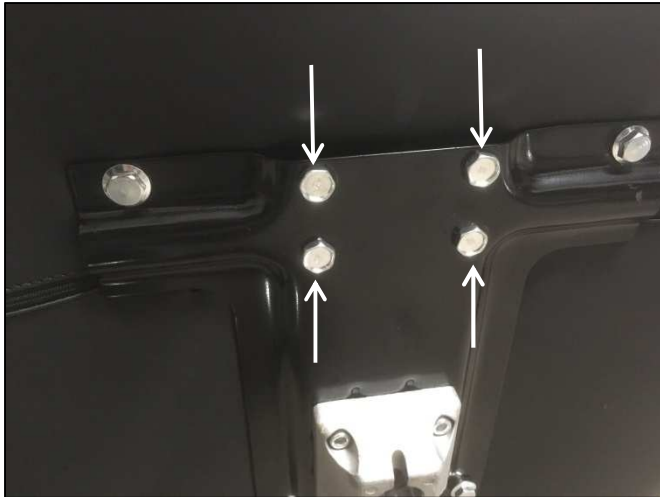


## ASSEMBLING YOUR **KELLER** SALON CHAIR

Luna (K1129) – Illusion (K1139) – Poly (K1149) – Glitz (K1167) – Glam (K1168-T) & Glam II (K1168C-T)



Using a 14 MM (or a 9/16") open-end wrench, remove the 4 bolts as indicated by the arrows.

Line up the holes with the holes on the mounting plate of the footrest and re-insert the bolts. Note: Leave the bolts loose until all 4 have been installed – then tighten them down.



Once the footrest is installed take the chair-top and set it on top of the pump-shaft as shown, lining up the **SLOT** with the **PIN**. (**NOTE**: The **SLOT** should be facing toward the **FRONT** of the chair)



Image shown on left is what your finished assembly should look like. **TIP**: sit in the chair and gently "BOUNCE" up and down in order to connect the chair-top to the pump shaft. This completes the assembly.

**NOTE**: When moving the chair **LOCK THE FOOTBALL** (Pump-pedal). Grab the **FOOTBALL** and use a strong hand-hold when moving the chair.