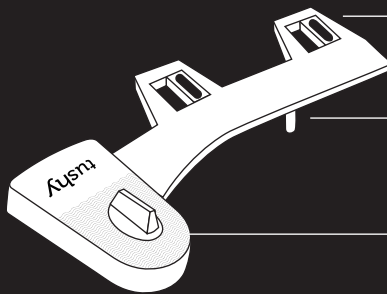


# tushy

FOR PEOPLE WHO POOP

**INSTALLATION IS EASIER  
THAN POOPING SOMETIMES!**

## KNOW YOUR TUSHY



Seat hooks

Spray outlet, which  
sprays your bum!

Water pressure  
control knob

### INCLUDED PARTS



### YOU MIGHT ALSO NEED



Adapter

Tushy Tube (80cm)



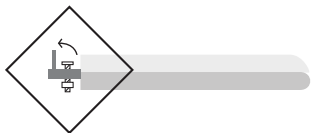
Wrench

Screwdriver

## PREP WORK

1

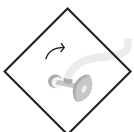
### REMOVE THE EXISTING TOILET SEAT



The screws are behind the seat. Flip up the screw caps using a flat head screwdriver in order to access the screws.

2

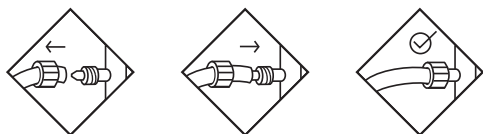
### TURN OFF THE WATER VALVE



Turn off water valve of the toilet and then flush toilet to drain tank completely.

3

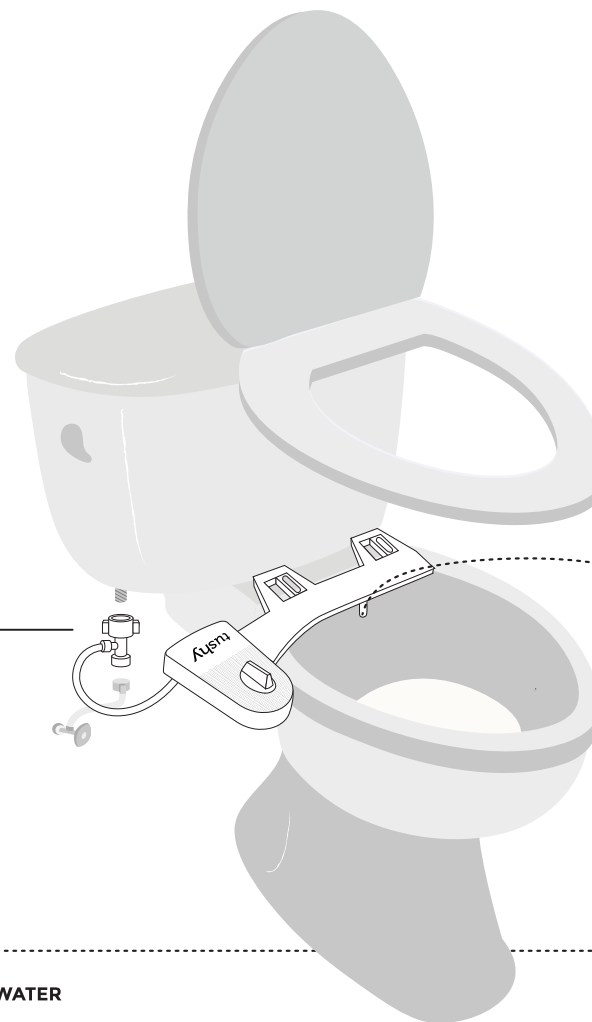
### ADAPTER



Unscrew the fastener from the port of the adapter and thread the tube through it. Slide the tube onto the port then screw the fastener onto the outside of the port.

# tushy

FOR PEOPLE WHO POOP



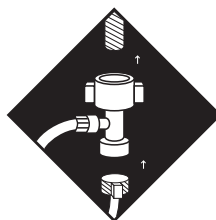
7

### USE TUSHY!

Use the Pressure knob & let the spraying glory begin!

5

### FOR COOL WATER



Install the **adapter** beneath water tank of your toilet for cool water supply. (Try turning right!)

6

### MAIN BODY



Connect the other end of the **white water tube** to Tushy. Put the toilet seat back and turn on the water valves. Make sure the connections are tight to avoid leakage.

## CONNECTION

## PRO TIPS

### YOUR FIRST TIME?

Be sure to take it easy when unscrewing your water valve. There may be some mineral build up - slow and steady wins the race. Try twisting it in one direction and then the other, each time rotating a little further until it's free to turn all the way around.

### PSST!

Over-tightening the adapter can cause damage to the threads and result in water leakage, so use only hand pressure at first. Rotate less than a quarter turn at a time, checking as you go for leaks.

### TROUBLE? WE GOT YOUR BACK!

If your spray outlet hole is clogged for some reason, simply try to move the spray outlet up and down a few times.

## HOW TO TUSHY

**DO YOUR BUSINESS**



**SPRAY WITH TUSHY**



**PAT DRY**



**TADAA!**