

# Stains and Finishes

## Lifeline Accents™



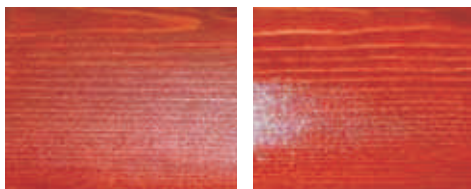
### Inspired Collection of Transparent Stains for Interiors and Exteriors

*Lifeline Accents* is our newest two-coat color finish developed to make your home look fashionable. *Lifeline Accents*, influenced by global trends, encouraged us to provide our customers with exciting new colors and style.

The new colors create a wonderful accent for your wood trim, interior and exterior walls, millwork, timber, furniture and other wood elements of your home.



- High coverage rate
- Clear coat with *Lifeline Advance* to complete the system for exterior and *Acrylic Gloss/Satin* or *Sure Shine* for interior
- Excellent UV protection
- Easy maintenance procedures
- Long lasting color retention



With Lifeline Advance Satin

With Lifeline Advance Gloss

Application techniques, wood species and other factors will affect the actual color when finished. We supply samples for evaluation on your specific wood.



Pickled White, #762



Evergreen, #770



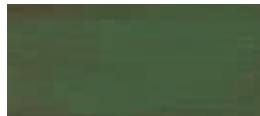
Spruce, #766



Midnight, #714



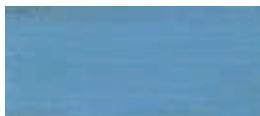
Espresso, #746



Jade, #774



Fern, #782



Azure, #718



Bordeaux, #738



Black Walnut, #742



Garnet, #726



Cinnabar, #730



Barn Red, #734



Newport, #722



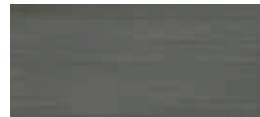
Sand, #754



Umber, #758



Forest, #778



Charcoal, #750

**Application Rates:**  
1st coat - 350 - 450 sq. ft. per gallon.  
2nd coat - 600-800 sq. ft. per gallon.

**# of Coats:**  
**For Exterior**  
Two coats application. Topcoat with Advance Gloss or Satin Clear Topcoat.

**For Interior**  
One or two coats application. Topcoat with Acrylic Gloss/Satin Clear Topcoat or Sure Shine Gloss or Satin.

**Clean up:**  
Soap and water.

**Packaging:**  
1 gallon container.  
5 gallon pail.  
Samples available.

**Storage/Shelf Life:**  
Freeze/thaw stable.  
1 year.



Washington 1-800-548-1231; Tennessee 1-800-548-3554; Montana 1-800-479-7090;  
Minnesota 1-877-244-6548; Colorado 1-800-433-8781  
[www.permachink.com](http://www.permachink.com)



# LIFELINE™ Accents™

## transparent EXTERIOR WOOD STAIN

### Extreme Durability and Longevity

Ideal for exterior walls, siding, trim, garage doors, window frames, doors, furniture, cabinets, millwork, etc.

- Water-Based
- Mold and Mildew Resistant
- Breathable
- Water Repellent

Available in 18 colors



Made in USA

CAUTION - DO NOT TAKE INTERNALLY

1 Gallon (approx 3.8 liters)

West 1-800-548-1231 East 1-800-548-3554 [www.permachink.com](http://www.permachink.com)

# LIFELINE™ Accents™

## Directions For Use on Exterior Wood Surfaces

### STEP #1: INSPECTION

Check for deterioration and decay. Remove and replace or repair deteriorated wood. Unsound wood should be repaired prior to applying LIFELINE ACCENTS. Contact any Perma-Chink Systems office for information about wood repairs.

### STEP #2: SURFACE PREPARATION

All surfaces should be free from mill glaze and contaminants including dirt, dust, mold and mildew, old finishes, water repellents and wax. Use appropriate Perma-Chink Systems products to remove existing finishes and/or to clean and prepare surfaces.

If a borate preservative has been previously applied, make sure it is completely dry before applying LIFELINE ACCENTS. If the surface is tacky or there are visible deposits on the wood, wash the surface with water and allow it to dry. DO NOT USE LIFELINE ACCENTS ON SURFACES THAT HAVE BEEN BRUSHED OR RUBBED WITH STEEL WOOL. IF YOU DO, RUST SPOTS MAY APPEAR UNDER THE FINISH. If more than a week has passed since the surface has been stripped or cleaned, wash down the logs with Log Wash™, rinse well and allow the surface to dry before applying LIFELINE ACCENTS.

If the surface has been media blasted or if the wood is rough and/or porous, apply a coat of Prelude™ Clear Wood Primer prior to the LIFELINE ACCENTS application. This will ensure proper color generation and add an extra measure of protection to the wood.

### STEP #3: APPLICATION

COVERAGE RATE – Coverage is approximately 350 – 450 square feet per gallon for the first coat and approximately 600 – 800 square feet per gallon for subsequent coats depending on wood type and porosity. DO NOT USE THINNERS.

STIR THOROUGHLY before and regularly during use. Wear rubber gloves to avoid stains to the skin and fingernails. If multiple containers are used on the job, they should be mixed together to ensure color consistency. LIFELINE ACCENTS can be applied with a brush or airless sprayer. DO NOT APPLY TO HOT SURFACES OR IN DIRECT SUNLIGHT. Do not apply when the surface temperature is below 40° F or above 90° F. Back brushing is required to work the finish into the wood for optimum performance. Always keep a "wet edge" to avoid lap marks.

#### CAUTION: PLEASE READ CAREFULLY!

DO NOT TAKE INTERNALLY. IF SWALLOWED, DRINK MILK. DO NOT INDUCE VOMITING. CONSULT A PHYSICIAN IMMEDIATELY. KEEP OUT OF REACH OF CHILDREN. KEEP CONTAINER TIGHTLY SEALED AFTER EACH USE. USE ONLY IN WELL VENTILATED AREA. DO NOT INHALE VAPORS. USE CAUTION WHEN APPLYING AROUND LAWNS AND SHRUBBERY.

LIFELINE ACCENTS should always be applied in thin coats. Wait for the first coat to dry (at least two hours depending on temperature and humidity) then apply a second coat. Always back brush to ensure even coverage and to avoid visible drips and runs. Once the LIFELINE ACCENTS has dried and you are satisfied with the appearance, apply one or two coats of LIFELINE ADVANCE Gloss or Satin clear topcoat. LIFELINE ADVANCE exterior clear topcoats enhance the beauty of the finish and play a significant role in protecting the wood against water, mold, and UV light, thus extending the life of the stain. Follow all application directions when applying Advance topcoat.

### STEP #4: CLEANUP

Clean area and equipment immediately with warm, soapy water. For sprayers and other commercial equipment, follow the manufacturer's directions. For removing LIFELINE ACCENTS that has dried, soften with alcohol or mineral spirits and then clean with warm water. Please do not pollute our environment. Dispose of containers and unused material in accordance with local, state and federal regulations.

### STEP #5: MAINTENANCE

Periodic cleaning with an appropriate cleaner such as Log Wash™ helps extend the life of the finish and accentuates the beauty of your home. We recommend that log walls be washed down at least twice a year. Wood checking, cracking and shrinkage may eventually expose unprotected wood. Apply periodic maintenance coats as needed paying special attention to the south and west sides of the home as they may have greater exposure to the elements.

### STEP #6: STORAGE

Store LIFELINE ACCENTS out of direct sunlight and protect from freezing. Although LIFELINE ACCENTS is freeze-thaw stable, if the product is accidentally frozen, allow it to thaw, mix well and check for suitability of use before applying.

Contact any Perma-Chink Systems office for additional information about applying and maintaining LIFELINE stains and finishes.

#### LIMITED WARRANTY

Perma-Chink Systems, Inc. warrants and represents that Perma-Chink Log Home Products will conform to the description and specifications previously set forth and be free from defects in material and workmanship when shipped to the buyer. EXCEPT WHEN HEREIN EXPRESSLY STATED, THERE ARE NO WARRANTIES, EXPRESSED OR IMPLIED, BY OPERATION OF LAW OR OTHERWISE, APPLICABLE TO THIS PRODUCT. PERMA-CHINK SYSTEMS EXPRESSLY DISCLAIMS ANY IMPLIED WARRANTY OF MERCHANTABILITY OR FITNESS FOR A PARTICULAR PURPOSE. To obtain a conditional extended warranty for the protection provided by LIFELINE Ultra-2 and LIFELINE Advance Clear Topcoat, contact any Perma-Chink Systems office and request a registration form.



West Coast 1-800-548-1231

East Coast 1-800-548-3554

[www.permachink.com](http://www.permachink.com)

rev 3/10

# Material Safety Data Sheet

**IDENTITY** (As Used on Label and List)  
LIFELINE ACCENTS EXTERIOR



## Section I

Manufacture's Name Perma-Chink Systems, Inc.	Emergency Telephone Number: CHEMTREC 1-800-424-9300
Address (Number, Street, City, State, and ZIP code) 1605 Prosser Road	Telephone Number for Information: 865-524-7343
Knoxville, TN 37914	Date of Preparation: 3/16/2010
Preparer's Name Sean Gahan	Signature of Preparer (optional)

## Section II – Hazardous Ingredients/Identity Information

Hazardous Component (Specific Chemical Identity, Common Name(s))	CAS #	OSHA / PEL	ACGIH TLV	Other Limits Recommended	% (optional)
Ethylene Glycol	107-21-1	50 ppm	100 mg/m <sup>3</sup>		
Silicon Dioxide, Crystalline free	112945-52-9	N/A	10 mg/m <sup>3</sup>		

## Section III – Physical/Chemical Characteristics

Boiling Point: 212 °F	Specific Gravity (H <sub>2</sub> O = 1) 1.00 – 1.10
Vapor Pressure (mm Hg.) N/A	Melting Point % Volatile (Volume) 70-80%
Vapor Density (Air = 1) >1	Evaporation Rate (Butyl Acetate = 1) > 1
Solubility in Water Miscible with water; insoluble in most petroleum solvents	
Appearance and Odor Milky white or pigmented liquid; characteristic latex order	

## Section IV – Fire and Explosion Hazard Data

Flash Point (Method Used) None	Flammable Limitations N/A
Extinguishing Media CO <sub>2</sub> , dry chemical, foam	
Special Fire Fighting Procedures Use water spray to cool fire-exposed containers	

### Unusual Fire and Explosion Hazards

Pressure may build up in closed containers that are exposed to fire or extreme high temperatures.

## Section V – Reactivity Data

Stability	Unstable		Conditions to Avoid
	Stable	✓	None Known
Incompatibility (Materials to Avoid) None known			
Hazardous Decomposition or Byproducts			Under extreme heat product may form oxides of nitrogen and carbon
Hazardous Polymerization	May Occur		Conditions to Avoid
	Will Not Occur	✓	None Known

## Section VI – Health Hazard Data

Routes of Entry    Inhalation? NO    Skin? YES    Ingestion? YES    Eye Contact? YES

### Health Hazards (Acute and Chronic)

**EYE CONTACT:** May cause eye redness or irritation.    **INHALATION:** Inhalation of vapors may cause headache or dizziness.

**INGESTION:** May cause gastrointestinal irritation.    **SKIN:** May cause temporary redness or skin rash.

Carcinogenicity? NO    NTP? NO    IARC Monographs? NO    OSHA Regulated? NO

No long term adverse effect are known.

Signs and Symptoms of Exposure: None known

Medical Conditions: None known

### Emergency and First Aid Procedures:

**Eye contact:** Flush with clean water for at least 15 minutes; seek medical attention.

**Ingestion:** Give two glasses of water or milk to dilute. If irritation develops, seek medical attention.

**Skin contact:** Wash affected area with soap and water.

**Inhalation:** If vapors are inhaled, move individual to fresh air. If respiratory irritation develops, seek medical attention.

## Section VII – Precautions for Safe Handling and Use

### Steps to be taken in Case Material is Released or Spilled

Dike spill. Absorb with inert material and collect for disposal. Do not allow material or washings to enter waterways.

### Waste Disposal Method

Dispose of material in accordance with all applicable Federal, State, and Local regulations

### Precautions to be taken in Handling and Storing

Read and Observe all precautions on the product label. **KEEP OUT OF REACH OF CHILDREN.**

### Other Precautions

Keep product from freezing.

## Section VIII – Control Measures

### Respiratory Protection (Specify Type)

Wear a NIOSH approved organic vapor respirator.

Ventilation	Local Exhaust Provide adequate ventilation.	Special
	Mechanical (general)	Other
Protective Gloves	Chemical resistant gloves are recommended.	Eye Protection Goggles or safety glasses

### Other Protective Clothing or Equipment

Wear long pants and shirt while applying product to protect skin from direct contact.

**Work/Hygenic Practices:** Wash hands thoroughly before eating, drinking, smoking or using the restroom.

The information contained herein is, to the best of Perma-Chink Systems, Inc. knowledge, accurate as of the data indicated. Since the information contained herein may be applied under conditions beyond our control and with which we may be unfamiliar, and since data made available subsequent to the date hereof may suggest modifications of the information, we do not assume responsibility for the results of its use. This information is furnished on the condition that the person receiving it shall make his own determination as to the suitability of the material for his particular purpose and on the condition that he assumes the risk of his use thereof.