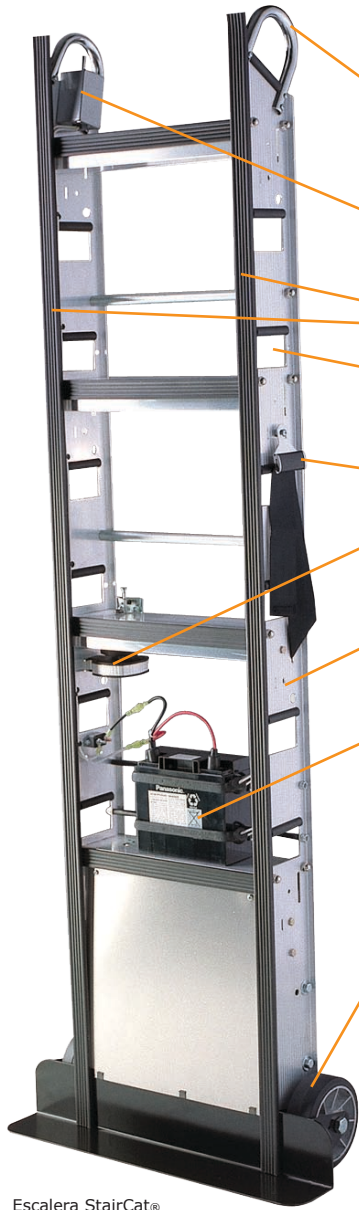


# SM SalesMaker Carts

418 Roberts Ave Louisville, KY 40214 - 800-821-4140 - www.salesmakercarts.com



Escalera StairCat®  
Model: MS-1-72

## Making Light Work Of Heavy Loads

Modular design allows any part to be replaced by the operator in the field.

Ergonomic, plated handles, angled for easier load handling. Magnum Handle upgrades available.

Single control, **easy to operate "UP-DOWN" switch.**

Sculptured, long-lasting, non-marking vinyl padding.

Ergonomic placement of **multiple hand holds** give you a place to hold where you need it.

Fastest, easiest to use, automatic rewinding safety strap available. **Upper and lower straps optional.**

Frame made of tough tempered aluminum alloy. **Stronger than magnesium - lighter than steel!**

Non-spillable, sealed, rechargeable battery. Optional high-capacity battery available. Charger included.

**Non marking wheels and lifting feet** protect all step and floor surfaces.



**POWERED STAIR CLIMBER**  
New high-efficiency motor capable of **the most lifts per charge of any powered stair climbing hand truck.** Serviceable drive train, built for decades of service.



### SPECIFICATIONS

	MS-60	MS-66	MS-72	MS-1-66	MS-1-72
<b>Capacity</b>	700 lb	700 lb	700 lb	1200 lb	1200 lb
<b>Overall Height</b>	58"	64"	71.5"	64"	71.5"
<b>Width</b>	24"	24"	24"	24"	24"
<b>Depth (Std. Toeplate)</b>	10.5"	10.5"	10.5"	10.5"	10.5"
<b>Max. # of Straps</b>	3	3	4	3	4
<b>Weight</b>	75 lb	77 lb	80 lb	81 lb	83 lb



# SM SalesMaker Carts

418 Roberts Ave Louisville, KY 40214 - 800-821-4140 - www.salesmakercarts.com



Escalera StairCat®  
Model: MLA-HC

## Making Light Work of Heavy Loads

- Ergonomic, plated handles, angled for easier load handling. Magnum Handle upgrades available.
- Single control, **easy to operate "UP-DOWN" switch.**
- Steel lift frame - 1200 lb capacity - 54 inch lift height - 28.25 inch forks
- Ergonomic placement of **multiple hand holds** give you a place to hold where you need it.
- Fastest, easiest to use, automatic rewinding safety strap available. **Upper and lower straps optional.**
- Frame made of tough tempered aluminum alloy. **Stronger than magnesium - lighter than steel!**
- Non-spillable, sealed, rechargeable battery. Optional high-capacity battery available. Charger included.
- Extraordinary gear box operated with maximum efficiency. Durable, serviceable, and built for years of service.
- Non-marking** lifting feet and 6 inch wheels with sealed ball bearings protect all step and floor surfaces for years of trouble-free use.
- Swivel casters provide maximum maneuverability in tight quarters.

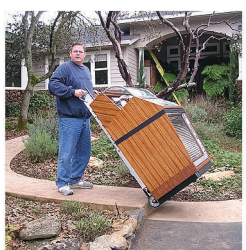
RLA Lifts feature a removable lift attachment for maximum versatility. Use your handtruck as a stair climbing lift, or a stair climbing dolly!



Model: RLA-HC with lift attachment removed



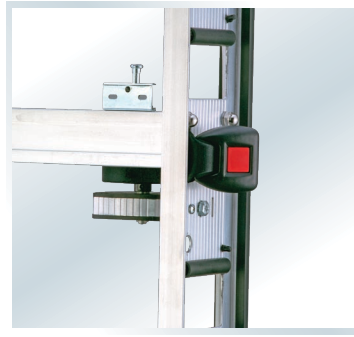
SPECIFICATIONS							
Model	Description	Winch	Capacity	Height	Width	Depth	Weight
MLA-HC	Stair Climbing Forklift	Manual	1200 lb	68"	24.5"	38.25"	168 lb
MLA-EW	Stair Climbing Forklift	Electric	1200 lb	68"	24.5"	38.25"	184 lb
RLA-HC	Stair Climbing Forklift w/ Removable Lift Attachment	Manual	1200 lb	68"	24"	38.25"	181 lb
RLA-EW	Stair Climbing Forklift w/ Removable Lift Attachment	Electric	1200 lb	68"	24"	38.25"	198 lb
QLA-HC	Stair Gliding Forklift	Manual	1200 lb	68"	24.5"	38.25"	128 lb
QLA-EW	Stair Gliding Forklift	Electric	1200 lb	68"	24.5"	38.25"	158 lb





**Big Wheel Attachment**

BWA-1: Removable pneumatic 10" tires for rolling on rough terrain. Easily snaps on/off hand truck in 2 seconds.



**Auto-Rewind Safety Strap**

RW-1: 12 ft. long nylon automatic rewinding safety strap. Upper, middle and lower positions available for maximum versatility.



**Big Toeplate Attachment**

BTA-12-28 / BTA-12-32: Large removable toeplate fits over standard toeplate. Available in 2 sizes; 12" x 28" and 12" x 32"



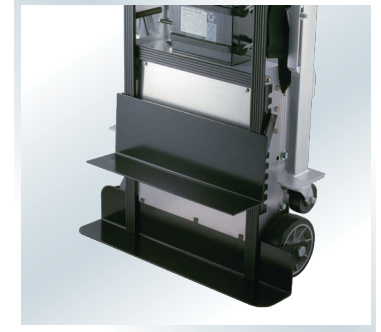
**Retractable Load Support**

RLS-1: Wide track folding carriage legs with swivel casters. Foot-operated latch allows for easy deployment without uprighting load.



**Barrel Attachment**

BAR-1 / BAR-2: Concave, padded brace stabilizes cylinder-shaped loads. Used for water-heaters, barrels and drums.



**Height Adjustable Toeplate**

HAT-1: For moving loads with legs, such as furniture and snack vending machines.



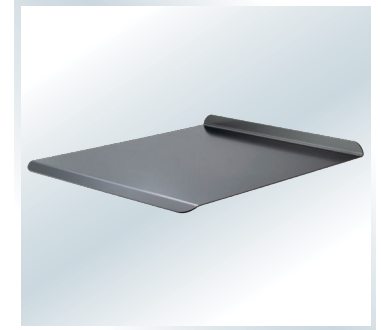
**Swivel Caster Attachment**

SCA-1: Attaches easily to the back of the hand truck near the top handles. Allows the hand truck to lay flat and roll in a horizontal position.



**Magnum Handle Upgrade**

#1305 / #1307: No-slip coated handle with wider opening. Replaces standard chrome top handle. Cross-bar option available (#1307).



**Lift Plate Attachment**

LPA-1: Removable 24" x 28" steel platform locks on to forks (for fork lift models only).



**Portable Steps**

Custom designed aluminum steps available in various sizes to fit most delivery vehicles ranging from small pick-ups to large delivery trucks.



**Lift Hitch Attachment**

LH-3: Carries Escalera Forklifts on the back of delivery vehicles. Fits standard 2" receiver (for fork lift models only).



**Escalera CopyCaddy™**

RPA-1 / RPA-2: Delivery cart/ramp for copy machines and large electronic equipment. 2 pallet sizes and 10" extensions available. Includes all-terrain tires, and adjustable strap.