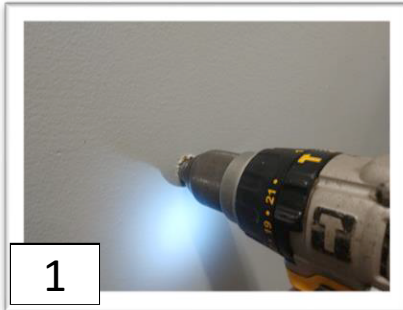


NAT HD-9RO UNDER SINK STANDARD INSTALL

Wood (Screw) and Drywall (Toggle) Installation Procedures

NOTE: TURN OFF WATER SUPPLY



Drill an 1/8" Pilot Hole for Wood Installation.
Drill 7/8" Hole for Drywall Installation.

TOOLS REQUIRED

- Power Drill
- 1/8" Drill Bit
- 7/8" Drill Bit or 7/8" Step Drill
- Phillips Screwdriver

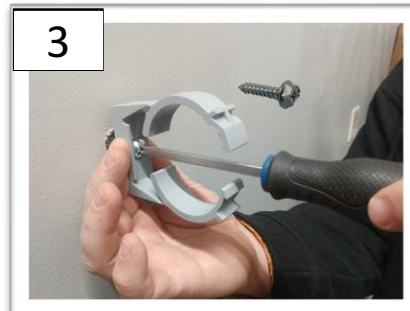


UNBOX HD-9RO KIT

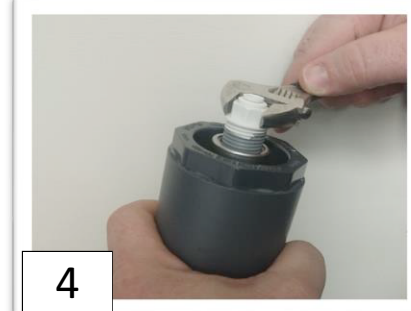
- HD-9 UNIT
- (2) 1/4" Tube Fittings
- 1/4" Tube
- Wall Anchor
- 1/4" Wood Screw



Insert Wood Screw through Clamp and Tighten. *Insert Toggle into Hole for Drywall Installation.*



Use 1/4" Wood Screw for Wood Installation.
Pull on Toggle and Tighten Fastener until tight against the Drywall.



Thread 1/4" Tube Fittings into each side of the HD Unit and use Wrench to tighten.



Route the Water Line from Reservoir to Bottom of the Unit.
Insert and Push 1/4" Tube into the Bottom Fitting.

TURN ON WATER