

GEN\_VMT

EN



# Penray 01 Tiles

Installation Manual



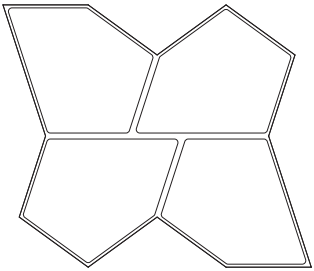
reddot winner 2020

V/COUSTIC

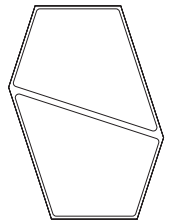
# I Material Needed

## Included

PENRAY 01\_tiles | 1.56m<sup>2</sup>

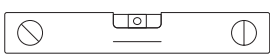


tiles 01.1 | 6 uni.



tiles 01.2 | 6 uni.

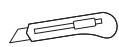
## Not included



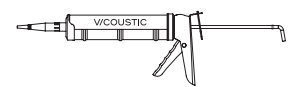
Level



Measuring Tape



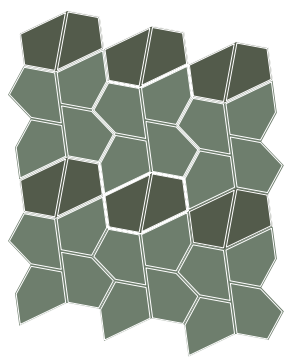
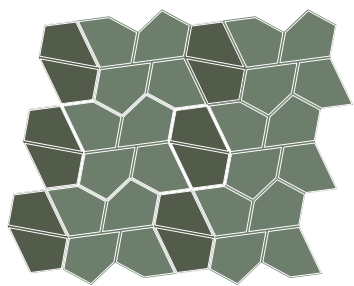
Box Cutter



Flexi Glue Ultra

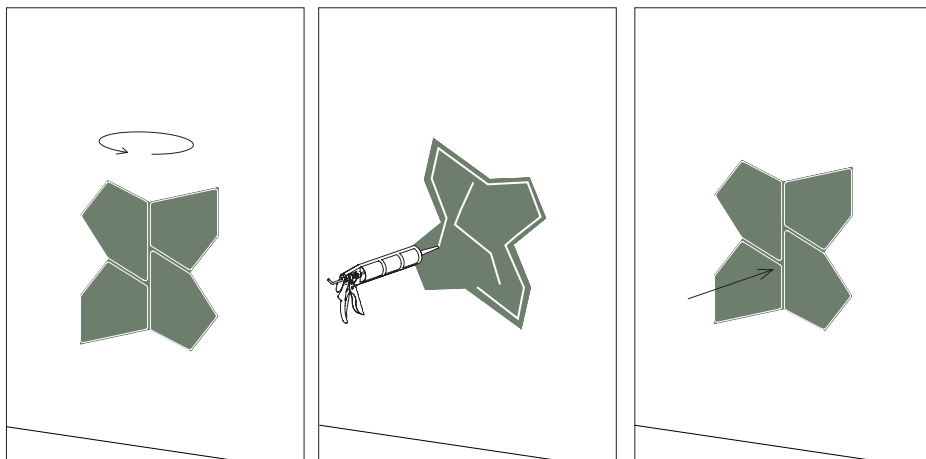
## Possible setup examples

One box (12 tiles)



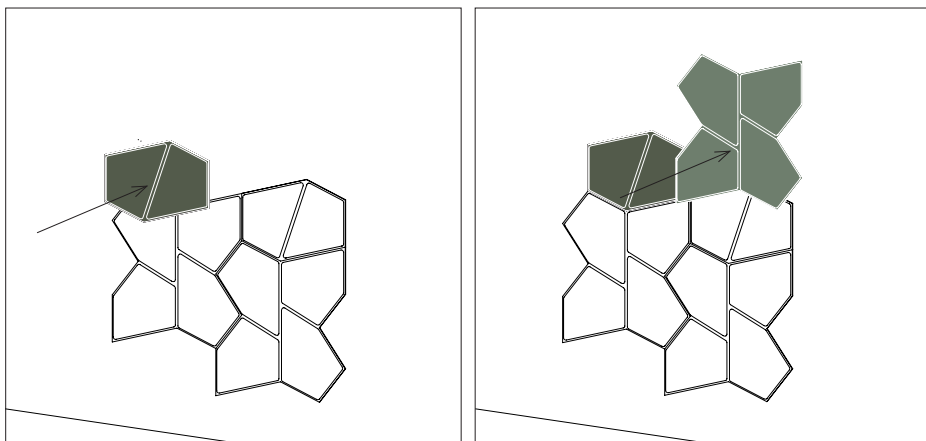
1\_

Apply Flexi Glue Ultra on the back of the acoustic panel, near the edges and in the center. Do not wait longer than 5 minutes after applying the glue to attach the panel to the wall.



2\_

Place the panel on the suitably chosen position on the wall. Once in the desired place, press firmly against the wall for 15 seconds.



For the installation of Gen Tiles on the ceiling, we recommend using Flexi Glue Ultra.

To ensure that you maximise the strength of the glue, don't make any adjustments to the panel after bonding.



Do not apply Gen Tiles behind radiators or too close to a heat source.

## V/COUSTIC

### Main Office, R&D & Logistics

Avenida do Pólo 3, N.º 159, Carvalhosa  
4590-137 Paços de Ferreira, Portugal

### Office

Rua Quinta do Bom Retiro N.º 16, Armazém 9  
2820-690 Charneca da Caparica, Portugal  
T (+351) 212 964 100

### Info and Sales

E [sales@vicoustic.com](mailto:sales@vicoustic.com)

[www.vicoustic.com](http://www.vicoustic.com)

© Vicoustic, 2021 | V3

No parts of this document might be copied and/or published without written consent of Vicoustic.

