



Innovating the Art of Listening

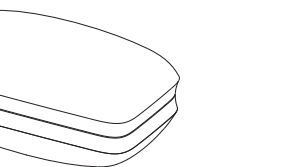


FCC ID: 2ATP3-TWS800  
TWS 800

Owner's Guide

Accessories

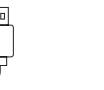
Charging Case



Eartips (8 pairs)



True Wireless Earbuds

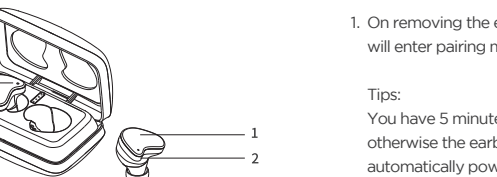


Charging Cable



Owner's Guide

Overview



1	Music & Call Button
2	Microphone
3	Indicator Light

Power on / off

The earbuds will automatically power on when removed from the charging case.

The earbuds will automatically power off and begin recharging when you return them to the charging case.

**Attention:** When you first use the product, please allow the case and earbuds to charge for 1.5 hours before use.



To turn on the earphone without using charging box, press the button for 2 seconds. It's blue light will flash and you can hear "power on" when you wear it. To turn off the earphone without the charging box, press the button for 4 seconds. The light will turn red for 1 second, after which you will hear "power off".

Bluetooth Pairing

1. On removing the earbuds from the charging case the earbuds will enter pairing mode and the LED will flash red and blue.

Tips:  
You have 5 minutes to connect the earbuds to your device, otherwise the earbuds will exit the pairing mode and automatically power off. (You can re-enter pairing mode by replacing earbuds in the case and then extracting once more.)

2. Open the Bluetooth connection menu on your device, select: HIFIMAN TWS800. Once paired, you will hear "Connected." The red and blue LEDs will stop flashing.

Use Left Earbud Only

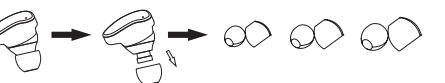
Leave the right earbud in the charging case. The left earbud will enter one-sided mode. The TWS800 will automatically return to stereo if and when the right earbud is removed from the charging case.

Use Right Earbud Only

Leave the left earbud in the charging case. The right earbud will automatically enter one-sided mode. To return to stereo, simply remove the left earbud from the charging case.

Wear

Try all the eartips to find the best fit. It is important to get a complete seal to achieve the best performance.



Insert the earbuds into your ear canal and twist toward the back of your neck in order to achieve the best fit and performance.



Tips:  
When first using the TWS800, take some time to try on the various eartips to see which offer the best fit and performance.

Music & Calls

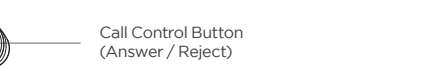
Music



- ※ Press once to pause, press again to resume play.
- ※ Double-press the left earbud to reduce volume, double-press the right earbud to increase volume.
- ※ Triple-press the left earbud to turn to the next track, triple-press the right earbud to turn to previous track.

Calls

Calls are initiated and answered with either the left or right earbud.



- ※ Press once to accept an incoming call, or press and hold 2 seconds to reject.
- ※ Press once to end the call.
- ※ When you are talking on the phone and receive another call: Press once to end the first call and answer new coming call, press and hold for 2 seconds to switch calls between the old/new call.

\* Press and hold two seconds to activate the phone's voice control.

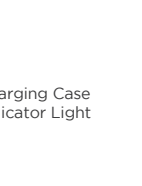
Charging

Charge the Earbuds

Place the earbuds in the charging case and close the lid. The red light will turn on when charging, and a blue light will appear when finished.

Charge the Charging Case

Insert a Type-C USB cable into the socket to charge the battery case and earbuds. One-to-four LED lights will appear, indicating the case and earbuds. Up to four will be visible: One light indicates minimal power remains, and four buds indicate charging is complete.



User Guide

Charge Level

When the battery power is low or entirely drained, the words "Battery Low" will be heard every 20 seconds.

Charging Case Status Light

Charging	One-to-four lights are visible while charging
Full charged	Steady light

Note:  
Please do not remove or replace the internal battery, doing so will void your warranty automatically.

Reset the Earphones

When the earphones are turn off, press the button for 10 seconds, during this period, the red/blue lights will flash for two times. After that the earphones reset successfully.

User Guide

Basic Specification of Earbud

Earbud size	25.6*20.2*27.6mm
Single head weight	6.9g
Earbud charging time	1H
Work voltage	5V
Standby time of Earbud	120H
Music time	4.5H
Call time	3.5H
Bluetooth version	Bluetooth 5.0

Transmission range (Hz)	2.40GHz-2.48GHz
Transmission distance	>10m, up to 35m (depending on the environment)
Audio coding format	HFP 1.7, HSP 1.2, A2DP 1.3, AVRCP 1.6, SPP 1.2 and PBAP 1.0

Specification of Charging Case

Size	76.7*48.3*38.6mm
Weight	57.7g
Charging port	Type-C USB
Base charging (full) provide power to earbud	6 times
Charging time	2 H

User Guide

Safety Information

- Avoid listening at high volumes. Failure to do so may lead to hearing loss.
- Do not use the TWS800 when driving a car, cycling, near traffic, or in any environment that requires full attention.
- To maximize battery life, disconnect the USB cable after charging.
- Please note that If using TWS800 to watch videos or for gaming, the audio will be slightly delayed. This is unavoidable due to the latency of Bluetooth transmissions.

NOTE: This equipment has been tested and found to comply with the limits for a Class B digital, pursuant to Part 15 of the FCC Rules. These limits are designed to provide reasonable protection against harmful interference in a residential installation. This equipment generates, uses and can radiate radio frequency energy and, if not installed and used in accordance with the instructions, may cause harmful interference to radio communications. However, there is no guarantee that interference will not occur in a particular installation. If the equipment does cause harmful interference to radio or television reception, which can be determined by turning the equipment off and on, the user is encouraged to try to correct the interference by one or more of the following measures:  
--- Reorient or relocate the receiving antenna.  
--- Increase the separation between the equipment and receiver.  
--- Connect the equipment into an outlet on a circuit different from that to which the receiver is connected.  
--- Consult the dealer or an experienced radio/ TV technician for help.

NOTE: This equipment has been tested and found to comply with the limits for a Class B digital, pursuant to Part 15 of the FCC Rules. These limits are designed to provide reasonable protection against harmful interference in a residential installation. This equipment generates, uses and can radiate radio frequency energy and, if not installed and used in accordance with the instructions, may cause harmful interference to radio communications. However, there is no guarantee that interference will not occur in a particular installation. If the equipment does cause harmful interference to radio or television reception, which can be determined by turning the equipment off and on, the user is encouraged to try to correct the interference by one or more of the following measures:  
--- Reorient or relocate the receiving antenna.  
--- Increase the separation between the equipment and receiver.  
--- Connect the equipment into an outlet on a circuit different from that to which the receiver is connected.  
--- Consult the dealer or an experienced radio/ TV technician for help.

NOTE: This equipment has been tested and found to comply with the limits for a Class B digital, pursuant to Part 15 of the FCC Rules. These limits are designed to provide reasonable protection against harmful interference in a residential installation. This equipment generates, uses and can radiate radio frequency energy and, if not installed and used in accordance with the instructions, may cause harmful interference to radio communications. However, there is no guarantee that interference will not occur in a particular installation. If the equipment does cause harmful interference to radio or television reception, which can be determined by turning the equipment off and on, the user is encouraged to try to correct the interference by one or more of the following measures:  
--- Reorient or relocate the receiving antenna.  
--- Increase the separation between the equipment and receiver.  
--- Connect the equipment into an outlet on a circuit different from that to which the receiver is connected.  
--- Consult the dealer or an experienced radio/ TV technician for help.

NOTE: This equipment has been tested and found to comply with the limits for a Class B digital, pursuant to Part 15 of the FCC Rules. These limits are designed to provide reasonable protection against harmful interference in a residential installation. This equipment generates, uses and can radiate radio frequency energy and, if not installed and used in accordance with the instructions, may cause harmful interference to radio communications. However, there is no guarantee that interference will not occur in a particular installation. If the equipment does cause harmful interference to radio or television reception, which can be determined by turning the equipment off and on, the user is encouraged to try to correct the interference by one or more of the following measures:  
--- Reorient or relocate the receiving antenna.  
--- Increase the separation between the equipment and receiver.  
--- Connect the equipment into an outlet on a circuit different from that to which the receiver is connected.  
--- Consult the dealer or an experienced radio/ TV technician for help.

NOTE: This equipment has been tested and found to comply with the limits for a Class B digital, pursuant to Part 15 of the FCC Rules. These limits are designed to provide reasonable protection against harmful interference in a residential installation. This equipment generates, uses and can radiate radio frequency energy and, if not installed and used in accordance with the instructions, may cause harmful interference to radio communications. However, there is no guarantee that interference will not occur in a particular installation. If the equipment does cause harmful interference to radio or television reception, which can be determined by turning the equipment off and on, the user is encouraged to try to correct the interference by one or more of the following measures:  
--- Reorient or relocate the receiving antenna.  
--- Increase the separation between the equipment and receiver.  
--- Connect the equipment into an outlet on a circuit different from that to which the receiver is connected.  
--- Consult the dealer or an experienced radio/ TV technician for help.

NOTE: This equipment has been tested and found to comply with the limits for a Class B digital, pursuant to Part 15 of the FCC Rules. These limits are designed to provide reasonable protection against harmful interference in a residential installation. This equipment generates, uses and can radiate radio frequency energy and, if not installed and used in accordance with the instructions, may cause harmful interference to radio communications. However, there is no guarantee that interference will not occur in a particular installation. If the equipment does cause harmful interference to radio or television reception, which can be determined by turning the equipment off and on, the user is encouraged to try to correct the interference by one or more of the following measures:  
--- Reorient or relocate the receiving antenna.  
--- Increase the separation between the equipment and receiver.  
--- Connect the equipment into an outlet on a circuit different from that to which the receiver is connected.  
--- Consult the dealer or an experienced radio/ TV technician for help.

User Guide

HIFIMAN Limited Warranty

HIFIMAN warrants this product to be free of defects in material or workmanship for a period of one year from the date of original retail purchase. If your product is found to be defective during the warranty period, HIFIMAN will, at its sole option, either repair the product or replace the product with a new or factory reconditioned or substantially equivalent model. This limited warranty does not apply to any defects attributable to damage beyond the reasonable control of HIFIMAN including damage caused by abuse, misuse, misapplication or modifications performed by anyone other than HIFIMAN.

If your product is under warranty and problem appears, please contact HIFIMAN customer service or your authorized dealer. If necessary, and at our discretion, we will provide a warranty repair or replacement of your product.

Caution: do not disassemble or modify the product in any way. Tampering with or modifying your HIFIMAN product will void its warranty.

This Limited Warranty does not apply to:

1. Defective or discolored parts if the damages are caused by fluids, dirt, missing keys, broken plastic parts or improper use.
2. Damage caused by misuse with another product.
3. Use of the product for other than its normal intended use, including, with out limitation, failure to use the product in accordance with the supplied "Owner's Guide"

For any further information or questions, please contact your authorized HIFIMAN dealer, or email us directly at customerservice@HIFIMAN.com.

User Guide

HIFIMAN Limited Warranty

HIFIMAN warrants this product to be free of defects in material or workmanship for a period of one year from the date of original retail purchase. If your product is found to be defective during the warranty period, HIFIMAN will, at its sole option, either repair the product or replace the product with a new or factory reconditioned or substantially equivalent model. This limited warranty does not apply to any defects attributable to damage beyond the reasonable control of HIFIMAN including damage caused by abuse, misuse, misapplication or modifications performed by anyone other than HIFIMAN.

If your product is under warranty and problem appears, please contact HIFIMAN customer service or your authorized dealer. If necessary, and at our discretion, we will provide a warranty repair or replacement of your product.

Caution: do not disassemble or modify the product in any way. Tampering with or modifying your HIFIMAN product will void its warranty.

This Limited Warranty does not apply to:

1. Defective or discolored parts if the damages are caused by fluids, dirt, missing keys, broken plastic parts or improper use.
2. Damage caused by misuse with another product.
3. Use of the product for other than its normal intended use, including, with out limitation, failure to use the product in accordance with the supplied "Owner's Guide"

For any further information or questions, please contact your authorized HIFIMAN dealer, or email us directly at customerservice@HIFIMAN.com.

User Guide

HIFIMAN Limited Warranty

HIFIMAN warrants this product to be free of defects in material or workmanship for a period of one year from the date of original retail purchase. If your product is found to be defective during the warranty period, HIFIMAN will, at its sole option, either repair the product or replace the product with a new or factory reconditioned or substantially equivalent model. This limited warranty does not apply to any defects attributable to damage beyond the reasonable control of HIFIMAN including damage caused by abuse, misuse, misapplication or modifications performed by anyone other than HIFIMAN.

If your product is under warranty and problem appears, please contact HIFIMAN customer service or your authorized dealer. If necessary, and at our discretion, we will provide a warranty repair or replacement of your product.

Caution: do not disassemble or modify the product in any way. Tampering with or modifying your HIFIMAN product will void its warranty.

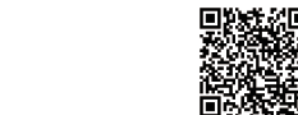
This Limited Warranty does not apply to:

1. Defective or discolored parts if the damages are caused by fluids, dirt, missing keys, broken plastic parts or improper use.
2. Damage caused by misuse with another product.
3. Use of the product for other than its normal intended use, including, with out limitation, failure to use the product in accordance with the supplied "Owner's Guide"

For any further information or questions, please contact your authorized HIFIMAN dealer, or email us directly at customerservice@HIFIMAN.com.



Innovating the Art of Listening



FACEBOOK  
Scan QR Code to join HIFIMAN on facebook

facebook.com/hifimanelectronics

twitter.com/hifimanofficial

www.hifiman.com