

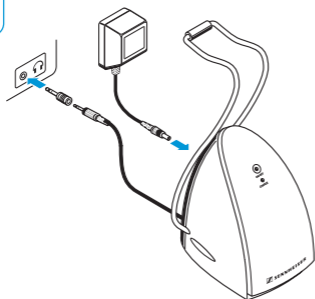
RS 120 II RS 119 II



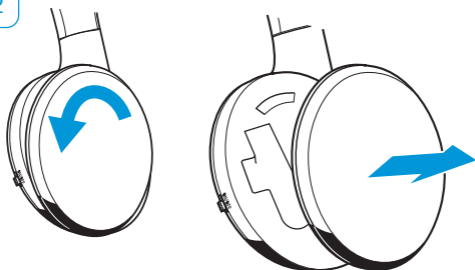
Quick Guide
Consignes de sécurité
Indicaciones de seguridad
Guia de Segurança
Sicherheitshinweise
Guida per la sicurezza
Veiligheidsgids

 **SENNHEISER**

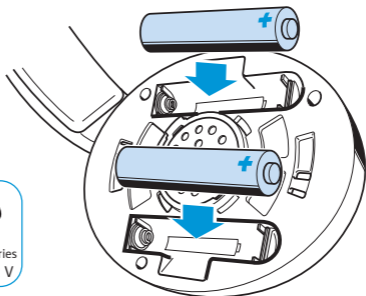
1



2

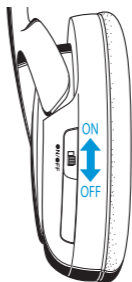


3

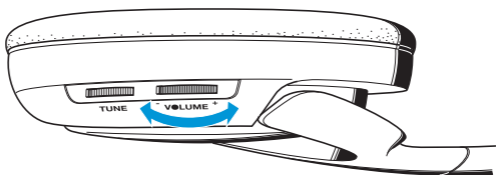


rechargeable batteries
NiMH AAA 1.2 V

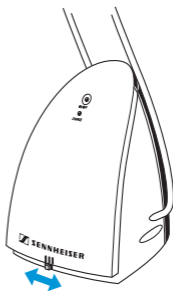
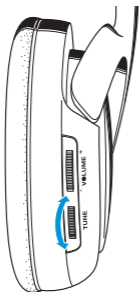
4



5



6



Delivery includes



HDR 120 II/HDR 119 II headphones



TR 120 II/TR 119 II transmitter with audio connection cable



SA103K-09G/NT9-3A (EU) mains unit (for EU market only)

SA103K-09B/NT9-3A (UK) mains unit (for UK market only)



NiMH rechargeable batteries, AAA size, 1.2 V



Adapter, 1/4" (6.3 mm)



Quick Guide



Safety Guide



The diagrams corresponding to the chapter headings can be found on the fold-out page.

Preparing the transmitter for use


The transmitter is prepared for wall mounting (recess at the rear of the transmitter). The required mounting material (screws and plugs) is not included in the delivery.



Connecting the transmitter to an audio output of your audio source

- ▶ Choose a suitable place near your audio source (e.g. TV, stereo or home cinema system). Avoid placing the transmitter close to metal objects such as shelf bars, reinforced

concrete walls, etc. as this can decrease the transmitter's range.

- ▶ Connect the transmitter's audio connection cable:
 - either directly to the headphone socket or
 - to the 1/4" (6.3 mm) adapter and a corresponding headphone socket.
- ▶ Set the volume for the headphone output of your audio source to a medium level. If the headphone output volume is set too low, the transmitter automatically switches off.
-  Some TVs have a function that mutes the TV loudspeakers when you connect a transmitter. If necessary, change this setting via the operating menu of your TV.

Connecting the transmitter to the mains

- ▶ Connect the mains unit to the socket at the rear of the transmitter. Plug the mains unit into a wall socket. The transmitter switches on and the **ON/OFF** LED lights up green.

Preparing the headphones for use

2 Opening the battery compartments

- ▶ Turn the ear pads in the direction of the arrow until you overcome a slight resistance and lift them off the ear cups.

3 Inserting and replacing the rechargeable batteries



CAUTION

- ▶ Only use NiMH rechargeable batteries, never use standard batteries!
- ▶ Insert the supplied rechargeable batteries. Secure the ear pads to the ear cups.
- ▶ Charge the rechargeable batteries for at least 24 hours prior to first time use. Subsequent charging time depends on the previous operating time and is up to 18 hours max.

- ▶ Place the headphones on the charging cradle of the transmitter. The red LED lights up, indicating that the batteries are being charged. The LED remains lit even when the rechargeable batteries are fully charged.

Using the RS headphone system

4 Switching on the audio source

- ▶ Switch on the audio source. The transmitter automatically switches on and off together with the audio source. The **ON/OFF** LED lights up green.

5 Switching on the headphones/adjusting the volume

- ▶ First, set the volume on the headphones to a low level.
- ▶ Switch on the headphones and set the volume to the desired level.
- ▶ Switch off the headphones after use to avoid discharging the batteries.

6 Optimizing the reception

- ▶ Adjust the receiver channel with the **TUNE** control on the headphones.

However, if reception is subject to interference:

- ▶ Change the transmission channel by setting the switch at the bottom of the transmitter to another position and re-adjust the receiver channel with the **TUNE** control on the headphones. Some electronic devices (e.g. televisions) can cause interference to your wireless headphone system. If this happens, increase the distance between the transmitter and the interference source.

Specifications and Frequently Asked Questions (FAQ's)

- ▶ Visit our website at www.sennheiser.com.



Manufacturer declarations

Warranty

Sennheiser electronic GmbH & Co. KG gives a warranty of 24 months on this product. For the current warranty conditions, please visit our website at www.sennheiser.com or contact your Sennheiser partner. Before putting the product into operation, please observe the respective country specific regulations.

In compliance with the essential requirements and other relevant provisions of the following Directives:

- RoHS Directive (2002/95/EC)
- WEEE Directive (2002/96/EC)
Please dispose of this product by taking it to your local collection point or recycling center for such equipment.
- Battery Directive (2006/66/EC)
Please dispose of the rechargeable batteries as special waste or return them to your specialist dealer. In order to protect the environment, only dispose of exhausted batteries.



CE Declaration of Conformity

- R&TTE Directive (1999/5/EC)
- EMC Directive (2004/108/EC)
- Low Voltage Directive (2006/95/EC)
- EuP Directive (2005/32/EC)

The CE Declaration of Conformity is available on our website at www.sennheiser.com.

In compliance with:

Europe/UK

CE 0682



Sennheiser electronic GmbH & Co. KG

Am Labor 1, 30900 Wedemark, Germany
www.sennheiser.com

Printed in China, Publ. 04/11, 545188/A01

