



OPERATING INSTRUCTIONS | AMP+DAC5

ELEMENT II

SUPPORT

ONLINE

CONTACT@JDSELABS.COM
[JDSELABS.COM/SUPPORT](https://www.jdslabs.com/support)

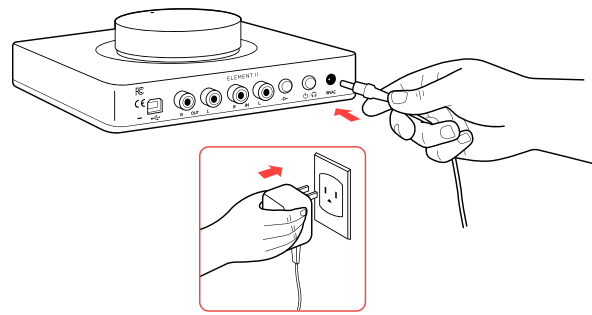
BY PHONE

314-252-0936
9:30AM-6PM CST,
MONDAY THROUGH FRIDAY

BY MAIL

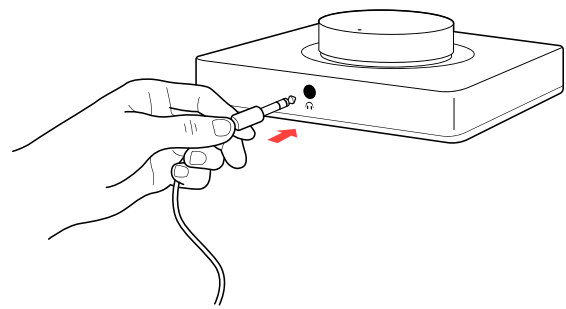
909 N BLUFF RD
COLLINSVILLE, IL 62234
UNITED STATES

QUICK SETUP



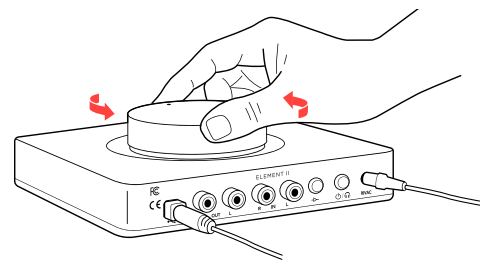
STEP 01

Connect AC power adapter to rear power jack (16VAC), then connect to wall outlet



STEP 03

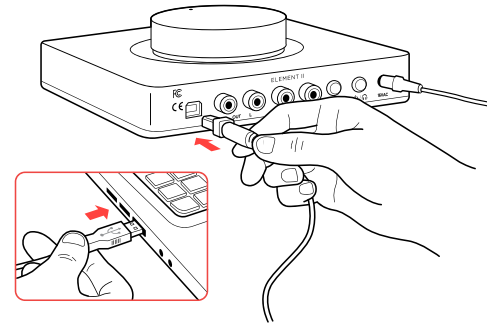
Connect headphones to the front headphone output jack



STEP 05

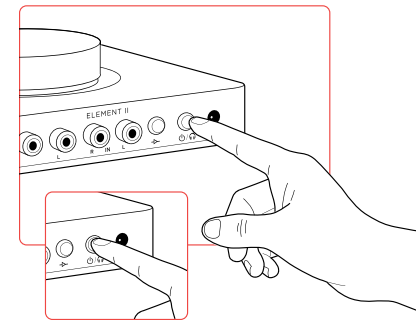
Slowly raise the volume knob to an appropriate listening level. See listening tips on page 5

CONFIGURATION



STEP 02

Connect USB cable between your computer and the USB jack



STEP 04

A short press of the Power/Mode button turns Element on, indicated by lighting beneath the volume knob.

A long press of the Power/Mode button will toggle between headphone or RCA Output.

Please see Connectivity and Computer Setup for additional help.

Connectivity

Element II accepts two methods of audio input: Digital input via USB, or Analog input via RCA jacks. Connecting an RCA cable mechanically bypasses the integrated DAC, so that the amplifier only plays audio from your external source.

Maximum RCA Analog Input Level (High Gain):	2.2 VRMS (+9 dBu)
Maximum RCA Analog Input Level (Low Gain):	9.9 VRMS (+22 dBu)

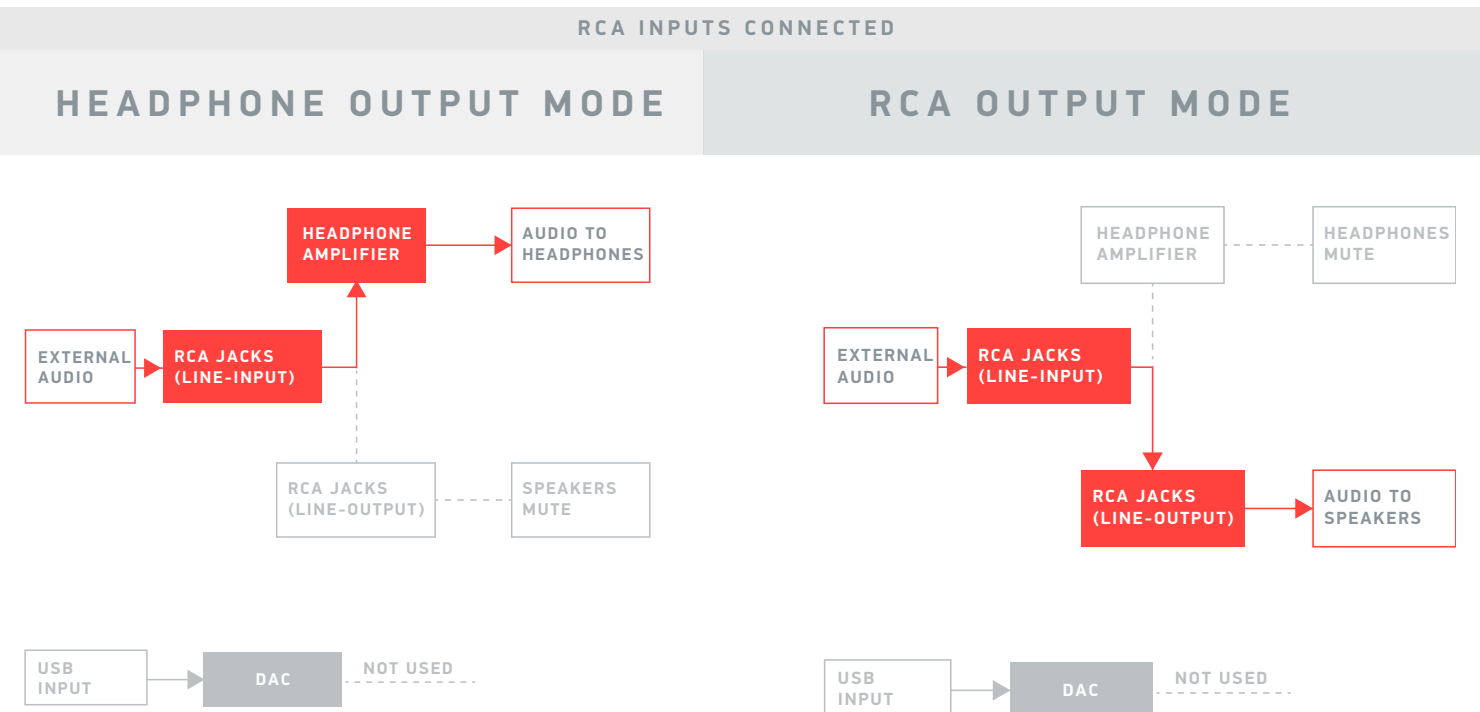
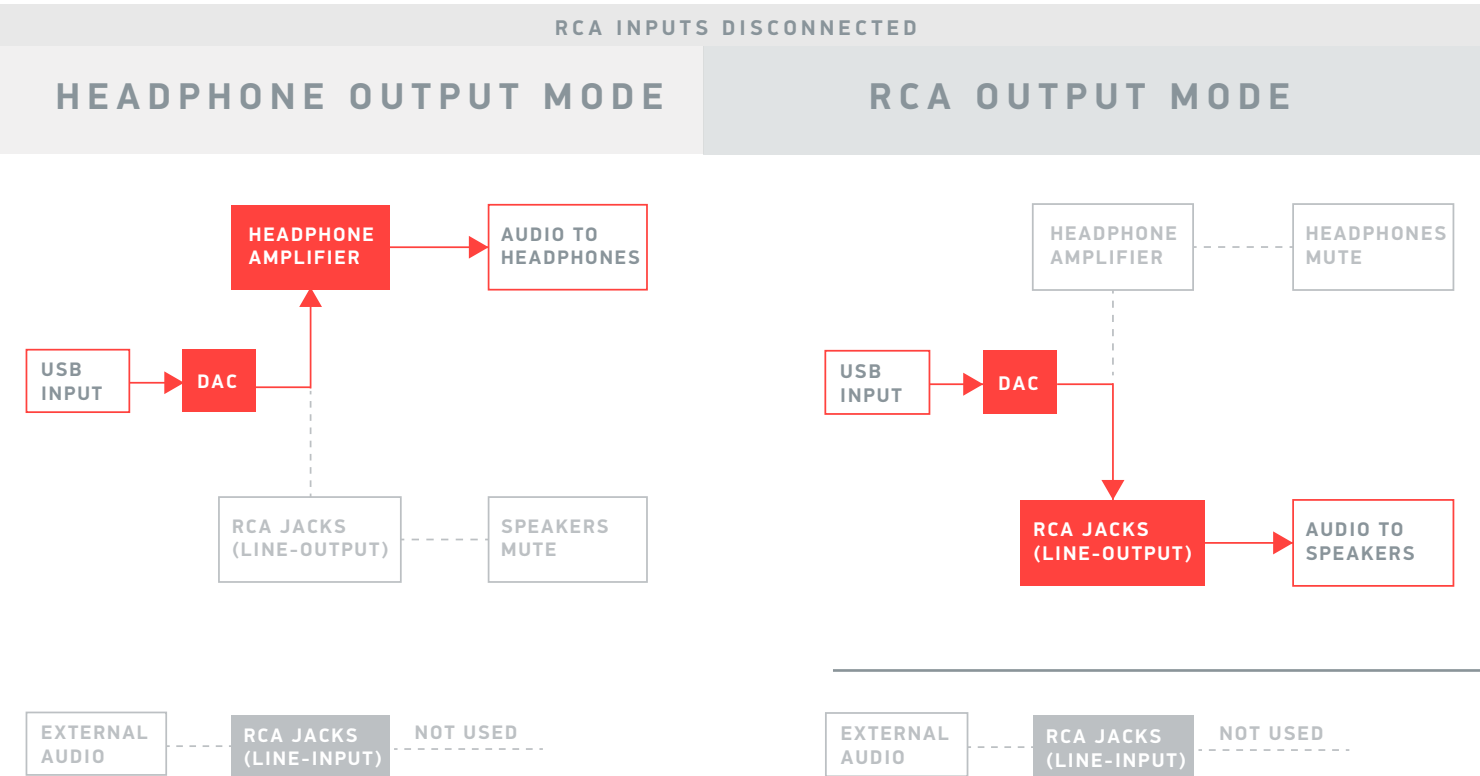
Setting Gain

Press the gain button to toggle between low or high gain amplification. Always use the lowest gain necessary.

Switch to high gain only when you're unable to achieve desired listening volume at low gain.

Element II Connectivity

Element II provides headphone output and RCA Preamp Outputs. Press the Power/Mode button for at least 1 second to toggle between these modes. Only one mode is active at a time. Volume is adjustable in either mode.



Listening Tips

For maximum signal fidelity, set the DAC to 24 or 32-bit audio and adjust digital volume slightly below 100% at your computer. Only control volume from the amplifier.

Set sampling rate to the highest integer multiple of your music collection. For example, use 176.4kHz for a collection of 44.1k or 88.2k or 176.4kHz files. Use 192kHz for a collection of 48k or 96k or 192k audio files.

Alternatively, you may install the optional XMOS drivers in Win10 for exclusive WASAPI mode.

Element II can amplify headphones to dangerously loud audio. Listen safely to conserve your hearing: www.hearingloss.org

To ensure an optimal noise floor, always position headphone amplifiers as far away as possible from wireless devices.

Operating Care

Element II uses a high current power supply and runs warm to the touch. Avoid covering the top and sides.

Element II can be safely powered on 24/7. For maximum relay lifespan, cycle power at least once per month.

Do not lift the amplifier by knob, or turn knob beyond its limits.

Use gentle force when inserting or removing cables.

SETUP

Computer Setup

Element II requires no drivers in Windows 10, Mac OS, Linux, and modern version of iOS and Android. You may download drivers for Win7/8 from jdslabs.com/drivers. These drivers may optionally be installed in Win10 for WASAPI support. Be sure to select your new DAC as the default playback device:

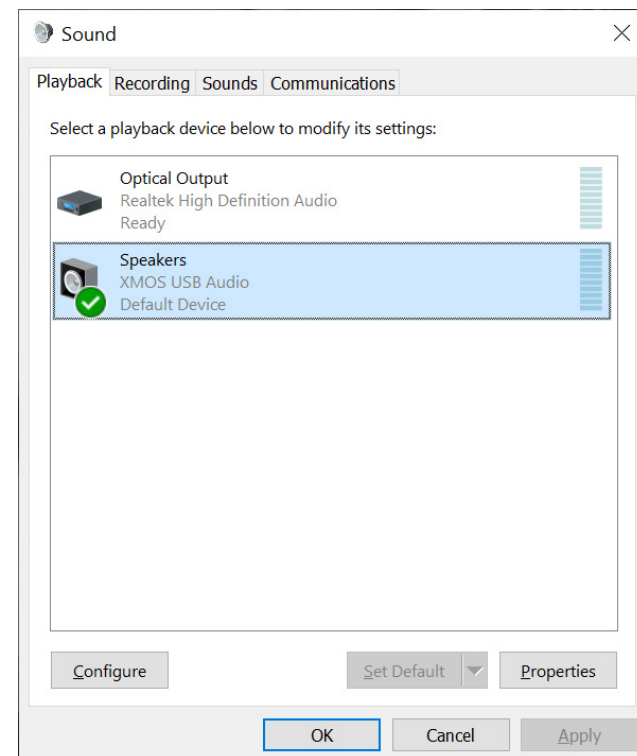
Windows 7/8/10

Right click the volume icon in your taskbar and choose Sound --> Playback. Click the XMOS or JDS Labs audio device, then choose “Set Default”. For best experience, also configure Properties:

- Enhancements: Check “Disable all enhancements”
- Advanced: See Listening Tips

Mac OS X

Ensure JDS Labs audio device is selected from Audio Devices.



Troubleshooting

No USB device or “Failed to Play Audio”

Cause: USB Device is not initialized.

Solution: Turn Element II off, then back on to reset the USB device.

Amplifier does not turn on

Cause: Missing or loose power adapter connection.

Solution: Firmly connect AC adapter to 16VAC power jack.

Internal LED flashes, then turns off

Cause: Wrong power adapter detected.

Solution: Please see Power Adapters section below.

No sound in one channel

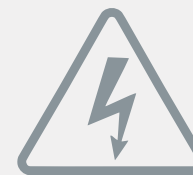
Cause: Bad cable, or incorrect computer settings.

Solution: Check balance settings; try another headphone or RCA cable. Some Mac OS X systems will pan audio to the Left channel upon initial connection of a DAC. User must restore balance to center.

No sound from headphones

Cause: Wrong mode, or incorrect connectivity, or incorrect setup

Solution: Please see Connectivity page to toggle between Headphone or RCA Output. Check cabling.



Power Adapters

ATTENTION: Incorrect power adapters can result in capacitor explosion hazards and device damage. Only use the power adapter included with your Element:

Type: AC-to-AC Transformer	Output Voltage: 16 VAC
Current: Minimum 1000mA	Connector: 2.1x55.mm (ID x OD)



Application for Council Directives 2004/108/EC, 2006/95/EC, 2002/95/EC. Conformity declared for EN55022:2011, EN611000-3-2, EN61000-3-3, EN55024-2



This equipment has been tested and found to comply with the limits for a Class B digital device, pursuant to part 15 of the FCC Rules.