



**Burson Funk**  
**Headphone Amplifier / Speaker Amplifier**  
**User Manual**

*Register for warranty Ref. page 6 for details*

## ***Thank You.***

All of us at Burson Audio would like to say thank you, and congratulations on purchasing the Burson Funk. We sincerely believe that your Burson Funk is an intelligent investment that will bring you many years of musical enjoyment and satisfaction.

We understand how eager you are to begin listening and we want you to become familiar with the full capabilities of the Burson Funk. However, before powering on the device, we encourage you to look through the manual.

## ***Team Burson***

The less the equipment tampers with the music, the greater the music becomes. This has been the core design philosophy of Burson Audio since 1996. If the equipment is honest and transparent then the proper tempo, dynamics and tone will materialize as a natural expression of the music and it becomes unnecessary to flavour the original sound. We believe that this ideal can never be achieved through standard circuitry building blocks such as opamps, IC regulators or even standard transformers. Instead, we work towards this ideal through the research and development of customized solid-state circuitries that are developed specifically to suit our applications. Only then will each and every component involved be pushed to their performance peak. And only then will the end result be consistent with our idealism.

***Team Burson***

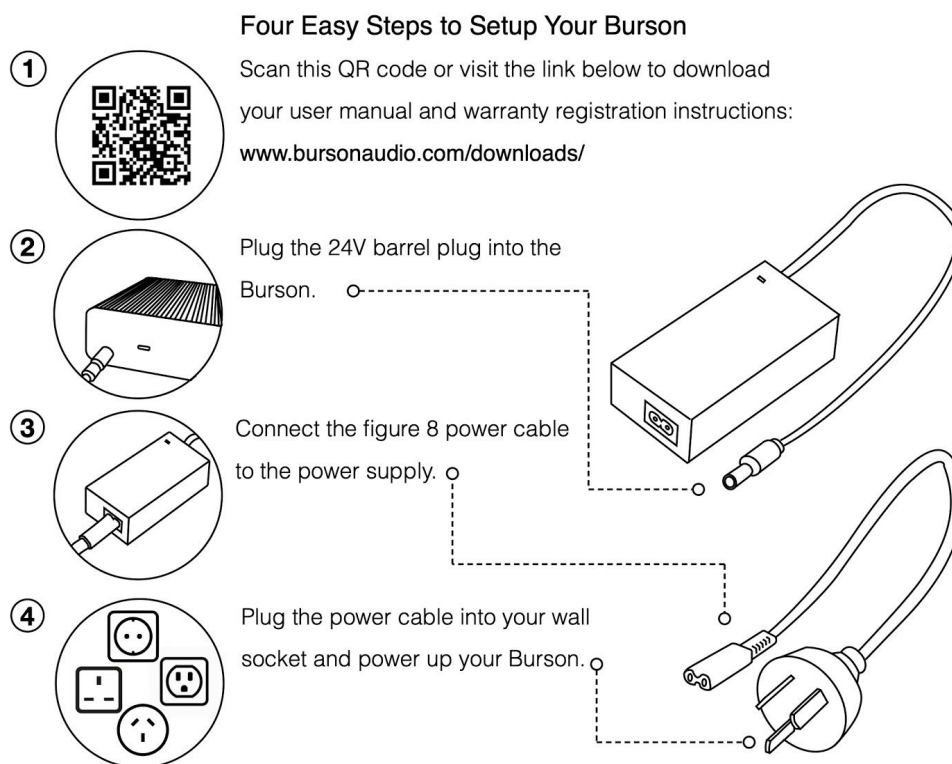
## Unpacking

After carefully unpacking your Burson Funk, inspect for any shipping damage and call your dealer immediately if any is found. Do not plug your Burson Funk into any outlet if you find shipping damage. Please save all packing materials so the unit can be easily and safely shipped if the need arises.

## The Accessories

- Funk Headphone Amp / Speaker Amp
- RCA Cables
- External Power Supply 24V 3A

## Basic Setup



## Stand Alone Setup

1. Make sure the unit is off.
2. Connect the 24V external power supply to the Funk (via the barrel socket)
3. Connect the line level source to the Funk RCA inputs.
4. Connect your headphones to the headphone socket
5. Connect your speaker to the Funk speaker outputs.
6. Power on the Funk.
7. Turn the volume control knob to adjust the volume.

## Connections



## ***Break-in, Warm-up and Caring.***

The sound of the Burson Funk improves steadily within minutes (not hours) after powered-up.

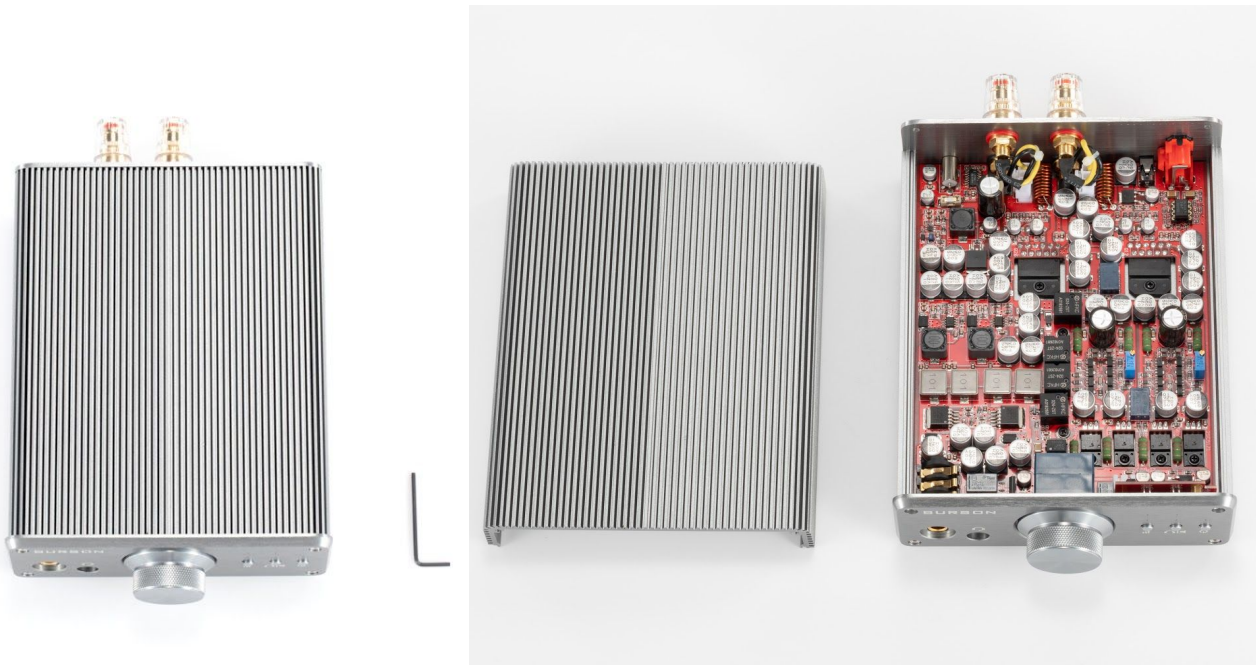
Never, connect or disconnect the headphone jack or the RCA cables from the Funk while music is playing. This could damage the Funk.

Never leave your amp on 24 / 7! There is a dangerous audiophile myth that having it on 24 / 7 makes it sound better. It's bad for the planet and will significantly quicken the drying of chemicals inside capacitors. Hence it will significantly shorten the useful life of your beloved equipment.

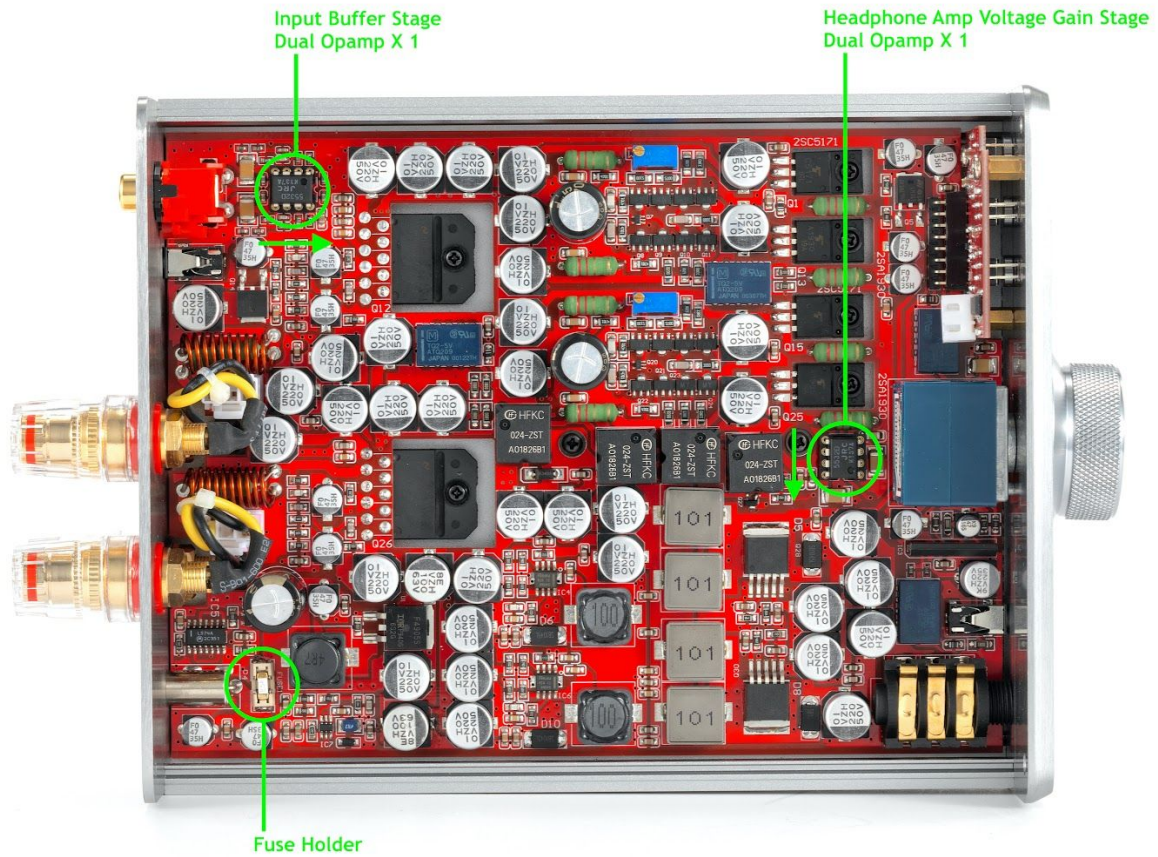
## ***Opamp Change & Upgrade***

The Burson Funk allows opamp changing to customise its sound to the owner's preference. When changing opamps, please be aware of the following:

1. The opamp power supply voltage in the Burson Funk is +/-15V
2. There are 2 dual opamps. One for the headphone amp stage and one for the Speaker amp stage.
3. Please refer to the following diagram for the position and **correct orientation** of the opamps.







## ***The Initial Powering up***

Make sure volume control has been turned to minimal when using your Funk for the first time. Always power on your source machine first and your power amp last. When powering down your system reverse the steps.

## ***Free Warranty Extension***

All Burson Audio products are covered by 24 months of warranty (See conditions below). You can extend the warranty to 3 years by registering your Funk unit on our warranty page:

<https://www.bursonaudio.com/warranty/>.

## ***Warranty Conditions***

Burson Audio warrants that this product shall be free from defects in materials and workmanship for: The warranty period begins at the date of sale and is subject to the following requirements and understandings:

1. This is a non-transferable warranty.
2. This product is only warranted in the country of original sale by Burson / authorised dealer.
3. The product must not have been modified in any manner whatsoever, or the warranty is immediately voided.
4. The product must not have been stored in a humid, damp environment; nor subjected to weather, water, or salt spray.
5. During the warranty period, Burson will replace a defective Burson Funk with a similar available product, at no cost to the owner for labour, materials, and shipping charges from Burson.
6. Burson shall not, under any circumstances, be liable for any incidental or consequential damages arising from the loss of property or other damage or losses due to the failure of a Burson Funk. Burson will not pay for loss of use or inconvenience caused by the failure of a Burson Funk. Burson will not pay for damage caused to other audio components caused by the failure of the Burson Funk within the limits allowed by Australian Law.
7. The compatibility between our USB receiver and your computer is dependent on software drivers provided to Burson by the USB chip manufacturer. Therefore Burson cannot guarantee the compatibility of our USB receiver during or after the warranty period.