

Split Wing Nut Installation Instructions

Tools Required: Phillips Head Screwdriver



Important: Rinse and dry underside of mounting bases (confirm clear rubber gaskets are in place). Clean mounting surface of toilet bowl (around holes) with Windex® or any glass cleaner.

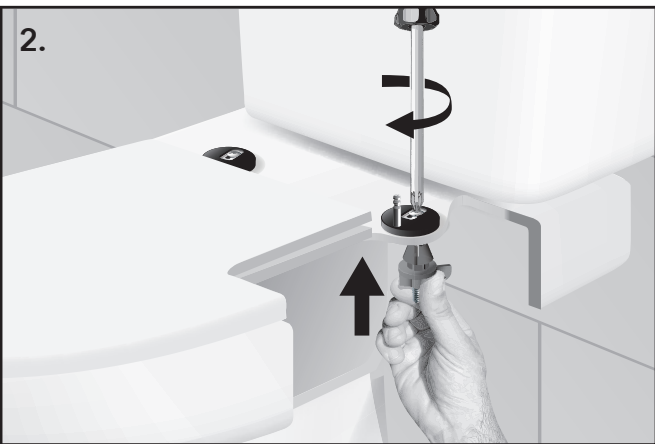


1. Install mounting bases on toilet bowl.

- a. Place mounting bases over holes with posts facing the front of the bowl.
- b. Place stainless steel washers in mounting base slots.
- c. Insert screws through the washers, mounting bases and holes in the toilet.

2. Install wing nuts. **DO NOT** turn wing nuts.

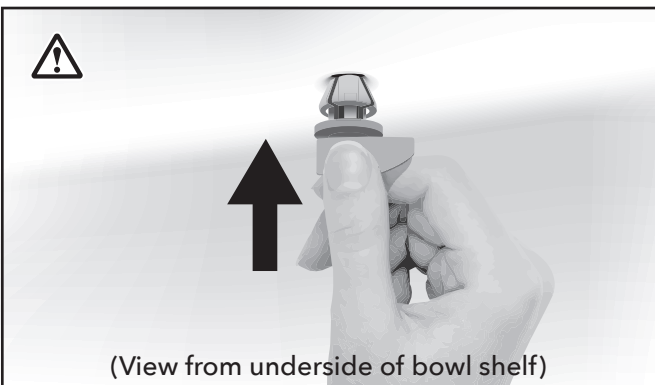
Thread wing nut by turning the screw. Do not completely tighten until the seat is attached and adjusted.



3. Attach seat, adjust, and tighten screws very firmly. (It may be necessary to hold wing nut to keep it from turning.)

⚠ Note: Wing nuts work on a wedge principle. For final tightening, the tips must be centered in the underside of the mounting hole. If not tightening, move wing nut around while pushing upward until tips slip into the hole. As the screw turns, the points of the wing nut are squeezed tighter into the mounting hole.

Note: Industry standard mounting holes are round and $\frac{5}{8}$ inch in diameter. If your toilet holes are not standard we recommend using our "Original" mounting hardware available at BathRoyale.com.



CARE & CLEANING TIP: DO NOT spray or saturate the mounting bases. (Doing so may cause the seat to move out of position.) Spray your cloth first, then wipe.