

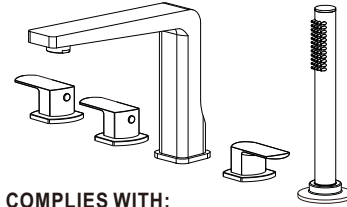
BATH ROYALE

INSTALLATION INSTRUCTIONS

Thank you for selecting Bath Royale®, the benchmark for quality and function. To ensure that your installation proceeds smoothly, please read these instructions carefully before your begin.

Trim Kit 600DM MILANO DECK MOUNT TUB FILLER

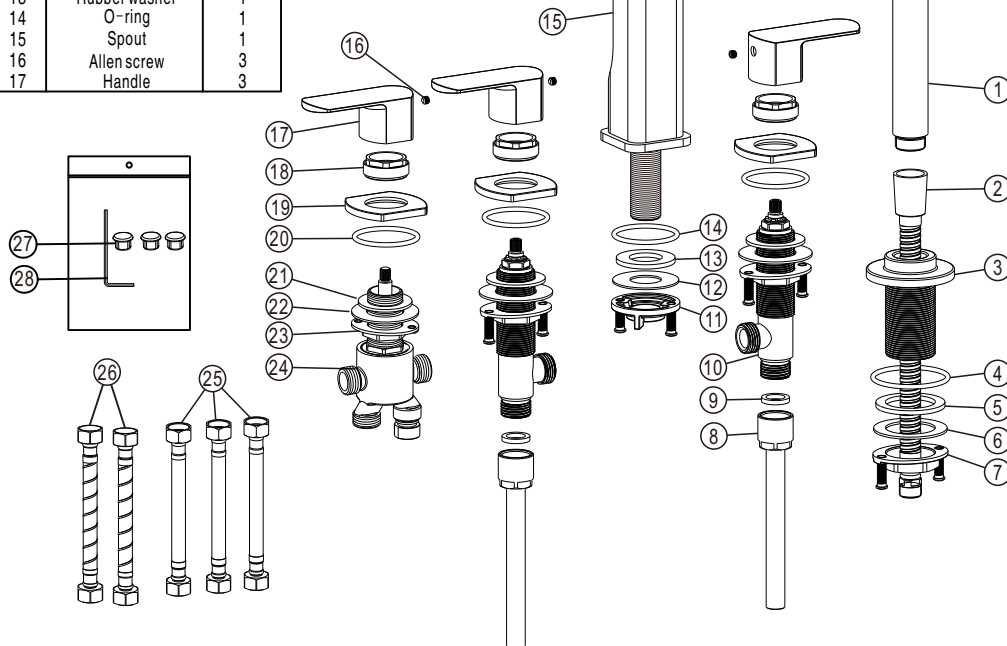
Requires DMTF Rough-In Parts (Sold Separately)



COMPLIES WITH:

- CUPC
- ASME A112.18.1 / CSAB125.1

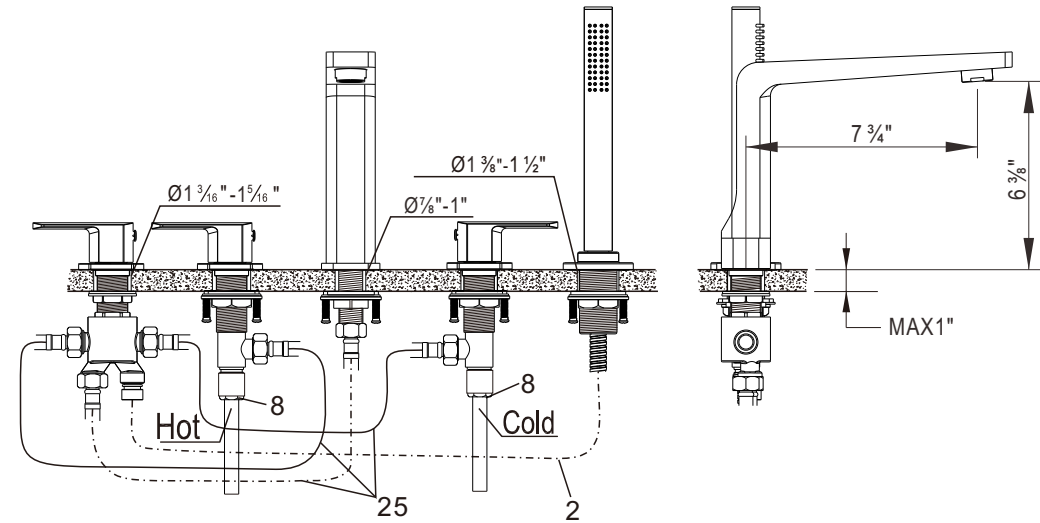
Code	The Accessory List	Quantity	Code	The Accessory List	Quantity
1	Hand spray	1	18	Top nut	3
2	Shower hose	1	19	Base plate	3
3	Spray holder	1	20	O-ring	3
4	O-ring	1	21	Rubber washer	3
5	Rubber washer	1	22	Stainless washer	3
6	Stainless washer	1	23	Bottom nut	3
7	Bottom nut	1	24	Diverter valve	1
8	Copper tubes	2	25	Connection hoses	3
9	Rubber washer	2	26	Supply hoses	2
10	Hot & cold valve	2	27	Plug button	3
11	Bottom nut	1	28	Allen wrench	1
12	Stainless washer	1			
13	Rubber washer	1			
14	O-ring	1			
15	Spout	1			
16	Allen screw	3			
17	Handle	3			



FINISHES

CP(Chrome Plated), MB(Matte Black), BN(Brushed Nickel), BG(Brushed Gold)

Rough-In Dimensions

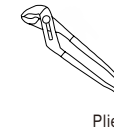


CAUTION: Flush water lines before installing this product.

Recomended tools and materials :



Screwdriver



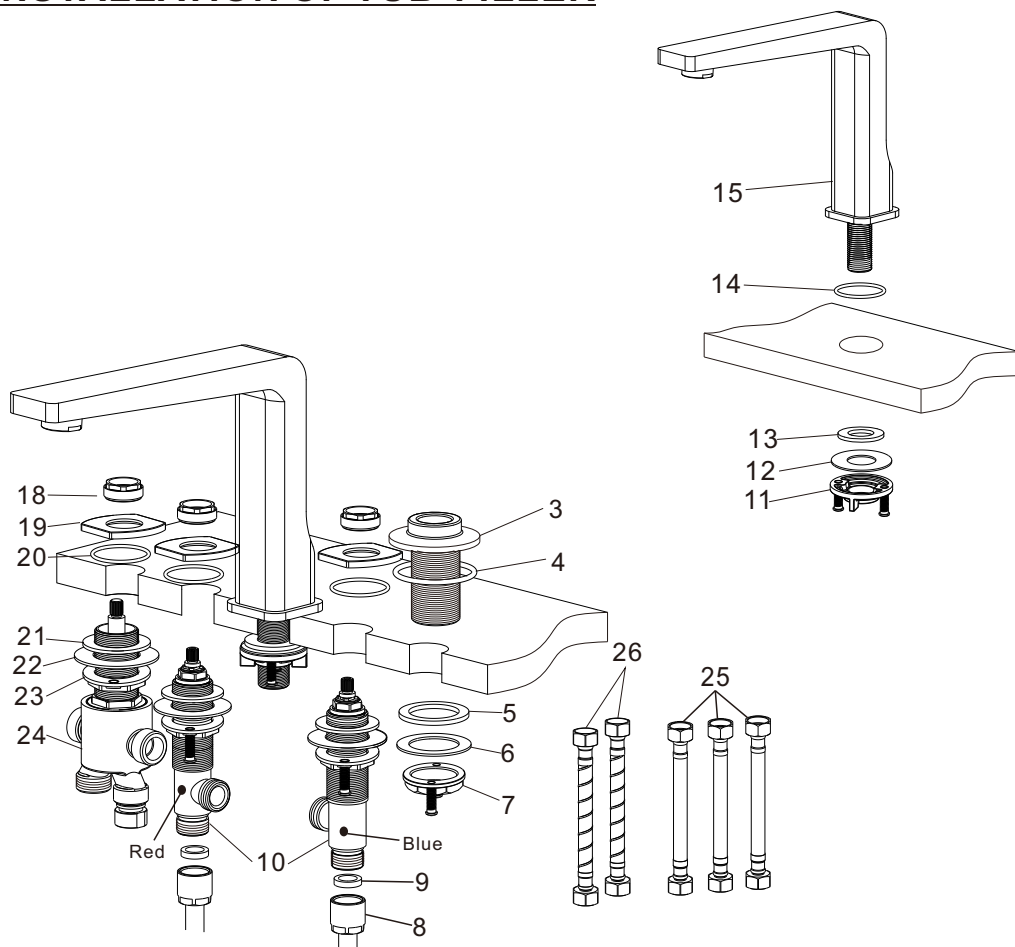
Plier



Adjustable Wrench

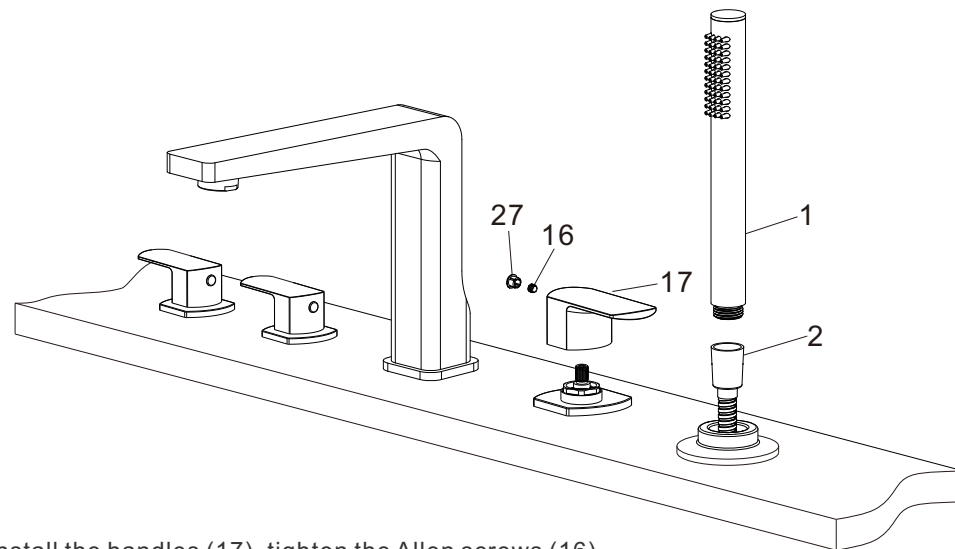
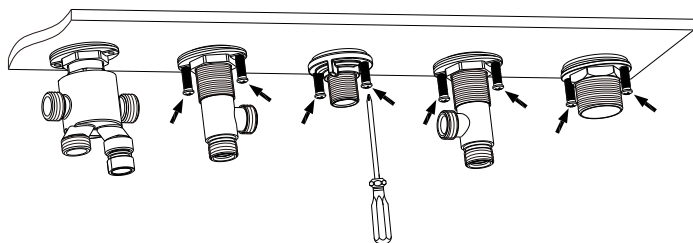
Operating Pressure: 20 PSIG to 125 PSIG
Operating Temperature: 40°F to 150°F

INSTALLATION OF TUB FILLER



- 1) Pass valve bodies (red/left, blue/right), spout and spray holder through mounting holes in deck and secure with base plates, O-rings and nuts.

TIP: Bottom nuts include screws for final tightening. Hand-tighten top nuts and snug bottom nuts with screws.



- 2) Install the handles (17), tighten the Allen screws (16) and install the plug buttons (27).
- 3) Connect the hand spray (1) onto the shower hose (2).
- 4) Connect supply lines and hoses (see Rough-In diagram)

TIP: For connecting water supplies, use copper tubes (8) or flexible supply hoses (26).

IMPORTANT: Check all water connections for leaks.

CARE & CLEANING:

DO: Simply rinse product with clean water and dry with a soft cloth (cotton flannel preferred).

DO NOT USE: Brushes, scouring pads, aerosols, soaps, harsh chemicals or cleaners containing polish, abrasives, acid, ammonia, chlorine or bleach.