

Tools Required:

1. Philips Head Screwdriver



BATH ROYALE

LUXURY BATHROOM ACCESSORIES

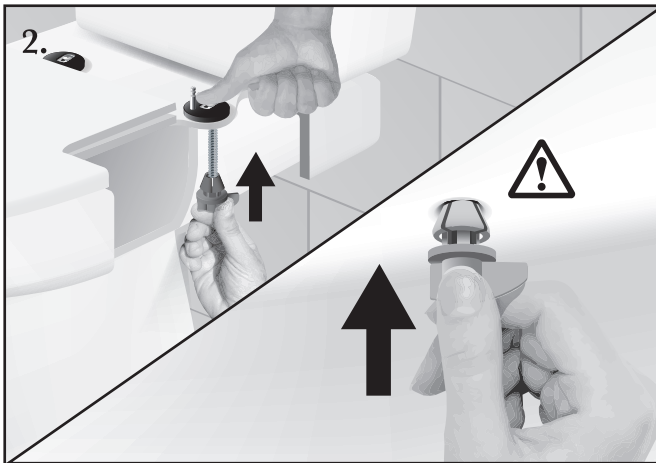
Split Wingnut Installation Instructions

IMPORTANT: Make sure the round mounting bases have clear rubber gaskets pre-installed on the underside and that they are clean and dry. **TIP:** Use a little Windex® or any glass cleaner around the mounting holes of the toilet to get the mounting surface squeaky clean.



1. Install mounting bases on toilet bowl.

- a) Place mounting bases over holes with posts facing the front of the bowl.
- b) Place stainless steel washers in mounting base slots.
- c) Insert screws through the washers, mounting bases and holes in the toilet.

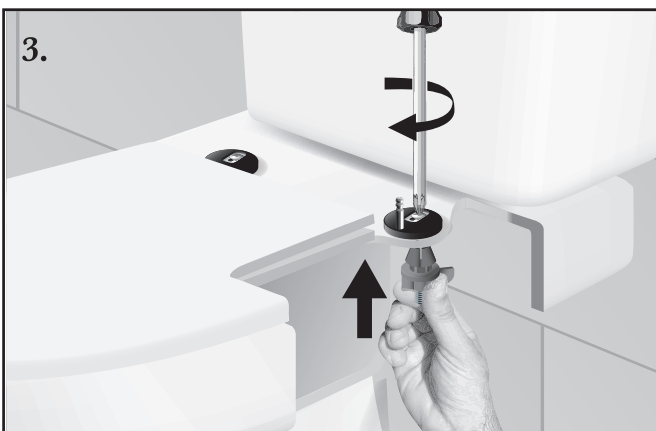


2. Install wingnuts.

- a) Hold screw down and slide the wingnut up the length of the screw.
- b) While pressing upward, move the wingnut around until the tips slip into the hole.



Be sure the tips of the wingnut are centered in the underside of the mounting hole.



3. Thread wingnuts (wedge principal).

Hold wingnut at bottom and press upward while turning the screw from the top with a screwdriver. As screw tightens, tips of wingnut are wedged into the hole.

Adjust seat and tighten very firmly.

NOTE: If the mounting holes in your toilet are not industry standard (round and 5/8 inch in diameter), split wingnut may not thread. In this case, please contact us and we will expedite alternative mounting hardware.

Questions? Visit bathroyale.com or call 704-589-1009