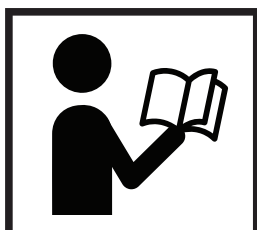


### MODEL TMG-TSG26

# 26" 3-Point Hitch Stump Grinder



#### **⚠ WARNING**



- Please read and understand the product manual completely before assembly
- Check against the parts list to make sure all parts are received
- Wear proper safety goggles or other protective gears while in assembly
- Do not return the product to dealer. They are not equipped to handle your requests.

Missing parts or have questions on assembly?

Please call: 1-877-761-2819 or email: [cs@tmgindustrial.com](mailto:cs@tmgindustrial.com)

## Content

Introduction.....	2
Intended use.....	3
Technical specificaiton.....	3
General safty rules.....	4
Personal safty.....	5
Tool use and care.....	6
Maintenance.....	8
Replacing teeth.....	9
Part list.....	9

# INTRODUCTION

Congratulations on your purchase and welcome to TMG. This manual gives you the necessary information about your machine so you will be able to use it properly.

The entire manual must be read and understood before you start using the machine. If any questions should arise that are not covered by this manual, please contact TMG.

---

## **OWNER'S RECORD**

Please take a moment to record the following information about your stump grinder. If you need to call for assistance, please be ready to provide your model number. This information will allow us to help you more quickly when you call.

### **MODEL NUMBER**

### **SERIAL NUMBER**

### **DATE OF PURCHASE**

---

This machine is designed for certain applications only. We strongly recommend this machine is not modified and/or used for any application other than that for which it was designed. If you have any questions relative to a particular application, **DO NOT** use the machine until you have first contacted us to determine if it can or should be performed on the product.

For technical questions and replacement parts, please contact TMG.

## INTENDED USE

This stump grinder is designed for grinding stumps using a tractor PTO at 540 RPM.

## TECHNICAL SPECIFICATIONS

Model	SG24	SG24-PRO
Recommended HP	30 HP - 50 HP	
Rotor Size	24"	
Number of Teeth	36	54
Tooth Construction	Carbide steel bolt-in	
Required PTO Speed	540 RPM	
Cutting Wheel Speed	950 RPM	
Cutting Height	18" above ground	
Cutting Depth	8" below ground	
Maximum Cutting Depth (per pass)	6"	
Maximum Horizontal Cut	26"	
Swing Arc	40°	
Hitch Category	Cat. I or II	
Shipping Weight	280kg	

## **GENERAL SAFETY RULES**

### **WARNING!**

Read and understand all instructions. Failure to follow all instructions listed below may result in electric shock, fire and/or serious injury.

### **WARNING!**

The warnings, cautions, and instructions discussed in this instruction manual cannot cover all possible conditions or situations that could occur. It must be understood by the operator that common sense and caution are factors which cannot be built into this product, but must be supplied by the operator.

**NOTE:** All the laws and any regulation having jurisdiction covering the safety requirements for use of the machine take precedence over the statements in this manual. Users of this machine must adhere to such regulations.

Only people that have read and understood these instructions are able to use the stump grinder.

Inspect the stump grinder and tractor at the beginning of every working day and repair any defects.

Stop the engine and make sure that the machine will not start accidentally while repairing defects or doing maintenance.

Do not remove the stump grinders safety devices or make them inactive.

Always locate buried wires, cables, and pipelines before grinding.

## PERSONAL SAFETY

**Stay alert**, watch what you are doing and use common sense when operating the machine. Do not use the machine while you are tired or under the influence of drugs, alcohol or medication. A moment of inattention while operating machines may result in serious personal injury.

**Dress properly**. Do not wear loose clothing, dangling objects, or jewelry. Keep your hair, clothing and gloves away from moving parts. Loose clothes, jewelry or long hair can be caught in moving parts. Air vents often cover moving parts and should be avoided.

**Use safety apparel and equipment**. Use safety goggles or safety glasses with side shields which comply with current national standards, or when needed a face shield. Use a dust mask in dusty work conditions.

This applies to all persons in the work area. Also use safety shoes, hardhat, gloves, dust collection systems, and hearing protection when appropriate.

**Do not over reach**. Keep proper footing and balance at all times.

**Remove adjusting keys or wrenches** before connecting to the power supply or turning on the tool. A wrench or key that is left attached to a rotating part of the tool may result in personal injury.

**Never conduct any maintenance or make any other adjustments when the engine is running**. Always shut the engine off, remove the ignition key, and keep the engine off before carrying out any of the aforementioned procedures. Consult your engine manual for safe shut down procedures to prevent accident ignition.

**Never** allow passengers on the stump grinder.

## TOOL USE AND CARE

**Always** be sure operator is familiar with proper safety precautions and operation techniques before using machine.

**Do not force the machine.** Machines do a better and safer job when used in the manner for which they are designed.

**Storing the machine.** When the machine is not in use, store it in a dry, secure place or keep well covered and out of the reach of children.

Inspect the machine for good working condition prior to storage and before re-use .

**Maintain the machine.** It is recommended that the general condition of the machine be examined before it is used. Keep the machine in good repair by adopting a program of conscientious repair and maintenance in accordance with the recommended procedures found in this manual.

If any abnormal vibrations or noise occurs, turn the machine off immediately and have the problem corrected before further use.

**Cleaning.** Use a pressure washer to clean the carbide teeth while taking care not to pressure wash the bearings as this may introduce water into areas of the machine that will result in malfunction or damage.

**Use only accessories that are recommended** by the manufacturer. Accessories that may be suitable for another machine may create a risk of injury when used on this machine.

**Always** operate the machine with all safety devices and guards in place and in working order. **DO NOT** modify or make changes to safety devices.

**DO NOT** operate the machine if any safety devices or guards are missing or inoperative.

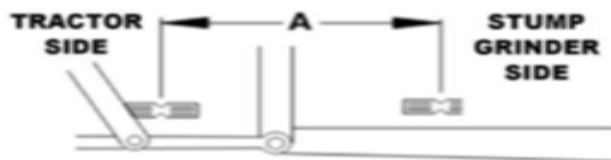
**Never leave the machine running unattended.**

**Never use the machine to grind anything other than stumps** or for any purpose other than grinding stumps as described in this manual.

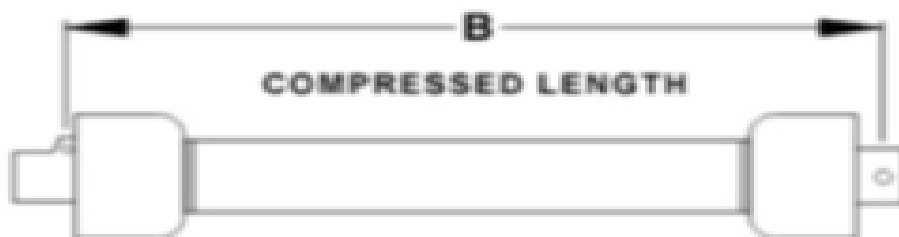
## STUMP GRINDER SET-UP PROCEDURES TRIMMING THE PTO SHAFT

The stump grinder is shipped with a PTO shaft that can be fitted to most tractors. The PTO shaft may need to be trimmed depending on your tractor and configuration. Follow the below steps to ensure that the PTO shaft is fitted to your tractor correctly.

1. Attach the stump grinder to the tractor, but do not install the PTO shaft.
2. Raise the stump grinder using the tractors 3 point hitch system so that the shaft on the tractor is level with the shaft on the stump grinder.
3. Measure the distance between the locking grooves on the shaft of the tractor and stump grinder (A) as shown below.



4. Measure the distance between the locking pins on the PTO shaft itself when it is in the compressed/shortest length (B) as shown below.



5. If (A) is at least 1" longer than (B), the PTO shaft will not need to be cut.
6. If dimension (B) is longer than (A), the PTO shaft will need to be cut. The below equation may be used to calculate the correct amount to trim.

$$(B-A) + 1 \text{ INCH} = C \text{ (AMOUNT TO CUT)}$$

7. Once (C) has been calculated; this amount will need to be cut off of BOTH halves of the PTO shaft.
8. After both halves of the PTO shaft have been cut, use a file to remove any burrs or sharp edges and slide the shaft together ensuring it telescopes in and out freely. The PTO shaft can now be attached to the stump grinder and tractor, ready for use.

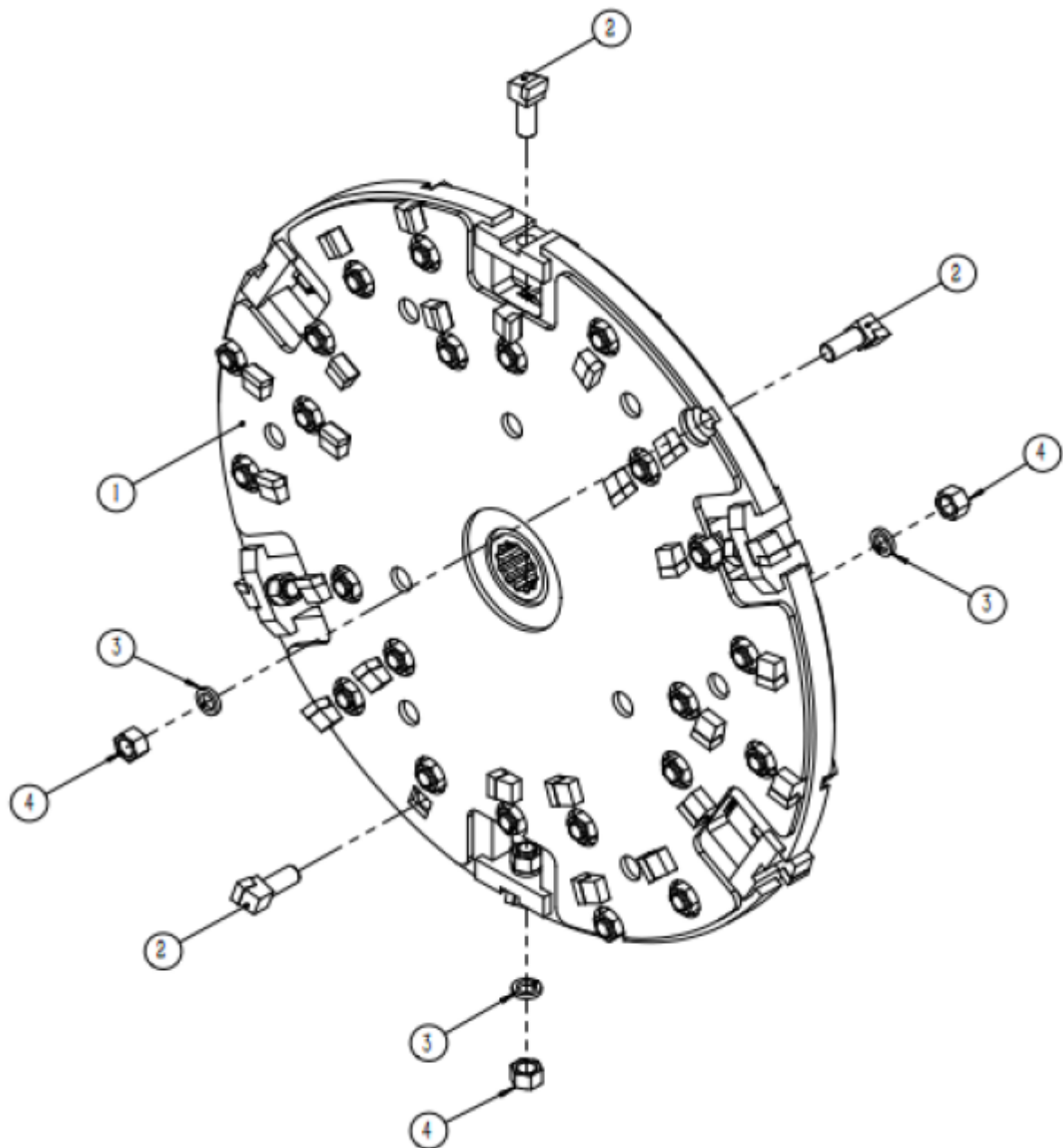


## MAINTENANCE

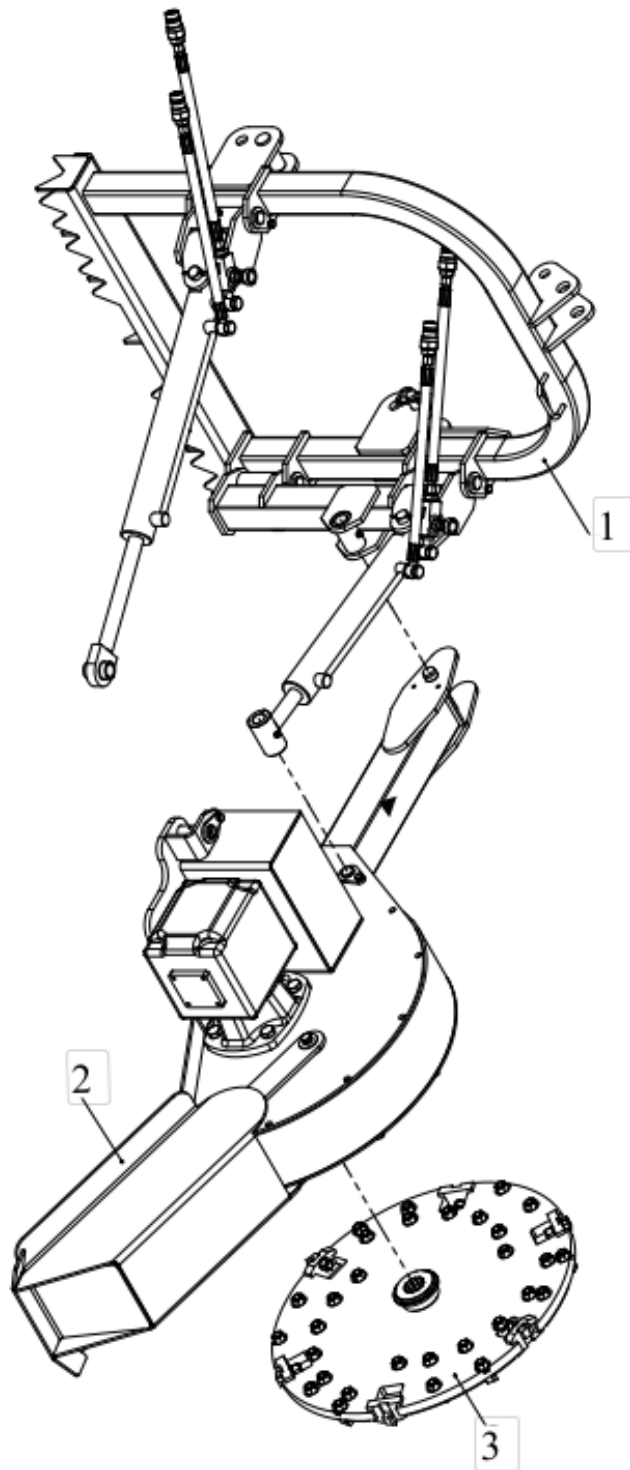
1. Proper and routine maintenance is critical to operator safety, achieving proper stump grinding results and in prolonging the life of the machine.
2. For cleaning and maintenance of the stump grinder, switch off the tractor PTO shaft and turn the engine off.
3. Inspect the unit before each use for loose nuts and worn cutting teeth. Also clean any build up of debris.
4. After 2 hours of operation, check for loose nuts and worn cutting teeth. Tighten and replace as necessary.
5. Grease the bearings and the pivot pins on the main housing as needed before each use. Do not over grease the the bearings as this will blow out the seals and cause premature bearing failure.
6. Inspect the clutch plates on the PTO shaft periodically to ensure that they are not seized together. Refer to “ PTO Shaft Clutch Run In” in the “ Stump Grinder Set Up Procedures” section of the manual.

## REPLACING TEETH

1. Disconnect the PTO shaft from the tractor and set the stump grinder on a flat and level surface.
2. Remove the lock nut using a wrench or socket.
3. Remove the cutting tooth.
4. Install a replacement tooth and lock nut using a torque wrench set to 160 ft-lbs (215 Nm)

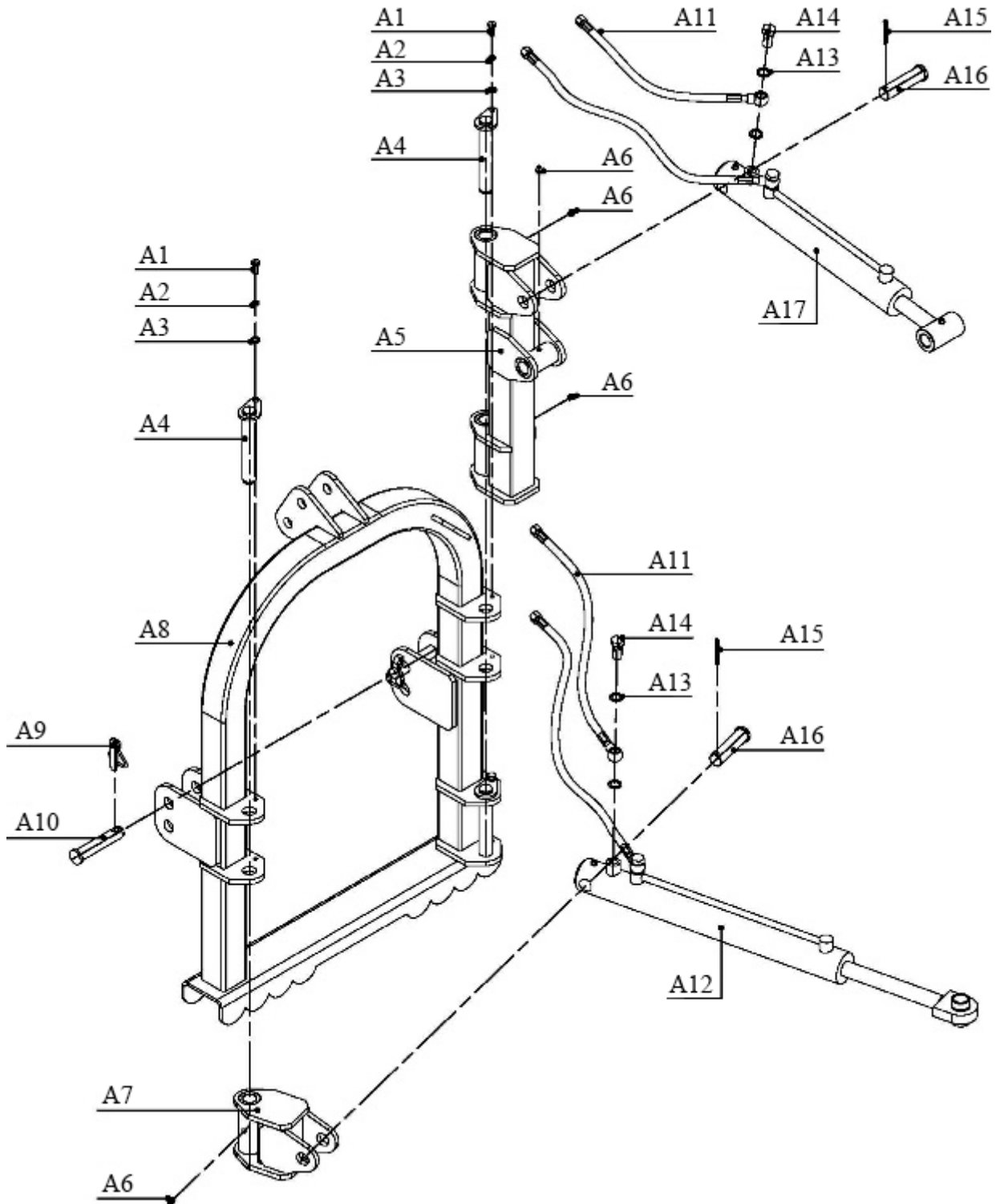


## Exploded View of STUMP GRINDER-TMG-TSG26



NO.	PART NO.	Name & Specifications	QTY
1	SG24.001	Lifting & Hydraulic Assy	1
2	SG24.002	Swing & Transmission Assy	1
3	SG24.003	Cutter head Assy, single side	
	SG24.003-A	Cutter head Assy, double side	1

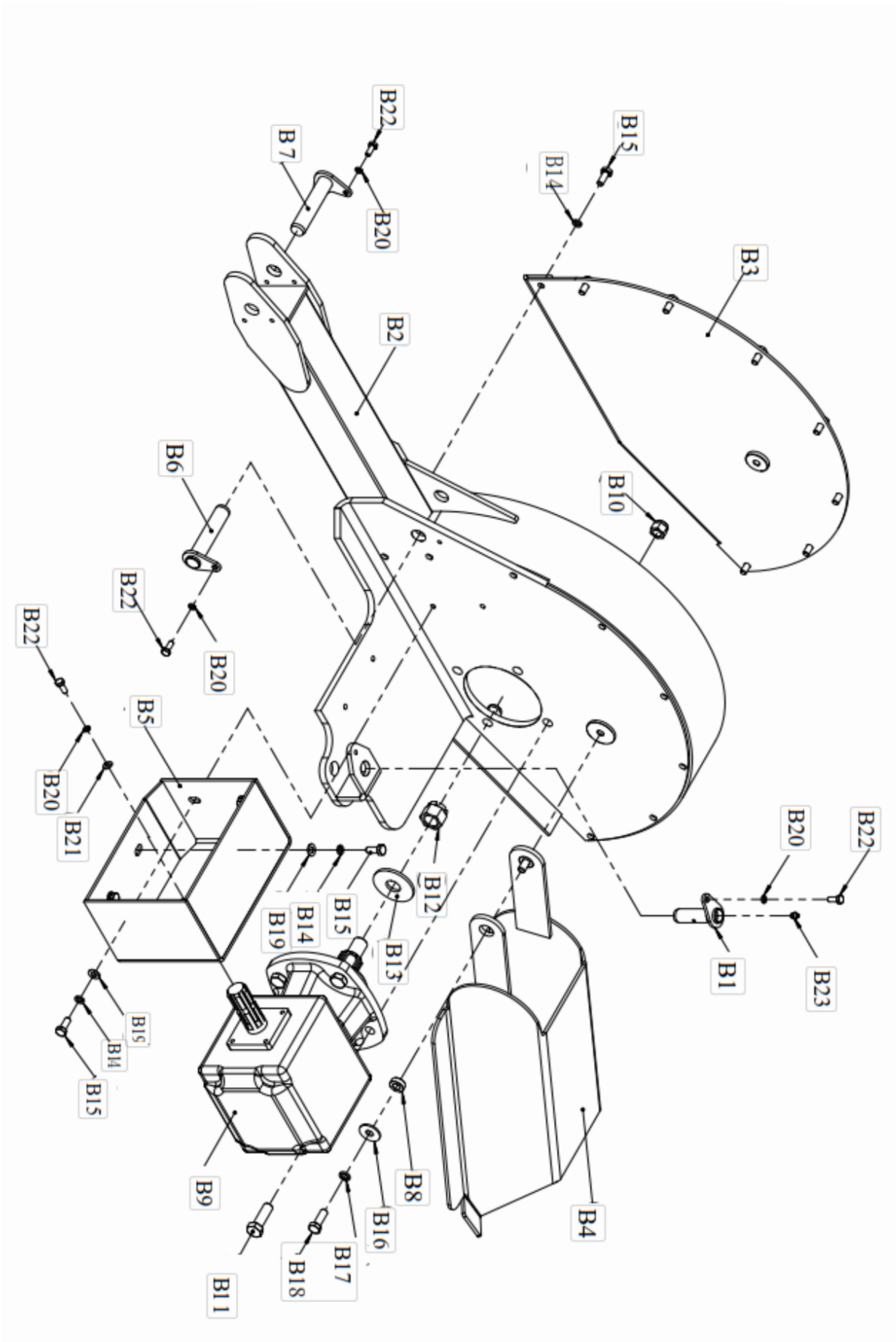
# SG24.001 Lifting & Hydraulic Assy



**SG24.001**

NO	PAR NUMBER	DESCRIPTON	QTY
A1	GB/T5783-2000	BOLT M8X20	3
A2	GB/ T93-1987	SPRING WASHER 8	3
A3	GB/T97. 1-2002	WASHER 8	3
A4	SG24.01.011	AXLE PIN 155	3
A5	SG24.01.012	BIG SWAY SEAT BIG SWAY SEAT WELDMENT	1
A6	JB/T7940.1-1995	GREASE CUT M8	4
A7	SG24.01.013	SMALL SWAY SEAT WELDMENT	1
A8	SG24.01.014	HANGING WELDMENT	1
A9		LOCK PIN 12	2
A10	SG24.01.101	LOWER HANGING PIN	2
A11	SG24.01.015	OIL HOSE	4
A12	SG24.01.016	SWAY CYLINDER FOR RIGHTAND LEFT MOVEMENT	1
A13	JB/T982-1977	BONDED WASHER 16	8
A14	BH5.60.110	HOLLOW BOLT 16	4
A15	GB/T91-2000	SPLITPIN 5X40	2
A16	SG24.01.102	AXLE PIN 97	2
A17	SG24.01.017	SWAY CYLINDER FOR UP AND DOWN MOVEMENT	1

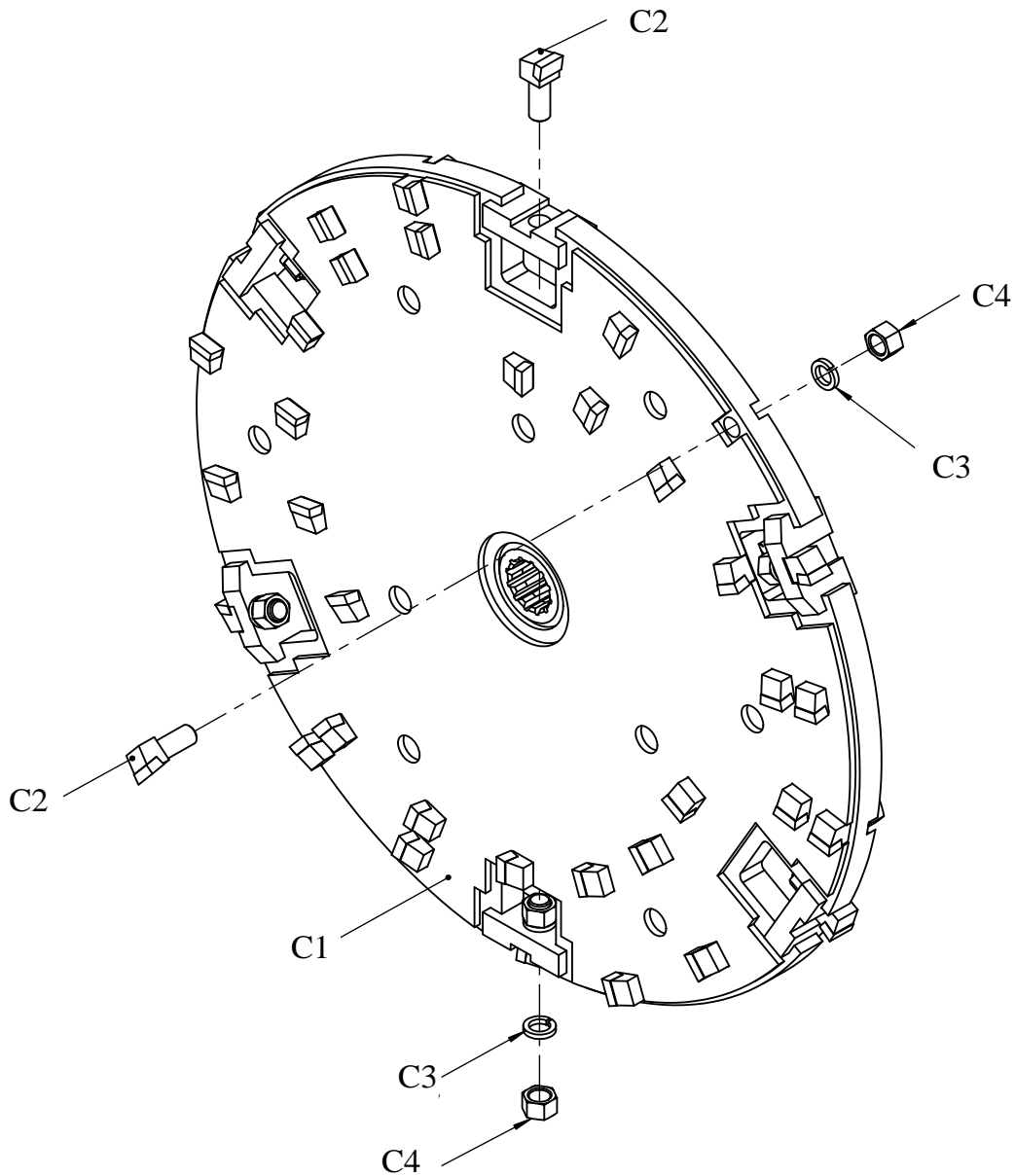
# SG24.002 Swing & Transmission Assy



## SG24.002

NO.	PART NO.	Name & Specifications	QTY
B1	SG24.02.011	Pin weldment, 85	1
B2	SG24.02.013	Swing arm weldment	1
B3	SG24.02.015	Wheel guard weldment	1
B4	SG24.02.016	Guard weldment	1
B5	SG24.02.017	Lid weldment, shield	1
B6	SG24.02.018	Pin weldment	1
B7	SG24.02.019	Pin weldment, 125	1
B8	SG24.02.101	Sleeve	2
B9	XH50.169Z.01L	Gearbox Assy	1
B10	GB889. 1-M16	Lock Nut M16	4
B11	GB5783-M16×50	Bolt M16×50	4
B12	GB6178-M24	Slotted Round Nut M24	1
B13	GB96. 2-24	Large Plain Washer 24	1
B14	GB93-10	Spring washer 10	12
B15	GB5783-M10×25	Bolt M10×25	12
B16	GB96. 2-12	Large Plain Washer 12	2
B17	GB93-12	Spring washer 12	2
B18	GB5783-M12×35	Bolt M12×35	2
B19	GB97. 1-10	Plain Washer 10	4
B20	GB93-8	Spring washer 8	8
B21	GB97. 1-8	Plain Washer 8	4
B22	GB5783-M8×20	Bolt M8×20	8
B23	JB7940. 1-8	Oil cup 8	1

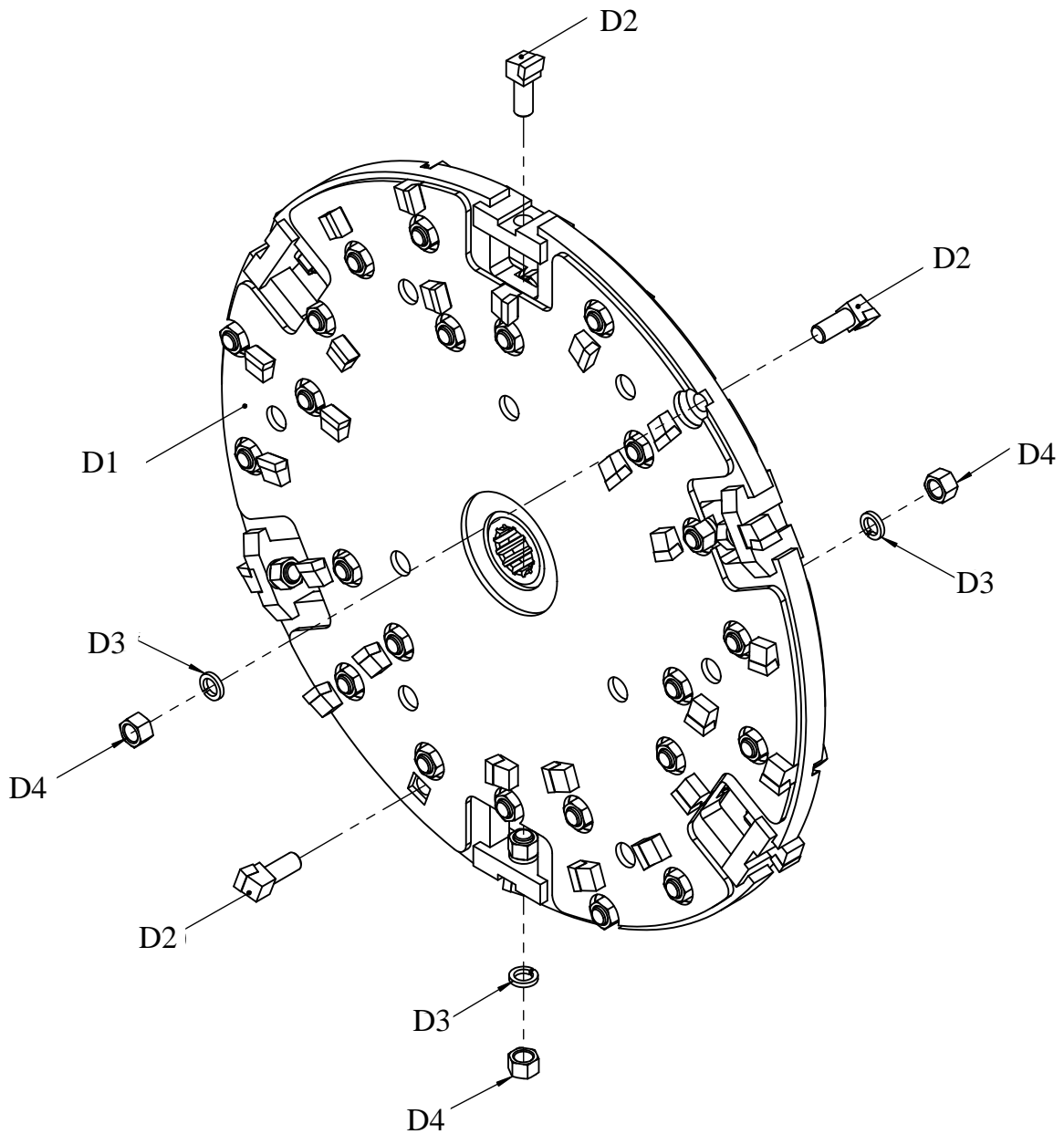
## SG24.003 Cutter head Assy, single side



NO.	PART NO.	Name & Specifications	QTY
C1	SG24.02.014	Grinder wheel weldment, single side	1
C2	SG24.02.012	Carbide tooth weldment	36
C3	GB93-14	Spring washer 14	36
C4	GB6171-M14x1.5	Nut M14x1.5	36



## SG24.003-A Cutter head Assy, single side



NO.	PART NO.	Name & Specifications	QTY
D1	SG24.02.014A	Grinder wheel weldment, double side	1
D2	SG24.02.012	Carbide tooth weldment	36
D3	GB93-14	Spring washer 14	36
D4	GB6171-M14x1.5	Nut M14x1.5	36