

3PT FINISH MOWER



⚠ WARNING



- Please read and understand the product manual completely before assembly
- Check against the parts list to make sure all parts are received
- Wear proper safety goggles or other protective gears while in assembly
- Do not return the product to dealer. They are not equipped to handle your requests.

Missing parts or have questions on assembly?

Please call: 1-877-761-2819 or email: cs@tmgindustrial.com

CONTENTS

IMPORTANT SAFETY INFORMATION.....	3
Safety always	3
Transport machinery safely	4
Safety Labels.....	4
INTRODUCTION.....	5
Using This Manual.....	5
Terminology	5
Owner Assistance.....	5
SECTION 1: ASSEMBLY AND SET-UP	6
Tractor Requirements.....	6
Packing Description.....	6
Installation Wizard.....	10
Tractor Hook-Up.....	12
Driveline Installation	12
SECTION 2: OPERATING INSTRUCTIONS.....	12
Transporting	12
Mowing Instructions	13
Operating Instructions	13
SECTION 3: ADJUSTMENTS	13
Leveling the Mower	13
Cutting Height Adjustment	13
3-Point Hitch Adjustments	14
Belt Tension	14
SECTION 4: MAINTENANCE AND LUBRICATION	14
Maintenance	14
Knife Replacement	14
V-Belt Installation.....	14
Storage	15
Lubrication	15
SECTION 5: SPECIFICATIONS & CAPACITIES	15
SECTION 6: TROUBLESHOOTING.....	16
SECTION 7: APPENDIX	16
Warranty	16
Bolt Torque	17
PART BREAKDOWN LIST	17

IMPORTANT SAFETY INFORMATION

Safety always

Thoroughly read and understand the instructions given in this manual before operation. Refer to the "Safety Decal", read all instructions noted on them.

Do not allow anyone to operate this equipment who has not fully read and comprehended this manual and who has not been properly trained in the safe operation of the equipment.

1. Operator should be familiar with all functions of the unit. Operate implement from the driver's seat only.
2. Make sure all guards and shields are in place and secured before operating the implement.
3. Do not leave tractor or implement unattended with engine running.
4. Dismounting from a moving tractor could cause serious injury or death.
5. Do not stand between tractor and implement during hitching.
6. Keep hands, feet, and clothing away from power-driven parts.
7. Wear snug fitting clothing to avoid entanglement with moving parts.
8. Watch out for wires, trees, etc., when raising implement. Make sure all persons are clear of working area.
9. Turning tractor too tight may cause implement to ride up on wheels. This could result in injury or equipment damage.

Look For the Safety Alert Symbol

The SAFETY ALERT SYMBOL indicates there is a potential hazard to personal safety involved and extra safety precaution must be taken. When you see this symbol, be alert and carefully read the message that follows it. In addition to design and configuration of equipment, hazard control and accident prevention are dependent upon the awareness, concern, prudence, and proper training of personnel involved in the operation, transport, maintenance and storage of equipment.

Be aware of signal words

A signal word designates a degree or level of hazard seriousness. The signal words are:



DANGER

Indicates an imminently hazardous situation which, if not avoided, will result in death or serious injury. This signal word is limited to the most extreme situations, typically for machine components that, for functional purpose, cannot be guarded.



WARNING

Indicates a potentially hazardous situation which, if not avoided, could result in death or serious injury, and includes hazards that are exposed when guards are removed. It may also be used to alert against unsafe practices.



CAUTION

Indicates a potentially hazardous situation which, if not avoided, may result in minor or moderate injury. It may also be used to alert against unsafe practices.

For you protection

Thoroughly read and understand the "safety label" section, read all instructions noted on them.

Shut down and storage

Lower machine to ground, put tractor in park, turn off engine, and remove the ignition key.

Detach and store implements in a area where children normally do not play. Secure implement by using blocks and supports.

Use safety lights and devices

Slow moving tractors, self-propelled equipment, and towed implements can create a hazard when driven on public roads. They are difficult to see, especially at night.

Flashing warning lights and turn signals are recommended whenever driving on public roads. Use lights and devices provided with implement.

Transport machinery safely

1. Comply with state and local laws.
2. Maximum transport speed for implement is 20 mph. Do not exceed. Never travel at a speed which does not allow adequate control of steering and stopping. Some rough terrain require a slower speed.
3. Sudden braking can cause a towed load to swerve and upset. Reduce speed if towed load is not equipped with brakes.
4. Use the following maximum speed - tow load weight ratios as a guideline:
5. 20 mph when weight is less than or equal to the weight of tractor.
6. 10 mph when weight is double the weight of tractor.
7. **IMPORTANT:** Do not tow a load that is more than double the weight of tractor.

Keep riders off machinery.

Riders obstruct of operator's view, they could be struck by foreign objects or thrown from the machine.

Never allow children to operate equipment.

Practice safe maintenance

1. Understand procedure before doing work. Use proper tools and equipment. refer to Operator's
2. Manual for additional information.
3. Work in a clean dry area.
4. Lower the implement to the ground, put tractor in park, turn off engine, and remove key before performing maintenance.
5. Allow implement to cool completely.
6. Do not grease or oil implement while it is operation.
7. Inspect all parts. Make sure parts are in good condition and installed properly.
8. Remove buildup of grease, oil or debris.
9. Remove all tools and unused parts from implement before operation.
10. Prepare for emergencies
11. Be prepared if a fire starts.
12. Keep a fist aid kit and fire extinguisher handy.
13. Keep emergency numbers for doctor, ambulance, hospital and fire department near phone.

Wear protective equipment.

1. Protective clothing and equipment should be worn.
2. Wear clothing and equipment appropriate for the job. Avoid loose fitting clothing.
3. Prolonged exposure to loud noise can cause hearing impairment or hearing loss. Wear suitable hearing protection such as earmuffs or earplugs.
4. Operating equipment safely requires the full attention of the operator. Avoid wearing radio headphones while operating machinery.

Avoid high pressure fluids hazard.

1. Escaping fluid under pressure can penetrate the skin causing serious injury.
2. Avoid the hazard by relieving pressure before disconnecting hydraulic lines.
3. Use a piece of paper or cardboard, not body parts, to check for suspected leaks. Wear protective gloves and safety glasses or goggles when working with hydraulic systems.
4. If an accident occurs, see a doctor immediately. Any fluid injected into the skin must be treated within a few hours or gangrene may result.

Safety Labels

Your Flail Mower comes equipped with all safety labels in place. They were designed to help you safely operate your implement.

Read and follow their directions.

1. Keep all safety labels clean and legible.
2. Replace all damaged or missing labels. To order new labels go to your nearest TMG dealer or visit our dealer locator at TMG.com.

3. Some new equipment installed during repair requires safety labels to be affixed to the replaced component as specified by TMG. When ordering new components make sure the correct safety labels are included in the request.
4. Refer to this section for proper label placement. To install new labels:
 - a. Clean the area the label is to be placed.
 - b. Spray soapy water on the surface where the label is to be placed.
 - c. Peel backing from label. Press firmly onto the surface.
 - d. Squeeze out air bubbles with the edge of a credit card.



Safety labels



Introduction

TMG welcomes you to the growing family of new product owners. This

implement has been designed with care and built by skilled workers using quality materials. Proper assembly, maintenance, and safe operating practices will help you get years of satisfactory use from the machine.

The Finish Mowers are designed for Category 1 - three point hitch or Quick-Hitch System mounting. These Fixed Bar Finish Mowers are ideal for ripping, leveling, finish grading, and backfilling applications at feedlots, outdoor arenas, building sites, and maintenance operations on farm and ranch lanes or roadways.

Using This Manual

1. This Operator's Manual is designed to help familiarize you with safety, assembly, operation, adjustments, troubleshooting, and maintenance. Read this manual and follow the recommendations to help ensure safe and efficient operation.
2. The information contained within this manual was current at the time of printing. Some parts may change slightly to assure you of the best performance.
3. To order a new Operator's or Parts Manual contact your authorized dealer. Manuals can also be printed from the TMG Service & Support Center by your dealer.

Terminology

"Right" or "Left" as used in this manual is determined by facing the direction the machine will operate while in use unless otherwise stated.

Note: A special point of information that the operator must be aware of before continuing.

Important: A special point of information related to its preceding topic. The intention is that this information should be read and noted before continuing.

Owner Assistance

The Warranty Registration card should be filled out by the dealer at the time of purchase. This information is necessary to provide you with quality customer service. If customer service or repair parts are required contact a dealer. A dealer has trained personnel, repair parts and equipment needed to service the machine.

The parts on your machine have been specially designed and should only be replaced with genuine parts.

Serial Number Plate

For prompt service always use the serial number and model number when ordering parts from your dealer. Be sure to include your serial and model numbers in correspondence also.

Section 1: Assembly and Set-up

Tractor Requirements

This mower is designed with a 3-Point category 1 hitch. Tractor horsepower rating should not exceed 50 PTO horsepower.

Packing Description

Remove any loose parts or packaging from the crate. Check goods without damage and omission.

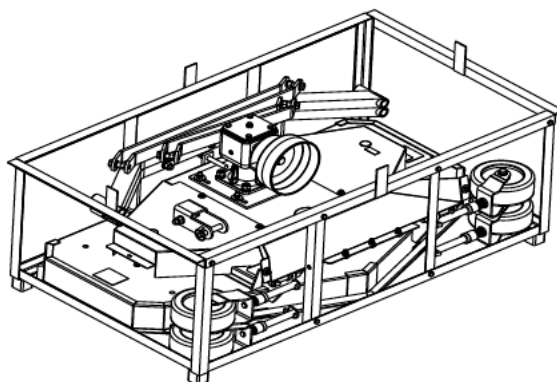


FIGURE 1: Your New Mower As It Is Shipped To You

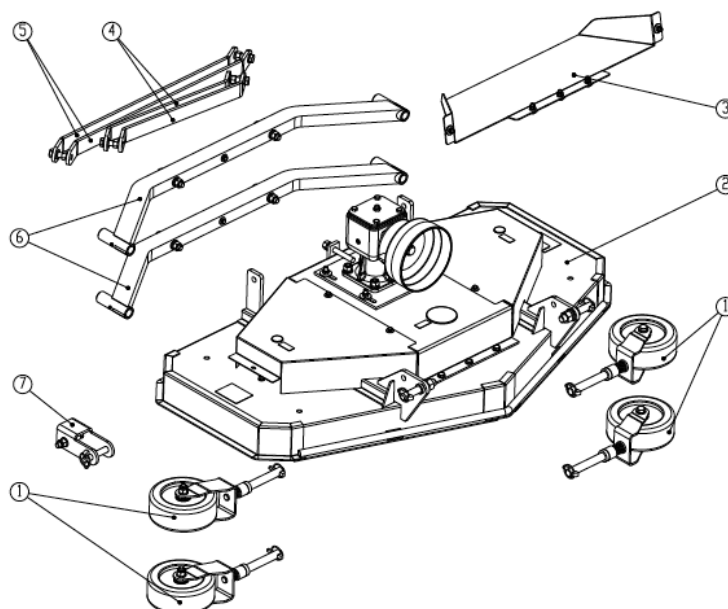


FIGURE 2: The Mower and Accessory In The Crate Packing List

The detailed packing list as the following table.

Item	Description	Qty.	Package Form
1	Wheel bracket assy.	1	Bubble film
2	Mower deck body	1	None
3	Discharge guide and fittings	1	Bubble film
4	Short pivot bar and fittings	2	Bubble film
5	Long pivot bar and fittings	2	Bubble film
6	Wheel frame and fittings	2	Bubble film
7	Upper lift bracket and fittings	1	Bubble film

The detailed description of wheel bracket assembly

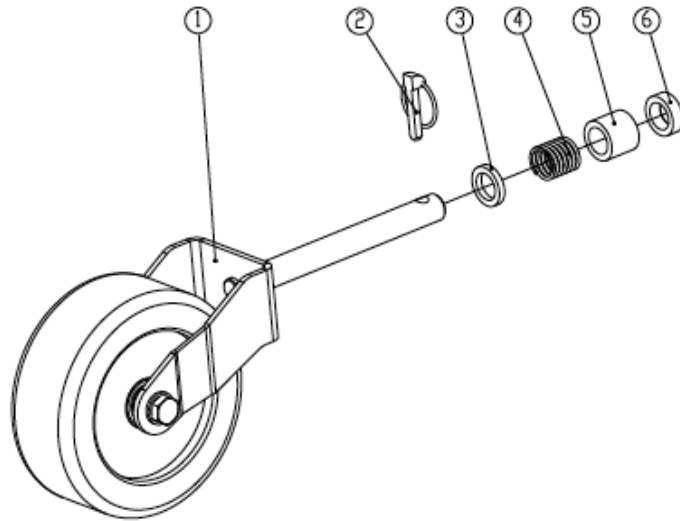


FIGURE 3: Wheel Bracket Assembly

Item	Description	Qty.
1	Wheel bracket sub-assembly	1
2	Safety lock pin	1
3	Spacer H=6	1
4	Damping spring	1
5	Spacer H=32	1
6	Spacer H=12	1

The detailed description of discharge guide and fittings

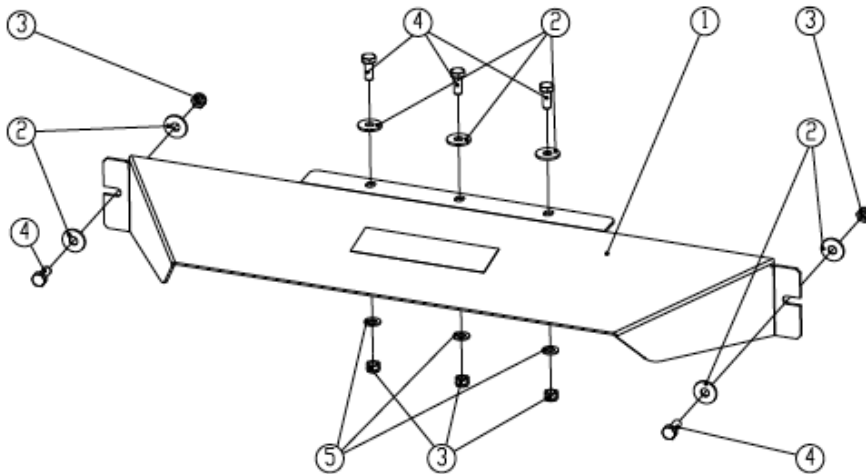


FIGURE 4: Discharge Guide and Fittings

Item	Description	Qty.
1	Discharge guide plate	1
2	Large plain washer 10	7
3	Locknut M10	5
4	Bolt M10x25	5
5	Plain washer 10	3

The detailed description of short pivot bar and fittings

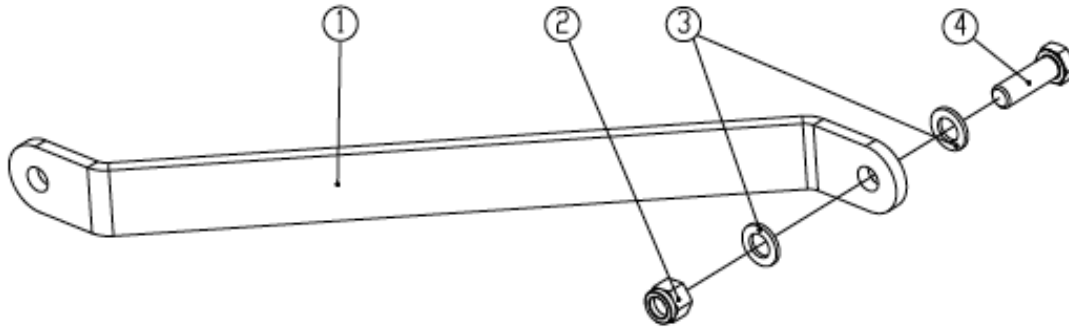


FIGURE 5: Short Pivot Bar and Fittings

Item	Description	Qty.
1	Short pivot bar	1
2	Locknut M16	1
3	Plain washer 16	2
4	Bolt M16x50	1

The detailed description of long pivot bar and fittings

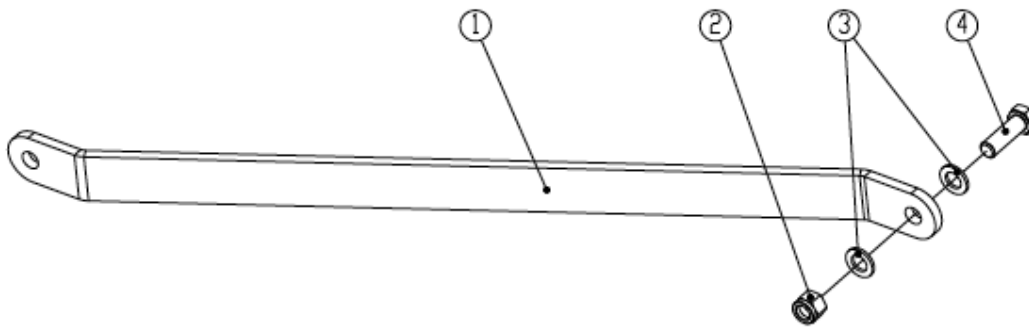


FIGURE 6: Long Pivot Bar and Fittings

Item	Description	Qty.
1	Long pivot bar	1
2	Locknut M16	1
3	Plain washer 16	2
4	Bolt M16x50	1

The detailed description of Wheel Frame and fittings

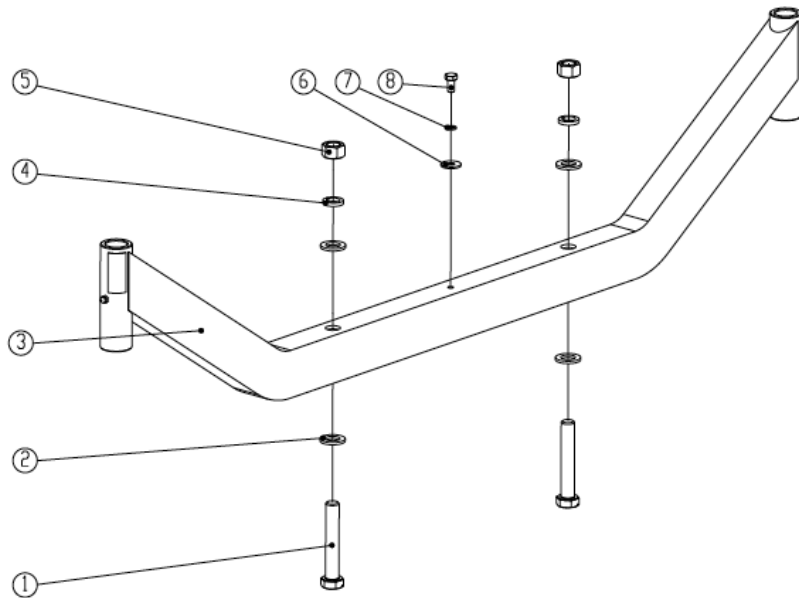


FIGURE 7: Wheel Frame and Fittings

Item	Description	Qty.
1	Bolt M16x95	2
2	Plain washer 16	4
3	Wheel frame	1
4	Spring washer 16	2
5	Nut M16	2
6	Large plain washer 8	1
7	Spring washer 8	1
8	Bolt M8x16	1

The detailed description of Upper Lift Bracket and fittings

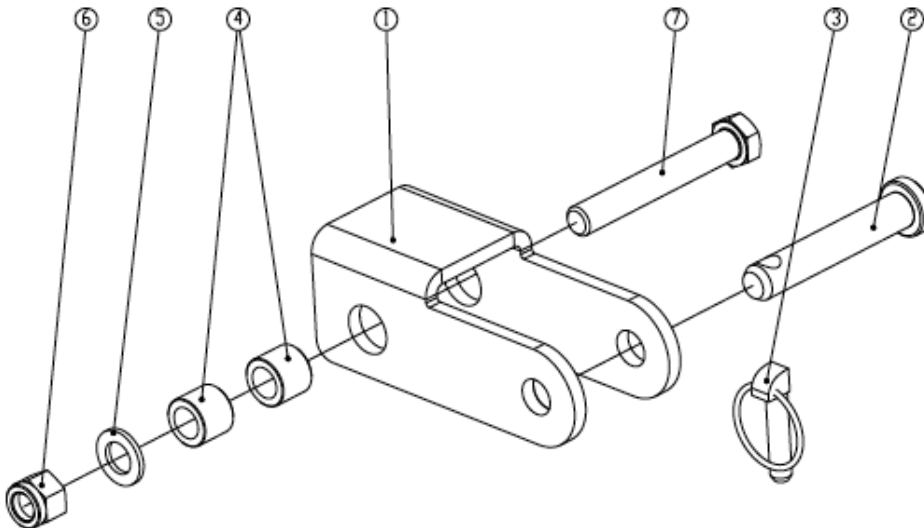


FIGURE 8: Upper Lift Bracket and Fittings

Item	Description	Qty.
1	Upper lift bracket	1
2	Hitch pin -Upper	1
3	Safety lock pin	1
4	Bushing	2
5	Plain washer 16	1
6	Locknut M16	1
7	Bolt M16x110	1

Installation Wizard

The installation wizard will guide you to finish the final assembly of your new mower easily.

1. Tool Required

1/2" Ratchet Wrench with 13mm,16mm,24mm sleeves

17-19,22-24Spanner

Side cutter or Industrial Scissors

Safety Goggles and Gloves Installation

2. Installation

Cut all zip ties and disassemble shipping crate.

Step1: Installing Long, Short Pivot Bar, Upper Lift bracket and Fittings

Remove the packaging of long, short pivot bar, upper lift bracket and fittings

Assemble all above parts on the mower deck body.

Parts:2pcs of long pivot bars, 2pcs of short pivot bars, 1pcs of upper lifting bracket, 4pcs of bolts M16x50, 9pcs of plain washers 16, 5pcs of locknut M16, 1pcs of bolt M16x110and 2pcs of bushings.

Tighten locknut completely.

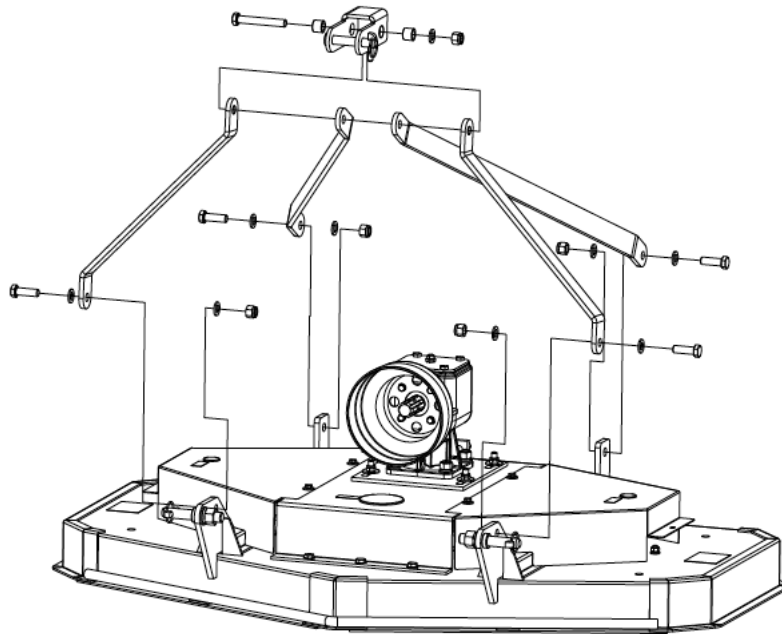


FIGURE 9: Installing Long, Short Pivot Bar, Upper Lift Bracket and Fittings

Step2: Installing Wheel Frame and Fittings

Remove the packaging of wheel frame and fittings.

Assemble 2pcs of wheel frames on the mower deck body.

Parts:4pcs of BoltsM16x95, 8pcs of plain washers16, 4pcs of spring washers 16, 4pcs of nuts M16, 2pcs of bolt M8x16, 2pcs of plain washers 8 and 2pcs of large plain washers 8.

Tighten nut and bolt completely.



WARNING

Raise the mower deck body to ensure that the wheel frame can be installed with enough height.

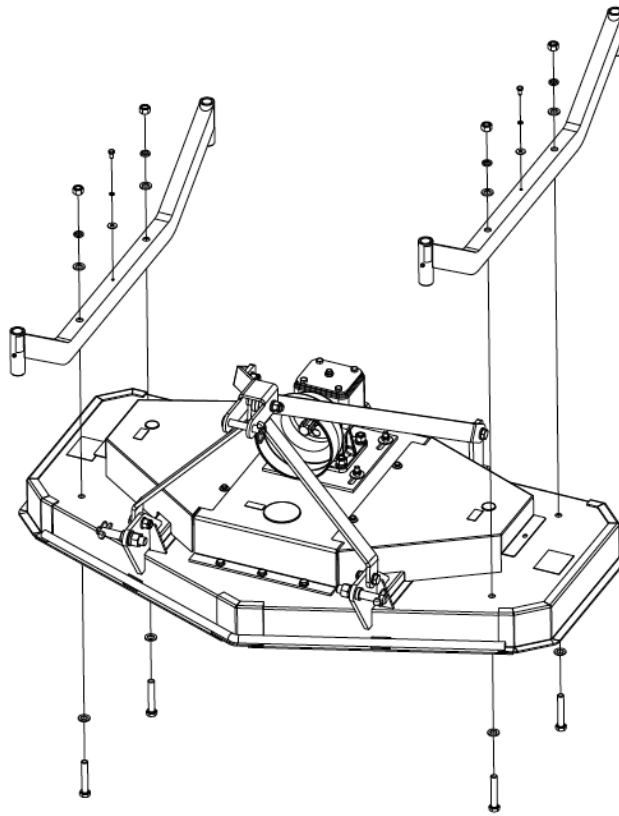


FIGURE 10: Installing Wheel Frame and Fittings

Step3: Installing wheel bracket assembly and Fittings

Remove the packaging of wheel bracket assembly and fittings.

Assemble wheel bracket assemblies on wheel frame as well as spacers.

Through the combination of spacers with different height to get the mowing height you need.

Parts:4pcs of wheel bracket assemblies.

Use safety lock pin to hold wheel bracket.



WARNING

Make sure all wheel height adjustments are same, otherwise it will lead to uneven mowing.

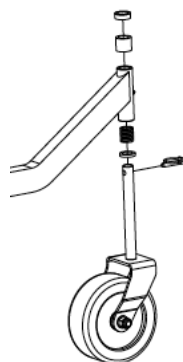


FIGURE 11: Installing wheel Bracket and Fittings

Step4: Installing discharge guide and Fittings

Remove the packaging of discharge guide and fittings.

Assemble discharge guide on mower deck body using included fittings.

Parts:4pcs of boltsM10x25,3pcsofplainwashers10,7pcsoflargeplainwasher10and5pcsoflocknutsM10.

Tighten all locknuts and bolts completely.

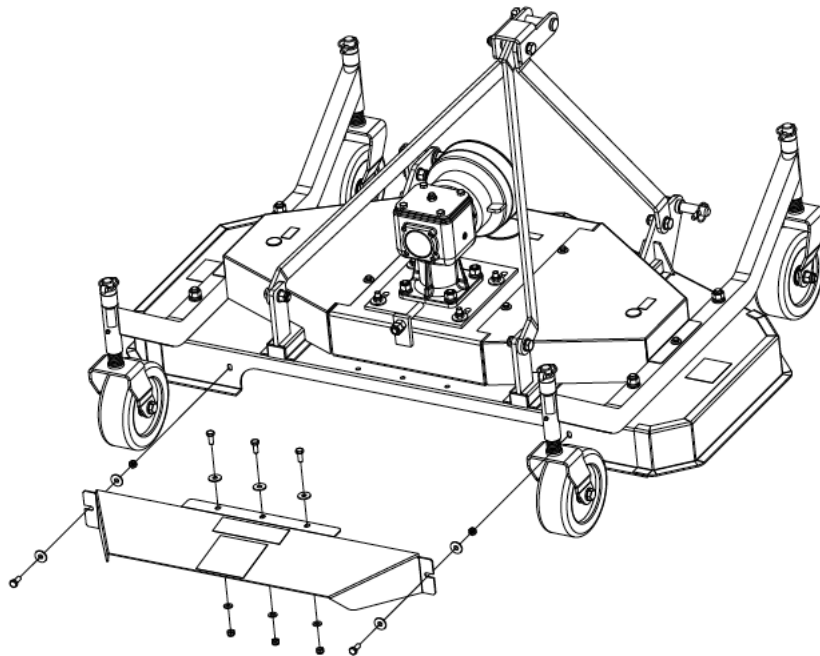


FIGURE 12: Installing Discharge Guide and Fittings

Tractor Hook-Up

1. Be certain that tractor draw bar will not interfere. Move draw bar ahead or remove if required. Draw bar should also be checked for clearance when unit is being raised for the first time.
2. Align lower link arms of tractor to hitch clevises on mower. Insert lower hitch pins into lower ball swivels and attach link pins.
3. Attach tractor top link to upper floating hitch on mower with pin supplied. Secure with lock pin.
4. Adjust tractor top link in or out to place upper hitch pin vertically above or slightly behind lower hitch pins to allow mower flotation. The mower should be run with the back 15 degrees lower than the front.

Driveline Installation

1. Slide driveline end with extended safety cone over spline shaft of gearbox and secure with attaching device.
2. Slide driveline over tractor's spline PTO shaft and secure with locking device of driveline.
3. Driveline should now be moved back and forth to ensure that it is secure on the PTO shaft of the tractor and mower gearbox.
4. Attach chain from the driveline shield to one of the upper hitch braces to ensure that the shield does not rotate.
5. Should driveline require shortening:
 - a. Hold the half-shafts next to each other in the shortest working position and mark them.
 - b. Shorten inner and outer guard tubes equally.
 - c. Shorten inner and outer sliding profiles by the same length as the guard tubes.
 - d. Proper overlap is a minimum of one-half the length of each tube, with both tubes being of equal length.
 - e. Round off all sharp edges and remove burrs. Grease sliding profiles.



CAUTION

Tractor PTO shield and all mower guards must be always in place during operation!

Section 2: Operating Instructions

Transporting

NOTE: Always disengage PTO before raising mower to transport position.

1. When raising the mower to transport position, be sure that driveline does not contact tractor or mower. Adjust and set the tractor's 3-point hitch lift height so that the driveline does not contact mower deck in the fully raised position.
2. Be sure to reduce tractor ground speed when turning, leaving enough clearance so that the mower does not contact obstacles such as buildings, trees or fences.
3. Select a safe ground travel speed when transporting from one area to another. When traveling on roadways, transport in such a way that faster moving vehicles may pass safely.
4. When traveling over rough or hilly terrain, shift tractor to a lower gear.



CAUTION

When traveling on public roads, whether at night or during the day, use accessory lights and devices for adequate warning to operators of other vehicles. Comply with all Federal, State, and local laws.

Mowing Instructions

1. Clear area to be mowed of objects and debris that might be picked up and thrown by the mower blades.
2. Grass is best cut when it is dry. Mowing wet grass can cause plugging resulting in grass clumps behind the mower.
3. Grass should be mowed frequently as shorter clippings deteriorate faster.
4. If mowing extremely tall grass, it is best to raise cutting height and mow the area, then lower cutting height and mow a second time at the desired height.

Operating Instructions

Proper servicing and adjustments are the key to the long life of any machine. With careful and systematic inspection of the mower, costly maintenance, time and repair can be avoided.

Before beginning to mow, the following inspection should be performed:

1. Check oil level in gearbox.
2. Check that all plugs in gearbox have been replaced and tightened properly.
3. Be sure all mower knives, bolts and nuts are tight.
4. Be certain all guards and shields are in place and secure.
5. Grease driveline shaft and all other grease fittings.
6. Clear area to be mowed of rocks, branches and other foreign objects.
7. Lower mower to ground. Set tractor throttle at approximately 1/4 open. Engage PTO to start blades rotating.
8. Operate with 540 rpm PTO tractor.
9. At first begin mowing at a slow forward speed and shift up until the desired speed is achieved - maintaining 540 PTO rpm.
10. Mower knives will cut better at a faster blade speed than at reduced throttle.
11. After mowing the first 50 feet, stop and check to see that the mower is adjusted properly.
12. Do not make sharp turns or attempt to back up while mower is on the ground.
13. Do not engage PTO with mower in the fully raised position. Do not engage PTO at full throttle.

Section 3: Adjustments

Leveling the Mower

NOTE: Tractor and mower should be on level ground.

Leveling can be adjusted at the tractor's 3-point arms and center link.

Cutting Height Adjustment

The machine's cutting height depends upon the position of the rear roller.

1. Remove the bolts that fix the roller on both sides.
2. Lift or lower both sides of roller in equal measurements.
3. Replace bolts and re-tighten.

3-Point Hitch Adjustments

The 3-point hitch system on this mower has been designed for front to back flotation when mowing on uneven terrain. Adjust tractor's top center link to place the upper hitch pin vertically above or slightly behind the lower hitch pins. The mower should be run with the back 15 degrees lower than the front.

The hitch can also be adjusted from side to side by turning the adjustment handle. Turn handle until you have achieved your desired location.



CAUTION

Engage parking brake, shut off tractor, remove key and disengage PTO before making any height adjustments!

Belt Tension



CAUTION

Belt drive system under spring tension; use care to avoid bodily harm!

The Belt tension should be checked after the first 20 hours of use. And then every 40 hours of use.

1. Tension on the belt can be adjusted with the belt tension bolt. Turn the bolt until desired tension is achieved. When the belt has the correct tension the gearbox should be adjusted so that the gearbox extension is running straight (parallel) with the flail mower. Loosen bolts at the bottom of the gearbox and move gearbox until gearbox extension is running straight.
2. Excessive tension on the belt may lead to premature failure of belt and drive components.



CAUTION

Excessive tension on the belt may lead to premature failure of belt and drive components. Excessive tension on the belt may also lead to a safety hazard to the operator or bystanders.

Section 4: Maintenance and Lubrication

Maintenance

Proper servicing and adjustment is the key to the long life of any farm implement. With careful and systematic inspection, you can avoid costly maintenance, time and repair.



CAUTION

For safety reasons, each maintenance operation must be performed with tractor PTO disengaged, mower lowered completely to ground and tractor engine shut off with ignition key removed.

1. After using the mower for several hours, check all bolts to be sure they are tight and check drive belt tension.
2. Replace any worn, damaged or illegible safety decals by obtaining new decals from dealer.

Knife Replacement

IMPORTANT: Make sure that the knife is the same length as the others on the mower. This will keep the rotor rotation balanced.

1. Remove bolt and nut.
2. Remove old knife.
3. Install new knife and existing bolt.
4. Secure with nut.

V-Belt Installation



CAUTION

Belt drive system under spring tension; use care to avoid bodily harm!

1. Remove belt guard fender and belt cover.

2. Disengage belt tension by loosening belt tension bolt until belt can be removed.
3. With tension relieved from belt remove old belt from pulleys.
4. Tighten belt tension bolt.
5. Reinstall belt guard and belt guard fender.

Storage

At the end of the working season or when the mower will not be used for a long period, it is good practice to clean off any dirt or grease that may have accumulated on the mower and any of moving parts.

1. Clean as necessary.
2. Check knives for wear and replace if necessary.
3. Inspect mower for loose, damaged or worn parts and adjust or replace as needed.
4. Store unit inside if possible for longer life.
5. Repaint parts where paint is worn or scratched to prevent rust.
6. Replace all damaged or missing decals.

Lubrication

Driveline Shaft U-Joints

Type of Lubrication: Multi-purpose Grease



Roller Bearing (Both Ends)

Type of Lubrication: Multi-purpose Greas



Cutter Rotor Bearing (Both Ends)

Type of Lubrication: Multi-purpose Grease



Gearbox

Type of Lubrication: SAE 90W Gear Lube



Check oil level in gearbox by removing the plug located on the right-hand side. Oil should be level with bottom of plug hole. Add oil if necessary, by removing top fill plug and side plug. Add oil until it flows from side plug hole.

Do not overfill!

IMPORTANT: Mower should be level when checking oil in gearbox!

Driveline Profiles

Type of Lubrication: Multi-purpose Grease



Section 5: Specifications & Capacities

Model	TMG-TFN48	TMG-TFN60	TMG-TFN72
Cutting width (W1)	48"(1200mm)	60"(1500mm)	72"(1800mm)
Dimensions (L*W*H)	49"x61"x29"	55"x61"x29"	73"x61"x29"
Cutting Height	1"-4"(25mm-100mm)		
Wheel Sizes	210x80mm		
No. of Blades	3		
Blade Material	65Mn		
CAT Type	CAT 1		
PTO Speed	540rpm		
Power Required	18-30HP	25-40HP	30-50HP
Product Weight	425LBS	458LBS	500LBS
Shipping Weight (G.W.)	525LBS	565LBS	630LBS

Section 6: Troubleshooting

Problem	Solution
Do not try to clean rear discharge area when mower is running. Bodily harm may occur!	
Belt slipping	Unplug and clean mower deck.
	Remove belt guard shields and clean sheaves.
	Replace belt.
	Mow at full throttle (540 PTO rpm), check PTO speed and tractor engine.
Patches of uncut grass	Shift transmission to a lower gear.
	Tighten belts.
	Replace missing knives.
	Replace knives.
Excessive vibration	Replace drive belt.
	Replace pulleys or align.
	Remove belt guard shields & clean debris from belt area & sheaves.
Gearbox noisy	Check lubricant level.
Knives scalping grass	Raise cutting height by adjusting roller.
	Change mowing pattern.
	Reduce speed turns.
Uneven cut	Shift to a lower gear.
	Level mower.
	Replace missing knives.
Tractor loaded down by mower	Mow at full throttle (540 PTO rpm).
	Shift to a lower gear.
	Clean mower.

Section 7: Appendix

Warranty

TMG warrants to the original purchaser that this product will be free from defects in material and workmanship beginning on the date of purchase by the end user according to the following schedule when used as intended and under normal service and conditions for personal use.

Overall Unit and Driveline: One-year.

Blades and Belts: Considered wear items.

This warranty is limited to the replacement of any defective part by manufacturer and the installation by the dealer of any such replacement part, and does not cover common wear items such as blades, belts, tines, etc. TMG reserves the right to inspect any equipment or parts which are claimed to have been defective in material or workmanship.

This warranty does not apply to any part or product which in TMG's judgment shall have been misused or damaged by accident or lack of normal maintenance or care, or which has been repaired or altered in a way which adversely affects its performance or reliability, or which has been used for a purpose for which the product not designed. Misuse also specifically includes failure to properly maintain oil levels, grease points, and driveline shafts.

Claims under this warranty must be made to the dealer which originally sold the product and all warranty adjustments must be made through such dealer. TMG reserves the right to make changes in materials or design of the product at any time without notices.

This warranty shall not be interpreted to render TMG liable for damages of any kind, direct, consequential, or contingent to property. Furthermore, TMG shall not be liable for damages resulting from any cause beyond its reasonable control. This warranty does not extend to loss of crops, any expense or loss for labor, supplies, rental machinery or for any other reason. No other warranty of any kind whatsoever, express or implied, is made with respect to this sale; and all implied warranties of merchantability and fitness for a particular purpose which exceed the obligations set forth in this written warranty are hereby disclaimed and excluded from this sale.

Bolt Torque

The tables shown below give correct torque values for various bolts and cap screws. Tighten all bolts to the torques specified unless otherwise noted. Check tightness of bolts periodically, using bolt torque chart as a guide. Replace hardware with the same strength bolt.

ENGLISH TORQUE SPECIFICATIONS

Bolt Diameter	Bolt Torque					
	SAE 2		SAE 5		SAE 8	
	N.m	lb-ft	N.m	lb-ft	N.m	lb-ft
1/4"	8	6	12	9	17	12
5/16"	13	10	25	19	36	27
3/8"	27	20	45	33	63	45
7/16"	41	30	72	53	100	75
1/2"	61	45	110	80	155	115
9/16"	95	60	155	115	200	165
5/8"	128	95	215	160	305	220
3/4"	225	165	390	290	540	400
7/8"	230	170	570	420	880	650

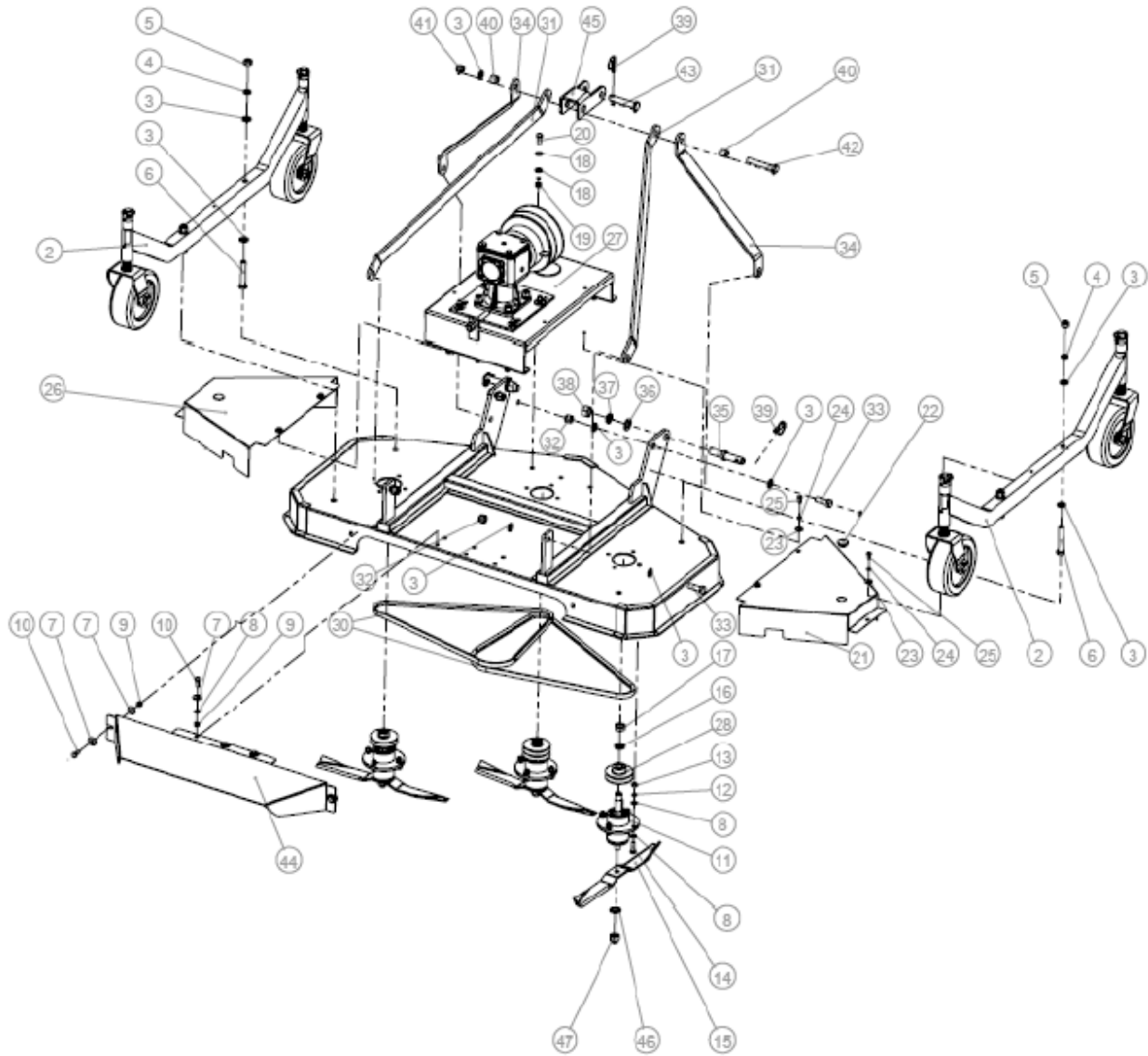
METRIC TORQUE SPECIFICATIONS

Bolt Diameter	Bolt Torque			
	8.8		10.9	
	N.m	lb-ft	N.m	lb-ft
M3	0.5	0.4	1.8	1.3
M4	3	2.2	4.5	3.3
M5	6	4	9	7
M6	10	7	15	11
M8	25	18	35	26
M10	50	37	70	52
M12	90	66	125	92
M14	140	103	200	148
M16	225	166	310	229
M20	435	321	610	450
M24	750	553	1050	744
M30	1495	1103	2100	1550
M36	2600	1917	3675	2710

Torque figures indicated above are valid for non-greased or non-oiled threads and heads otherwise specified. Therefore, do not grease or oil bolts or cap screws unless otherwise specified in this manual. When using locking elements, increase torque values by 5%.

Part Breakdown List

TMG-TFN48/TMG-TFN60/TMG-TFN72 Part Breakdown



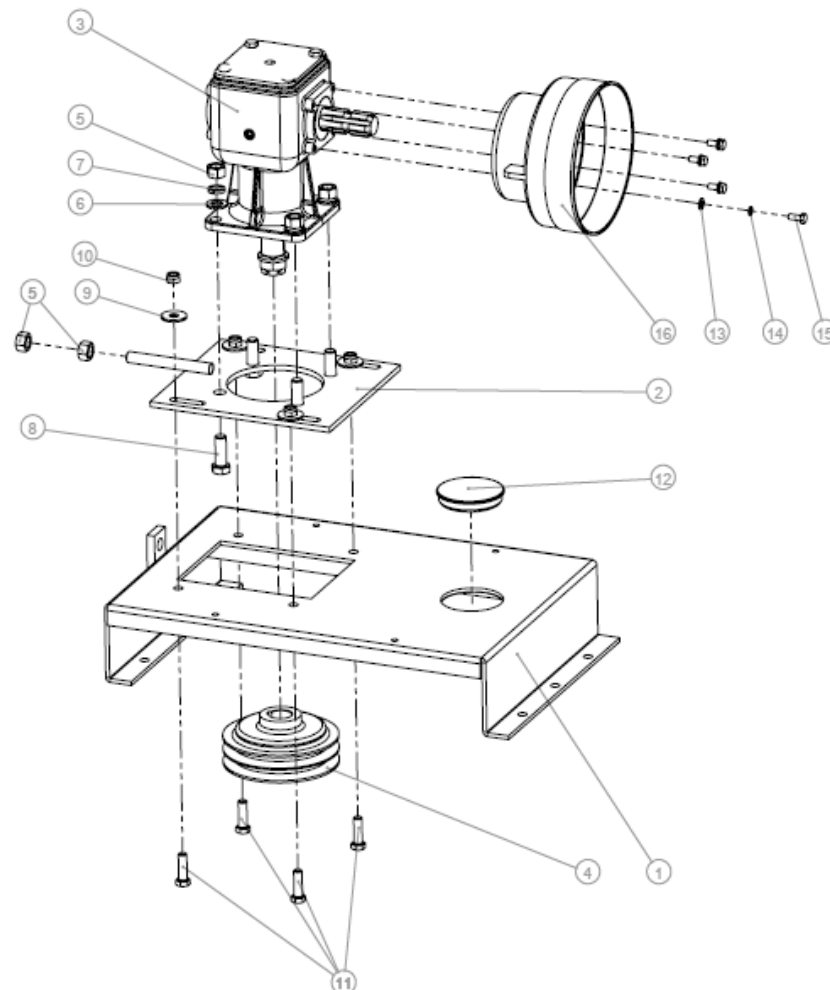
TMG-TFN48/TMG-TFN60/TMG-TFN72 Part Breakdown List

PART NO.	REF. NO.	PART DESCRIPTION	QTY.	REMARK
1	4030200024	Mower deck weldment	1	TMG-TFN48
	4030200025		1	TMG-TFN60
	4030200026		1	TMG-TFN72
2	FM120.00.00.000-1	Wheel beam assembly	2	TMG-TFN48
	ATFM150.00.00.000-2		2	TMG-TFN60, TMG-TFN72
3	7040100008	Plain washer 16	17	
4	7040400008	Spring washer 16	4	
5	7030100008	Nut M16	4	
6	7010200011	Bolt M16x95	4	
7	7040300005	Large plain washer 10	7	

8	7040100005	Plain washer 10	27	
9	7030500017	Locknut M10	5	
10	7010100013	Bolt M10×25	5	
11	ATFM150.00.00.000-4	Spindle assembly	3	
12	7040400005	Spring washer 10	12	
13	7030100005	Nut M10	12	
14	7010100019	Bolt M10×35	12	
15	4290200009	Blade	3	TMG-TFN48
	4290200010		3	TMG-TFN60
	4290200011		3	TMG-TFN72
16	7040400011	Spring washer 24	3	
17	7030400003	Hex. Nut M24x2 - L thread	3	
18	7040100006	Plain washer 12×2.5	12	
19	7030500006	Locknut M12	6	
20	7010100004	Bolt M12×30	6	
21	4010000139	Pulley cover -L	1	TMG-TFN48
	4010000143		1	TMG-TFN60
	4010000147		1	TMG-TFN72
22	4100200021	Rubber plug φ30	2	
23	7040300004	Large plain washer 8	6	
24	7040400004	Plain washer 8	6	
25	7010100017	Bolt M8×16	6	
26	4010000138	Pulley cover -R	1	TMG-TFN48
	4010000142		1	TMG-TFN60
	4010000146		1	TMG-TFN72
27	FM150.00.00.000-1	Gearbox drive assembly	1	
28	4050000015	Single sheave pulley	2	
29	4050000014	Driven pulley	1	
30	4150100013	Belt B1448Li (1488Ld)	2	
	4150100012	Belt B1626Li (1666Ld)	2	
	4150100015	Belt B1829Li (1869Ld)	2	
31	4010000137	Long pivot bar	2	TMG-TFN48
	4010000140		2	TMG-TFN60
	4010000145		2	TMG-TFN72
32	7030500008	Locknut M16	4	
33	7010100034	Bolt M16x50	4	

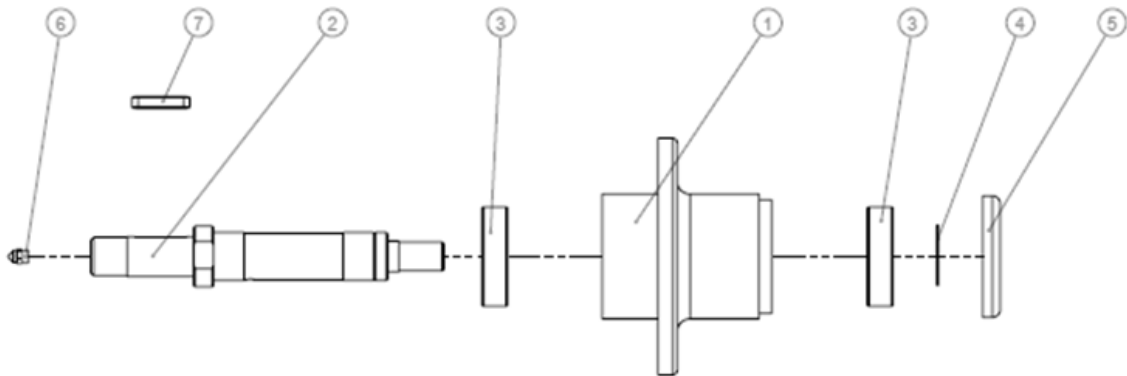
34	4010000141	Short pivot bar	2	
35	4020000001	Hitch pin - lower	2	
36	7040200010	Plain washer 22	2	
37	7040400010	Spring washer 22	2	
38	7030100010	Nut M22	2	
39	4300100004	Safety lock pin $\phi 11 \times 50$	3	
40	4020000170	Driven pulley sleeve	2	
41	7030500020	Locknut M16	1	
42	7010200010	Bolt M16x110	1	
43	4020000017	Hitch pin - upper	1	
44	4010000076	Discharge guide	1	TMG-TFN48
	4010000070		1	TMG-TFN60
	4010000148		1	TMG-TFN72
45	4010000144	Hitch connecting bracket	1	
46	7040100013	Plain washer 18x34x3	3	
47	7030800002	Locknut M18x1.5	3	

TMG-TFN48/TMG-TFN60/TMG-TFN72 Gearbox Assembly Breakdown



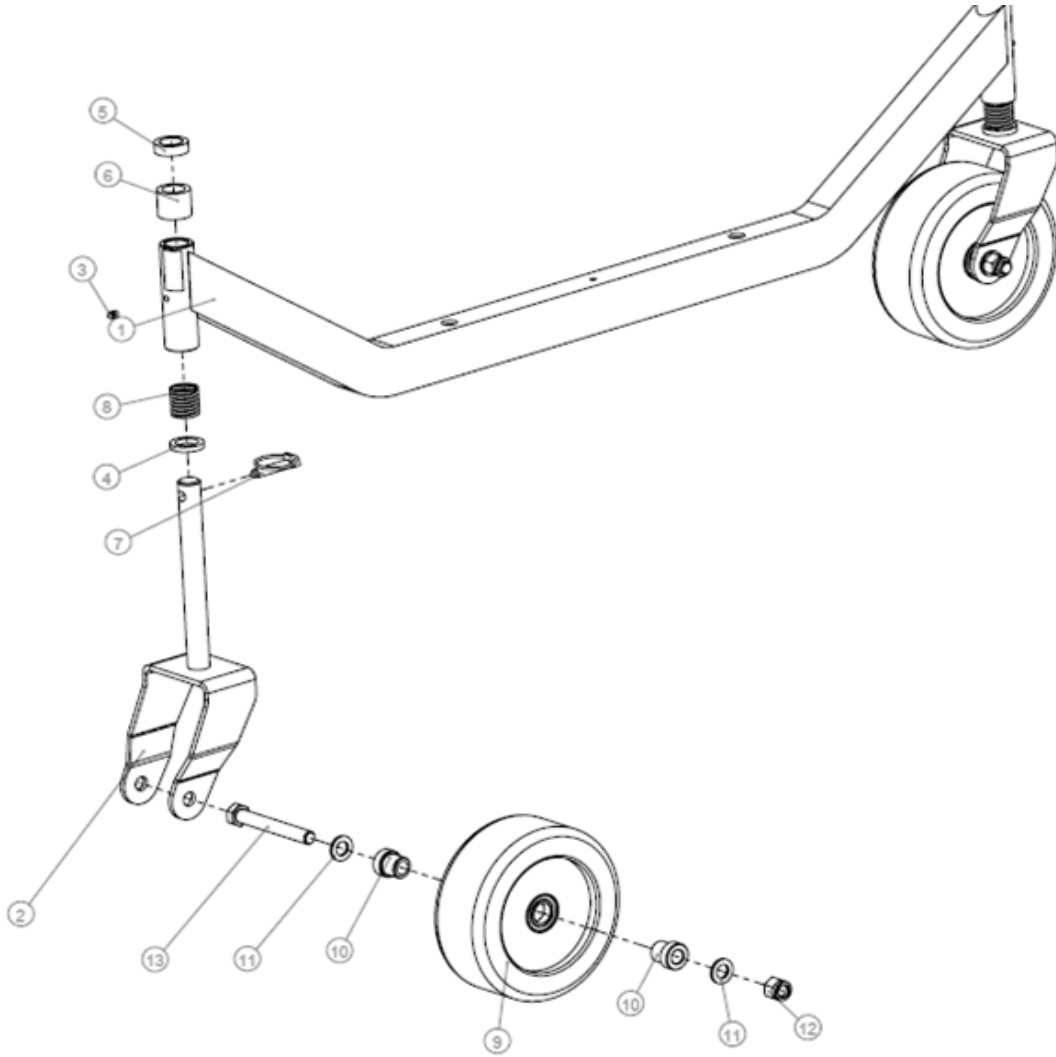
PART NO.	REF. NO.	PART DESCRIPTION	QTY.	REMARK
1A	4030200027	Gearbox mount bracket	1	
2A	4030100251	Gearbox base plate	1	
3A	4040100015	Gearbox 20Hp	1	
4A	4050000016	Driving pulley	1	
5A	7030100008	Hex nut M16	6	
6A	7040200008	Plain washer 16	4	
7A	7040800008	Spring washer 16	4	
8A	7010100016	Bolt M16x45	4	
9A	7040300006	Large plain washer 12	4	
10A	7030500006	Locknut M12	4	
11A	7010100008	Bolt M12x40	4	
12A	4100200027	Rubber plug φ 91.3	1	
13A	7040100004	Plain washer 8	4	
14A	7040400004	Spring washer 8	4	
15A	7010100006	Bolt M8x20	4	
16A	4100200006	PTO dust cover	1	

TMG-TFN48/TMG-TFN60/TMG-TFN72 Spindle Assembly Breakdown



PART NO.	REF. NO.	PART DESCRIPTION	QTY.	REMARK
1B	4020000087	Bearing seat	1	
2B	4020000088	Spindle	1	
3B	7060100007	Bearing 6206 RZ	2	
4B	7090100003	Circlip for shaft φ 30	1	
5B	4010000071	Protective cover	1	
6B	4300400002	Pressure lubricator M8x1	1	
7B	7080100004	Flat key 8x36	1	

TMG-TFN48/TMG-TFN60/TMG-TFN72 Wheel beam Assembly Breakdown



PART NO.	REF. NO.	PART DESCRIPTION	QTY.	REMARK
1C	4030200004	Wheel beam weldment	1	TMG-TFN60, TMG-TFN72
	4030200028		1	TMG-TFN48
2C	4030200005	Yoke weldment	2	
3C	4300400002	Pressure lubricator M8x1	2	
4C	4020000081	Spacer H=6	2	
5C	4020000082	Spacer H=12	2	
6C	4020000083	Spacer H=32	2	
7C	4300100004	Safety lock pin \varnothing 11x50	2	
8C	4320100002	Damping spring	2	
9C	4100700001	Wheel assy	2	
10C	4020000084	Bushing	4	
11C	7040100008	Plain washer 16	4	
12C	7030500008	Locknut M16	2	
13C	7010200029	Bolt M16x120	2	