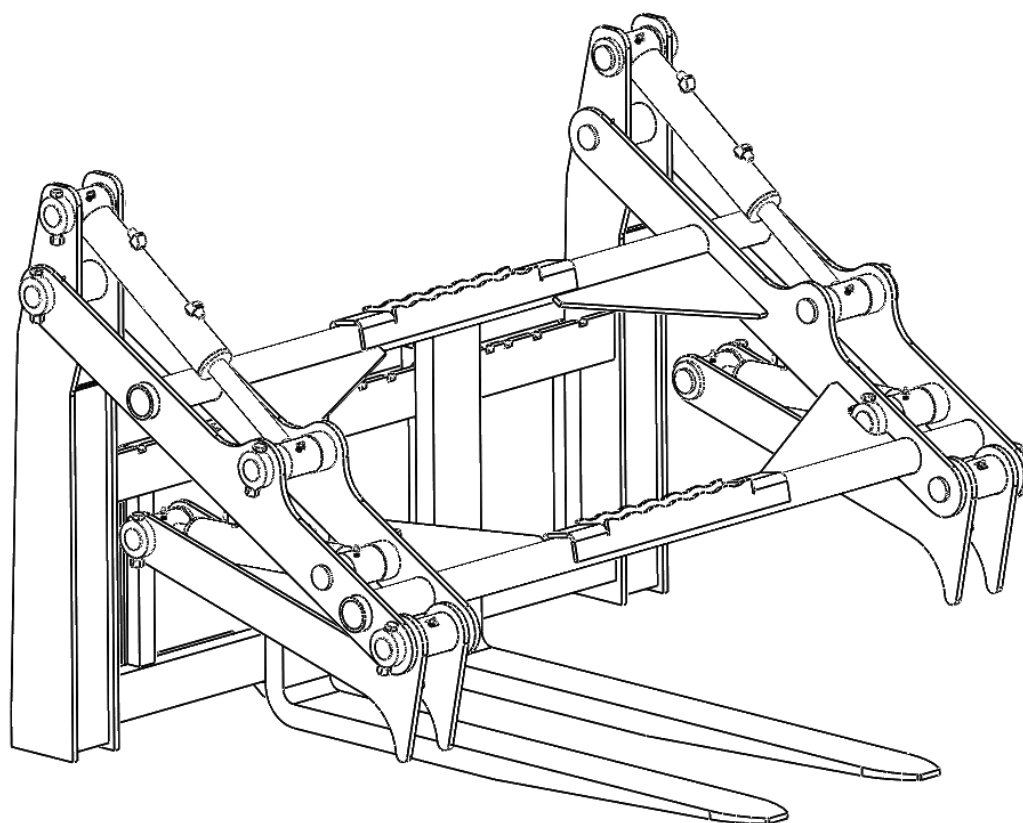


60" SKID STEER PIPE PALLET FORK GRAPPLE



⚠ WARNING



- Please read and understand the product manual completely before assembly
 - Check against the parts list to make sure all parts are received
 - Wear proper safety goggles or other protective gears while in assembly
- Do not return the product to dealer. They are not equipped to handle your requests.

Missing parts or questions on assembly?

Please call: 1-877-761-2819 or email: cs@tmgindustrial.com

SAFETY

DO NOT use or perform maintenance on this machine until this manual has been read and understood. In addition, read the Operation and Maintenance Manual(s) pertaining to the attachment and the attachment carrier (“Loader”).

The user is responsible for inspecting the machine daily, and for having parts repaired or replaced when continued use of the machine would cause damage, excessive wear to other parts or make the machine unsafe for continued operation.

If an operating procedure, tool device, maintenance or work method not specifically recommended is used, you must satisfy yourself that it is safe for you and others. You must also ensure that the attachment will not be damaged or made unsafe by the procedures you choose.

TMG INDUSTRIAL cannot anticipate every possible circumstance that might involve potential hazard. The safety messages found in this manual and on the machine are therefore not all inclusive.

Throughout this manual, reference may be made to the left hand (LH) and right hand (RH) side. These terms are used as viewed from the operator’s seat facing front.

The signal words CAUTION, WARNING, or DANGER are used to indicate hazards.



DANGER

Indicates a potentially hazardous situation which, if not avoided, will result in death or serious injury.



WARNING

Indicates a potentially hazardous situation which, if not avoided, could result in death or serious injury.



CAUTION

Indicates a potentially hazardous situation which, if not avoided, may result in minor or moderate injury.

The word **IMPORTANT** is used in the text when immediate damage will occur due to improper technique or operation.

The word **NOTE** is used to convey information that is out of context with the manual text; special information such as specifications, techniques, reference information, and other information of a supplementary nature.

Improper operation can cause serious injury or death.

Pre-operation

- This machine is designed for handling construction and natural materials. NEVER use this machine for any other purpose.
- Read the operator's manual for the "Skid Steer Loader." NEVER allow untrained people to operate.
- Operating instructions must be given to everyone before operating this attachment and at least once a year thereafter in accordance with OSHA regulations.
- NEVER exceed the maximum recommended input power or speed specifications for the attachment. Over-powering or over-speeding the attachment may cause personal injury and/or machine damage.
- Keep all shields, guards, and covers in place.
- Do not modify equipment or add attachments that are not approved by TMG INDUSTRIAL.
- Use adequate safety warning lights and devices as required by local regulations. Obey all local laws and regulations regarding machine operation on public property.

Operation

- Hydraulic connections may be hot after use. Use gloves if connecting or disconnecting after use.
- Check and be sure all operating controls are in neutral before starting the engine.
- Keep people away from loader and attachment when in use. This attachment lifts objects and has moving parts. NEVER lift load directly over people – load could fall.
- To avoid electric shock or electrocution, NEVER operate the attachment near overhead power lines.
- NEVER operate near embankments or terrain that is so steep that rollover could occur.
- Always stay in the operator position when using the attachment.
- Before leaving the operators position, disengage hydraulic drive, lower the attachment to rest flat on the ground, stop engine, set park brake, and wait for all motion to stop.
- NEVER place hands near moving parts or clear debris while engine is running.
- NEVER lift people.

Avoid High Pressure Fluids Hazard

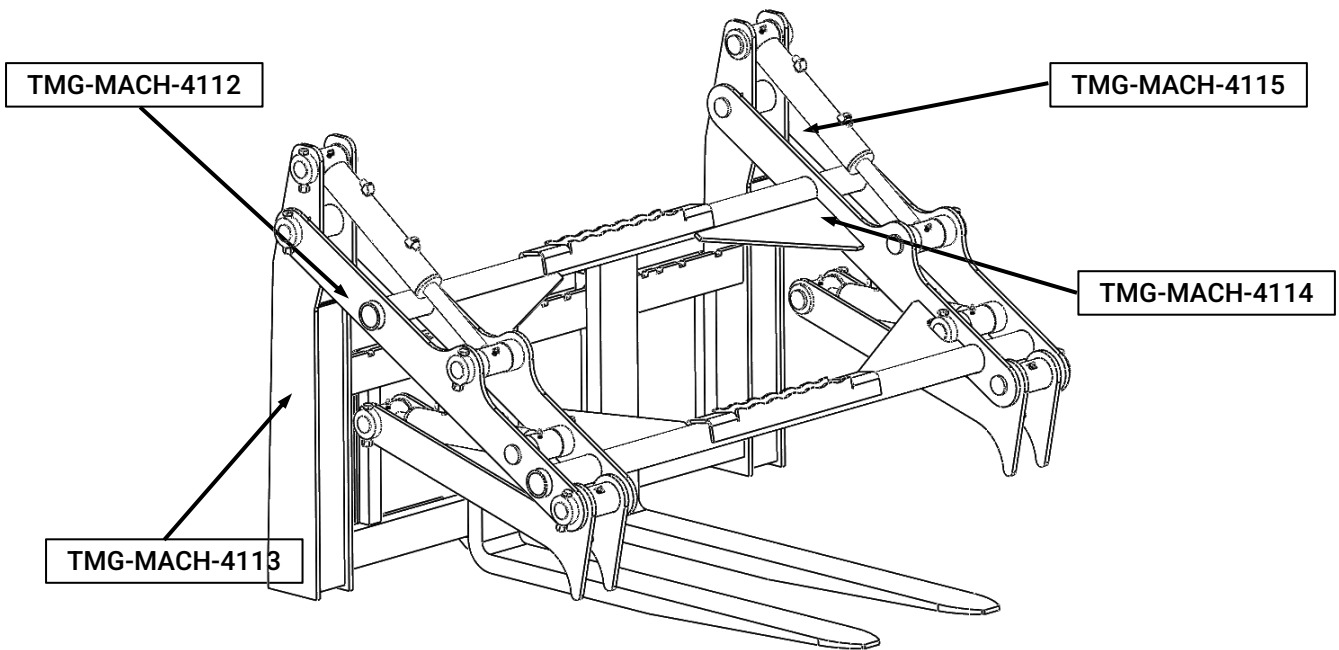
- Escaping fluid under pressure can penetrate the skin causing serious injury.
- Avoid the hazard by relieving the pressure before disconnecting hydraulic lines.
- Use a piece of paper or cardboard, NOT BODY PARTS, to check for suspected leaks. Wear protective gloves and safety glasses or goggles when servicing or performing maintenance on hydraulic systems.
- If an accident occurs, see a doctor immediately. Any fluid injected into the skin must be surgically removed within a few hours or gangrene may result.



Maintenance

- NEVER make adjustments, lubricate, clean, or perform any service on the machine while it is in operation.
- Make sure the attachment is serviced on a daily basis. Improper maintenance can cause serious injury or death in addition to damage to the attachment and/or your equipment.

SAFETY DECAL LOCATIONS



⚠ WARNING!

PINCH POINT

- Always keep your hands clear of the grapple when the skid loader hydraulic system is operational
- Failure to follow these instructions could result in injury or death

TMG-MACH-4112

⚠ WARNING!

CRUSH HAZARD

- Always stay clear of the grapple jaw
- Never inspect the grapple with the skid loader running or with the jaw open

TMG-MACH-4114

⚠ WARNING!

- NEVER use hands to check for oil leaks
- ALWAYS relieve pressure before disconnecting hoses
- Read and understand all operating and safety instructions in owners manual
- Attachment Weight and Load **MUST NOT** exceed **Operating Capacity of Skid Loader** (refer to skid loader manual for capacity)
- Attachment must be securely latched to skid loader
- Check for loose or broken parts before operating, repair as needed
- Stay back 50 feet during operation
- ALWAYS follow skid loader safety and operating instructions
- Failure to follow these instructions could result in injury or death

TMG-MACH-4113

⚠ WARNING!

TINE RATING CHART			
Thickness	Length	Width	Capacity
1-3/4"	48"	4-3/4"	6200 lb
1-3/4"	60"	4-3/4"	6200 lb

- Attachment weight and load **MUST NOT** exceed operating capacity of loader (refer to loader manual for capacity)
- Tines **MUST** be latched in frame notches
- This attachment is designed for lifting **ONLY, NOT** prying or digging
- Attachment must be securely latched to the loader
- Inspect for loose or broken parts before operating, repair as needed
- ALWAYS stay back 50 feet during operation
- ALWAYS follow loader safety and operating instructions
- Failure to follow these instructions may result in injury or death

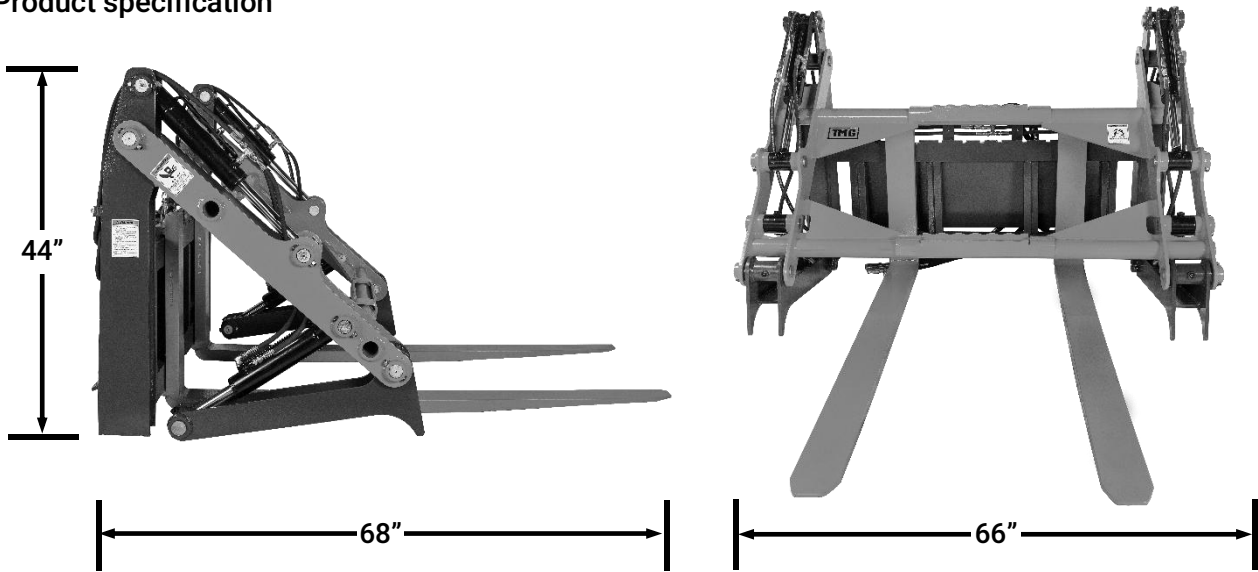
TMG-MACH-4115

Safety Decals Locations:

The locations of the safety decals are shown. If these decals are missing, damaged, or painted over they must be replaced. Call TMGINDHSTRAL (877-761-2819) for replacement decals

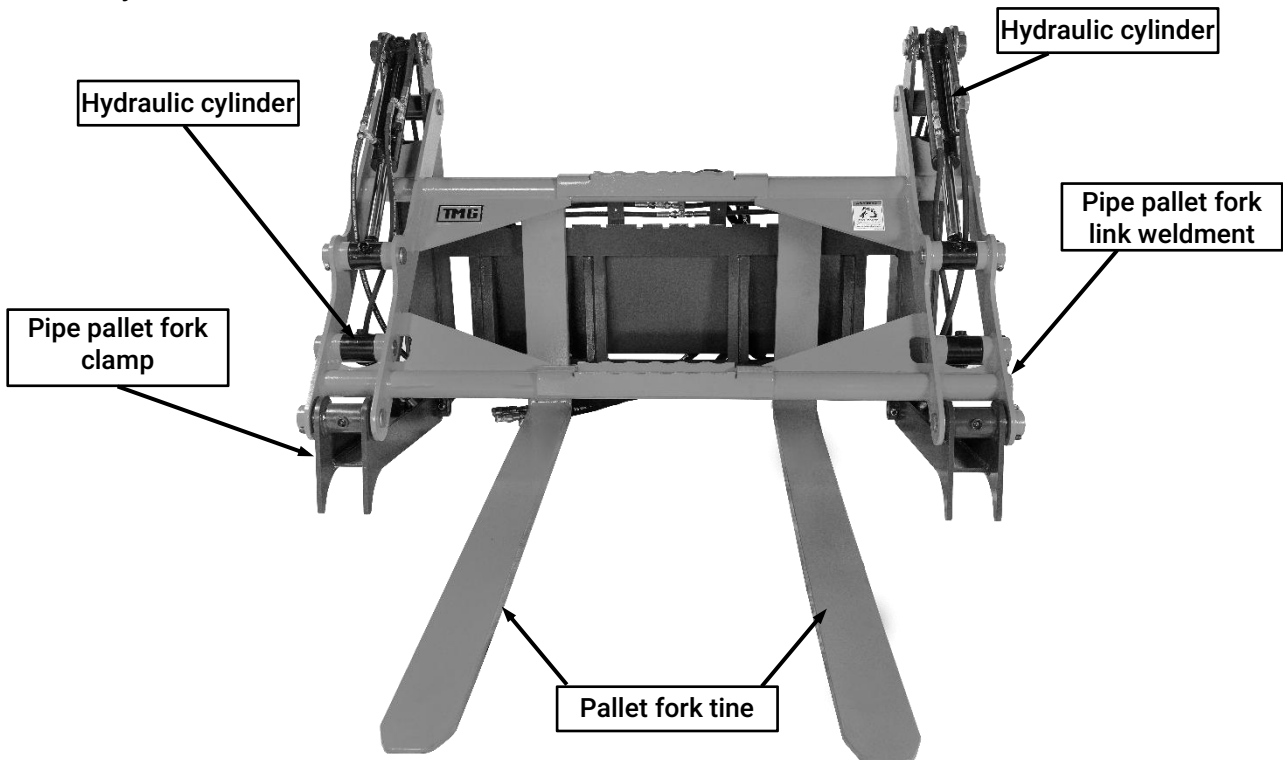
GENERAL SPECIFICATIONS

1. Product specification



Model #	TMG-SPG60
Fork length	60"
Fork Load Rating (pair @ 24" load center)	6200 lb
Recommended loader capacity	1500 lb
Fork space	9" – 49"
Maximum pipe diameter	27"
Hydraulic working pressure	1450-2610 psi
Hydraulic flow	10-23GPM

2. Assembly View



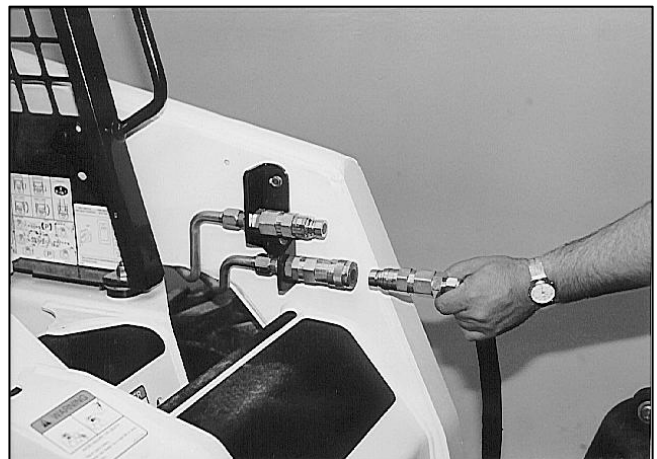
USER'S MOUNTING INSTRUCTIONS

After the initial set-up assembly is completed use the following procedure to mount the attachment to the loader for user operation.

WARNING

Coupler wedges or pins must extend through holes in attachment. Levers must be fully down and locked. Failure to secure wedges or pins can allow the attachment to come off and cause injury or death.

1. Use the step, safety treads, and grab handles to get on and off the loader and attachment.
2. Sitting in the operator's seat, lower seat bar (if so equipped) and fasten the seat belt.
3. Drive the loader to the rear of the attachment. Put the loader quick attach coupler into the attachment mounting bracket.
4. Tilt the loader coupler backward a small amount until it is fully engaged in the attachment mounting bracket.
5. Stop the engine and engage the park brake.
6. Secure the coupler locking mechanism that attaches the attachment to the loader.
7. Connect the hydraulic quick couplers from the attachment to the loader.



IMPORTANT: Wipe the ends of the hydraulic quick couplers (both lead and loader) with a rag to remove any possible contamination. Contamination can cause hydraulic components to fail and is not covered under warranty.

IMPORTANT: Make sure the quick couplers are fully engaged. If the quick couplers do not fully engage, check to see that the couplers are the same size and brand. Do not force the quick couplers together.

NOTE: See the loader's operator's manual for auxiliary hydraulic specifications and connection instructions.

NOTE: Attachment is shipped with 1/2" NPT fittings on the ends of the lead hoses.

8. Make sure the hoses are properly routed to fit your specific loader. If the hoses are not routed correctly, hoses may get pinched or rub on tires. Be sure to check the hose routing through the full range of intended motion of the attachment before operating it.
More than one routing may be acceptable depending on the loader. Pick the routing that best suits your loader.

IMPORTANT: Proper hose routing is the responsibility of the owner and/or operator. Pinched or stretched hoses are not covered under warranty.

Mounting is now complete and you are ready to use the attachment. Use reverse order of above instructions to dismount the attachment from the loader.

OPERATING INSTRUCTIONS

1. With the operator in the seat of the loader, the seat belt fastened, and the seat bar lowered (if so equipped), start the engine.
2. Raise the attachment slightly off of the ground.
3. Activate the loader's auxiliary hydraulics to open and close the grapple in order to pick up and move objects.

WARNING

If the grappled object becomes unstable or unbalanced, lower the attachment to the ground and repeat the grappling process until the object being lifted remains stable the entire time it is being lifted and moved. Always lower the object to the ground before opening the grapple to release it.

WARNING

To avoid injury or death, do not allow any person to be directly under the attachment or load at any time.

CAUTION

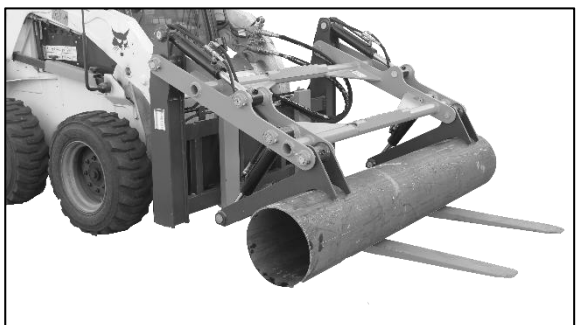
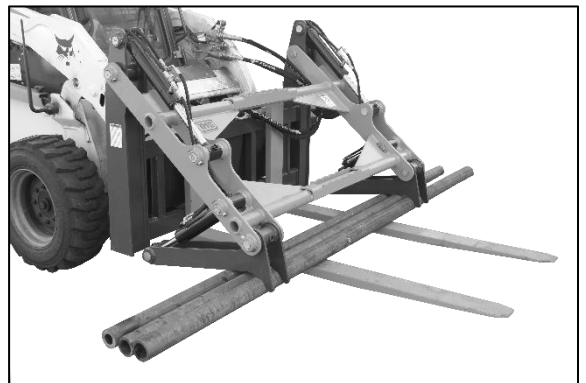
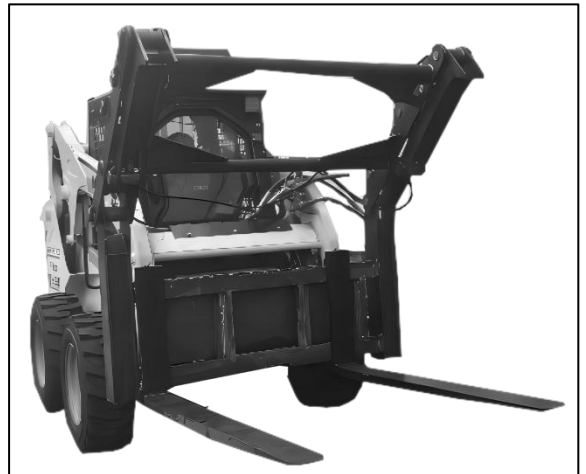
Carry load as low as possible to avoid serious injury or death from tipping or falling load.

4. With the arms in the floating position, the pipe grapple can handle pipes/material up to 18 inches in diameter.

NOTE: When grappling objects with the arms in the floating position, material should be grappled near the ends of the forks in order to apply down pressure with the grapple arms.

WARNING

Falling loads can result in serious injury or death. The diameter of pipe/material that can be secured depends on the grapple arm setting. Always set the grapple arms in the appropriate position for the material being handled. Materials may slip out of the grapple if they are too large or too small for the grapple setting.



ROUTINE MAINTENANCE





WARNING

Lower the attachment to rest flat on the ground, shut down the engine, relieve the hydraulic pressure to the attachment, set the park brake, and wait for all motion to stop before leaving the operator's seat to perform service of any kind.



It is the operator's responsibility to make daily inspections of the loader and attachment for damage, loose bolts, fluid leaks, or anything else that could cause a potential service or safety problem. Preventive maintenance is the easiest and least expensive type of maintenance.

IMPORTANT: Bolts can loosen after initial usage. After the first hour of operation check all bolts.

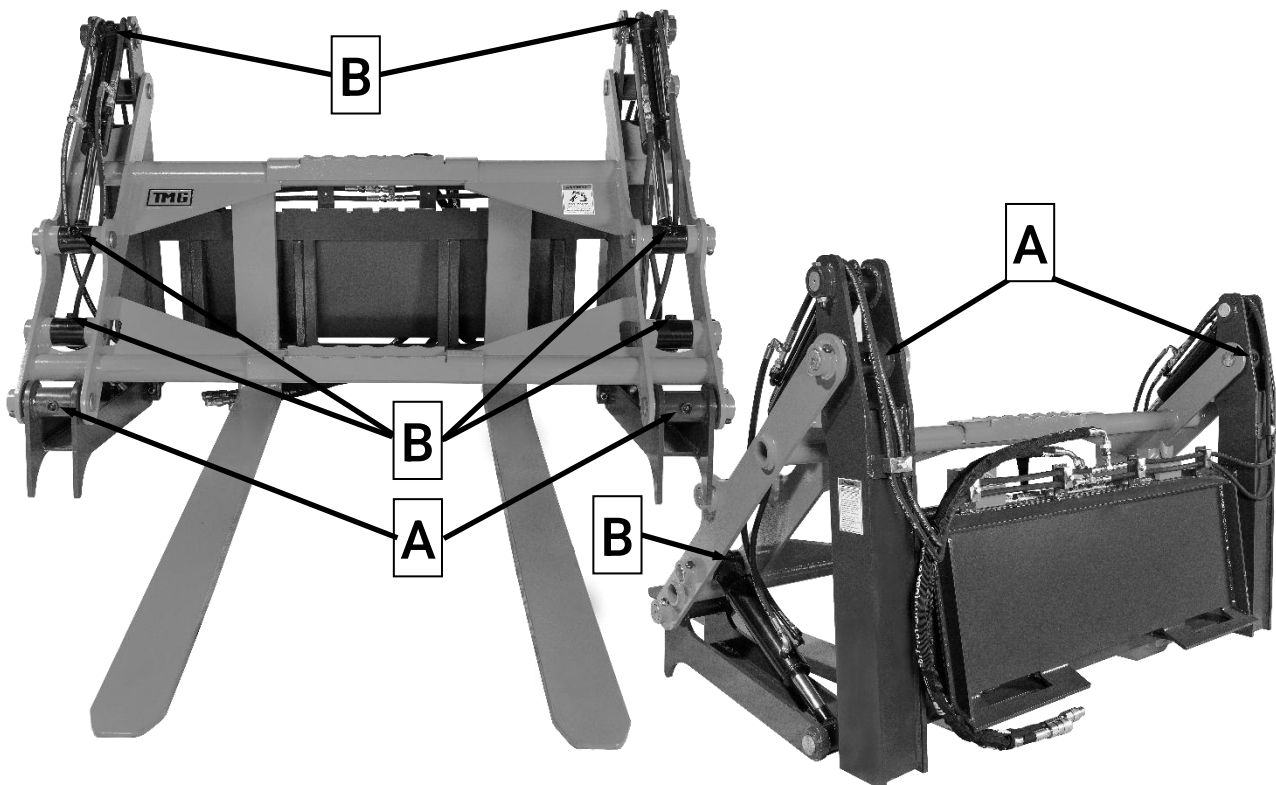
LUBRICATION

Lubrication Legend		Multipurpose spray lube		No. 2 Lithium base gun grease		Clean engine oil		Intervals at which lubrication is required
-----------------------	---	----------------------------	---	----------------------------------	---	---------------------	---	---

Use No. 2 lithium base gun grease when lubricating all attachment grease fittings.

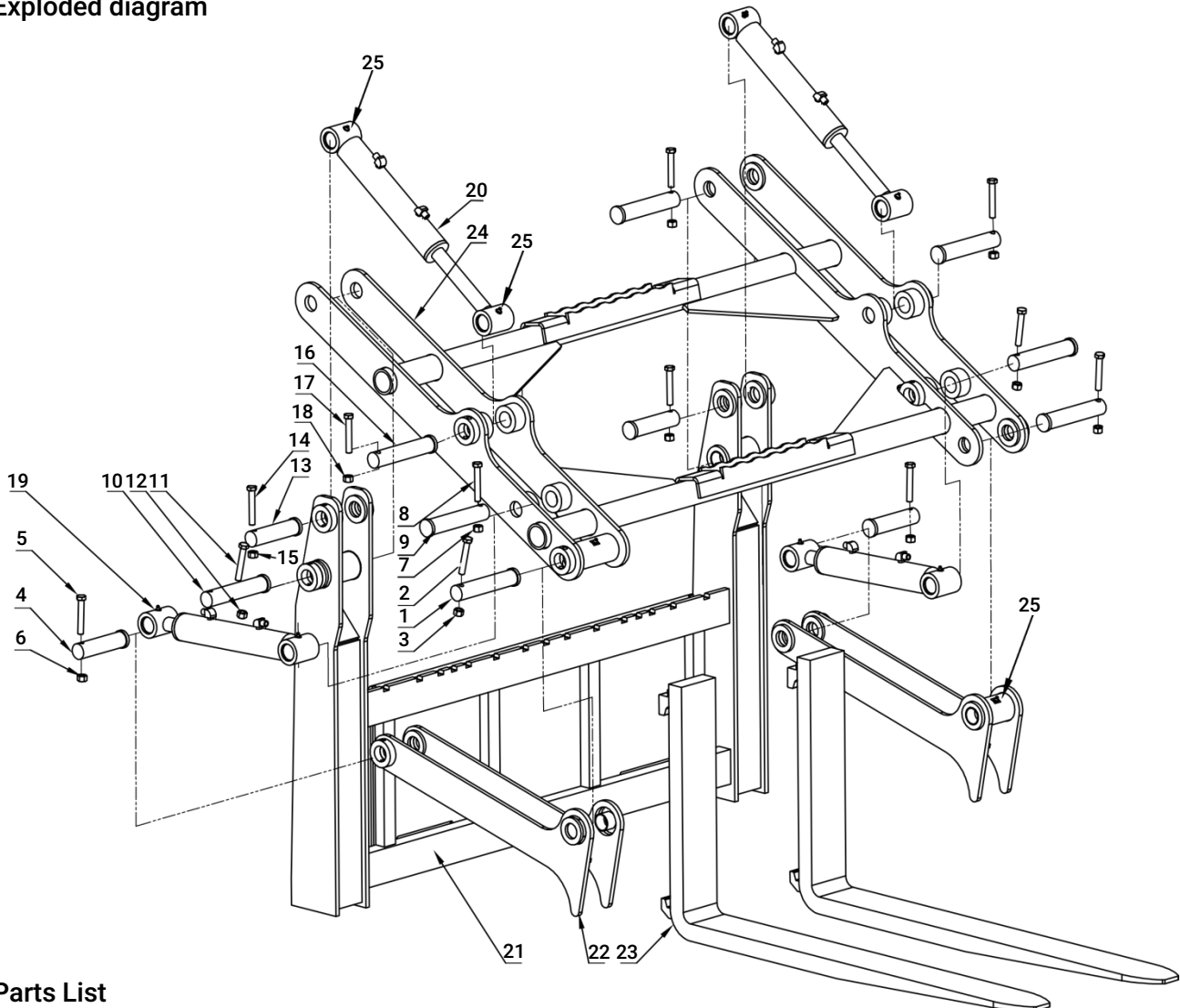
	
---	---

Grease all four arm pivot zerks [A] and all eight cylinder zerks [B] after every 8 hours of operation.



EXPLODED VIEW & PARTS LIST

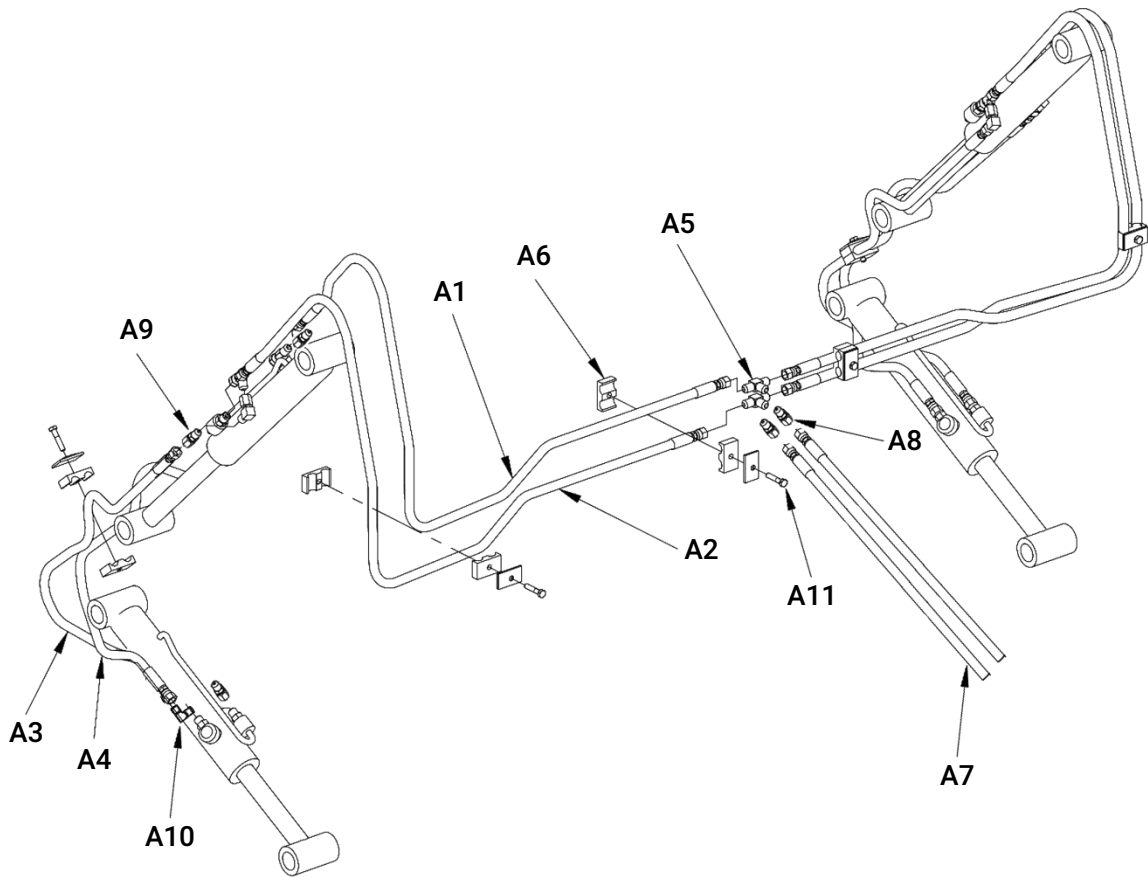
1. Exploded diagram



2. Parts List

PART NO.	DESCRIPTION	QTY	PART NO.	DESCRIPTION	QTY
1	Pin Ø40x200	2	14	Hexagon bolt M10x70	1
2	Hexagon bolt M10x70	2	15	Lock nut M10	2
3	Lock nut M10	2	16	Pin Ø40x200	2
4	Pin Ø40x162	2	17	Hexagon bolt M10x70	2
5	Hexagon bolt M10x70	2	18	Lock nut M10	2
6	Lock nut M10	2	19	Cylinder 2.8"x4"	2
7	Cylinder rod pin Ø40x190	2	20	Cylinder 2.8"x8"	2
8	Hexagon bolt M10x70	2	21	Pipe pallet fork frame	1
9	Lock nut M10	2	22	Pipe pallet fork clamp	2
10	Cylinder pin Ø40x200	2	23	Pipe pallet fork link weldment	2
11	Hexagon bolt M10x70	2	24	Pallet fork tine 60"x4-3/4"x1-3/4"	2
12	Lock nut M10	2	25	Grease nozzle M10x1	12
13	Pin Ø40x162	2			

3. Hydraulic line exploded diagram



4. Hydraulic line parts list

PART NO.	DESCRIPTION	QTY	PART NO.	DESCRIPTION	QTY
A1	Hydraulic hose 1/4"x68"	2	A7	Hydraulic hose W/C elbow 1/4"x59" -1/2" NPT	2
A2	Hydraulic hose 1/4"x64"	2	A8	Connector 1/2"-9/16"	2
A3	Hydraulic hose W/C elbow 1/4"x33"	2	A9	Connector 1/4"-9/16"	6
A4	Hydraulic hose 1/4"x28"	2	A10	Elbow connector 1/4"-9/16"	2
A5	Tee Joint 9/16"	6	A11	Hexagon bolt M8x40	6
A6	Double hole pipe clamp	6			