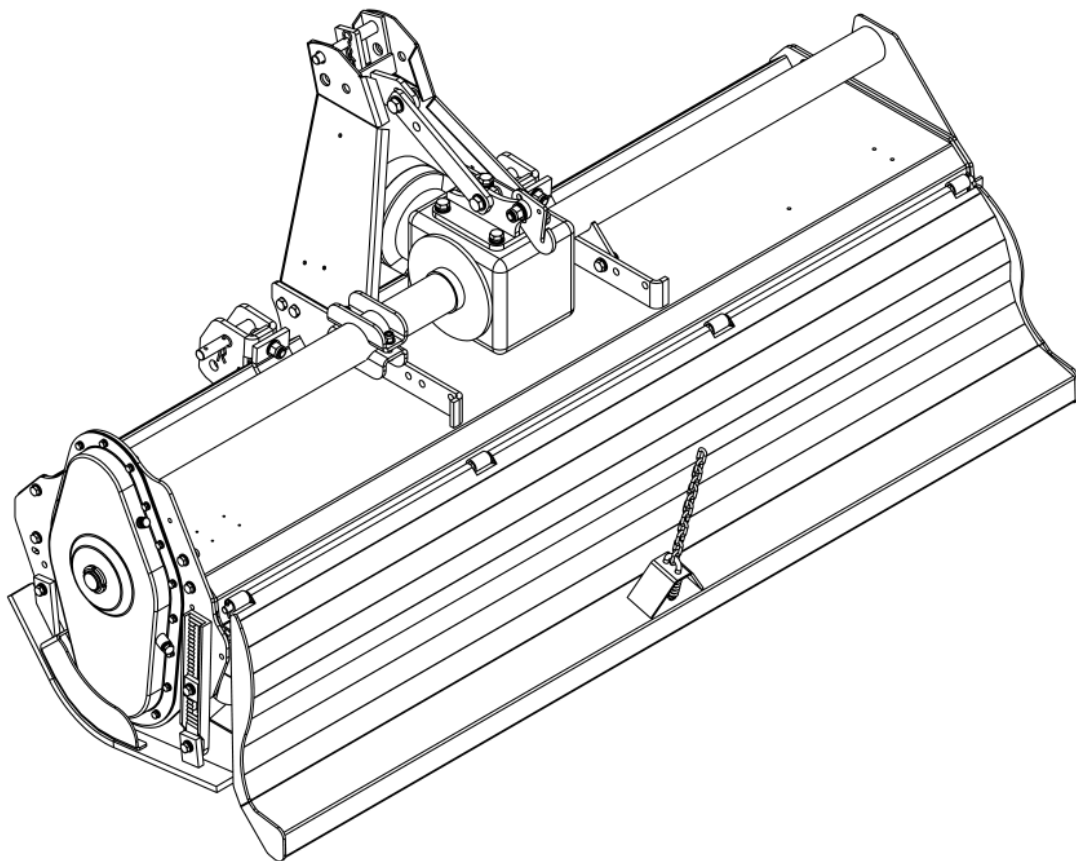
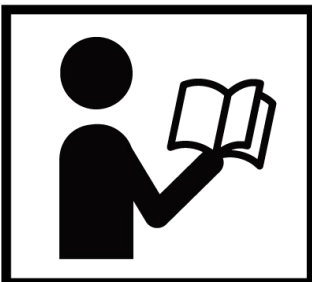


MODEL TMG-RT83

83" 3-POINT ROTARY TILLER WITH PTO SHAFT



⚠ WARNING



- Please read and understand the product manual completely before assembly
- Check against the parts list to make sure all parts are received
- Wear proper safety goggles or other protective gears while in assembly
- Do not return the product to dealer. They are not equipped to handle your requests.

Missing parts or questions on assembly?

Please call: 1-877-761-2819 or email: cs@tmgindustrial.com

TABLE OF CONTENTS

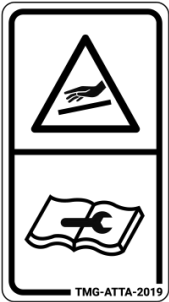
SAFETY INSTRUCTIONS	3
OPERATING SAFETY	4
PARTS DESCRIPTION AND FUCTION.....	7
PRODUCTS SPECIFICATIONS.....	9
UNPACKING & ASSEMBLY	10
CONNECTING TRACTOR	14
CHECK BEFORE OPERATING.....	18
LUBRICATION POINTS SUMMARY	19
OPERATING ESSENTIALS	20
OPERATION FINISH	21
MAINTENANCE SCHEDULE	21
TROUBLESHOOTING.....	22
PRODUCT PARTS LIST	23

SAFETY INSTRUCTIONS



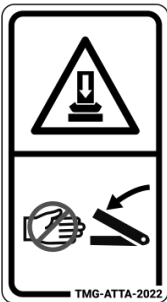
Before operating the ROTARY TILLER read the following safety instructions. Failure to comply with these warnings may result in serious injury or death.

WARNING DECALS



Warning!
Read and understand the operator manual completely before operating your rotary tiller.

CAUTION
FILL GEARBOX WITH SAE 90 GEAR LUBE
Gearbox is shipped without oil. Oil must be added before operation.
TMG-ATTA-2023



Caution!
Keep hand, feet, hair and clothing away from all moving parts.



Caution!
Keep all bystanders a safe distance away from machine and tractor.



Caution!
Before connecting the tractor, make sure that the speed of the tractor is correct. If the speed is incorrect, the machine may be damaged or human casualties may occur



OIL DRAIN HOLE
TMG-GNRL-0012

Caution!
Keep the driving part of the machine lubricated

OPERATING SAFETY



Failure to comply with these warnings may result in serious injury or death!



Read and understand the operator manual before operating, servicing, adjusting, repairing or removing.

Operating before

Warning

Read the instruction before operation

Failure to understand warning or caution completely may result in injury before operation.

Warning

Ensure the instruction is placed around the machine

Don't operate especially for you don't know how to operate and the instruction is not around.

Warning

Don't operate as following conditions

It may result in accidents when your body is uncomfortable or not familiar with the machine.

- Don't operate as following conditions
- You can't concentrate to operate because of over fatigue, sick, under the influence of drugs and other reasons.
- After drinking.
- Operator who is unskilled.
- Pregnant women and minors.

Warning

Select the appropriate clothing

The uncomfortable clothing worn by operator will result in serious injury or death.

Please operate according to a hint of clothing

- Not wear a big jacket and trousers
- The sleeves and hems cannot too big.
- Wear safety helmets
- Don't wear in headscarf or towel .

Warning

Lend out the machine

It's very important to give operating instructions to the borrowers and advise detailed information of warning decals and operating notes.

Warning

Not allow machine modification

Unauthorized modification with device and component of other companies may weaken the function and/or safety and could affect the life of the equipment. Please select and use genuine parts as per the following part list.

⚠ Warning

Machine start and starting

- Ensure that the rotary hoe is connected to the tractor by three-point linkage.
- Ensure that the tractor is in neutral when it is started. Otherwise will cause the machine out of control and accidents.
- Ensure that PTO is cut off then start engine.
- Otherwise will injure bystanders.
- The tractor head maybe tilt and driver fall as well as injure bystanders when machine start under the high speed gear condition. Please ensure the surrounding is safe, then start machine under the lower speed gear condition and forward.
- Keep the ventilation when start tractor indoors, otherwise tractor exhaust may cause poisoning.

⚠ Warning

Tractor mounting operation

- Keep others away from machine and tractor when it is running or operating.
- Carry out tractor mounting operation on a flat or hard ground.
- Install moderate amount of weight loading according to tractor model and keep a stable center of gravity prior to carry out tractor mounting operation.

⚠ Warning

PTO using

- Don't use PTO without plastic cover shell, or you will be involved in and get injured.
- Cut the engine when dismantle the PTO
- Make sure to fix the plastic casing of chain, or you will be involved in and get injured
- Turn to page 13 to see the specific requirements of PTO.

⚠ Warning

- Ensure to connect on the left and right brake pedal when working machines moving.
- The driver and people around will be injured if others on the tractor fall off.
- Emergency braking and turning are forbidden.
- Turning until keep the safe distance between people and blocks.
- Move slowly on the ramps and uneven road.
- Use suitable backing board on the terrain with big drop.
- Do not carry people and luggage on the working machine.
- Ensure to cut off the PTO engine when moving.

During operation

⚠ Danger

- Stay away from the machine during operation, or you will be injured.
- Operate abide the specified speed, or the PTO will be damaged and people will be injured.
- Do not carry people and luggage on the working machine. .
- Shift down before into the ramps. High-speed moving on the ramps will slip.
- Concentrate during operation.
- Stay away from the machine.
- Do not close to the bevel, the inclined plane operation will cause the tractor turn over, so slow down the moving and operation speed.
- Cut off the PTO engine and stop the tractor when adjust the machine and remove the debris.
- Park the tractor on the flat field. Cut off the engine after the machine down to the ground.

After Operating

⚠ Warning

Make sure to cut off the PTO and tractor engine before cleaning.

⚠ Warning

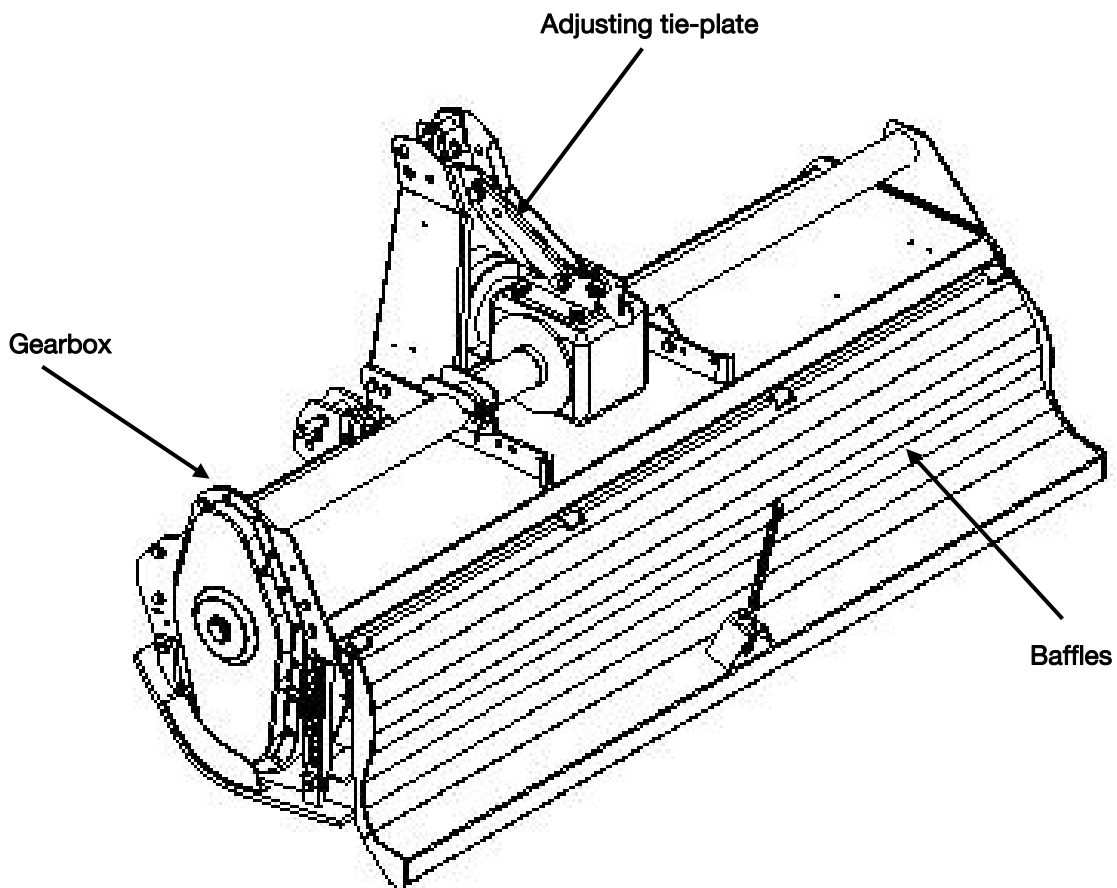
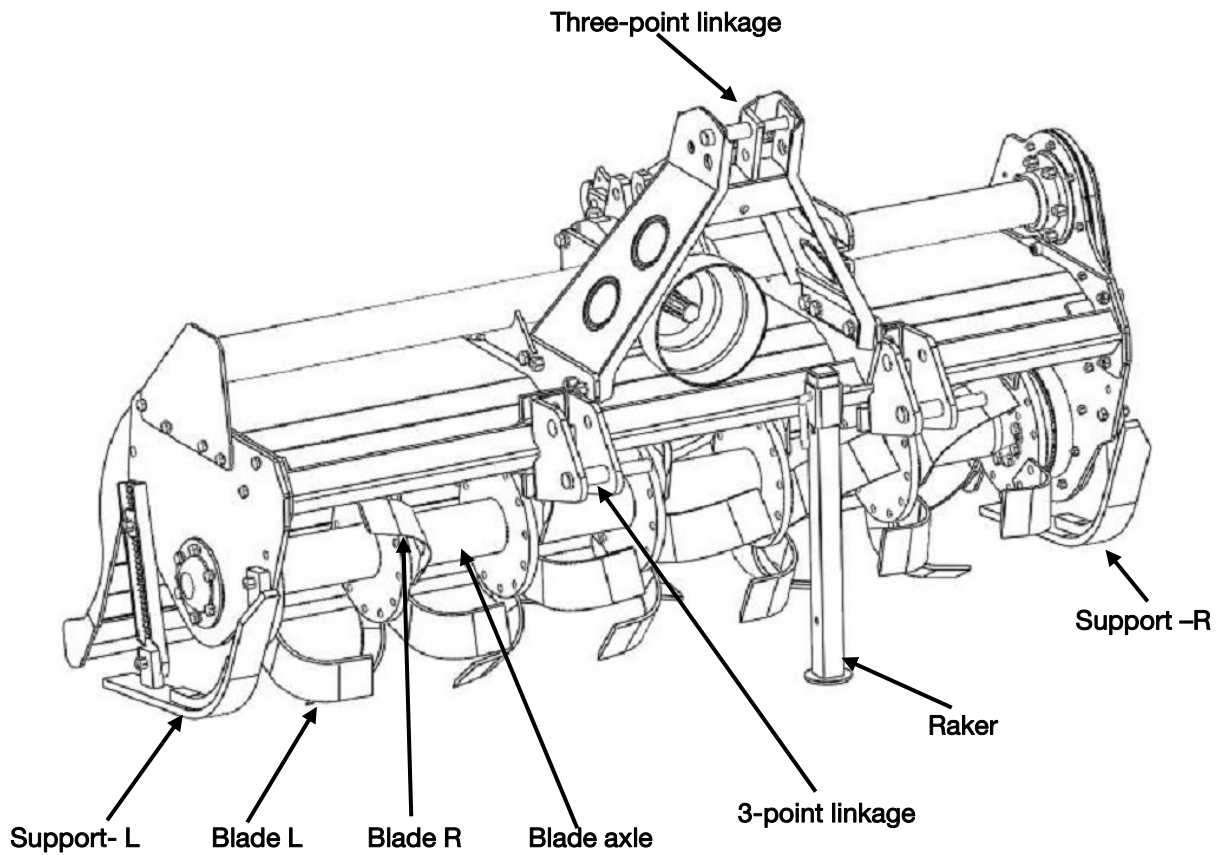
- The problems of the machine will not be found if regardless of the inspection unit after operation. Inspection unit carefully according to the operating instruction.
- When using 3-point suspension to raise the machine to do the inspection, the machine will drop without attention. Do the inspection after locking the oil way of the 3-point suspension.

⚠ Warning

Bad treatment, Inspection unit, repair

- Maintenance according to the operating instruction, or the machine will be damaged.
- Working with the tractor on the flat and hard field.
- Cut off the PTO engine and stop the tractor when adjust the machine and remove the debris.
- Make the rack and ancillary shoring before drilling in.
- Repair and change the hydraulic joint and hose in time in the condition of without pressure in the original hose.
- The dismantle protective components in order to treat bad, instruction unit and repair should install back. Or they will be involved in the machine and cause the accident.

PARTS DESCRIPTION AND FUNCTION



1. Three-point linkage

Connect tractor and rotary tiller

2. Support R&L

It can guide tilling direction and adjust tilling depth as well as avoid blade touch ground directly after operation finished.

3. R&L blade

To tilling

4. Blade axle

Drive blade to rotate.

5. Raker

To avoid blade touch ground directly and keep machine level after operation finished.

6. Adjusting tie-plate

Connect three-point linkage and gearbox, reduce machine vibration.

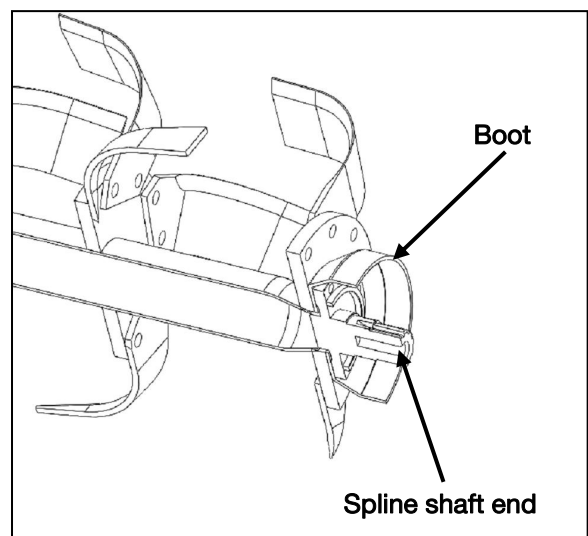
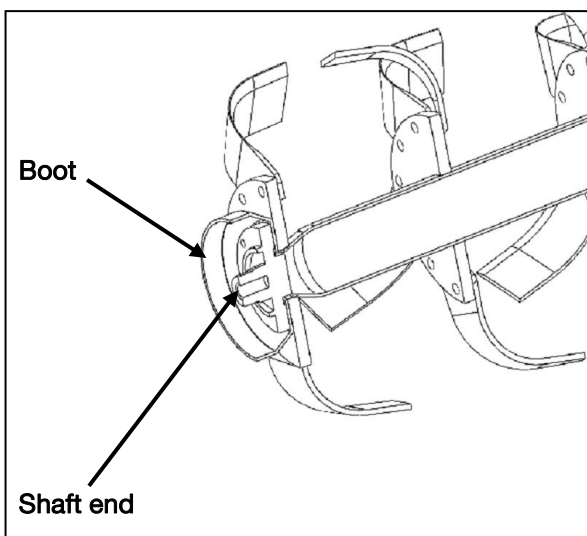
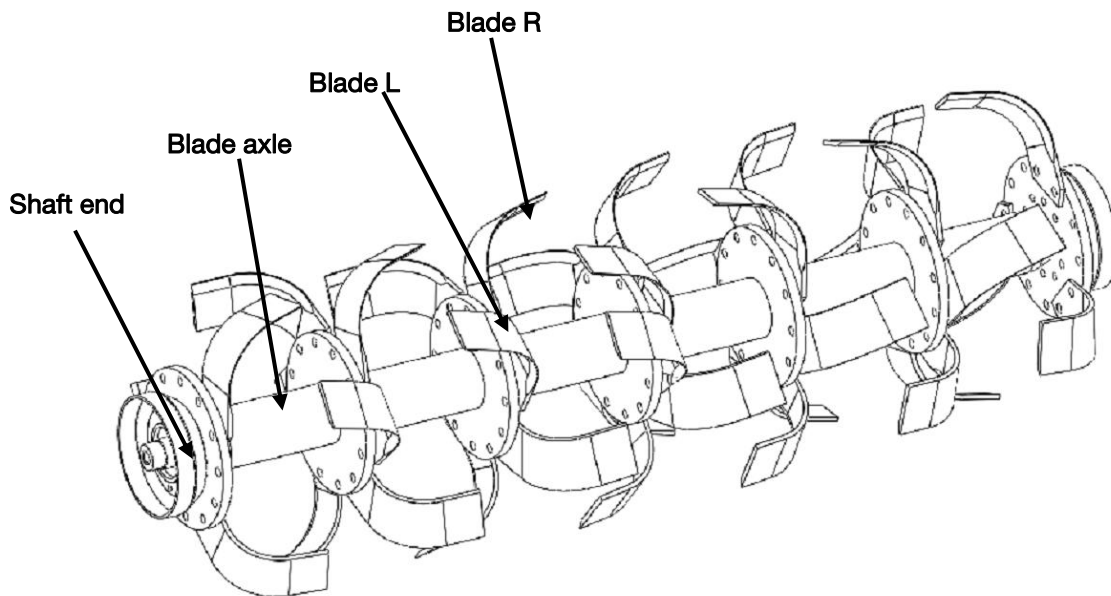
7. Gearbox

Change the output speed of the tractor and transmit power to the blade axle.

8. Baffles

Crush and smooth land

Blade axle assembly



(1) Check

Check the appearance of partial assembly and ensure whether it has flaw and damage, blade edge curl. If has, just replace it.

(2) Assembly parts list

Ensure all parts without loss according to the explosive view.

(3) Assemble shaft end, spline shaft end, boot and blade

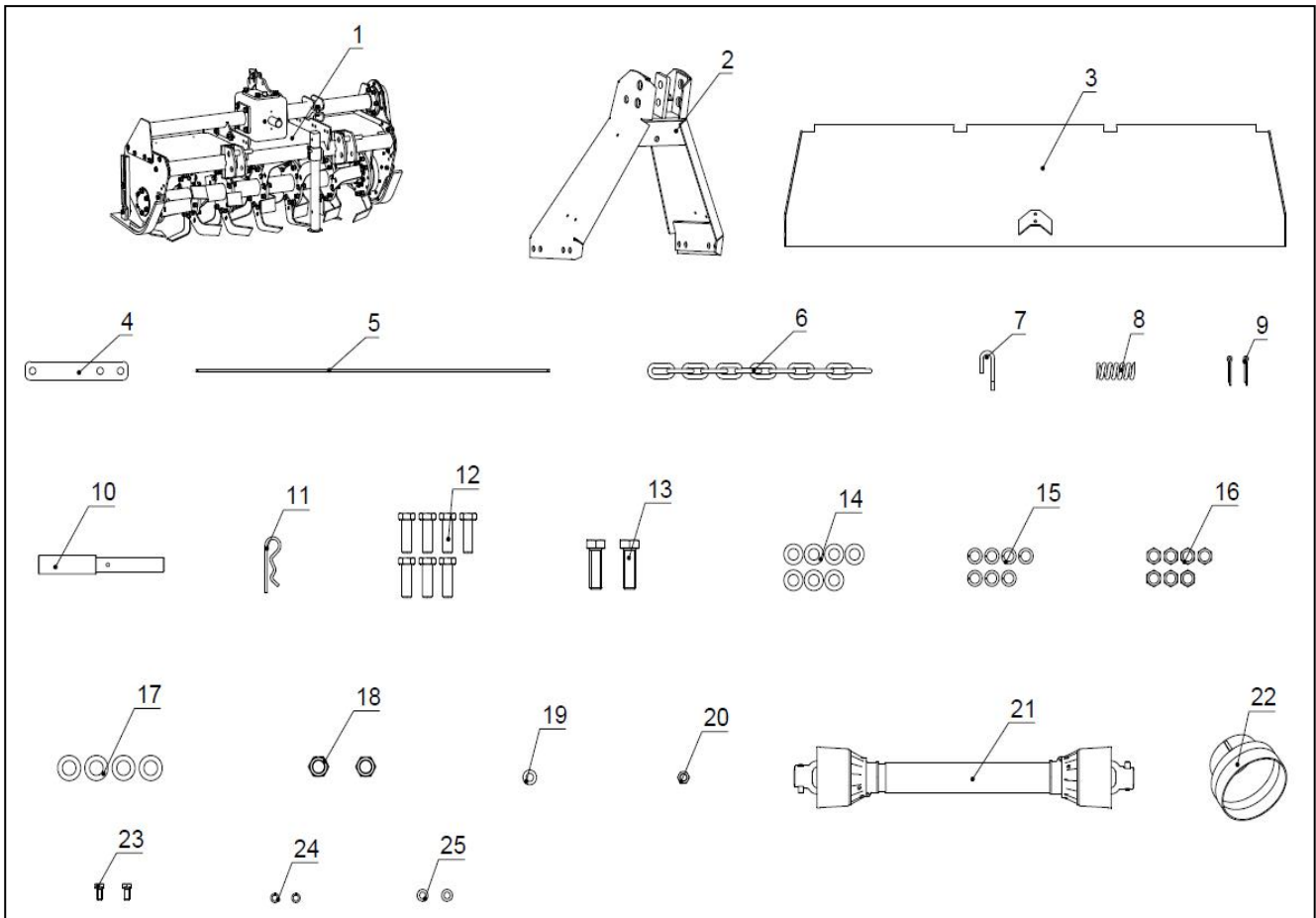
Install parts following the order from left to right or right to left, tighten bolt and nut. The both sides of shaft end are installed priority then the blade.

PRODUCTS SPECIFICATIONS

Model No.	TMG-RT83
Working width	83"
Tilling depth	4-6"
Blade quantity	48
Rotary flanges	9
PTO rotary speed	540RPM
PTO length	41"(105cm)
Rotary shaft speed	243RPM
Tractor power	45-80HP
Type of drive	Gear drive
Shipping Weight	1210 lb
Shipping Size	88" x34.5" x42"

UNPACKING & ASSEMBLY

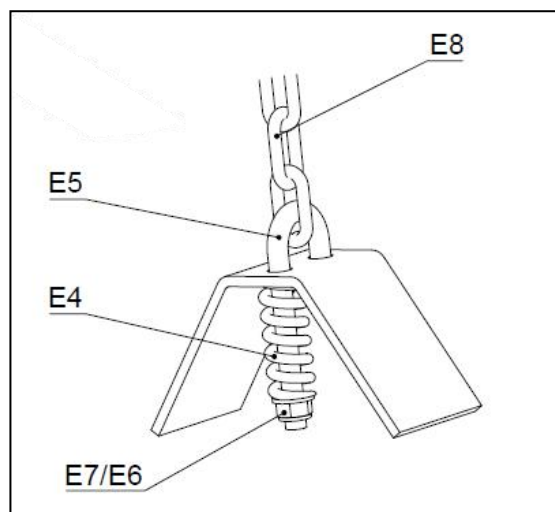
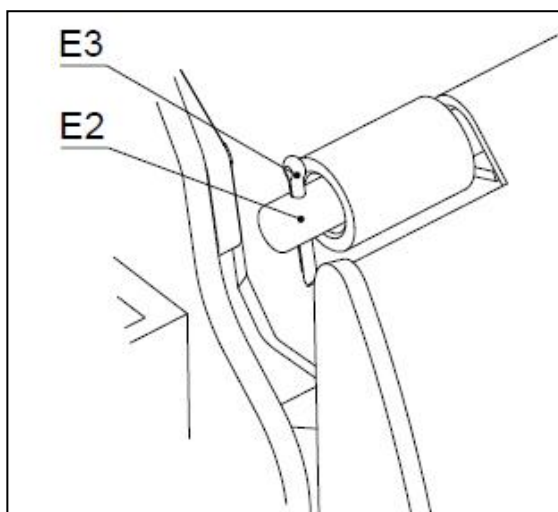
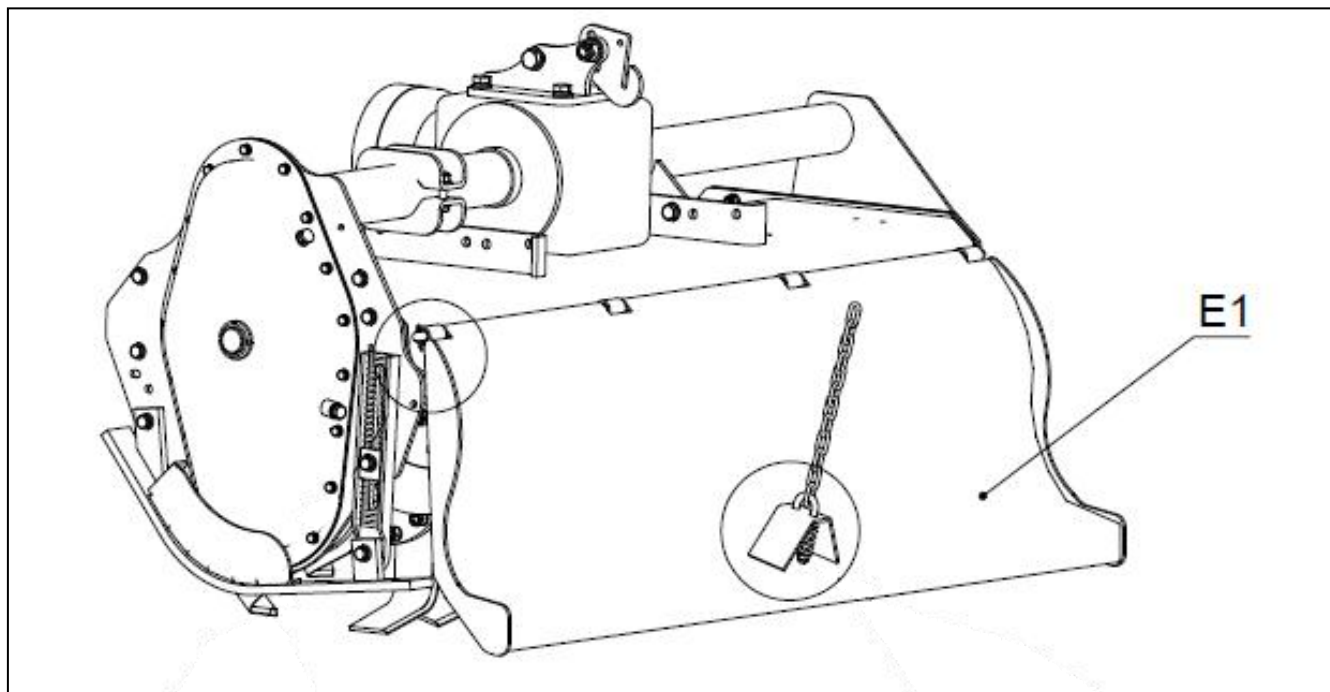
1. After unpacking, check the following components



* All numbers are not part numbers in the drawings. For correct part numbers, see explosive diagram

No.	Description	Qty	No.	Description	Qty
1	Host	1	14	M14 Flat Washer	7
2	Hanging Welds	1	15	M14 Spring Washer	7
3	Tailgate Welds	1	16	M14 Ordinary Nut	7
4	Pull Plate	1	17	M18 Flat Washer	4
5	Tailgate Shaft	1	18	M18 Lock Nut	2
6	Galvanized Chain	1	19	M10 Flat Washer	1
7	Spring Hook	1	20	M10 Lock Nut	1
8	Compression Spring	1	21	PTO drive Shaft	1
9	Cotter Pin	2	22	PTO dust Cover	1
10	Upper Hanging Pin	1	23	M8*16 Hexagon Bolts	2
11	R Pin	1	24	M8 Spring Washer	2
12	M14*45 Hexagon Bolts	7	25	M8 Flat Washer	2
13	M18*55 Hexagon Bolts	2			

2. Installation of the tailgate assembly



Installation steps:

1. First install the chain, spring hook and compression spring on the rear baffle according to the above picture.
2. Align the installation hole of the rear baffle with the hole on the main unit, then pass the baffle shaft and fix it with R pin.

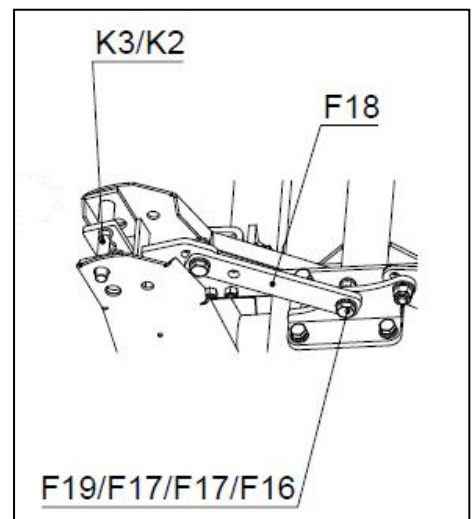
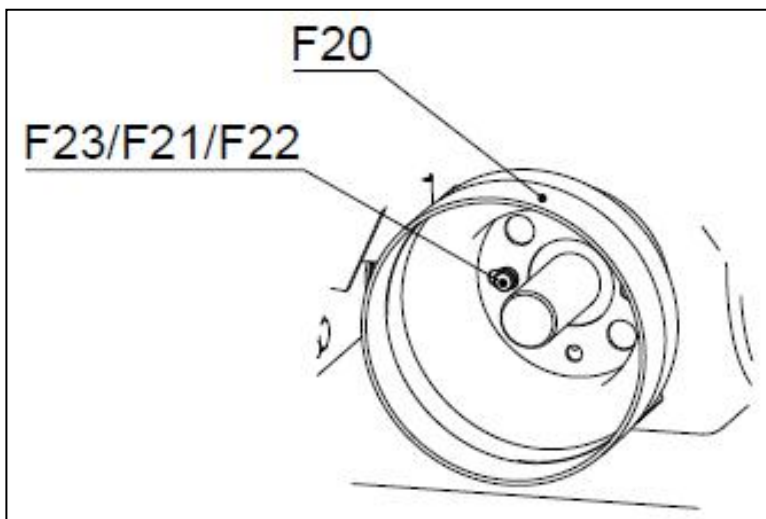
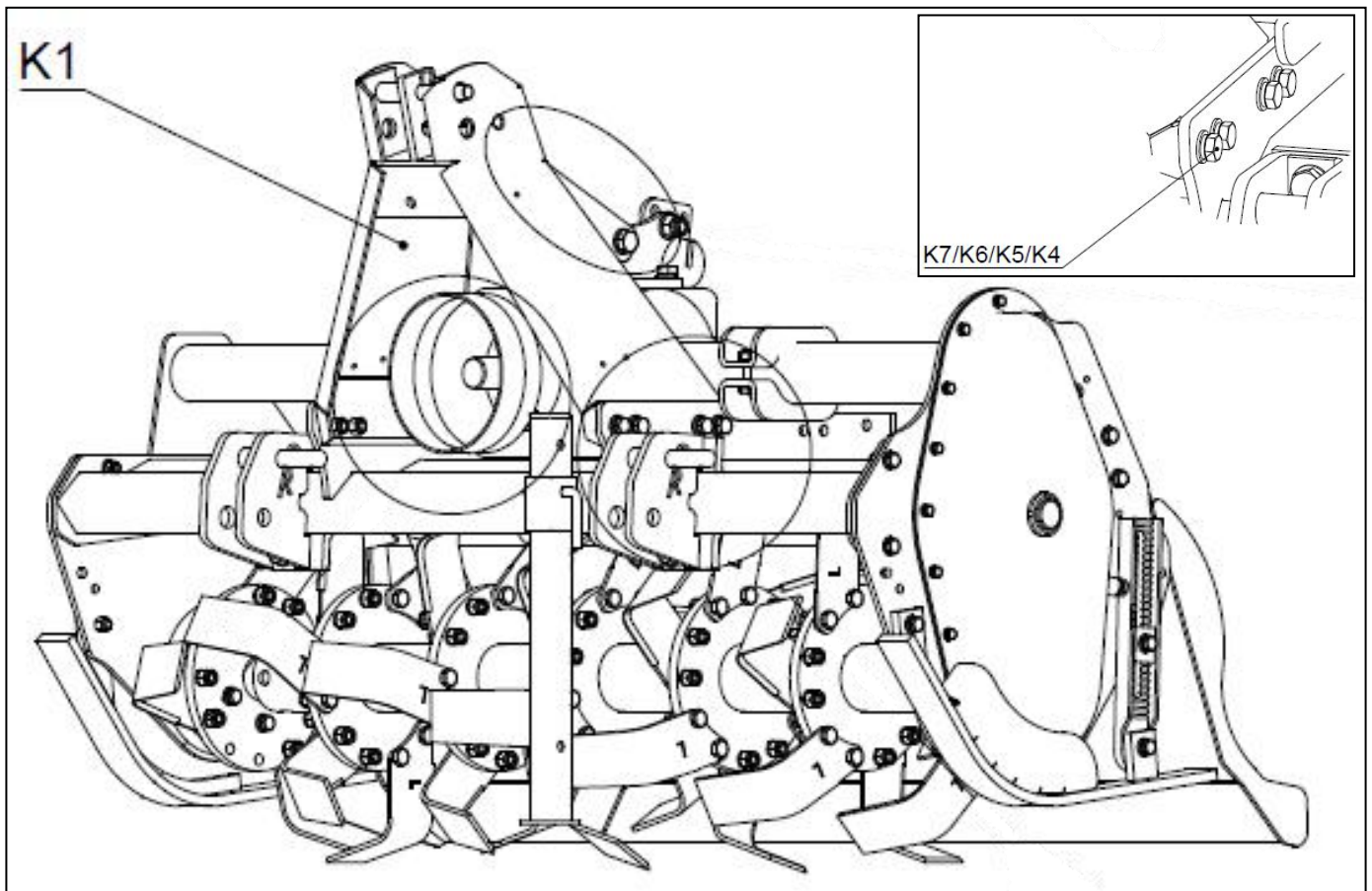
Importance: All bolts are locked in place without shaking.



WARNING: Once the assembly bolts are not fastened in place, there will be abnormal noises when the machine is working.

Parts no.	Description	Specifications	Qty
E1	Tailgate Welds		1
E2	Tailgate shaft		1
E8	Galvanized chain		1
E5	Spring hook		1
E4	Compression spring		1
E3	Cotter pin		2
E7	Flat washers	Ø10	1
E6	Lock nut	M10	1

3. Suspension and dust cover installation



Installation steps:

1. Align the mounting holes of the dust cover with the mounting holes of the gear box and fasten them with bolts.
2. Align the suspension with the mounting holes on the main unit as shown in the picture above and put on the bolts, then put the bolts on the pull plate connecting the suspension and the mounting seat on the gear box. After all parts are installed, tighten the bolts, and finally plug them in. Suspension pin and R pin.

Importance: All bolts are locked in place without shaking.



WARNING: Once the assembly bolts are not fastened in place, there will be abnormal noises when the machine is working.

Parts no.	Description	Specifications	Qty
F16	Lock nut	M18	2
F17	Flat washer	Ø18	4
F18	Pull plate		1
F19	Hexagon Bolts	M18*55	2
F20	PTO dust cover		1
F21	Spring washer	Ø8	2
F22	Flat washer	Ø8	2
F23	Hexagon Bolts	M8*16	2
K1	Hanging Welds		1
K2	R pin		1
K3	Upper hanging pin		1
K4	Ordinary nut	M14	7
K5	Flat washer		7
K6	Spring washer		7
K7	Hexagon Bolts	M14*45	7

CONNECTING TRACTOR

1. Three-point linkage

⚠ Warning !

In the process of connection, when the tractor is moving, if there is people between the tractor and working machine, it may cause injury accident. Be sure no people stand between the tractor and working machine during the tractor moving.

Lower lifting pin types

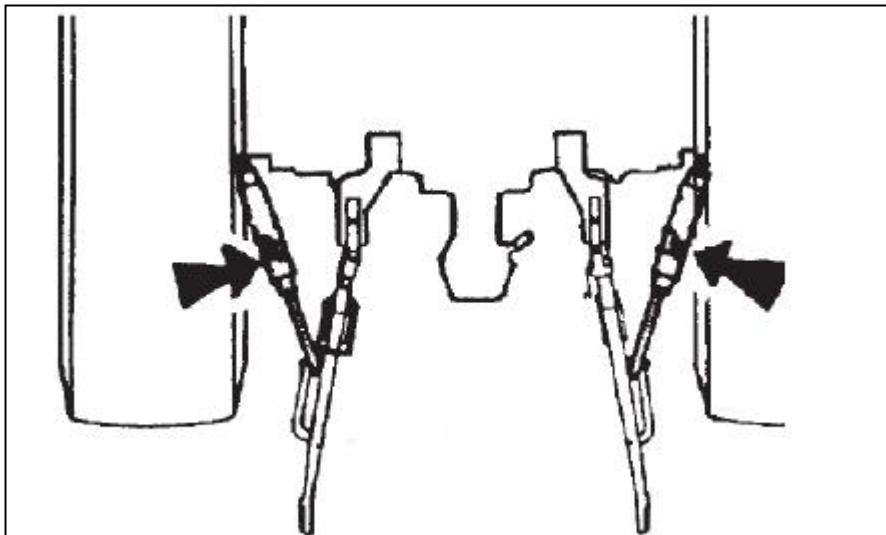
TMG-RT83

I and II

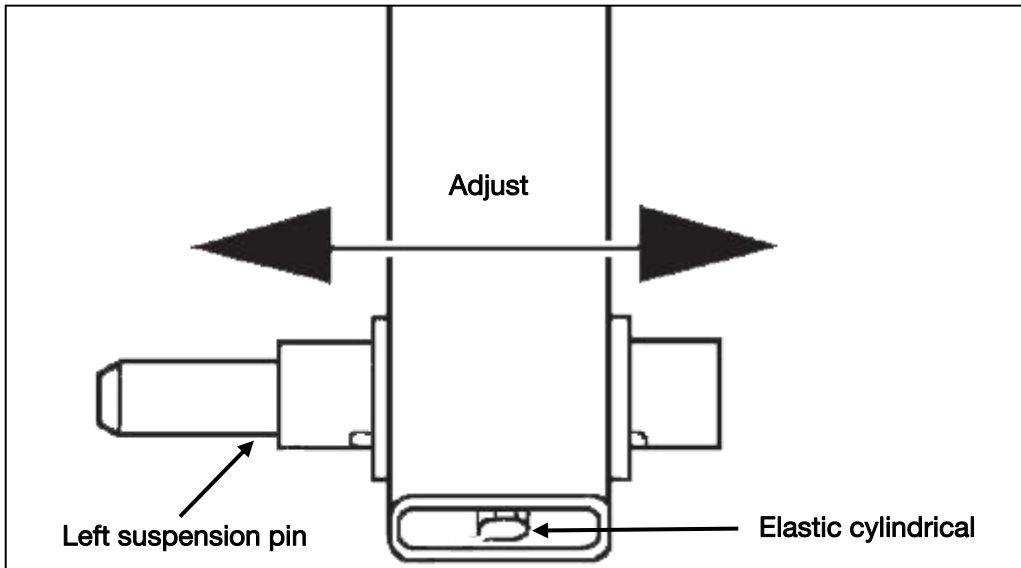
2. Connection and adjustment

⚠ Caution ! Make sure the tractor is fixed in the process of connection

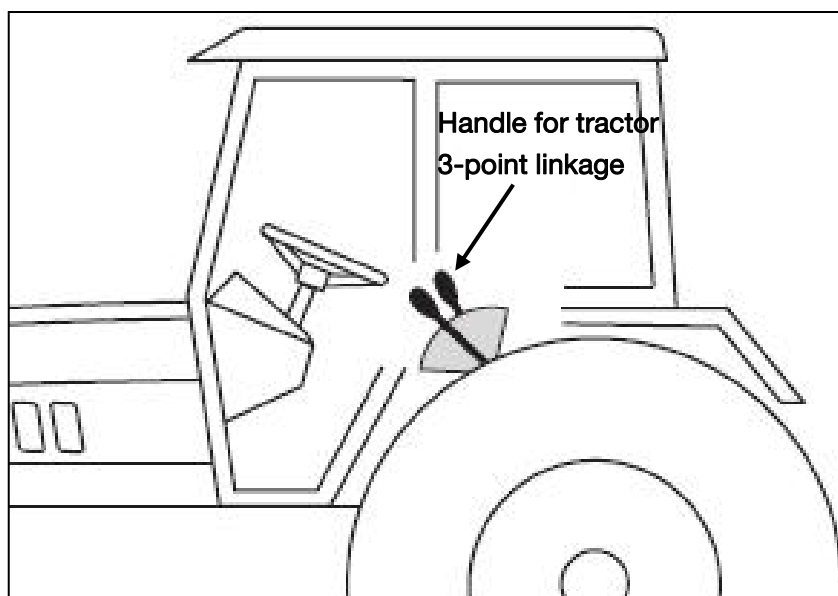
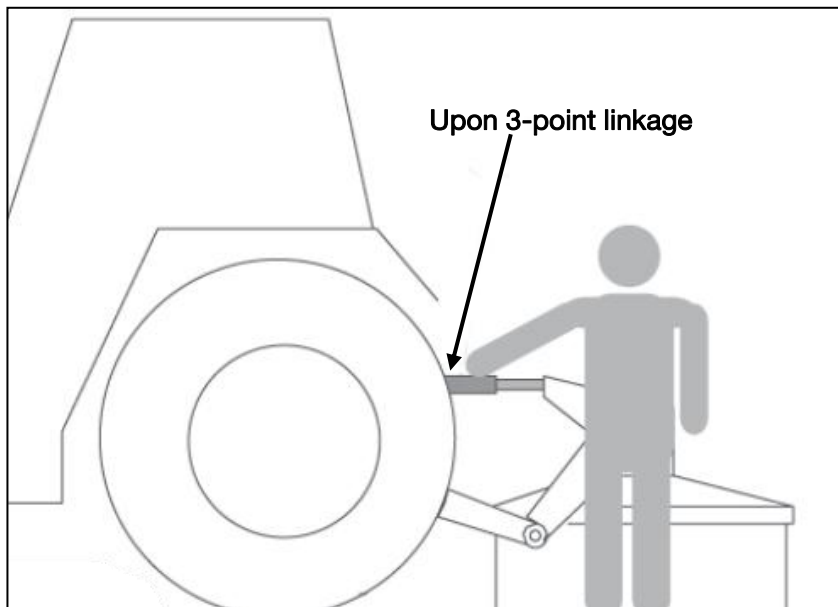
- Start the tractor engine, tractor and machine head lower link under suspension corresponds to the position of the pin, rewind, stop, stop the engine, put up parking stalls.
- Connect Left towing arm, the left arm on the tractor towing the working machine is left hanging inserted pin, the locking detent. Right arm pulling the same way.
- Adjust the towing arms in the same height, as shown below:



If the magnitude of the tractor towing arms is too narrow, adjust the left suspension pin inward as below:



d. Adjust angle, to obtain the most appropriate cutting angle, adjust the upon 3-point linkage suspension to ensure the suitable cutting angle.

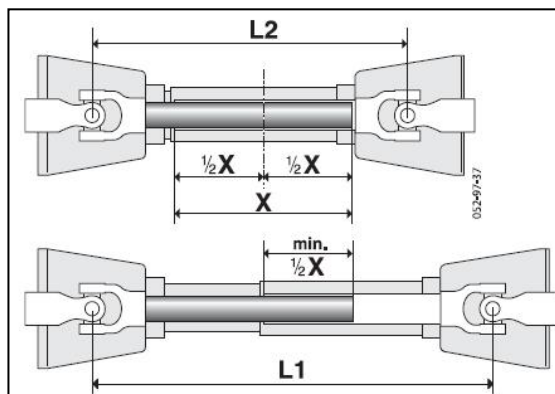


3. PTO installation

⚠ Danger

- If you use no plastic cover to protect the coupling, it is possible to be involved in the occurrence of injuries. Do not use no plastic casing coupling.
- If you use damaged couplings, injuries may occur entangled.
Couplings if damaged, replace it immediately. Please check if coupling have damage before using.
- When connected to the tractor and rotary hoe, as a third party do not pay attention, inadvertently let the power output shaft rotation, injuries may occur, after you cut off the power and stop the tractor engine PTO can be connected to the tractor.

a. Confirm coupling length



The minimum overlap of inner and outer coupling tube 1/2X size should be 220mm, if the size less than 100mm, please change the coupling

L1: The maximum length of connection to the tractor.

L2: The minimum length of the connection to the tractor

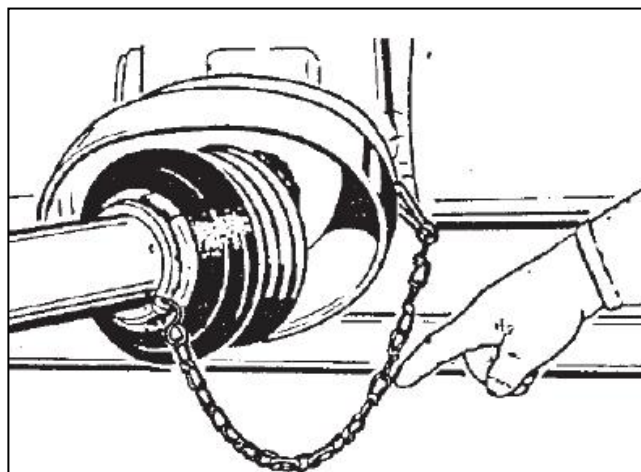
X: The overlap length.

b. The connection of coupling

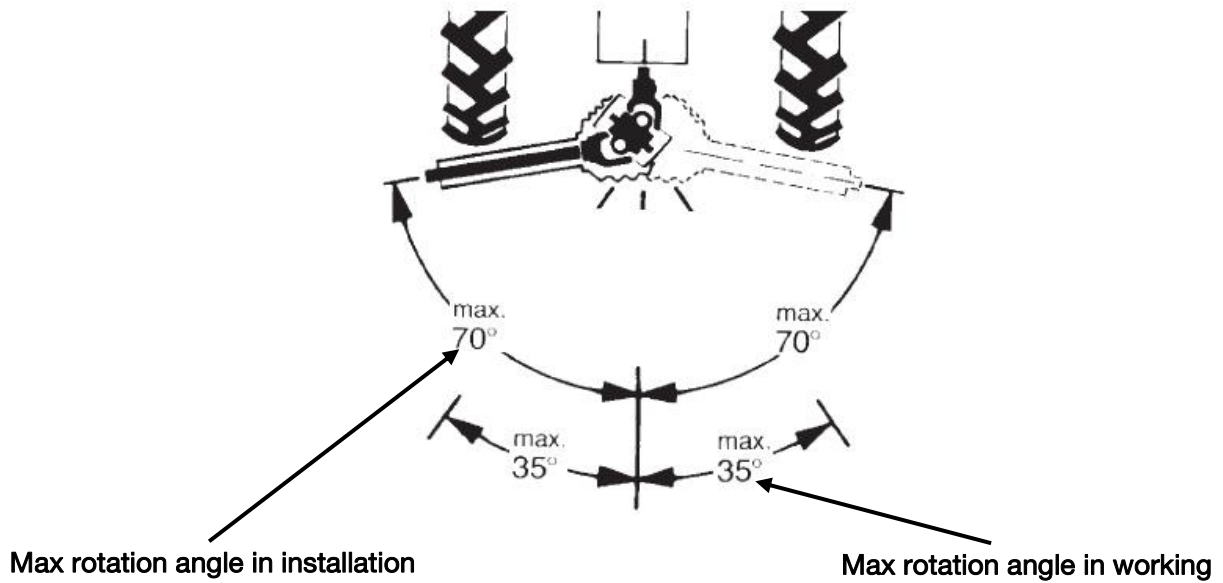
1. Coupling connect to the rotary hoe end

Coupling with keyway end connect to the rotary hoe input shaft until the lock pin is exposed to in the original location.

2. Fixed coupling plastic cover



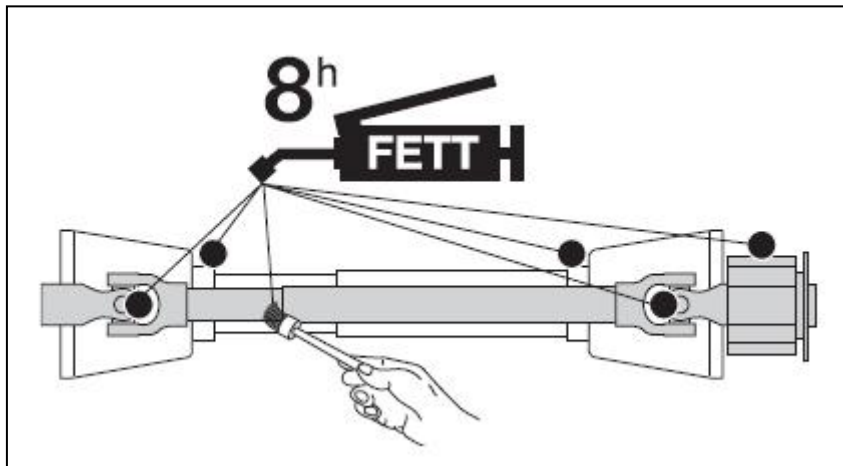
3. After connection, fixed the chain to prevent the plastic cover rotation
4. Max rotation angle of coupling



⚠ Noted !

If the shaft beyond its maximum operating angle of rotation at work, there will be unexpected injury accident. Be sure to fix the tractor three-point suspension before use.

4. Coupling lubrication and maintenance



Proper grease lubrication and maintenance will greatly enhance the transmission efficiency of the tractor.

After eight hours of continuous operation coupling, check above the pointed position should be oiling and lubrication.

CHECK BEFORE OPERATING

1. Check before operating

1. Check the various parts of the tractor

Please check the parts according to the manual

2. Check the connection site

- (1) Fix connection pin of three-point suspension
- (2) Check the stand foot retract

3. Check the coupling

- (1) Whether the coupling ends effectively connected with the machine and tractor
- (2) Security chain is valid is fixed.
- (3) Plastic protective cover is complete.
- (4) Security chain sag length is appropriate.

4. Rotary tiller machine inspection

- (1) The cutter blade bolts are tightened.
- (2) Whether the gearbox rotation is normal, the hydraulic oil in gearbox not exceed the volume of 1/3, if less need to add gear oil.
- (3) The various parts of the bolts and nuts are tightened.
- (4) The oil in each parts should be adequ

2. Check during engine starting

Danger

- If start the engine when the PTO does not cut off the power ,it may cause harm to the people around. Always switch off the PTO and then start the engine.
- When starting the engine, if it does not lower the rotary tiller is approaching, has no intention of falling or rising, people around may cause injury. Keep machine is approaching low before starting the engine.

1. Check the drive system

The new machine or machine long unused, you must first idling operation.

- (1) Start the tractor engine and low speed transfer to PTO.
- (2) The engine speed was adjusted to 1000 rev / min mode, idling about 5 minutes.
- (3) if the above normal, the rotational speed was adjusted to 500-540 rev / min mode, idle for about 5 minutes.

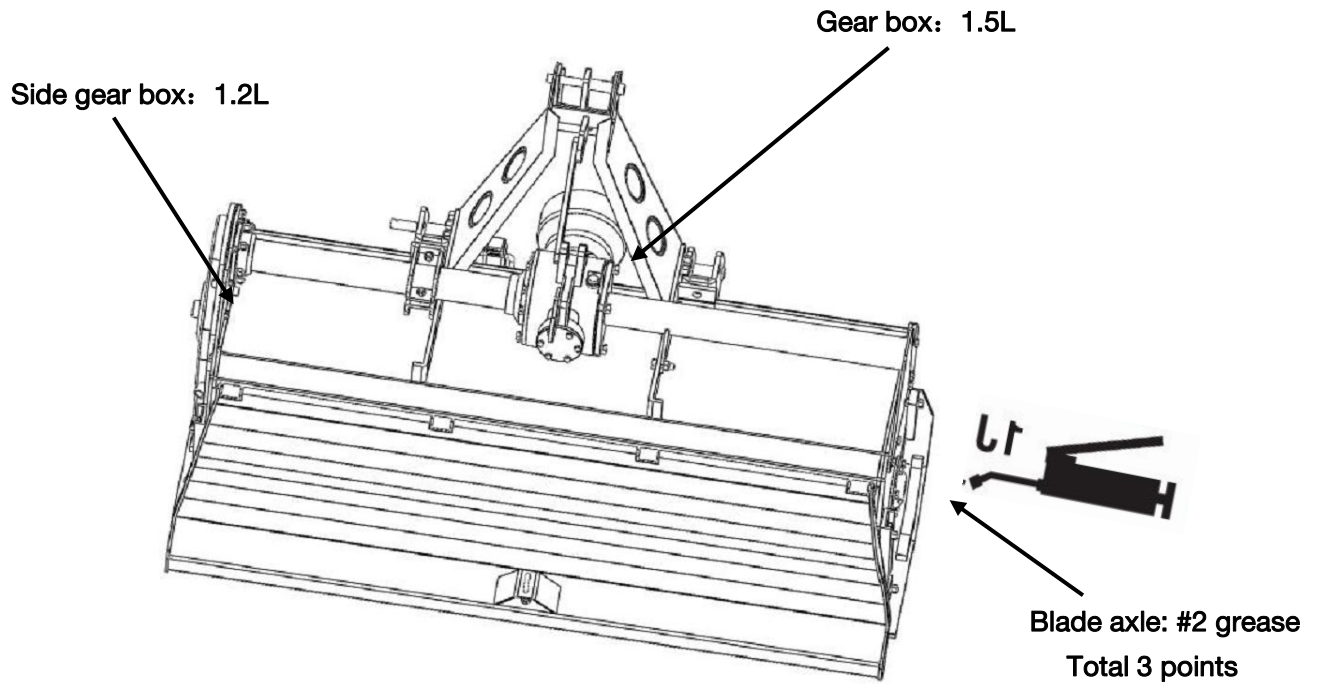
If the drive system has a problem, you can refer tractor manual investigation.

2. Check the tractor hydraulic system

Operate tractor three-point suspension lift handle and hydraulic output handle, lifting and turning the machine to ensure no problems.

If you have questions, please contact the tractor dealer.

LUBRICATION POINTS SUMMARY



- Fuel and smear with clean oil
- Release the original gearbox oil when refueling.
- Designated parts have been oiling, please confirm before use.

⚠ Noted !

Change the oil in gearbox after the new hoe put in use after 50 hours

Make routine inspection per 50 hours

Gear oil and grease oil information

Lubrication points	Oil #	Change time
Gearbox	SAE90 GL-5	300 hours/season
Blade axle nozzle	2# grease	Before use

OPERATING ESSENTIALS

⚠ Danger

- Don't touch blade when in operation, injuries may occur.
- In high-speed rotating operation, the stone will fly out, take close attention to yourself and the problem around.

⚠ Warning

- Exceed the PTO speed may cause injury accident, make sure to operate within the specified speed.
- Keep low-speed operation in tilt ground.

Note the front and surroundings while driving,

1. Attentions during in use

1. When start job, lift the rotary tiller, make sure accelerate the blade axle to the rated speed, and then drop the tiller until the blade buried to the desired depth. Do not accelerate the shaft or drop the tiller after buried the blade, to avoid overloading the tractor or damaging the blades.
2. Within the job, should try to drive slowly, so that can guarantee the work quality, crushing clouds and reduce mechanical wear and tear, pay attention to whether there is any noise or metal percussion sounds, and observe the pulverizes, deep tillage situations, if there is any exception should immediately stop work and check, after the exclusion can continue operations.
3. Stop work when turn a corner, raise the tiller until the blade off the ground, and reduce tractor throttle to avoid damage to the blade. When raise rotary tiller, make sure the universal -joint tile angle less than 30 degrees, it may cause noise if over the degrees and then premature wear or damage
4. When drive in reverse, crossing the ridge and transfer to other land, should raise the tiller to the highest position, and cut off the power to avoid any damages, if more to far away , make sure to use lock device fix the machine well.
5. After working, should maintenance the machine, remove dirt and debris, check the connection fastening case, each point lubricant filling oil, to prevent aggravating wear.

2. Rotary tiller adjustment

1. Side adjustment, park the tractor with rotary hoe in flat ground, drop the rotary hoe until the blade 5cm from the ground, check the the tip for sides blades have the same distance to ground, in order to ensure the blade axle in straight level, tillage depth evenly.
2. Front and rear adjustment. When drop the rotary tiller to the required depth, observe universal joint angle and the rotary tiller angle is in a near horizontal position. If the angle is too large, adjust the rod, so that rotary hoe in the horizontal position.
3. Lifting height adjustment. Rotary job, angle does not allow more than 10 degrees, When drive in reverse, the angles are not allowed more than 30 degrees. Pay special attention when lifting. For increased again rotary tiller, the universal joint power should be removed.

OPERATING FINISH

1. Seiri and check after operating

- (1) Should organize and clean the rotary machine after the operation of rotary machines, remove the grass clippings, dirt during the job.
- (2) After using a rotary tiller should be careful to check some of the parts can be damaged, if parts need to be replaced, should also pay attention to cut off all the power, turn off the tractor firstly.
- (3) For the most easily damaged parts must be carefully checked immediately so as not to affect the next use. Particular pay attention to the blades, generally three methods of replacement: outward, inward turn, a mixed installation, to respond to different working environment, pay attention to distinguish; adjust blades and note blade axle speed

2. Separate from the tractor

- (1) The PTO drive shaft ends will be removed from the tractor and rotary tiller end.
- (2) Set flat rotary tiller, separate the tractor suspension with 3-point hitch from rotary tiller.

3. Storage

When machine will be placed for a long time, make sure to inspect parts , add oil , and make dust-proof work.

MAINTENANCE SCHEDULE

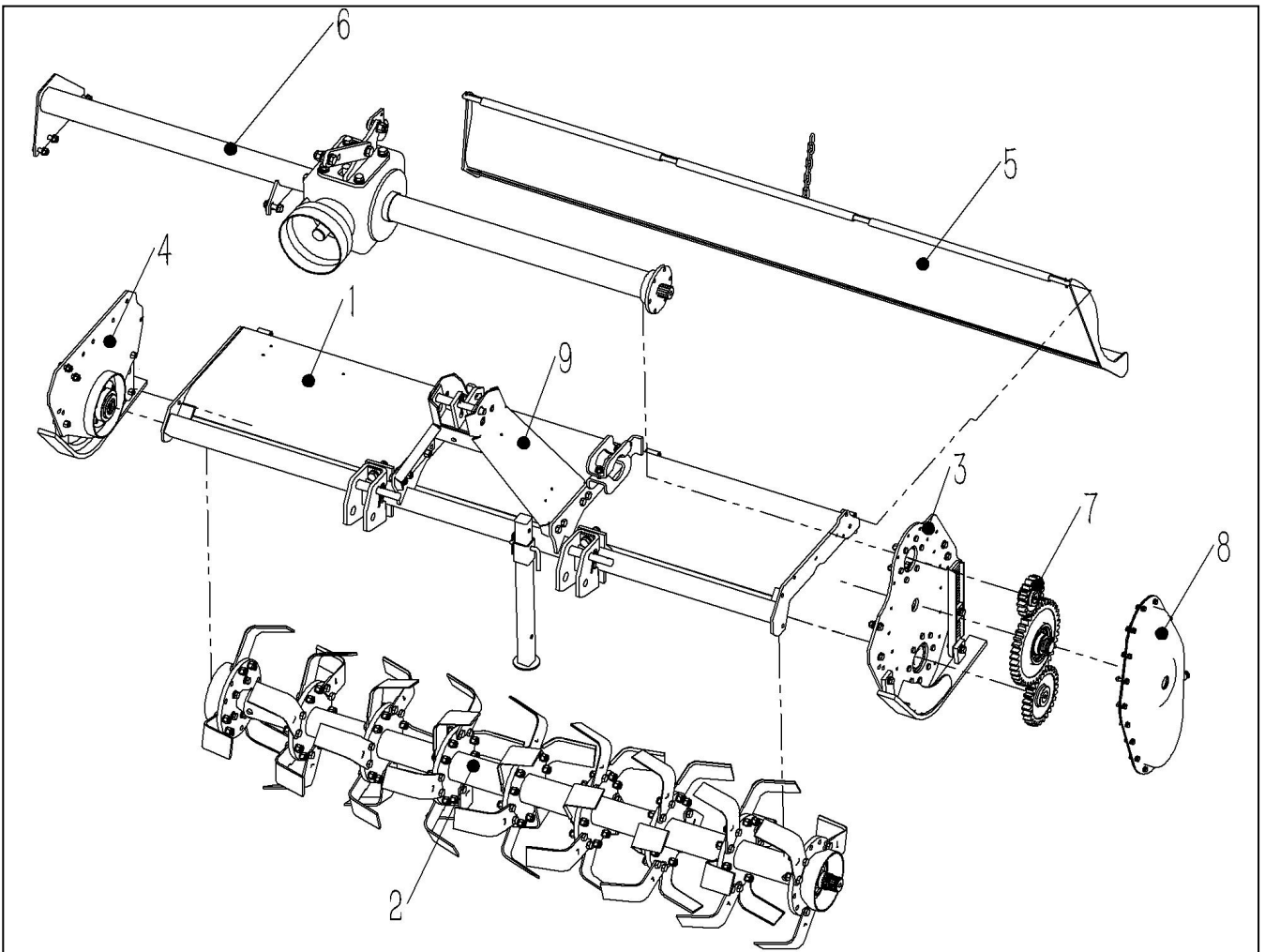
Inspection unit list	Inspection time
Blade	Before/in/post the job
Cutter	Before/Post the job
Greasing	59 hours/times
Bolts or nuts loose	1 hour in the new use
Gear oil	50hours in the new use, and per 300hours or seasonal conduct after changing oil

TROUBLESHOOTING

PROBLEM	PROBABLE CAUSE	SOLUTION
Abnormal sound or abnormal	<ol style="list-style-type: none"> 1. Loose blade bolt 2. Loose cutter bolts 3. Incorrect oil 4. Gear, bearing damage 5. Overload or soil hardness is high 	Tighten the bolts Change Oil Replace damaged Parts Readjust tillage depth
uneven soil after tilling and sowing	Adjusting plate position was not coordinated well	Coordinate well the adjusting plate position
Blade axle not work or rotate slowly	<ol style="list-style-type: none"> 1. Parts installation errors 2.Excessive debris wrapped on the blade axle 	Check the blade axle installation Clear debris
Curved blade	1.Not replace the deformed blade	Replace the blades in time
Coupling abnormal sound	<ol style="list-style-type: none"> 1. No Oil 2. Overload angle is too large 	Add lubrication Proper use according to Manual

EXPLODED VIEW & PARTS LIST

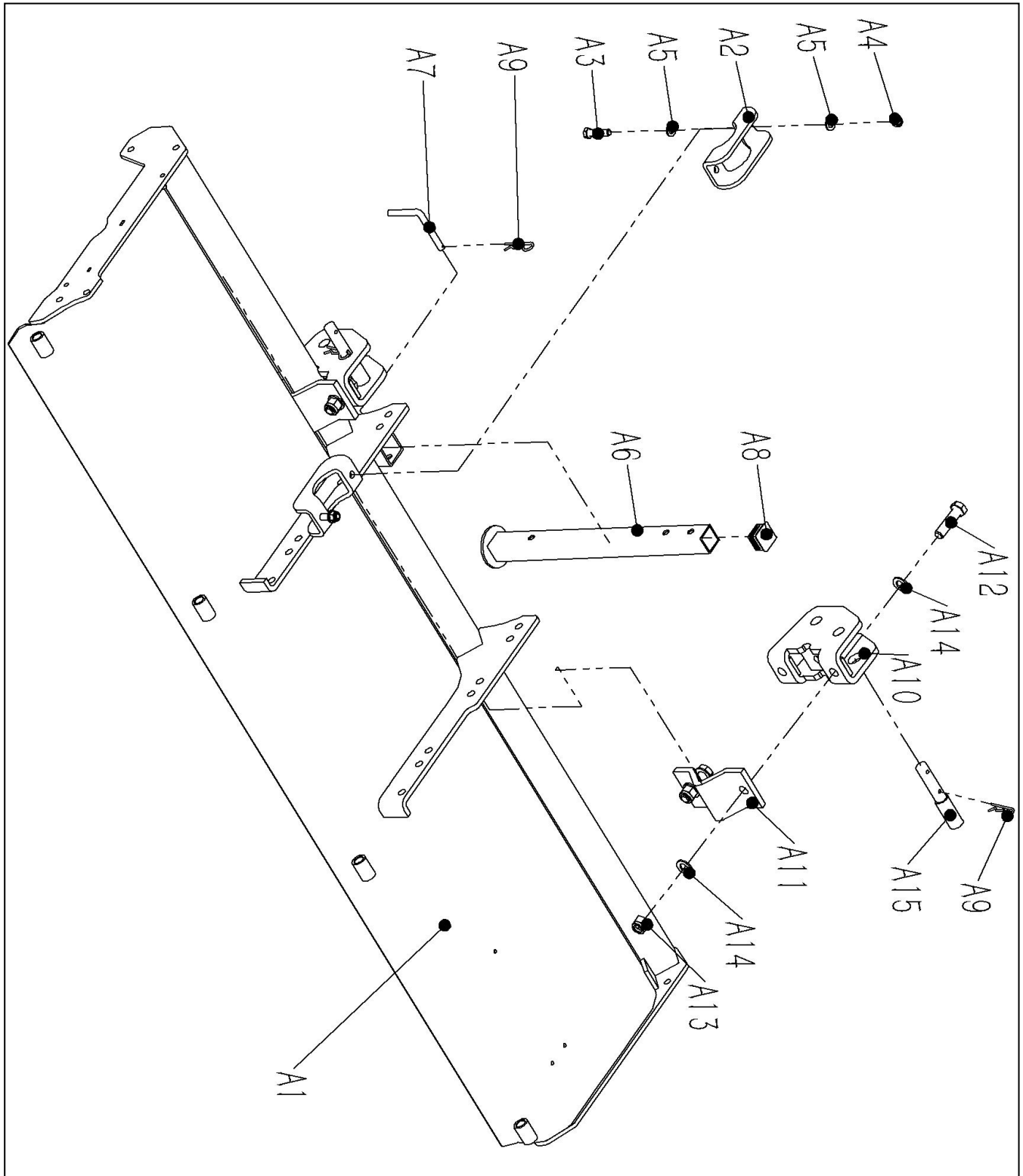
1. Main-frame assembly



PARTS LIST

Ref.No.	Description	Qty	Ref.No.	Description	Qty
1	Hood assembly	1	6	Gearbox assembly	1
2	Blade axle assembly	1	7	Side drive assembly	1
3	Left panel assembly	1	8	Gearbox housing assembly	1
4	Right panel assembly	1	9	Suspension assembly	1
5	Baffles	1			

2. Hood assembly



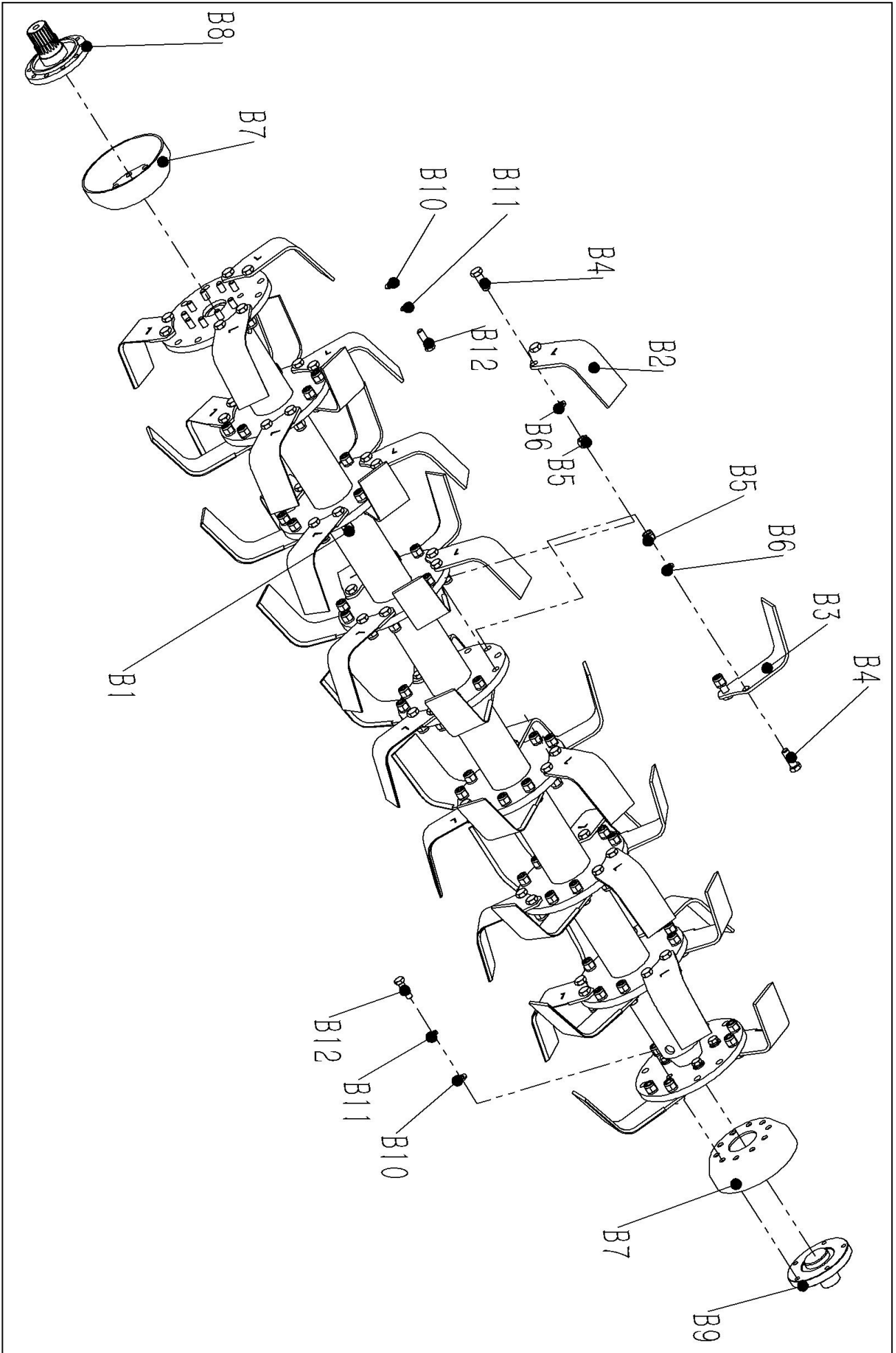
PARTS LIST

Ref.No.	Description	Qty	Ref.No.	Description	Qty
A1	Panel hood	1	A9	R pin 4	3
A2	Extension tube plate	1	A10	Hitch bracket-lower	2
A3	Full-thread hexagon bolts M12x50	2	A11	Lower hanging platen	2
A4	Locknut M12	2	A12	Hexagon head bolts M18x70	4
A5	Plain washer Ø12	4	A13	Locknut M18	4
A6	Raker	1	A14	Plain washer Ø18	8
A7	Raker pin	1	A15	Hitch pin-lower	2
A8	Square pipe plug 41x41	1			

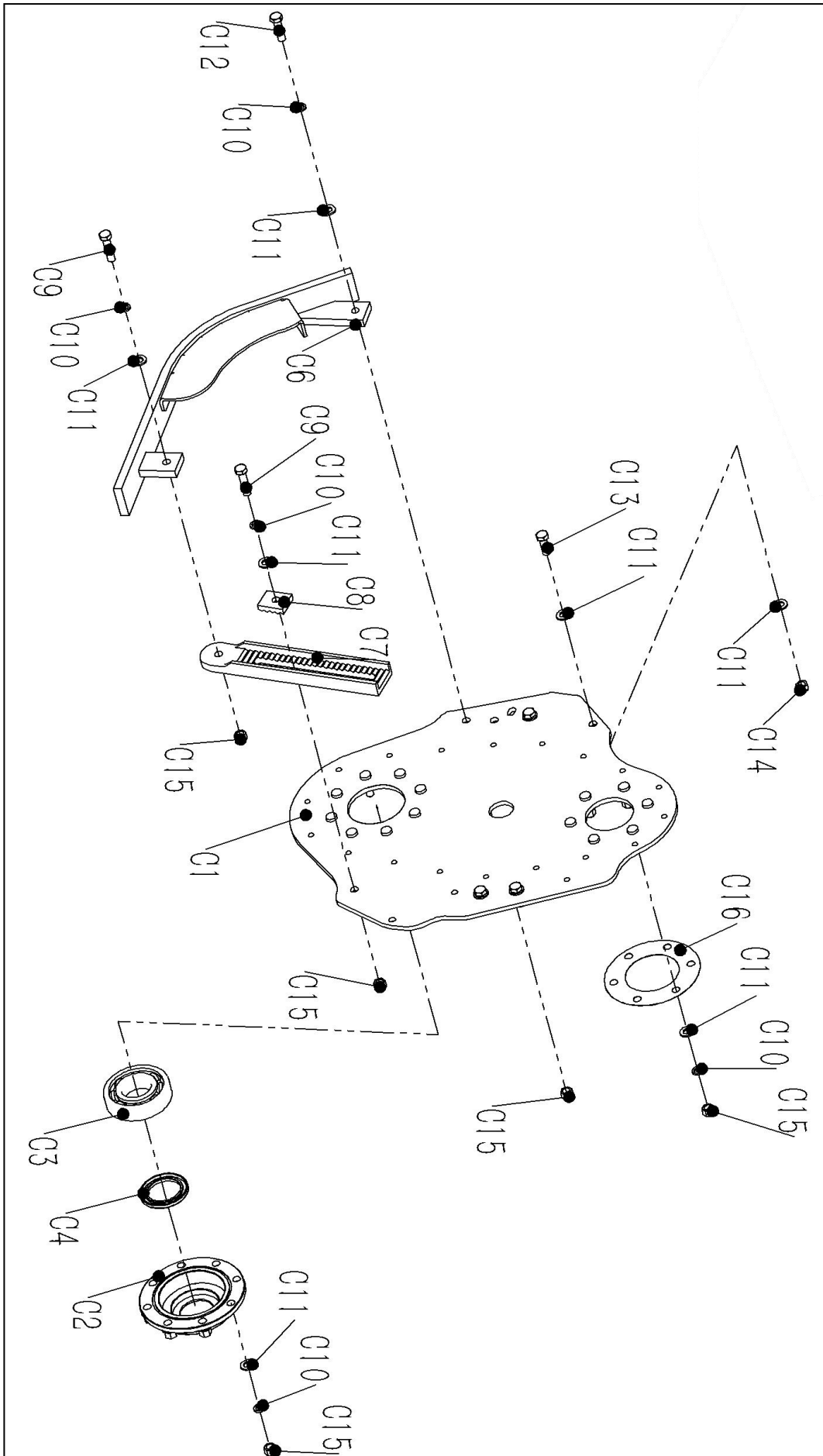
3. Blade axle assembly

PARTS LIST

Ref.No.	Description	Qty	Ref.No.	Description	Qty
B1	Blade axle	1	B7	Dust cover	2
B2	Right blade	24	B8	Transmission gear	1
B3	Left blade	24	B9	End cover	1
B4	Full-thread hexagon bolts (fine pitch) M14x1.5x40	96	B10	Plain washer Ø12	15
B5	Locknut (fine pitch) M14x1.5	96	B11	Spring washer Ø12	15
B6	Spring washer Ø14	96	B12	Full-thread hexagon head bolts M12x40	15



4. Left Panel Assembly



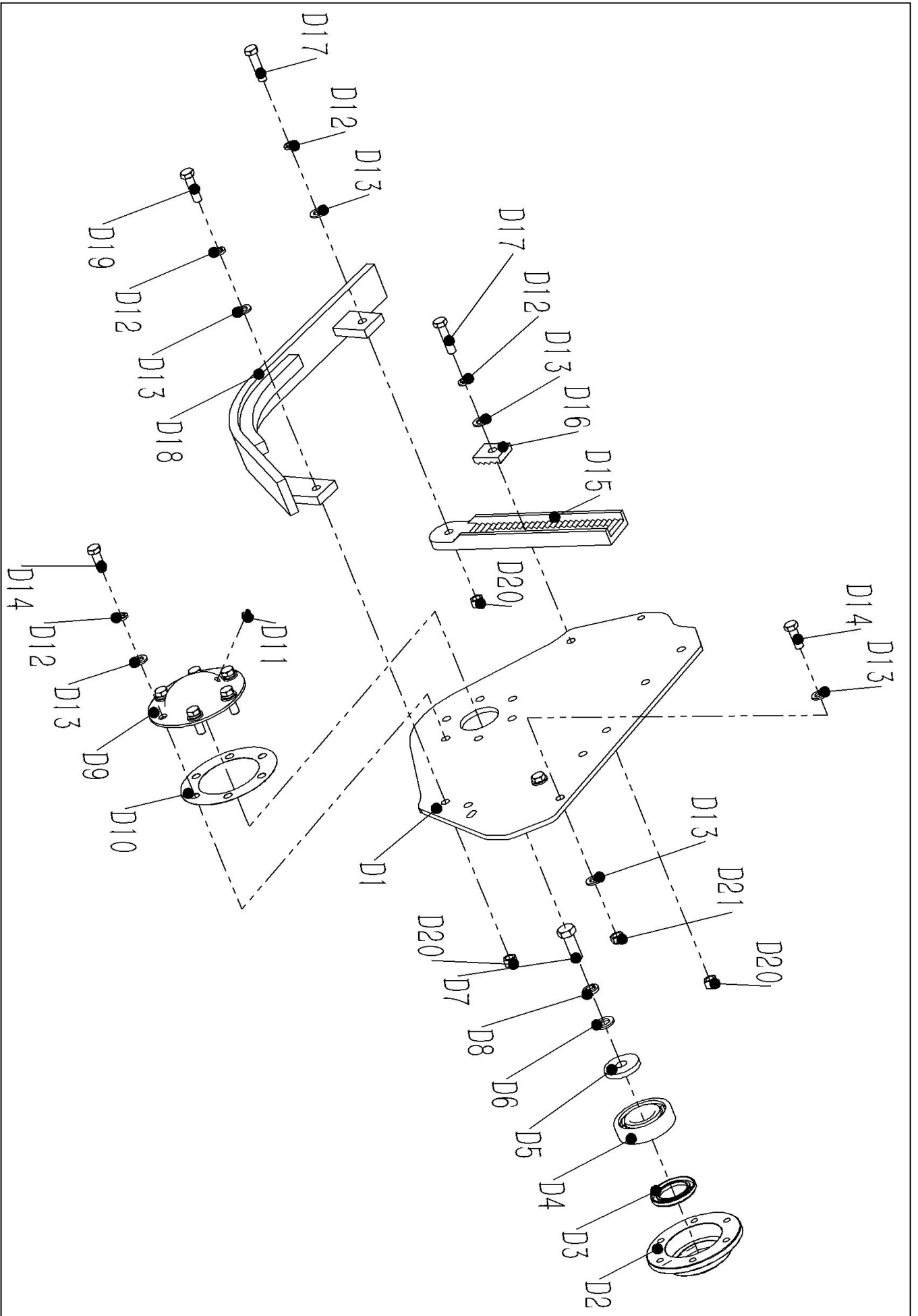
PARTS LIST

Ref.No.	Description	Qty	Ref.No.	Description	Qty
C1	Side plate-L	1	C9	Full-thread hexagon bolts M12x50	2
C2	Bearing seat	1	C10	Spring washer Ø12	17
C3	Deep groove ball bearing 6310	1	C11	Plain washer Ø12	25
C4	Shaft seal FB-55x80x8	1	C12	Full-thread hexagon bolts M12x45	1
C5	O-ring 125x3	1	C13	Full-thread hexagon bolts M12x35	4
C6	Skid plate-L	1	C14	Locknut M12	4
C7	Adjustable plate	1	C15	Hexagon nuts M12	17
C8	Small gear plate	1	C16	Sheet gasket	1

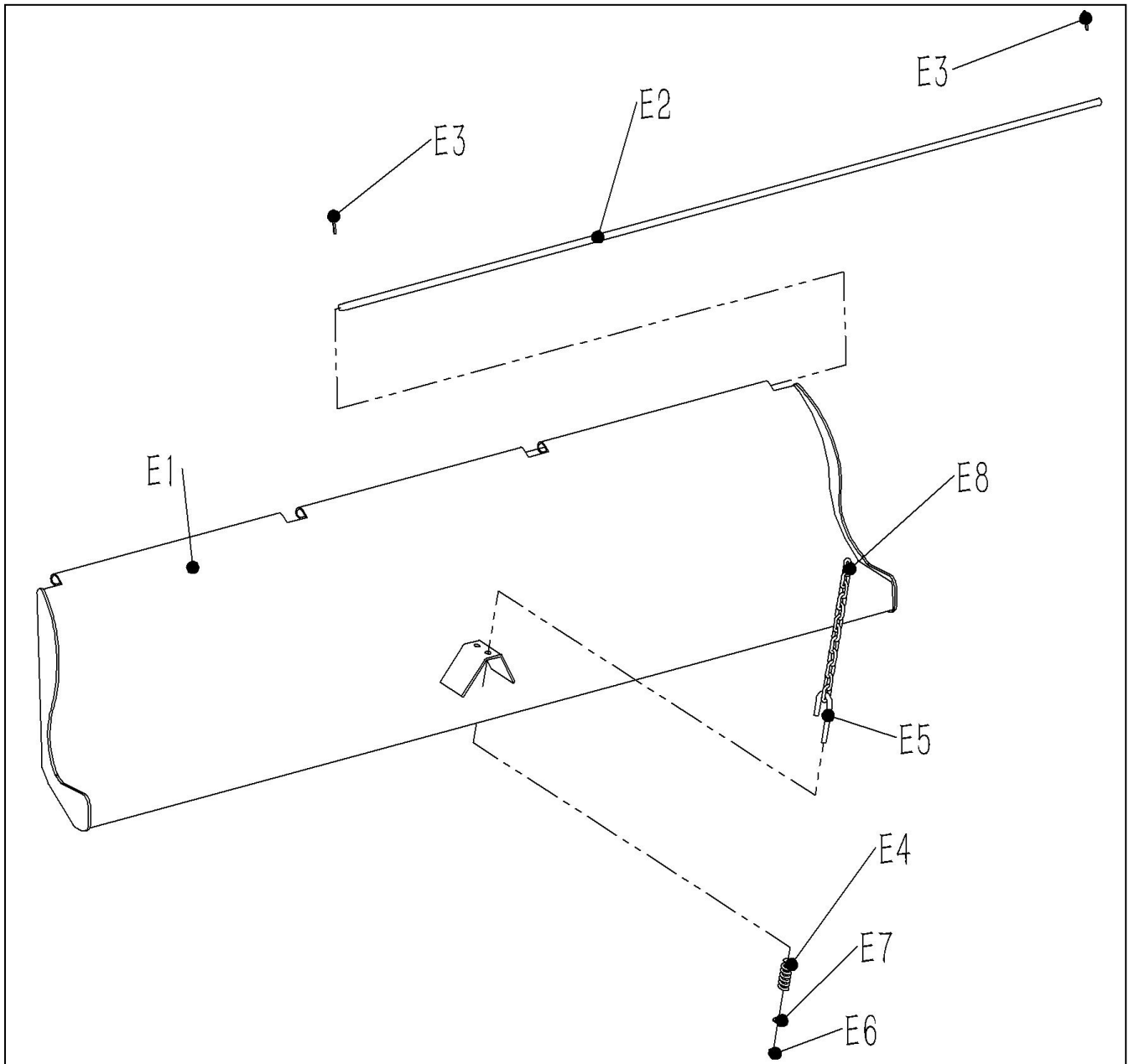
5. Right Panel Assembly

PARTS LIST

Ref.No.	Description	Qty	Ref.No.	Description	Qty
D1	Slide plate-R	1	D12	Spring washer Ø12	9
D2	Bearing seat	1	D13	Plain washer Ø12	13
D3	Shaft seal FB-45x70x8	1	D14	Full-thread hexagon bolts M12x35	8
D4	Deep groove ball bearing 6308	1	D15	Adjustable plate	1
D5	Washer	1	D16	Small gear plate	1
D6	Plain washer Ø16	1	D17	Full-thread hexagon bolts M12x50	2
D7	Full-thread hexagon bolts M16x45	1	D18	Skid plate-R	1
D8	Spring washer Ø16	1	D19	Full-thread hexagon bolts M12x45	1
D9	Cover plate	1	D20	Hexagon nuts M12	3
D10	Sheet gasket	1	D21	Locknut M12	2
D11	Grease nipple M10x1	1			



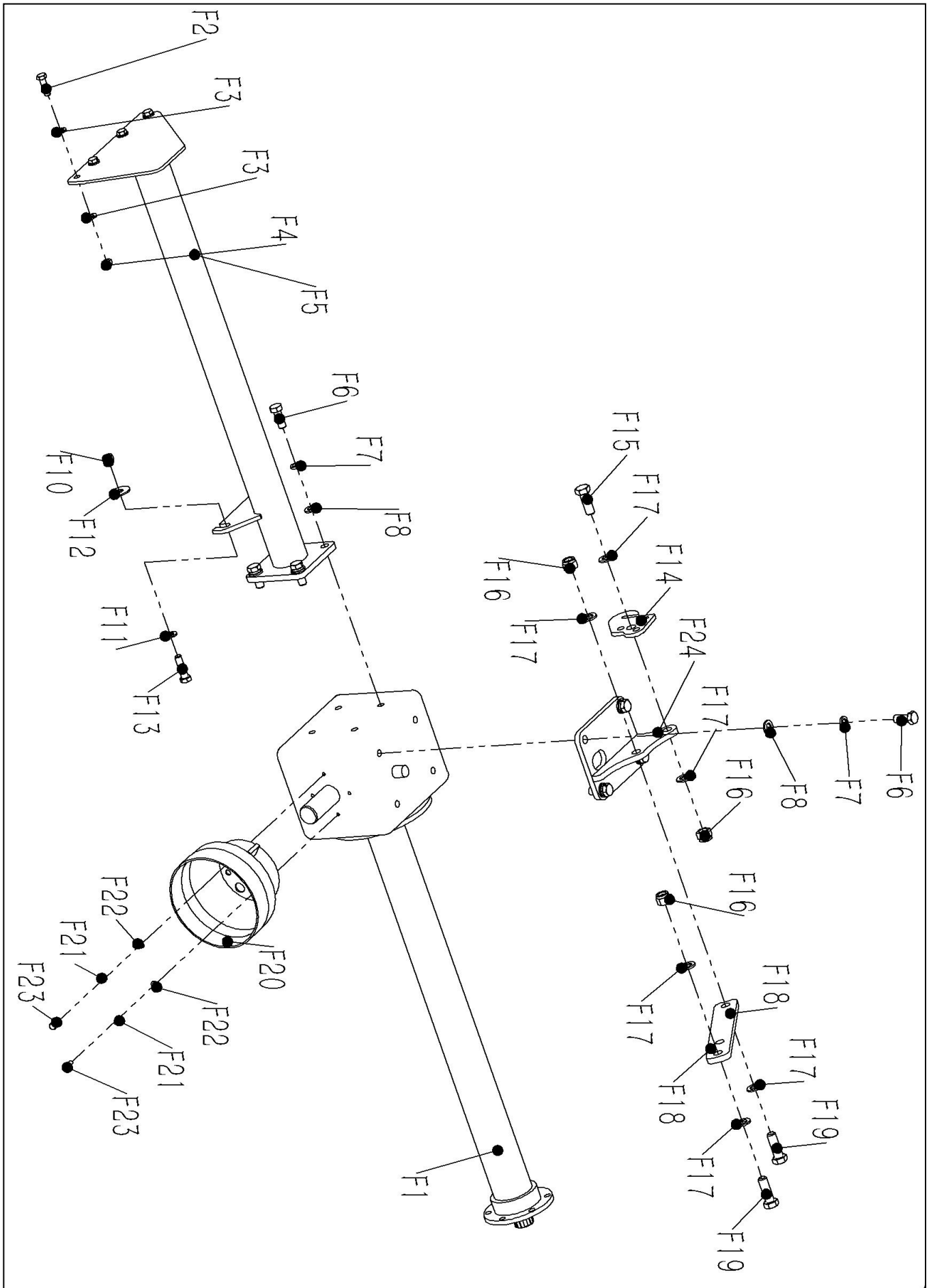
6. Baffles



PARTS LIST

Ref.No.	Description	Qty	Ref.No.	Description	Qty
E1	Rear baffle plate	1	E5	PTO shaft hook	1
E2	Baffle plate shaft	1	E6	Locknut M10	1
E3	Split pin 4x28	2	E7	Plain washer Ø10	1
E4	Pressure spring	1	E8	Galvanized chain 8x30x28	1

7. Gearbox assembly



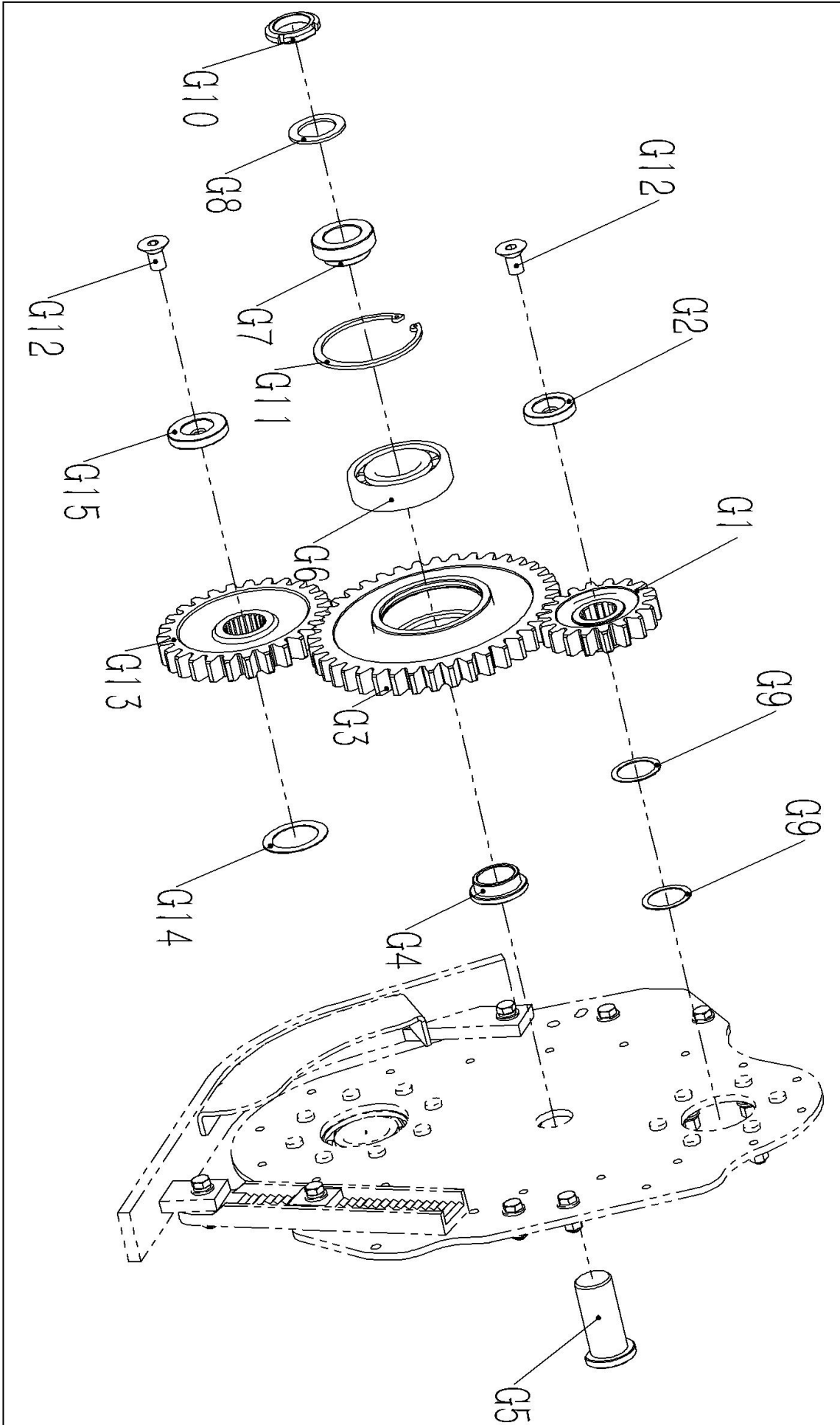
PARTS LIST

Ref.No.	Description	Qty	Ref.No.	Description	Qty
F1	Gear box	1	F13	Full-thread hexagon bolts M14x50	1
F2	Full-thread hexagon bolts M12x40	4	F14	Chain hanger	1
F3	Plain washer Ø12	8	F15	Full-thread hexagon bolts M18x50	1
F4	Locknut M12	4	F16	Locknut M18	3
F5	Reinforcement tube	1	F17	Plain washer Ø18	6
F6	Full-thread hexagon bolts M16x40	8	F18	Pulling plate	1
F7	Spring washer Ø16	8	F19	Full-thread hexagon bolts M18x55	2
F8	Plain washer Ø12	8	F20	Guard	1
F9	Full-thread hexagon bolts M14x40	1	F21	Spring washer Ø8	2
F10	Locknut M14	2	F22	Plain washer Ø8	2
F11	Plain washer Ø14	2	F23	Full-thread hexagon bolts M8x16	2
F12	Large plain washer Ø14	2	F24	Connecting plate	1

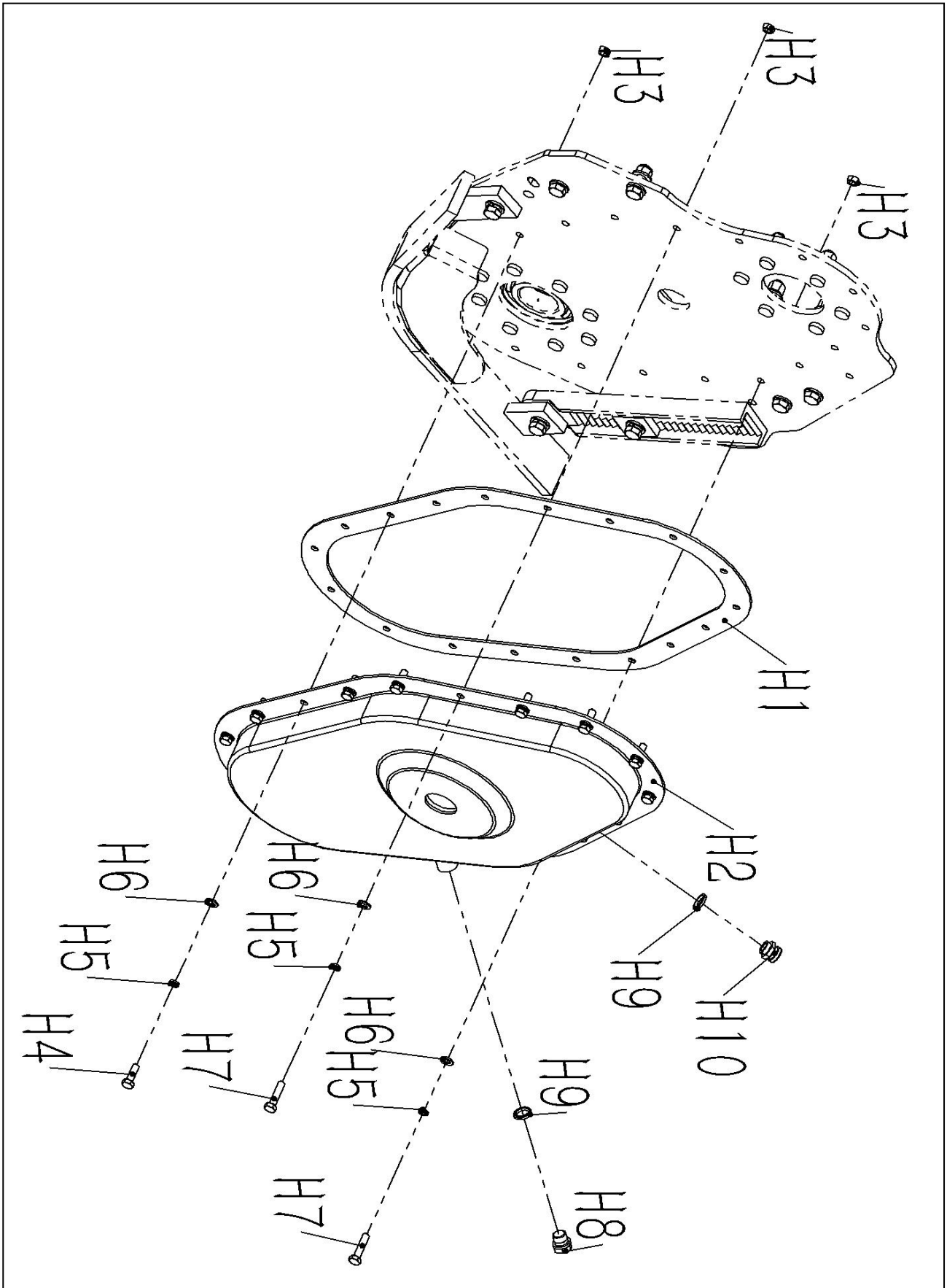
8. Side drive assembly

PARTS LIST

Ref.No.	Description	Qty	Ref.No.	Description	Qty
G1	Gear	1	G9	Washer	2
G2	Gear plate	1	G10	Round nut M39x1.5	1
G3	Gear	1	G11	Retaining rings for bores 110-A	1
G4	Bush	1	G12	HSCS-countersunk M16x30	2
G5	Shaft foe mid gear	1	G13	Gear	1
G6	Cylinder roller bearing NUP310E	1	G14	Adjustable plate	1
G7	Bush	1	G15	Gear washer	1
G8	Washer	1			



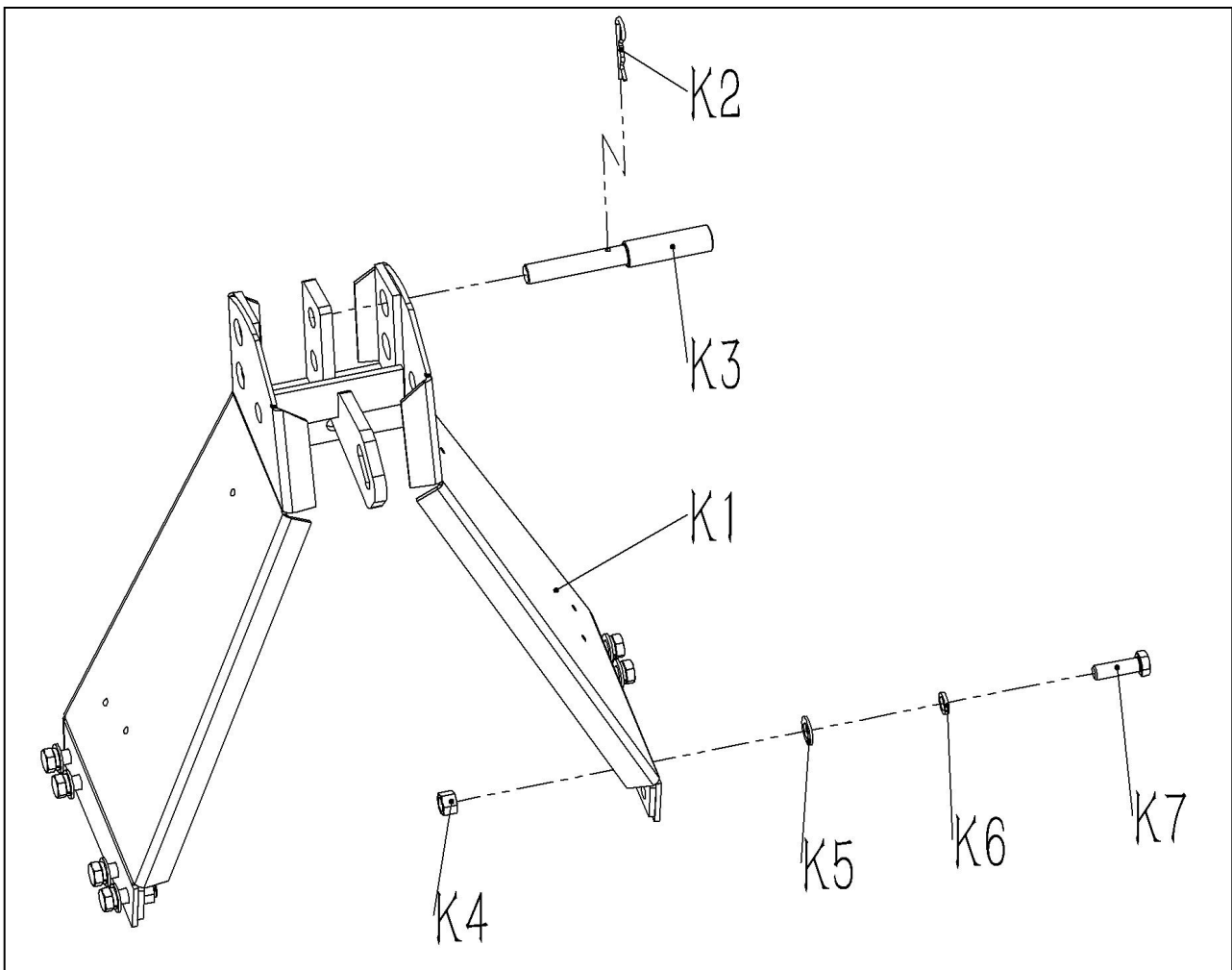
9. Side gearbox housing assembly



PARTS LIST

Ref.No.	Description	Qty	Ref.No.	Description	Qty
H1	Sheet gasket	1	H6	Plain washer Ø8	18
H2	Gearbox cover	1	H7	Full-thread hexagon bolts M8x35	2
H3	Hexagon nuts M8	18	H8	Outer hexagon plug M16x1.5	1
H4	Full-thread hexagon bolts M8x25	16	H9	Combined sealing gaskets 16.4x22x2.5	2
H5	Spring washer Ø8	18	H10	Grease nipple M16x1.5	1

10. Side gearbox housing assembly



PARTS LIST

Ref.No.	Description	Qty	Ref.No.	Description	Qty
K1	Hitch bracket	1	K5	Plain washer Ø14	7
K2	R pin 4	1	K6	Spring washer Ø14	7
K3	Hitch pin-upper	1	K7	Full-thread hexagon bolts M14x45	7
K4	Hexagon nuts M14	7			