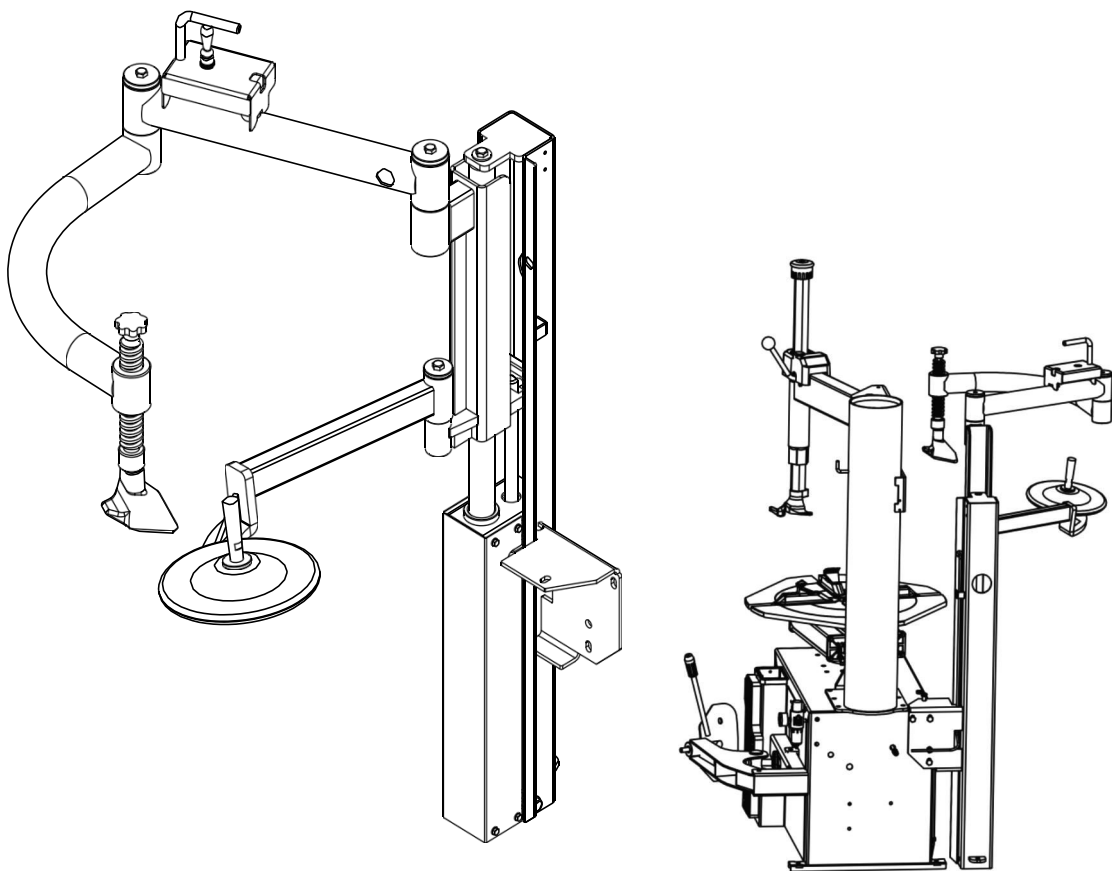


PNEUMATIC ASSIST ARM

for TC24 Tire Changer

MODEL:TMG-PAT24

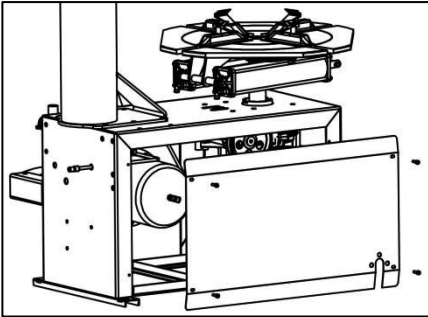
- Please read the product manual completely before assembly
- Check against the parts list to make sure all parts are received
- Wear proper safety goggles or other protective gears while in assembly

Missing parts or questions on assembly?

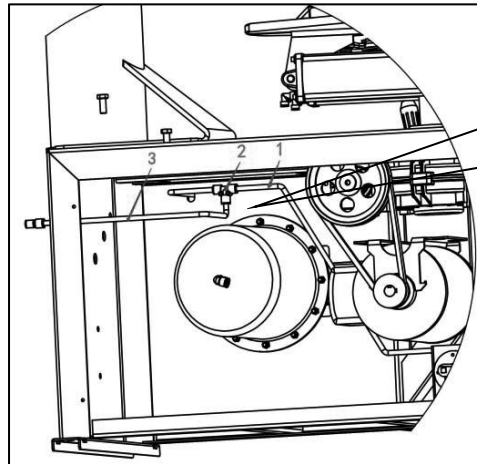
Please call: 1-877-761-2819 or email: cs@tmgindustrial.com

Do not return the product to dealer, they are not equipped to handle your

Installation Instructions

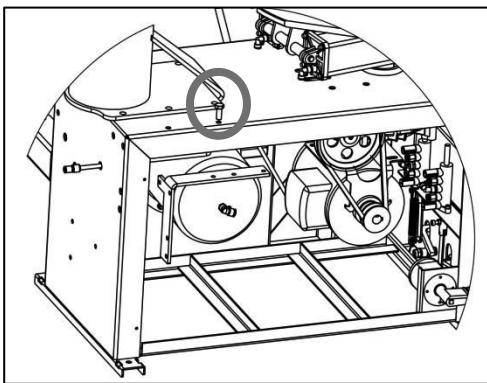


Step1: Open the side plate.

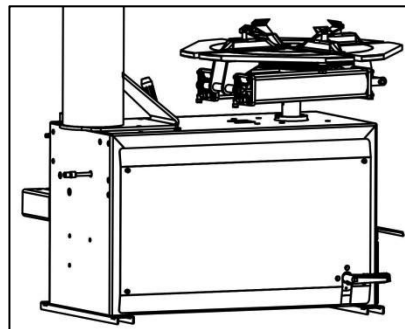


Step2:

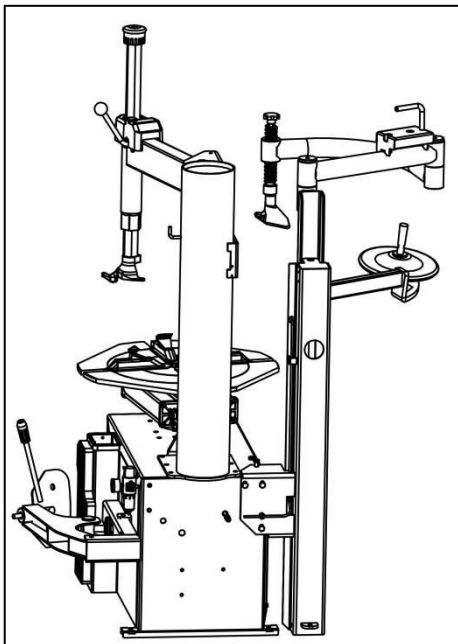
- ① Cut the air pipe 1 above the bead breaker cylinder.
- ② Connect air pipe 1 and air pipe 3 with a tee-junction.
- ③ Put the air pipe 3 through the hole at the back of box.
- ④ At the back of box, connect the air pipe 3 with a straight joint.



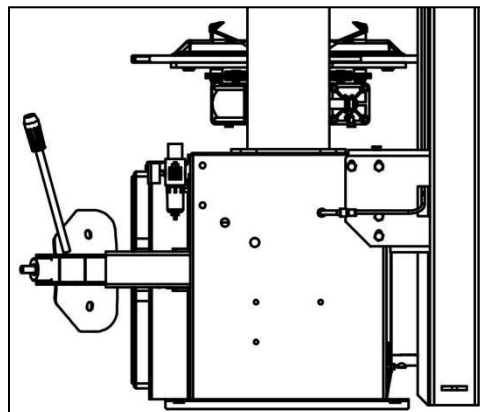
Step3: Fix the L-shape plate inside the box with just one screw which is shown inside a circle in the picture.



Step4: Close the side plate.

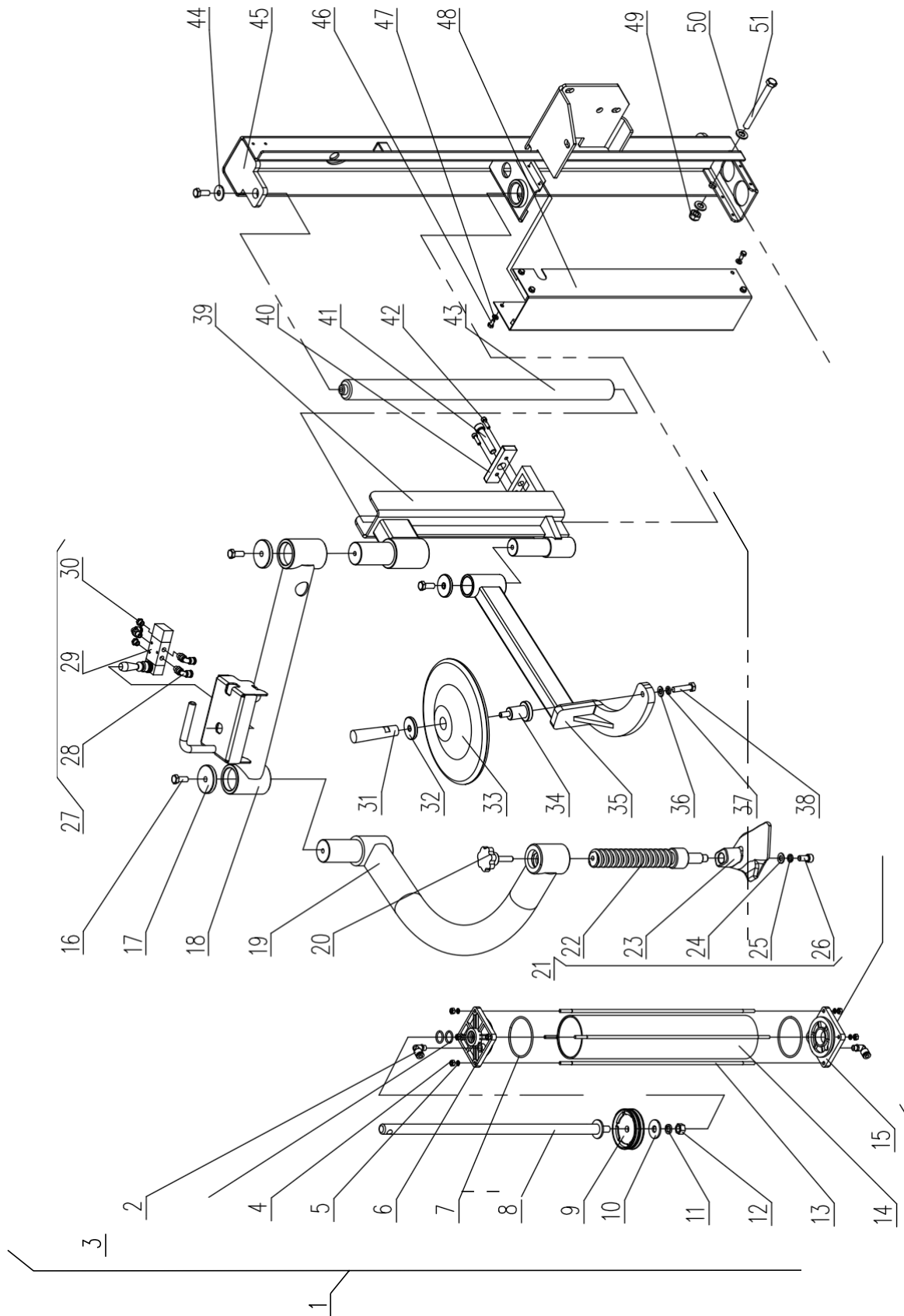


Step5: Fix the PAT24 Pneumatic Assistant Arm to the machine box, then screwed tightly.



Step6: Insert the air pipe of PAT24 Pneumatic Assistant into the straight joint that was at the back of the box.

Explosion diagram



PART#	DESCRIPTION	QTY	PART#	DESCRIPTION	QTY
1	cylinder 80 assembly	1	27	lifting valve assembly	1
2	right angle terminal of quick insert ϕ 8 G1/8"	2	28	right angle terminal of quick insert ϕ 6 G1/8"	3
3	o-ring seal ϕ 20X2.65	2	29	hand lifting valve	1
4	hexagon nut M6	8	30	metal silencer	2
5	spring washer 6	8	31	handle on the table holding the tire of the side column	1
6	cylinder head of the side column 80	1	32	sleeve gland on the arm holding the tire of the side column	2
7	o-ring seal ϕ 80X3.1	2	33	table holding the tire	1
8	piston rod of cylinder under the table	1	34	spindle holding up the tire	1
9	piston of the side column 80	1	35	welding of the frame holding the tire of the left arm	1
10	the big washer 12	2	36	flat washer class A 10	1
11	spring washer 12	1	37	spring washer 10	1
12	hexagon nut M12	1	38	hexagon bolt M10X40	1
13	cylinder screw of the side column	4	39	welding of sliding sleeve of the lifting arm	1
14	cylinder barrel of the side column 80	1	40	slide block	1
15	cylinder bottom of the side column 80	1	41	hexagonal bolt of cylindrical head M12X60	1
16	hexagonal head bolt M10X25	4	42	hexagonal bolt of cylindrical head M6X20	2
17	gland of square arm shaft of the side column pressing tire	2	43	lifting rod of the left column	1
18	welding for the left round arm of pressing tire	1	44	the big washer 10	1
19	welding for the bending arm of pressing tire	1	45	vertical groove welding of the left column	1
20	screw nut of plum blossom M10	1	46	hexagonal bolt M6X12	8
21	assembly for tread screw of pressing tire	1	47	flat washer class A 6	8
22	tread screw of pressing tire	1	48	cylinder protected tank of the left column	1
23	pressing tire block of horseshoe shaped	1	49	hexagon lock nut M12	1
24	class A of the flat gasket 10	1	50	flat washer class A 12	2
25	spring washer 10	1	51	hexagonal bolt M12X120	1
26	screws with hexagon socket cylinder head M10X20	1			