

**VIBRATORY ROLLER**

Model:TMG-MVR10



- Please read the product manual completely before assembly
- Check against the parts list to make sure all parts are received
- Wear proper safety goggles or other protective gears while in assembly

Missing parts or questions on assembly?

Please call: 1-877-761-2819 or email: [cs@tmgindustrial.com](mailto:cs@tmgindustrial.com)

Do not return the product to dealer, they are not equipped to handle your requests

# **CONTENTS**

<b>Preface</b> .....	<b>1</b>
<b>Introduction</b> .....	<b>1</b>
<b>Hazards &amp; risks</b> .....	<b>2</b>
<b>Operating the machine</b> .....	<b>3</b>
<b>Transportation and storage</b> .....	<b>7</b>
<b>Maintenance</b> .....	<b>8</b>
<b>Specification</b> .....	<b>9</b>
<b>Troubleshooting</b> .....	<b>10</b>
<b>Maintenance date list</b> .....	<b>11</b>
<b>Spare parts manual</b> .....	<b>12</b>

# **PREFACE**

Thank you very much for that you have purchased the products.

This operation manual will tell you how to correctly operate and maintain your machine. Before using the machine, please read the operation manual thoroughly to guarantee the correct operation. Following the operation requirements in the operation manual will make that your machine is in the best operation state so as to extend the life of the set. For you own safety and protection form injury, carefully read, understand and observe the safety instructions described in this manual.

Keep this manual or a copy of it with the machine. If you lose this manual or need an additional copy, please contact the company. This machine is built with user safety in mind; however, it can present hazards if improperly operate and serviced. Follow operating instructions carefully! If you have any suggestion and problem related to the operation manual, please contact the company or the agency.

With the increasing improvement and enhance of the products made by the company, there may be some differences between the contents described in the operation manual and the practical products, it is our desire that the users will pay attention to the differences.

# **INTRODUCTION**

## **General Safety Instructions for the Operation of Power Equipment**

Our goal is to produce power equipment that helps the operator work safely and efficiently. The most important safety device for this or any tool is the operator. Care and good sense are the best protection against injury. All possible hazards cannot be covered here, but we have tried to highlight some of the important items, individuals should look for and obey Caution, Warning and Danger signs placed on equipment, and displayed in the workplace. Operators should read and follow safety instructions packed with each product.

Learn how each machine works. Even if you have previously used similar machines, carefully check out each machine before you use it. Get the “feel” of it and know its capabilities, limitations, potential hazards, how it operates, and how it stops.

### **Production Introduction**

Used to ram the asphalt surface and gravel, sandy soil. With small operating radius, make sure it can work within small area.

## **HAZARDS AND RISKS**

NEVER allow any person to operate equipment without adequate instruction.

ENSURE all operators read, understand and follow the operating instructions.

SERIOUS INJURY may result from improper or careless use of this machine.

### **! MECHANICAL HAZARDS**

DO NOT operate the machine unless all protective guards are in place

KEEP hands and feet clear of rotating and moving parts as they will cause injury if contacted.

ENSURE that the spark plug ignition lead is disconnected before removing or refitting the diamond core drill bit.

ENSURE the machine is stable by setting up on level terrain and the machine will not tip over, slide or fall while in operation or unattended.

DO NOT leave the machine in operation while it is unattended

BE CAREFUL not to come in contact with the muffler when the engine is hot, since it can cause severe burns.

ENSURE that the nut is locked tight before starting the machine.

ENSURE engine working in normal speed.

KEEP bystanders and animals clear of the work area.

ENSURE that repairs to the petrol motor and machine are carried out by COMPETENT personnel.

### **! FIRE & EXPLOSION HAZARDS**

PETROL is extremely flammable and explosive under certain conditions.

ENSURE that petrol is only stored in an approved storage container.

DO NOT refuel that motor while it is in operation or hot.

DO NOT refuel the motor in the vicinity of sparks, a naked flame or a person smoking.

DO NOT overfill the fuel tank and avoid spilling petrol when refueling. Spilled petrol or petrol steam may ignite. If spillage occurs, ensure that the area is dry before starting the motor.

ENSURE that the fuel tank cap is securely fitted after refueling.

## **! CHEMICAL HAZARDS**

DO NOT operate or refuel a petrol or diesel motor in a confined area without adequate ventilation.

CARBON MONOXIDE exhaust gases from internal combustion motor driven units can cause death in confined spaces.

## **! NOISE HAZARDS**

EXCESSIVE NOISE can lead to temporary or permanent loss of hearing.

WEAR an approved hearing protection device to limit noise exposure. As required by Occupational Health and safety regulations.

## **PROTECTIVE CLOTHING**

ALWAYS wear approved hearing protection, Protective dust mask, goggles, clothing and footwear may also be necessary.

WEAR snug fitting clothing and ensure no clothing, hair or jewelry can become entangled in the machine.

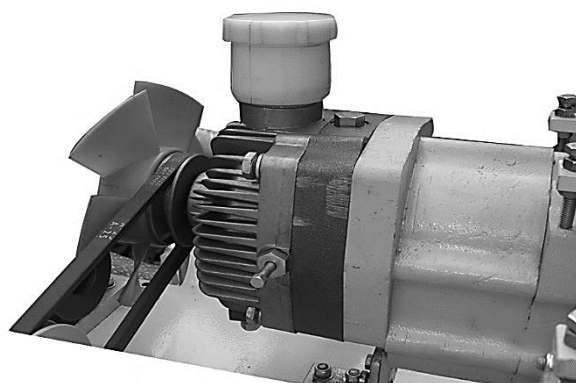
## **OPERATING THE MACHINE:**

### **PREPARATION BEFOR WORKING**

1. Adjust the handrail to fitted state.
2. Ensure the lock nut is tightened.

3. Check engine lubricating oil level. If the oil below the warning level, fill the lubricating oil SAE-40(summer) or SAE-30(winter). If the oil is dirty, change the oil. DO NOT start motor when lubricating oil is not enough or ineffective, since it can result in severe damage.

Check oil level of static hydraulic drive device. Ensure the oil level exceed bulge cup bottom 1cm. If oil level below the required line, drain the oil and fill the new oil. (advise use DTE-26, purity: 6 $\mu$ m)



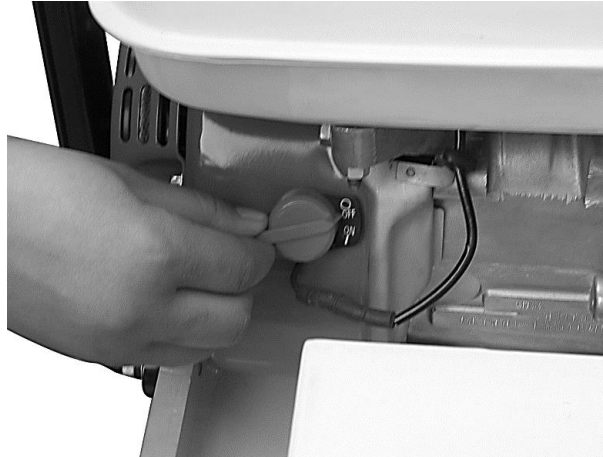
4. Check air cleaner.
5. Check park plug.
6. Check petrol level in petrol tank.

## OPERATING THE MACHINE

1. Starting the engine.  
Turn the walking control handrail to CENTRIC position.



Turn the fuel valve to the “ON” position.  
Turn the engine switch to the “ON” position.



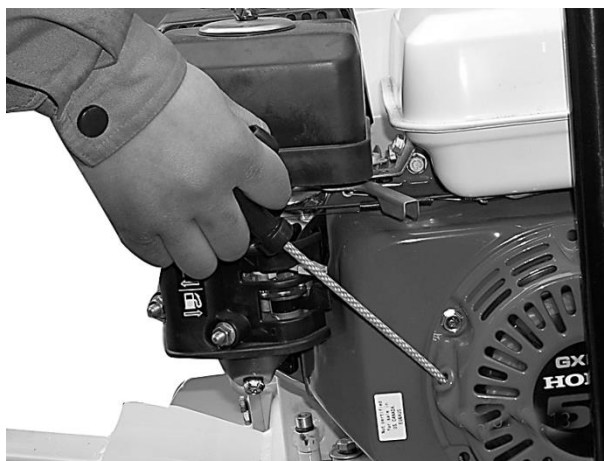
Move the throttle lever to the “SLOW” position.



Turn the choke level to the “CLOSE” position.



Pull the starter grip lightly until resistance is felt then pull briskly.



## 1. Adjusting the idle speed

IF the machine idle speed is too high or low, must adjust it.

Move the throttle lever to the “SLOW” position with the engine in well-balanced speed.

Adjust the throttle lever lock nut to get the standard idle speed ( $1440 \pm 150$ rpm).

## 2. Machine working



Turn the water level to fitting position.

Turn the throttle lever slightly to “FAST” position until get designed rotate speed, the machine start working.

Adjust walking control handrail can change the machine’s running orientation.





The machine vibratory is controlled by centrifugal clutch. It does not work when the motor rotate speed is low.

Ensure reducing the machine's running speed when it is climbing.

**WARNING:** Ensure the machine pre-hot 15 minute before start working, since it will result in severe damage if the pre-hot time is not enough.

#### 1. Stopping the machine

In the URGEN condition, only turn the engine switch to "OFF" position.

In the natural condition, place stopping the machine as follows:

Reduce engine rpm's and let it run for a short while.

**NOTICE:** Do not switch off engine directly from full power.

Shut off the engine by moving the throttle control lever through the detent to the off position. The engine will stop.

Close the fuel valve.

**Note:** For short-term operation interruption, it is only necessary to stop the engine.

**Finish the work, moving out the machine from work place in time.**

## **Transportation and storage:**

### **Transportation**

If the machine has been running, the machine will be hot. Allow it to cool before transporting.

Keep the engine level.

Drain the fuel oil when transport to longer distance or ground surface is uneven.

## **Storage**

Clean the machine on time.

Before storing the screed for a long period of time:

Close the valve and remove and empty sediment cup under carburetor.

Disconnect the fuel line from the carburetor. Place open end of fuel line into a suitable container and open fuel valve to drain fuel from tank.

**NOTICE:** Gasoline is extremely flammable. Drain fuel tank in a well ventilated area. DO NOT drain tank in an area with flames or sparks.

Loose the drain screw on the carburetor and drain any remaining fuel form carburetor.

Change the engine oil.

Remove the spark plug and pour approximately one tablespoon (30 ml) of clean engine oil into the cylinder. Crank the engine a few turns to distribute the oil to the inside of the cylinder walls.

Pull the starter rope slowly until resistance is felt and leave handle in this position. This ensures that the intake and exhaust valves are close.

**STORAGE THE MACHINE IN CLEAN AND DRY AREA!**

## **MAINTENANCE:**

2. Check the oil level every day. Inspect, clean and/or replace the spark regularly.
3. Inspect the water hose and its connections to ensure that they do not leak and spray water onto the engine.
4. Check the v-belt for tension, wear and that it is running true, adjust or replace

as required.

5. Check all fasteners for tightness as the machine is subject to vibration.

## **SPECIFICATION**

Type	TMG-MVR10
Power	5.5HP
Walking speed	1.5km/h
Drive method	hydraulic
Steel wheel size	∅ 400x560mm
Walking method	Bilateral
Exciting force	12kN
Exciting frequency	70Hz
Vibrating clutch method	Automatic
Climbing capacity	20%
Weight	286kg

# TROUBLESHOOTING

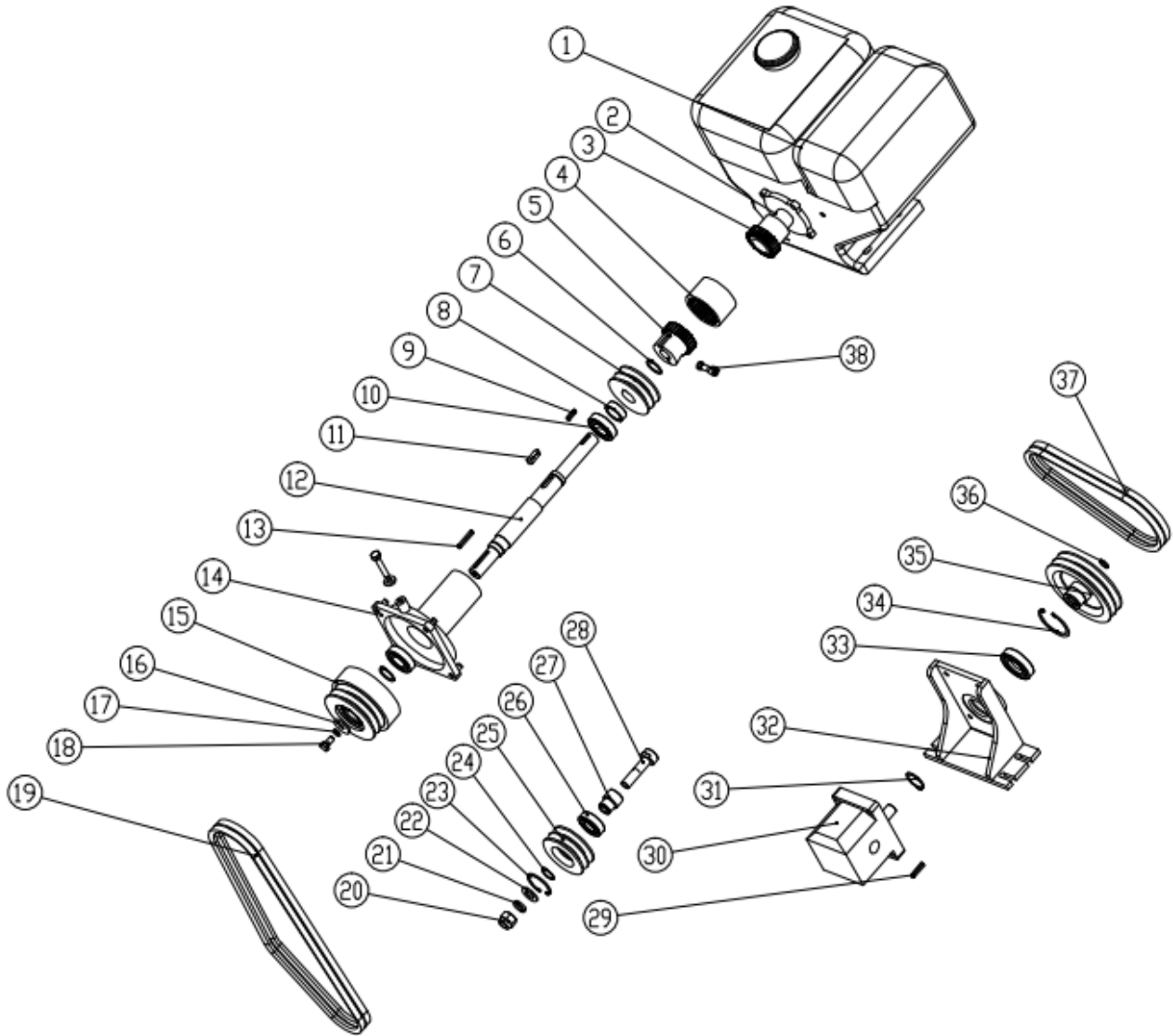
SYMPTOM	POSSIBLE CAUSES AND CORRECTION
Engine will not start.	<ul style="list-style-type: none"> <li>● Check the fuel supply</li> <li>● Check the crankcase oil level as an oil sensor device is fitted to these motors which prevents starting and stops the motor when the oil level is low.</li> <li>● Ensure the spark plug ignition lead is connected.</li> <li>● Check the carburetor jet and bowl to ensure they are clean.</li> </ul>
Engine stops.	<ul style="list-style-type: none"> <li>● Check the fuel supply.</li> <li>● Check that the fuel cock is turned on.</li> <li>● Check the condition of the air filter.</li> </ul>
Engine power is not enough.	<ul style="list-style-type: none"> <li>● Check the spark plug</li> <li>● Check the air cleaner</li> <li>● Check that the valve clearance is fitted.</li> <li>● Check the fuel supply.</li> </ul>
Blue smoke come from muffler	<ul style="list-style-type: none"> <li>● Check the fuel supply.</li> <li>● Check the air cleaner</li> <li>● Check the spark plug</li> </ul>
Machine is not rotating steady	<ul style="list-style-type: none"> <li>● Check the speed control instrument.</li> <li>● Check the carburetion instrument.</li> </ul>
Machine vibratory range is bigger	<ul style="list-style-type: none"> <li>● Ensure pre-hot time</li> <li>● Check the belt</li> </ul>
Machine vibrate and walk slightly while engine low speed running	<ul style="list-style-type: none"> <li>● Check the centrifugal clutch wheel</li> </ul>

## **MAINTENANCE DATE LIST:**

	Daily before starting	The first month or 20 hours	Every 6 months or 100 hours	Every year or 300 hours
Check lubricating oil level	●			
Exchange lubricating oil		●	●	
Check air cleaner	●			
Clean air cleaner			●	
Exchange air cleaner				● (1)
Check-adjudge spark plug			●	
Exchange spark plug				●
Check- adjudge valve				● (2)
Check- adjudge firebox				● (2)
Check- adjudge fuel tank			●	

# Spare parts manual:

## Vibration system

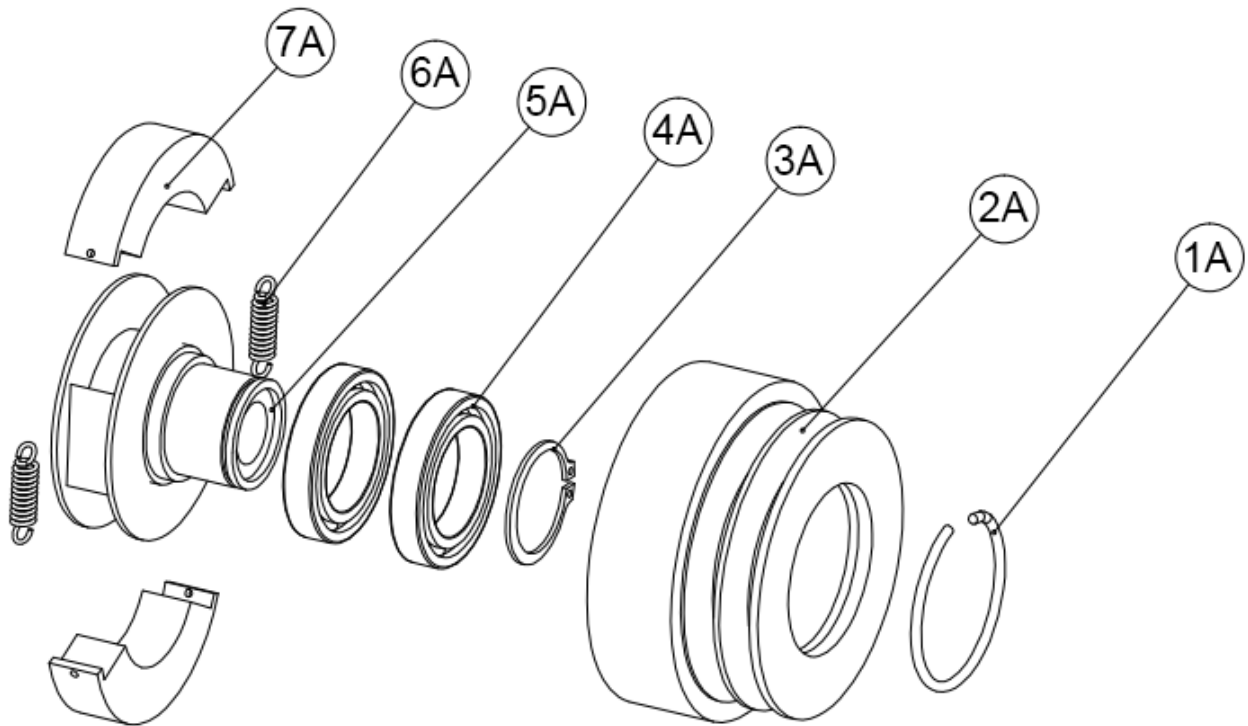


TMG-MVR10 Vibration system

Part No.	Item	Code	Model	quantity	remarks
1	Engine		GX160	1	
2	Engine bush	3600608A		1	
3	Engine coupling	3600605		1	
4	Nylon tie	0120522		1	

5	Coupling of vibration tube	3040507D		1	
6	Circlip for shaft		25		
7	Pulley	3600606A		1	
8	Sleeve	3600607B		1	
9	A flat key		A5X20	1	
10	Deep groove ball bearing		6005ZZ	2	
11	A flat key		A8X25	1	
12	Transmission shaft	3600601D		1	
13	A flat key		A5X35	1	
14	Axle sleeve	3600602B		1	
15	Clutch wheel assembly	3601201		1	
16	Flat washer		8.5X28.5	1	
17	Spring washer		8	2	
18	Hexagon bolt		M8X15	1	
19	Belt		XPZ987	2	
20	Lock nut		M14	1	
21	Spring washer		14	1	
22	Flat washer		14	1	
23	Circlip for hole		20	1	
24	Circlip for shaft		42	2	
25	Vibration tensioner pulley	3600708		1	
26	Deep groove bearing		6004ZZ	1	
27	Vibration tensioner pulley sleeve	3600709		1	
28	Vibration tensioner shaft	3600210		1	
29	C type flat key		C5X20	1	
30	Gear pump	3601017		1	
31	Circlip for shaft		30	1	
32	Pump support	3600206D		1	
33	Deep groove bearing		6006ZZ	1	
34	Circlip for hole		55	1	
35	Pulley	3600603B		1	
36	Circlip for hole		16	1	
37	Belt		SPZ612	2	
38	Hexagon screw		M8X20	1	

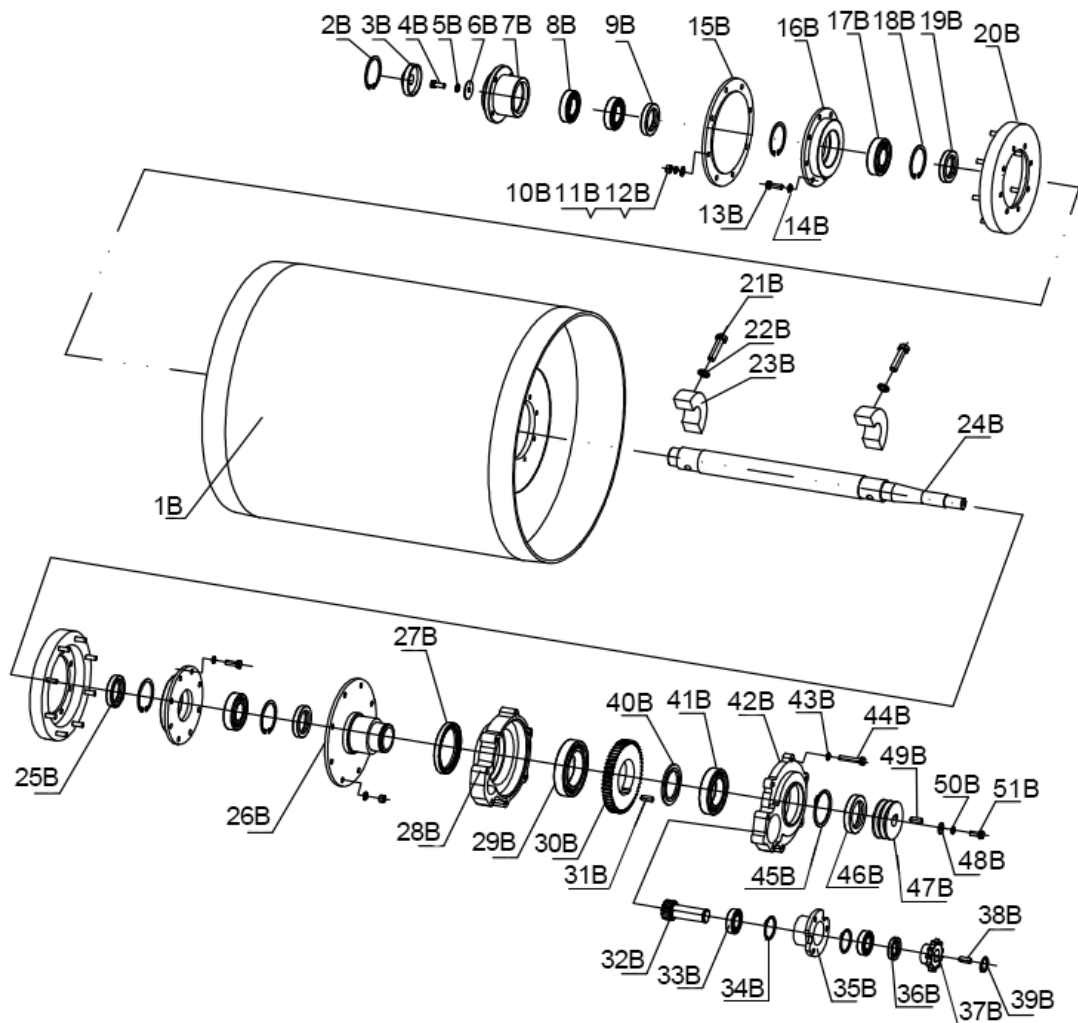
## Clutch wheel assembly



TMG-MVR10 Clutch wheel assembly					
Part No.	Item	Code	Model	Quantity	Remarks
1A	Round wire snap ring for hole	0040227		1	
2A	Vibration clutch wheel	3600610A		1	
3A	Circlip for shaft		35	1	
4A	Deep groove bearing		6907ZZ	2	
5A	Coupling	0260407A		1	
6A	Draw spring	0260403		2	
7A	Block	0260408		2	



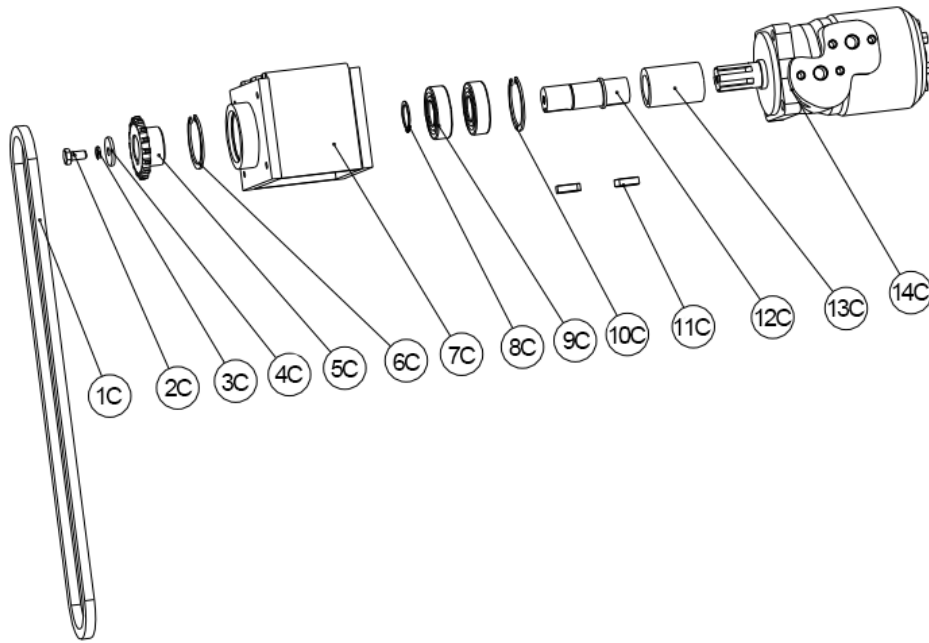
## Moving wheel assembly



TMG-MVR10 RWYL11 wheel assembly				
Part No.	Code	Item	Quantit	Remar
1B	3600101	Roller assembly	1	
2B		Circlip for hole62	1	
3B	0260213	Cover	1	
4B		Hexagon bolt M8x20	1	
5B		Spring washer 8	1	
6B		Extra-large flat washer 8	1	
7B	0260215A	Bearing base	1	
8B		Deep groove bearing 6007-2Z	2	
9B		Lip-type seal ring $\Phi 45 \times \Phi 62 \times 8$	1	
10B		Nut M8	16	
11B		Spring washer 8	16	
12B		Flat washer 8	16	
13B		Hexagon bolt M8x25	16	
14B		Spring washer 8	16	

15B	0260211	End cover	1	
16B	0260102A	End of bearing	2	
17B		Deep groove bearing 6207-2Z	2	
18B		Circlip for hole 72	4	
19B		Lip-type seal ring $\Phi 42 \times \Phi 72 \times 8$	2	
20B	0260107	Shock absorber	2	
21B		Hexagon bolt M12x45-12.9	2	
22B		Spring washer 12	2	
23B	3600103	Fling block	2	
24B	3600102	Main shaft	1	
25B		Lip-type seal ring $\Phi 42 \times \Phi 72 \times 8$	1	
26B	0260210	End cover	1	
27B		Lip-type seal ring $\Phi 80 \times \Phi 100 \times 10$	1	
28B	0260201A	Gear box	1	
29B		Deep groove bearing 6014-2Z	1	
30B	0260203	Gear	1	
31B		Flat key 12x8x17	1	
32B	0260204B	Input gear	1	
33B		NJ205	2	
34B		Circlip for hole 47	2	
35B	0260205E	Bearing base	1	
36B		Circlip for hole $\Phi 38 \times \Phi 50 \times 7$	1	
37B	0260209C	Chain wheel	1	
38B		Flat key 8x7x25	1	
39B		Circlip for shaft 25	1	
40B	0260206	Circle pad	1	
41B		Deep groove bearing 6011-2Z	1	
42B	0260202A	Gear box cover	1	
43B		Spring washer 8	7	
44B		Hexagon bolt M8x45	7	
45B		Circlip for shaft 55	1	
46B		Lip-type seal ring $\Phi 55 \times \Phi 75 \times 8$	1	
47B	0260805	Vibration pulley	1	
48B		Extra-large flat washer 8		
49B		Flat key 8x35	1	
50B		Spring washer 8		
51B		Hexagon bolt M8x16	1	

## Driving assembly



TMG-MVR10 Driving assembly					
Part No.	Item	Code	Model	Quantity	Remarks
1C	Chain	3600711	1A-72L	1	
2C	Hexagon bolt		M8X15	1	
3C	Spring washer		8	1	
4C	Extra-large flat washer		8.5X28.5	1	
5C	Transmission chain	3040603A		1	
6C	Circlip for hole		47	1	
7C	Motor mounting seat	3600401		1	
8C	Circlip for shaft		25	1	
9C	Deep groove bearing		6005ZZ	2	
10C	Circlip for hole		47	1	
11C	C type flat key		C8X24	1	
12C	Transmission shaft	3600403		1	
13C	Connecting sleeve	3600402		1	
14C	Cycloid motor	3601003		1	