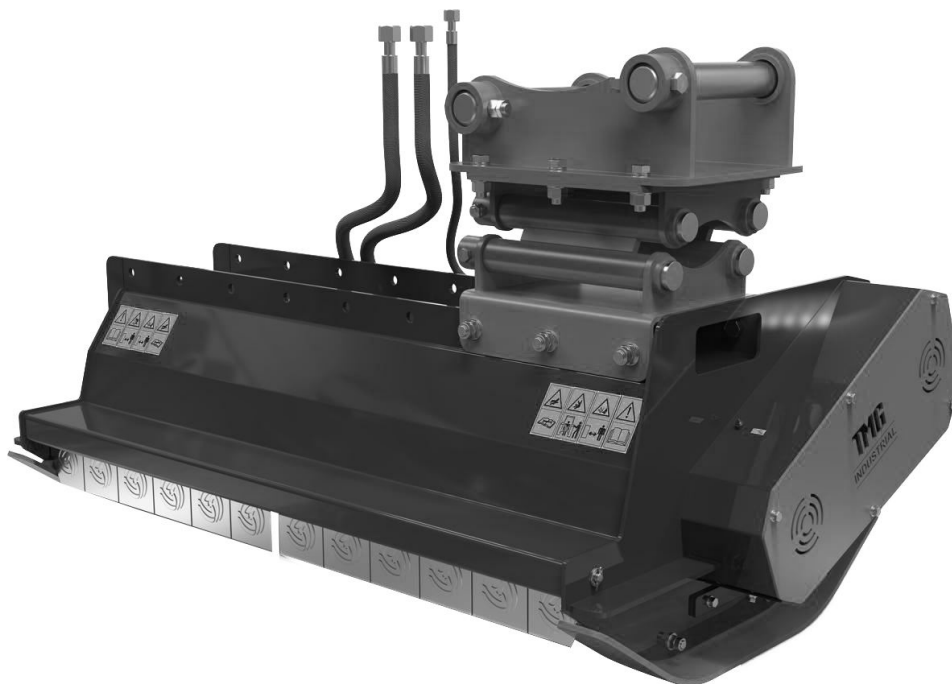


Excavator Brush Flail Mower

MODEL:TMG-EFM32
TMG-EFM40
TMG-EFM48



- Please read the product manual completely before assembly
- Check against the parts list to make sure all parts are received
- Wear proper safety goggles or other protective gears while in assembly

Missing parts or questions on assembly?

Please call: 1-877-761-2819 or email: cs@tmgindustrial.com

Do not return the product to dealer, they are not equipped to handle your requests

Important Safety information

Safety at all times

Thoroughly read and understand the instructions given in this manual before operation. Refer to the “Safety Decal”, read all instructions noted on them.

Do not allow anyone to operate this equipment who has not fully read and comprehended this manual and who has not been properly trained in the safe operation of the equipment.

- Operator should be familiar with all functions of the unit.
- Operate implement from the driver’s seat only.
- Make sure all guards and shields are in place and secured before operating the implement.
- Do not leave tractor or implement unattended with engine running.
- Dismounting from a moving tractor could cause serious injury or death.
- Do not stand between tractor and implement during hitching.
- Keep hands, feet, and clothing away from power-driven parts.
- Wear snug fitting clothing to avoid entanglement with moving parts.
- Watch out for wires, trees, etc., when raising implement. Make sure all persons are clear of working area.

Look for The Safety Alert Symbol

The SAFETY ALERT SYMBOL indicates there is a potential hazard to personal safety involved and extra safety precaution must be taken. When you see this symbol, be alert and carefully read the message that follows it. In addition to design and configuration of equipment, hazard control and accident prevention are dependent upon the awareness, concern, prudence and proper training of personnel involved in the operation, transport, maintenance and storage of equipment.

Be aware of signal words

A signal word designates a degree or level of hazard seriousness. The signal words are:



DANGER

Indicates an imminently hazardous situation which, if not avoided, will result in death or serious injury. This signal word is limited to the most extreme situations, typically for machine components that, for functional purpose, cannot be guarded.



WARNING

Indicates a potentially hazardous situation which, if not avoided, could result in death or serious injury, and includes hazards that are exposed when guards are removed. It may also be used to alert against unsafe practices.



CAUTION

Indicates a potentially hazardous situation which, if not avoided, may result in minor or moderate injury. It may also be used to alert against unsafe practices.

For you protection

- Thoroughly read and understand the “safety label” section, read all instructions noted on them.

Shutdown and storage

- Lower machine to ground, put tractor in park, turn off engine, and remove the ignition key.
- Detach and store implements in a area where children normally do not play. Secure implement by using blocks and supports.

Use safety lights and devices

- Slow moving tractors, self-propelled equipment, and towed implements can create a hazard when driven on public roads. They are difficult to see, especially at night.
- Flashing warning lights and turn signals are recommended whenever driving on public roads. Use lights and devices provided with implement.

Keep riders off machinery

- Riders obstruct of operator’s view, they could be struck by foreign objects or thrown from the machine.
- Never allow children to operate equipment.

Practice safe maintenance

- Understand procedure before doing work. Use proper tools and equipment. refer to Operator’s Manual for additional information.
- Work in a clean dry area.
- Lower the implement to the ground, put tractor in park, turn off engine, and remove key before performing maintenance.
- Allow implement to cool completely.
- Do not grease or oil implement while it is operation.
- Inspect all parts. Make sure parts are in good condition and installed properly.
- Remove buildup of grease, oil or debris.
- Remove all tools and unused parts from implement before operation.

Prepare for emergencies

- Be prepared if a fire starts.
- Keep a fist aid kit and fire extinguisher handy.
- Keep emergency numbers for doctor, ambulance, hospital and fire department near phone.

Wear protective equipment

- Protective clothing and equipment should be worn.
- Wear clothing and equipment appropriate for the job. Avoid loose fitting clothing.
- Prolonged exposure to loud noise can cause hearing impairment or hearing loss. Wear suitable hearing protection such as earmuffs or earplugs.
- Operating equipment safely requires the full attention of the operator. Avoid wearing radio headphones while operating machinery.

Avoid high pressure fluids hazard

- Escaping fluid under pressure can penetrate the skin causing serious injury.
- Avoid the hazard by relieving pressure before disconnecting hydraulic lines.
- Use a piece of paper or cardboard, not body parts, to check for suspected leaks. Wear protective gloves and safety glasses or goggles when working with hydraulic systems.
- If an accident occurs, see a doctor immediately. Any fluid injected into the skin must be treated within a few hours or gangrene may result.

Safety Labels

Your Flail Mower comes equipped with all safety labels in place. They were designed to help you safely operate your implement. Read and follow their directions.

- Keep all safety labels clean and legible.
- Replace all damaged or missing labels. To order new labels go to your nearest Jonova dealer or visit our dealer locator at Jonova.com.
- Some new equipment installed during repair requires safety labels to be affixed to the replaced component as specified by Jonova. When ordering new components make sure the correct safety labels are included in the request.

Introduction

Jonova welcomes you to the growing family of new product owners. This implement has been designed with care and built by skilled workers using quality materials. Proper assembly, maintenance, and safe operating practices will help you get years of satisfactory use from the machine.

Using This Manual

- This Operator's Manual is designed to help familiarize you with safety, assembly, operation, adjustments, troubleshooting, and maintenance. Read this manual and follow the recommendations to help ensure safe and efficient operation.
- The information contained within this manual was current at the time of printing. Some parts may change slightly to assure you of the best performance.
- To order a new Operator's or Parts Manual contact your authorized dealer. Manuals can also be printed from the Jonova Service & Support Center by your dealer.

Terminology

“ Right” or “Left” as used in this manual is determined by facing the direction the machine will operate while in use unless otherwise stated.

Definitions

Note : A special point of information that the operator must be aware of before continuing.

Important : A special point of information related to its preceding topic. The intention is that this information should be read and noted before continuing.

Owner Assistance

The Warranty Registration card should be filled out by the dealer at the time of purchase. This information is necessary to provide you with quality customer service. If customer service or repair parts are required contact a dealer. A dealer has trained personnel, repair parts and equipment needed to service the machine.

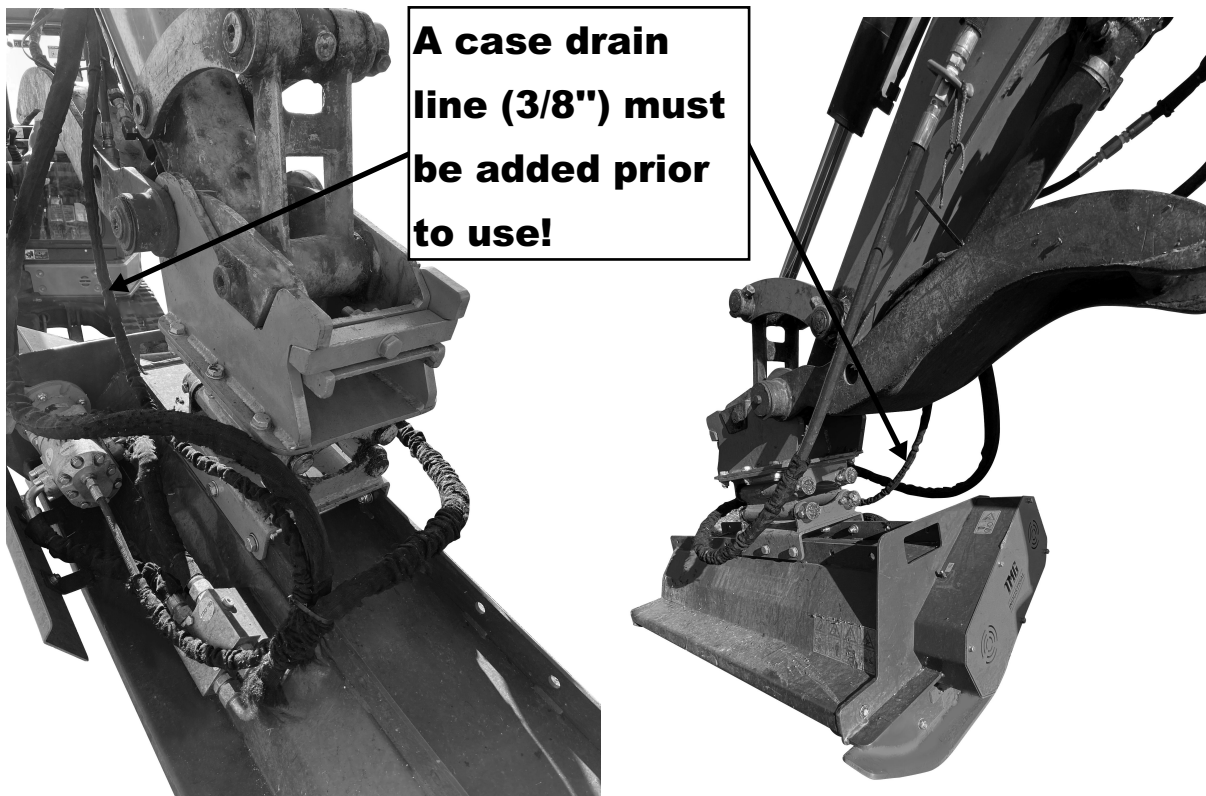
The parts on your machine have been specially designed and should only be replaced with genuine parts.

Serial Number Plate

For prompt service always use the serial number and model number when ordering parts from your dealer. Be sure to include your serial and model numbers in correspondence also.

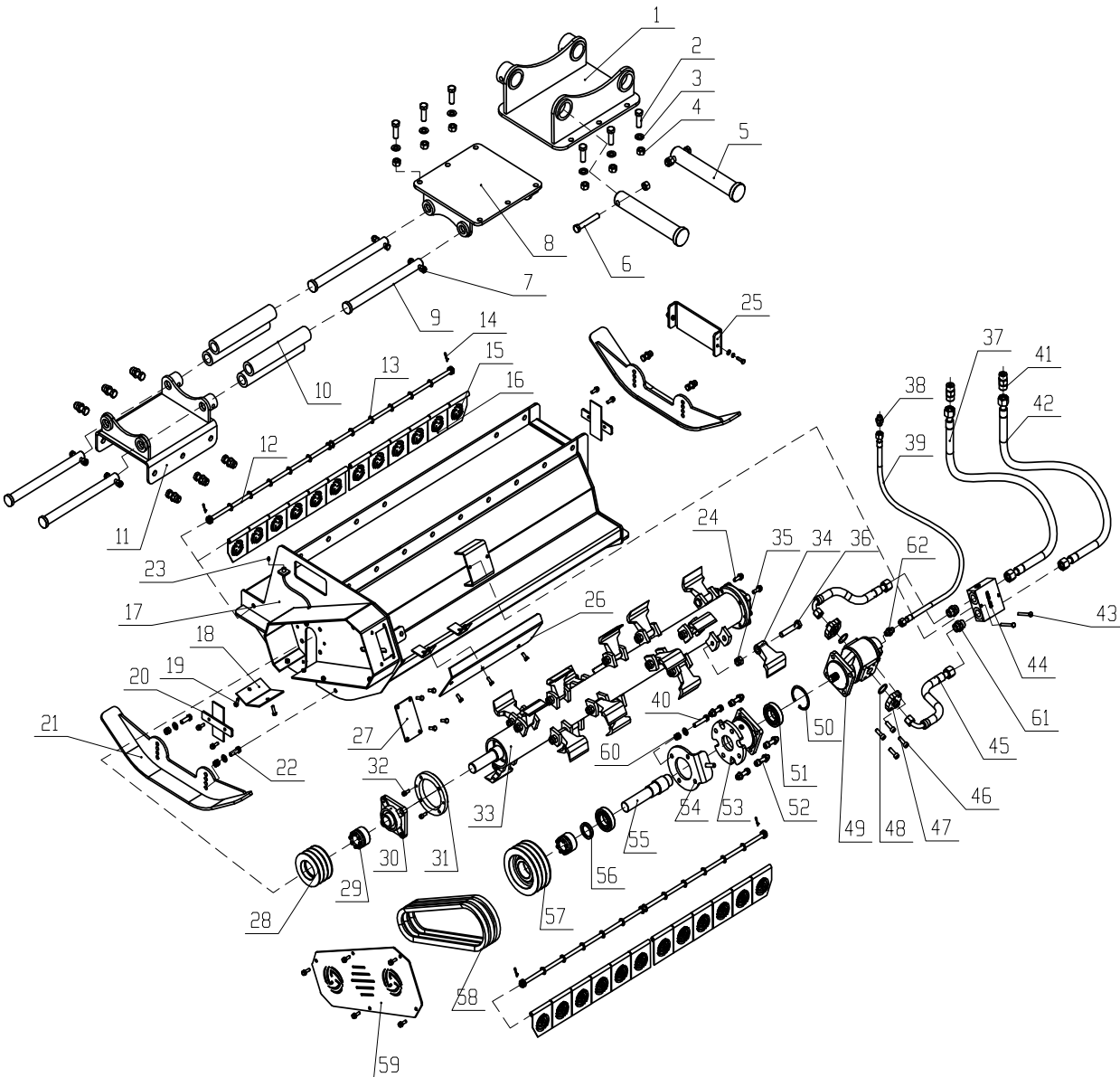
High Attention!

A case drain line (3rd hose line--3/8") is required to be added prior to use of this attachment. The case drain line will relieve the excess pressure and drain it back to your return line, then into the reservoir. Without a case drain line installed properly, that extra pressure will blow a seal or damage your hydraulic line.



Parts illustration

TMG-EFM32; TMG-EFM40; TMG-EFM48



No.	Code	Description	Qty		
			EFM32	EFM40	EFM48
1	EXF800.2TMG	Hook weldment	1		
	EXF1200.2			1	1
2	GB/T 5783	Bolt M16*40	12		
3	GB/T 97.1	Washer 16	14		
4	GB/T 889.1	Locking Nut M16	20		
5	EXF800.18	Pin	2		
	EXF1200.18			2	2
6	GB/T 5782	Bolt M6*100	2		
7	GB/T 5782	Bolt M12*70	4		
8	EXF800.3	Connection weldment 03	1		
	EXF1200.3			1	1
9	EXF1200.19	Pin 03	4		
10	EXF1200.4	Connection weldment 04	1		
11	EXF1200.5	Connection weldment 05	1		
12	EXF800.20	Shaft bar	2		
	EXF1000B.20			2	
	EXF1200.20				2
13	GB/T 97.1	Washer 12	48		
14	EF100.00.300	R Pin 3.2	4		
15	EF100.00.122A	Fender	4		
16	EF100.00.122	Wide fender	12		
				16	
					20
17	EXF800.1	Mower deck	1		
	EXF1000.1			1	
	EXF1200.1				1
18	EXF1200.14	Belt cover plate	1		
19	GB/T 5783	Bolt M8*20	16		
20	EXF1200.10	Cover weldment	2		
21	EXF1200.6	Skid shoes weldment	2		
22	GB/T 5783	Bolt M12*30	4		
23	JB/T 7940.1	Grease nipple M6	1		
24	GB/T 5783	Bolt M12*40	8		
25	EXF1200.15	Bearing cover	1		
26	EXF1200.12	Motor protection plate	1		

27	EXF1200.13	Up belt cover	1		
28	EXF800.27	Small pulley	1		
	EFGC155.27			1	1
29	JB/T 11544	Sleeve REACH 04	2		
30	GB/T 7810	Bearing UCFU207	2		
31	EXF1200.9	Protect cover	2		
32	GB/T 70.1	Bolt M8*25	4		
33	EXF800.8	Blade axle weldment	1		
	EXF1000B.8A			1	
	EXF1200.8				1
34	EFGC175.32	Hammer	14		
				16	
					18
35	GB/T 889.2	Locking Nut M16*1.5	14		
				16	
					18
36	GB/T 5785	Bolt M16*1.5*85	14		
				16	
					18
37	EXF800.21.2	Oil pipe 01 M22*1.5 BSPG1/2	1		
	EXF1200.21.2	Oil pipe 01 M27*1.5 BSPG1/2		1	1
38	EXF1200.21.3	Plug BSPG3/8	1		
39	EXF1200.21.4	Oil pipe 02 M14*1.5 BSPG3/8	1		
40	GB/T 5783	Bolt M12*50	4		
41	EXF1200.21.1	Plug BSPG1/2	2		
42	EXF800.21.5	Oil pipe 03 M22*1.5 BSPG1/2	1		
	EXF1200.21.5	Oil pipe 03 M27*1.5 BSPG1/2		1	1
43	GB/T 5782	Bolt M8*60	2		
44	EXF800.22	Valve	1		
	EXF1200.22			1	
45	EXF800.21.6	Oil pipe 04 M22*1.5 F44.4	2		
	EXF1200.21.6	Oil pipe 04 M27*1.5 F44.4		2	2
46	GB/T 70.1	Bolt M10*30	8		
47	EXF1200.21.7	Connection FL-16	2		
48	AS 568	O rings 219	2		

49	CMGh2025-BF ΦS	Gear motor	1		
	CMGh2040-BF ΦS			1	1
50	GB/T 893.1	Circlip 80	1		
51	GB/T 276	Bearing 6208-Z	2		
52	GB/T 70.1	Bolt M12*50	4		
53	LM180.17-1	Coupling housing	1		
54	EXF1200.7	tension plate	1		
55	EXF1200.17-1	Coupling shaft	1		
56	GB/T 1387.1	Oil seal 40*55*8	1		
57	EFGC155.31	Big pulley	1		
58	GB/T 11544	Belt SPB1016	3		
59	EXF1200.11	Belt cover	1		
60	GB/T 889.1	Locking Nut M12	16		
61	GE15LR1/2ED	Connector M22*1.5-G1/2	4		
	GE18LR3/4ED	Connector M27*1.5-G3/4		4	4
62	GE08LR3/8ED	Connector M14*1.5-G3/8	2		