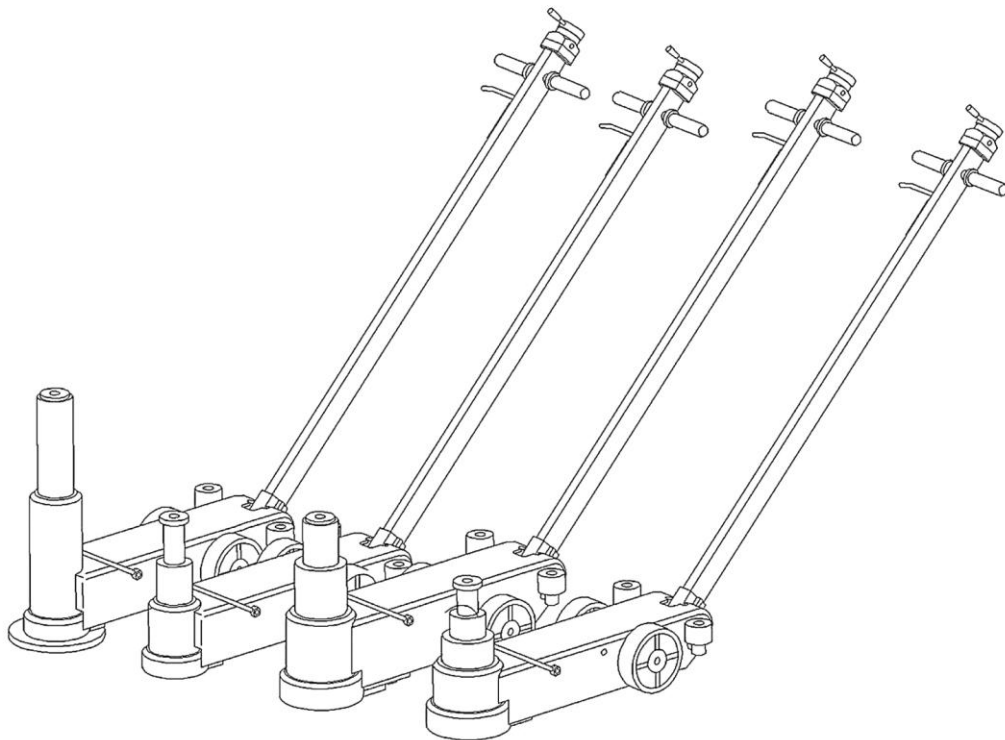


50 TON / 80 TON AIR HYDRAULIC TRUCK JACK, TWO STAGE



⚠ WARNING

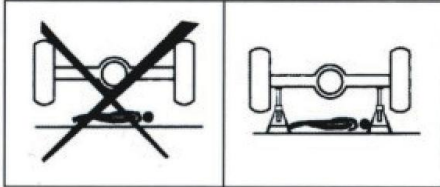


- Please read and understand the product manual completely before assembly
- Check against the parts list to make sure all parts are received
- Wear proper safety goggles or other protective gears while in assembly
- Do not return the product to dealer. They are not equipped to handle your requests.

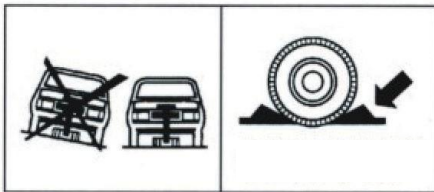
Missing parts or have questions on assembly?

Please call: 1-877-761-2819 or email: cs@tmgindustrial.com

1. For operation only by trained personnel having read and understood the user's guide. Overloading can cause damages to or failure of the jack.
2. This jack is designed for lifting loads only on hard level surfaces capable of sustaining the load. Use on other than hard level surfaces may result in loss of load can result in jack instability and possible loss damage to jack, and/or failure resulting of load.
3. This load must be supported immediately by other appropriate means. No person should remain in, on, or get bodily under a load that is being jacked or is supported only by a jack.



4. It is recommended that the wheels of a vehicle be chocked

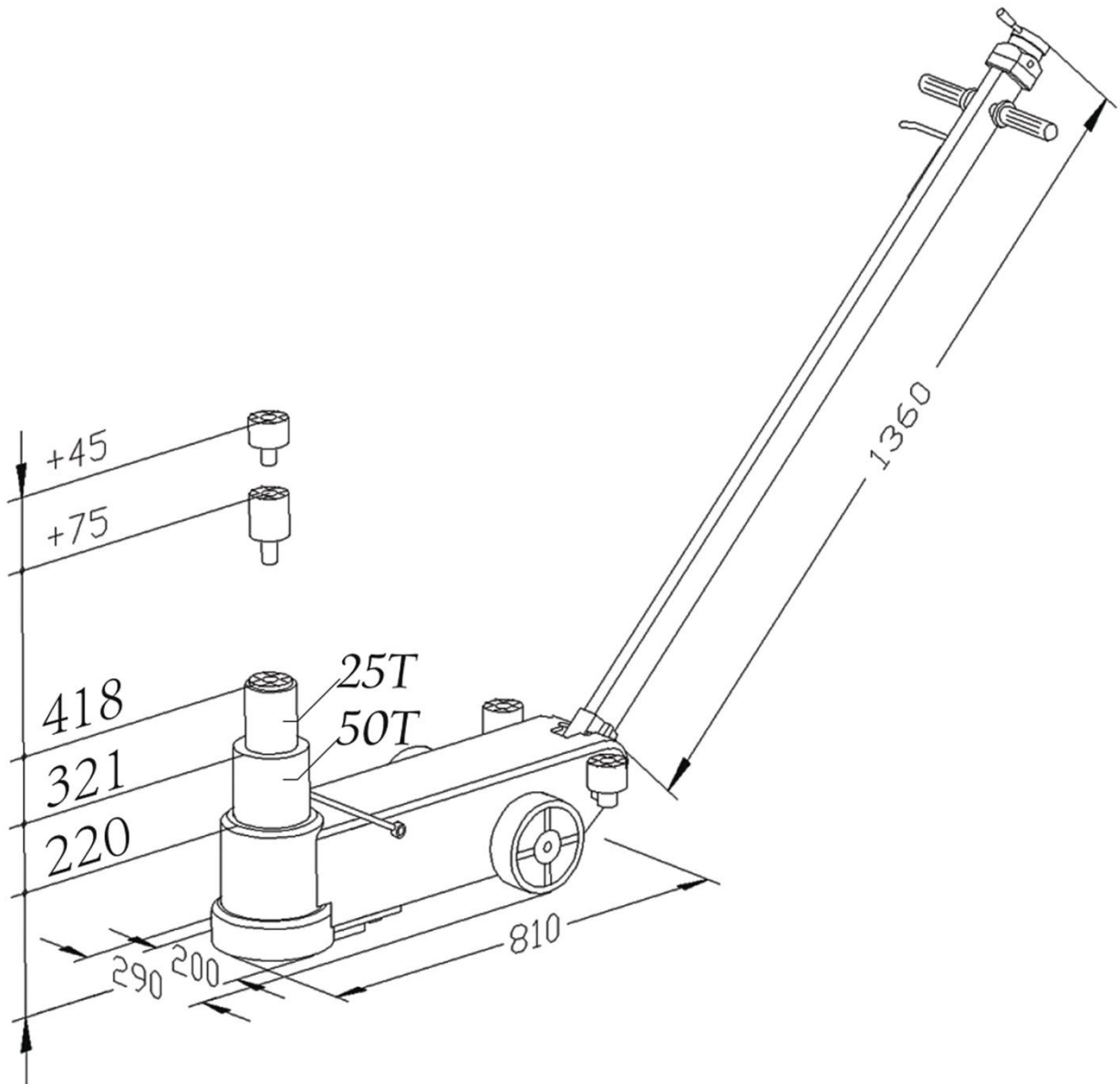


5. Do not use more than 2 standard extensions in sequence,
6. The safety valve being adjusted and sealed by the manufacturer shall not be additionally adjusted Use only original spare parts and accessories.
7. Maximum permissible pressure: 170 PSI, 12 bar.
8. Any good hydraulic oil of Viscosity ISO VG 15(15°C to 45°C) can be used, **NEVER USE BRAKE FLUID.**
9. Do not overload. Overloading can cause damage to or failure of the jack.

⚠️ WARNING

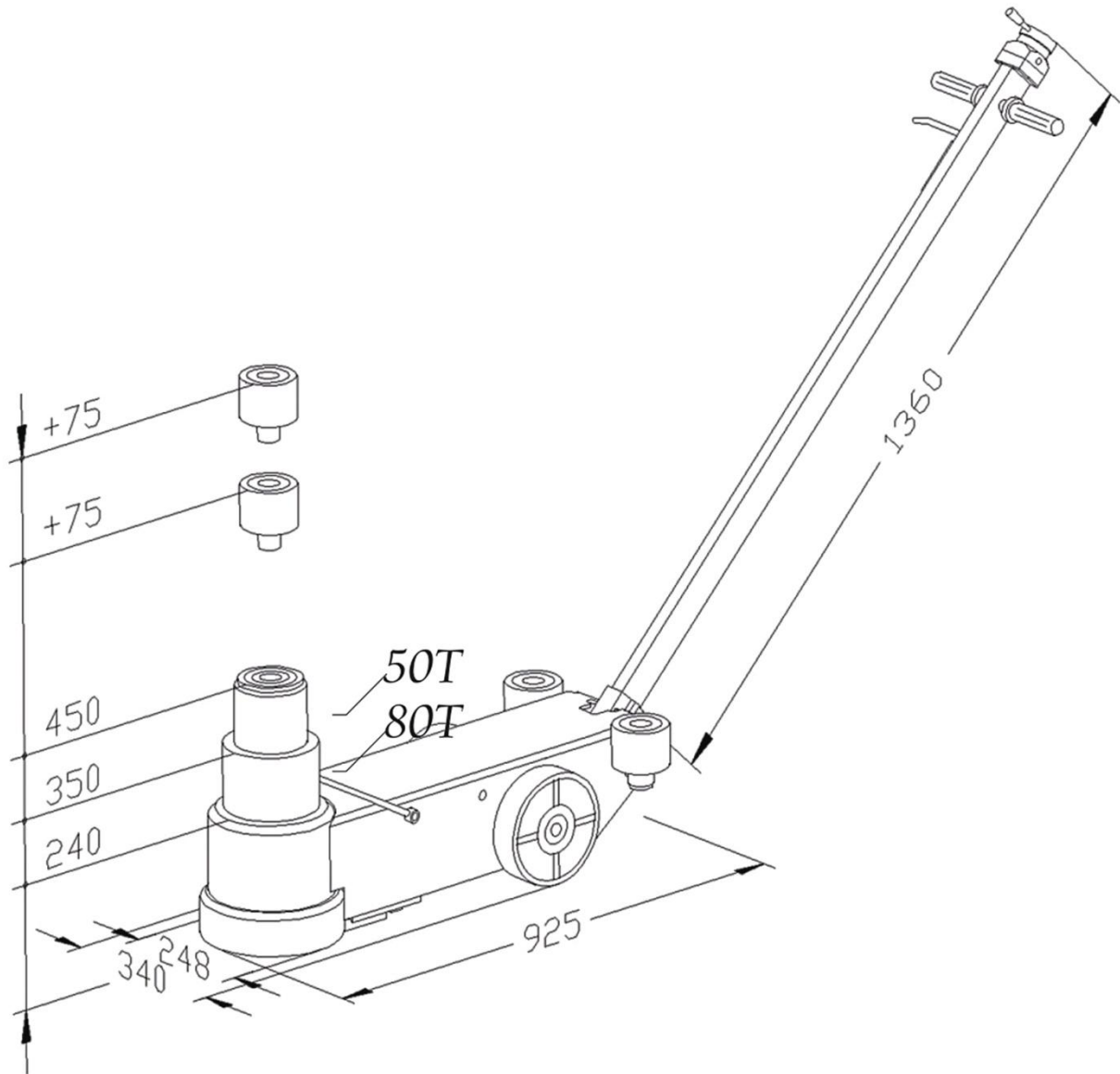
FAILURE TO FOLLOW THESE WARNINGS MAY RESULT IN LOSS OF LOAD, DAMAGE TO JACK, AND/OR FAILURE RESULTING IN PERSONAL INJURY OR PROPERTY DAMAGE.

TMG-AJT50



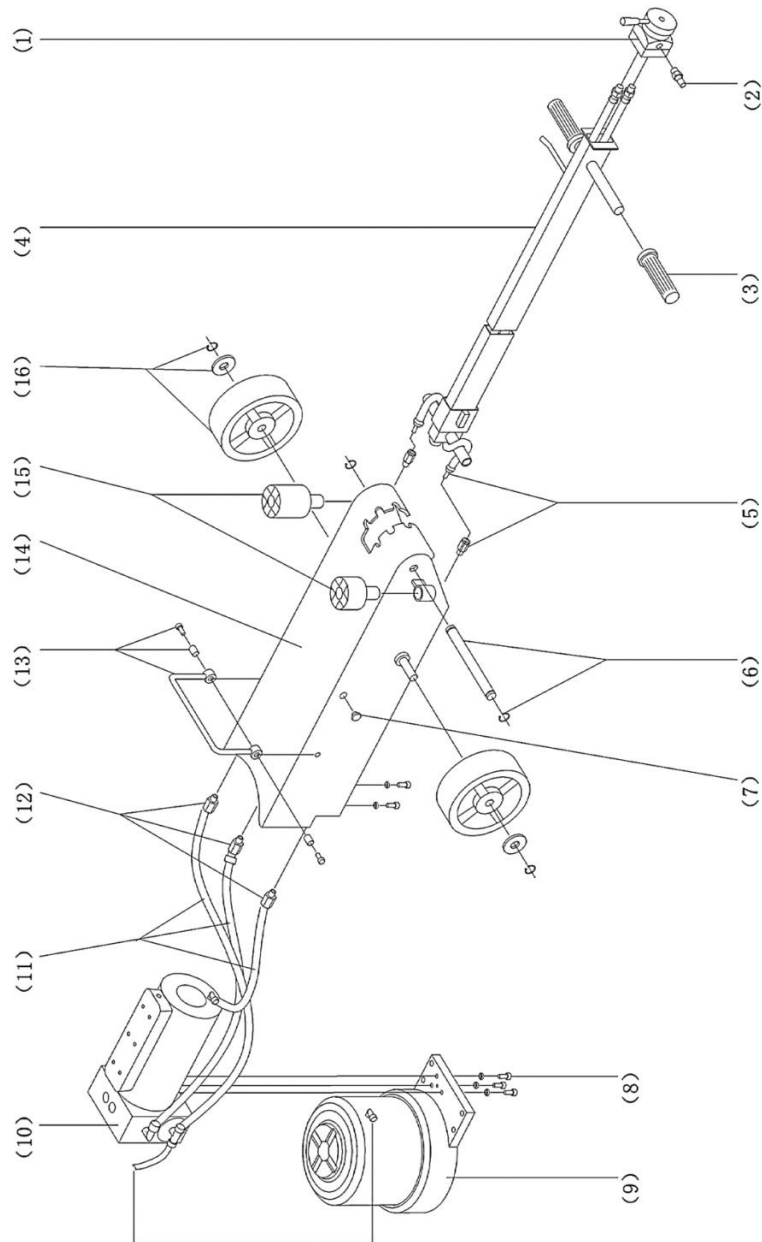
Capacity	50T /25T
Air pressure	0.6~1.0MPa
Minimum height	220mm
Lift	102mm/210mm
Extension height	45mm 75mm
Rated pressure	32MPa
Net weight	79Kg

TMG-AJT80



Capacity	80T/50T
Air pressure	0.6~1.0MPa
Minimum height	240mm
Lift	110mm/210mm
Extension height	45mm 75mm
Rated pressure	32MPa
Net weight	105Kg

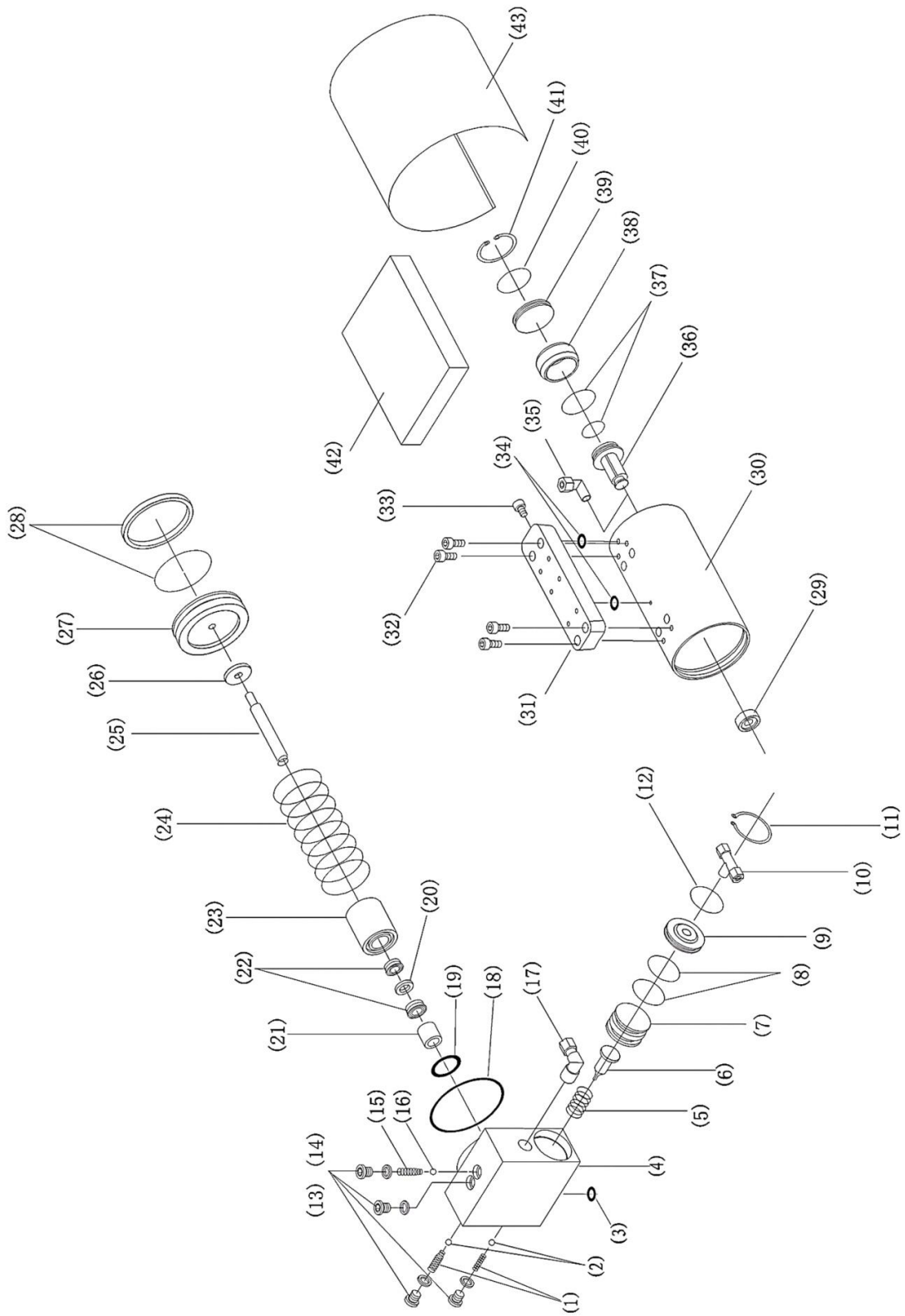
WHOLE STRUCTURE



PART NUMBER	DESCRIPTION	QTY
1	Switch	1
2	Air Fitting	1
3	Handle	2
4	Handle	1
5	Fitting	3
6	Tack, Circlip	3
7	Plug	1
8	Screw	3

PART NUMBER	DESCRIPTION	QTY
9	Cylinder	1
10	Pump complete	1
11	Hose	3
12	Fitting	3
13	Handle components	5
14	Frame	1
15	Extension height	2
16	Wheel	6

PMP STRUCTURE (A)



PART NUMBER	PART DESCRIPTION	QTY	PART NUMBER	PART DESCRIPTION	QTY
1A	Spring	2	23A	Packing box	1
2A	Ball Φ 6.36	2	24A	Spring	1
3A	O-ring	1	25A	Pump Piston	1
4A	Pump body	1	26A	Back-up washer	1
5A	Spring	1	27A	Air piston	1
6A	Release valve	1	28A	OE-Seal	2
7A	Piston for release valve	1	29A	Seal for change valves	1
8A	O-ring	2	30A	Air cylinder	1
9A	Cover	1	31A	Exhaust cap	1
10A	Fitting	1	32A	Screw M6x16	4
11A	Circlip	1	33A	Screw M6x8	1
12A	O-ring	1	34A	O-ring	2
13A	Plug	4	35A	Fitting	1
14A	Back-up washer Φ 10	1	36A	Change valve	1
15A	Spring	1	37A	O-ring	2
16A	Ball Φ 6.36	1	38A	Valve bush	1
17A	Fitting	1	39A	Cover	1
18A	O-ring	1	40A	O-ring	1
19A	O-ring	1	41A	Circlip	1
20A	Piston guide	1	42A	Sponge panel	1
21A	Distance sleeve	1	43A	Sheet iron cap	1
22A	B3-Seal	2			

ASSAMBLY

Please note that it is necessary to use a little oil for lubrication during assembly of the jack. During transport this oil may drip to the bottom of the carton. This is inevitable and absolute no sign of defect.

If the jack has been turned over or upside-down a little oil will come into the Hoses and come out with the pump. Oil the mechanical parts before starting up and regularly thereafter.

Air connection:1/4" WRG.

USE OF THE JACK

Lifting: tun the control valve clockwise until the pump starts. Min-max pressure 9-12 bar/108-170 pcl.

Lowering: tun the control valve counter clockwise.

Lower the jack after use to protect the lifting cylinder.

MAINTENANCE

Damp air will damage the air jack on a long view. Like other pneumatic tools the air pump of the jack needs oil for lubricating the moving parts. It is recommended to use a built-in air lubricator and filter on the air-supply.

Weekly: lubricate the air motor by injecting a little oil into the air connection. Lubricate the cylinder wall and spread the oil by lifting to maximum position Monthly: lubricate all moving parts with a few drops of oil. At the same time inspect air jack and extensions for damage and wear and tear.

Refilling of oil: screw off the filling plug [no.7 of whole structure] at the side of the cylinder to refill. Correct oil level is to the lower edge of the hole for the filing plug with the jack in horizontal position, and cylinder in lowest position.

Any good hydraulic oil of viscosity ISO VG 15(-15° c up to 45° c) can be used. **NEVER USE BRAKE FLUID**

POSSIBLE FAULTS, AND HOW TO OVERCOME THEM

1. The jack cannot lift to maximum height, and the pump runs continuously; Refill the oil tank.
2. The air engine goes too slowly: the air filter (no.2 of the handle)of the control valve has been blocked and needs cleaning or change.
3. In frosty weather: the jack will not pump: there is too much water in the air supply, which has frozen. Mount a water separator with lubricator on the air-supply. Change the oil of the jack, if water in it.

Apart from the above, faults may arise after intensive use due to won to Worm seals, which must then be replaced by new seals.

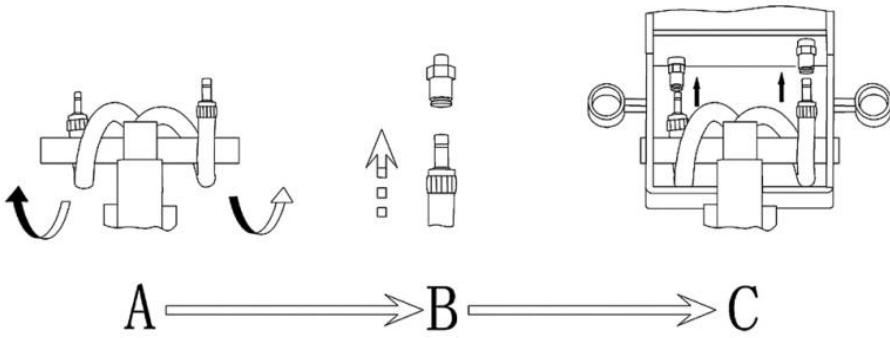
SPARE PARTS

Replace won or broken parts with genuine jack manufacturer supplied Parts only. All major parts may not be provided as spare parts after discontinuation of production of a model,

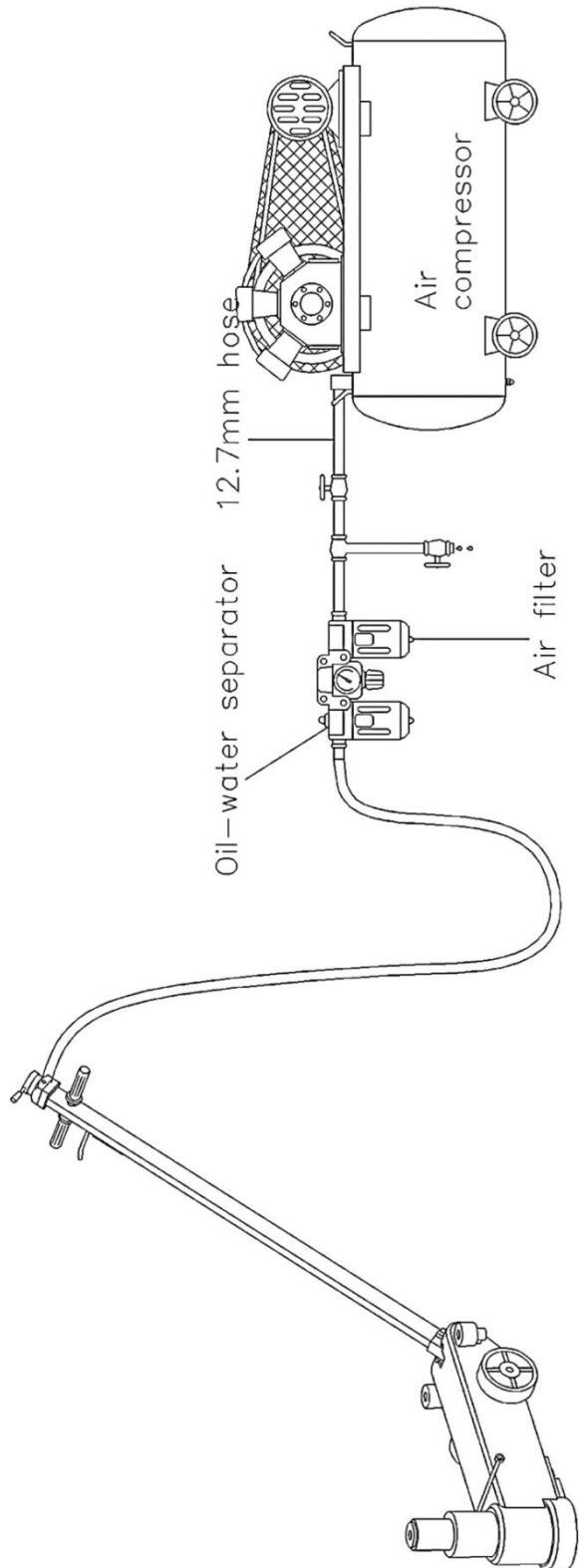
DESTRUCTION

Oil must be drained off and legally disposed of

HOW TO INSTALL



AIR SUPPLY DIAGRAM



1. Air sh
2. Th sh co

TOLL FREE:1-877-761-2819