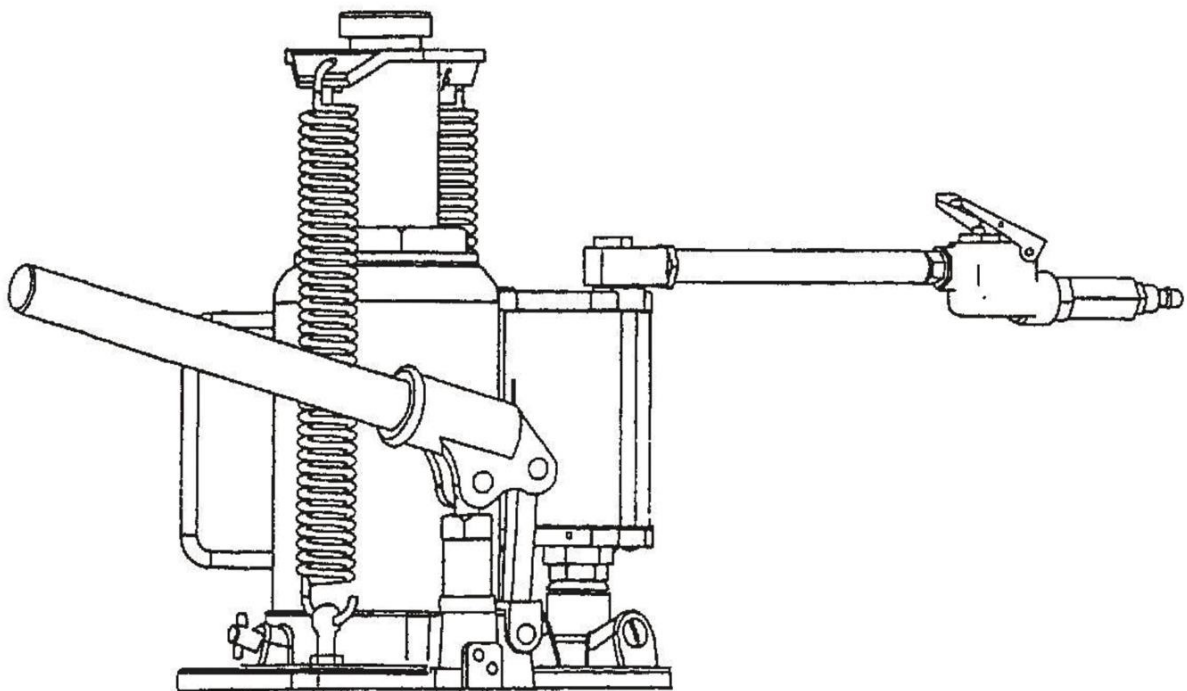


30 TON / 50 TON AIR HYDRAULIC BOTTLE JACK



⚠ WARNING



- Please read and understand the product manual completely before assembly
- Check against the parts list to make sure all parts are received
- Wear proper safety goggles or other protective gears while in assembly
- Do not return the product to dealer. They are not equipped to handle your requests.

Missing parts or have questions on assembly?

Please call: 1-877-761-2819 or email: cs@tmgindustrial.com

OPERATION

LIFTING

1. Assemble 2 pc. Handle, ensure that spring clips align with slots.
2. Secure the load to prevent inadvertent shifting and movement.
3. Position the jack near desired lift point.
4. Close the release valve by turning it clockwise until it is firmly closed.

CAUTION: USE THE HANDLE PROVIDED WITH THIS PRODUCT OR AN AUTHORIZED REPLACEMENT HANDLE TO ENSURE PROPER RELEASE VALVE OPERATION DO NOT USE AN EXTENDER ON THE AIR HOSE NOR THE OPERATING HANDLE. WHEN USING TO LIFT VEHICLE LIFT ONLY ON THE MANUFACTURER'S RECOMMENDED LIFT POINT AND IN ACCORDANCE WITH THE PUBLISHED GUIDELINES IN YOUR VEHICLE OWNERS MANUAL ALWAYS USE JACK STANDS TO SUPPORT THE LOAD IMMEDIATELY AFTER LIFTING.

5. Insert and secure handle into handle sleeve. Pump handle or squeeze the lift control valve until saddle contacts load. To end air operation, simply release the grip on the lift control valve. NEVER WIRE, CLAMP OR OTHERWISE DISABLE THE LIFT CONTROL VALVE TO FUNCTION BY ANY MEANS OTHER THAN BY USING THE OPERATOR'S HAND.
6. Raise load to desired height, then immediately transfer the load to appropriately-rated support devices such as jack stands.

WARNING

THIS IS A LIFTING DEVICE ONLY. IT IS DESIGNED TO LIFT PART OF THE TOTAL VEHICLE (ONE WHEEL OR AXLE) ALWAYS WEAR SAFETY GLASSES WHEN USING THIS EQUIPMENT CENTER LOAD ON SADDLE BEFORE LIFTING. NEVER WORK ON, UNDER OR AROUND LOAD UNTIL IT IS PROPERLY SUPPORTED. TRANSFER THE LOAD IMMEDIATELY TO APPROPRIATE RATED JACK STANDS. DO NOT USE THIS PRODUCT FOR ANY PURPOSE OTHER THAN THAT FOR WHICH IT WAS INTENDED. IT IS OWNER'S RESPONSIBILITY TO KEEP LABELS AND INSTRUCTIONAL MATERIAL LEGIBLE AND AVAILABLE. REPLACEMENT LABELS AND MANUALS ARE AVAILABLE FROM THE MANUFACTURER. FAILURE TO READ THESE AND ALL OTHER WARNINGS PERTAINING TO THIS PRODUCT CAN RESULTING IN DEATH, PERSONAL INJURY OR PROPERTY DAMAGE.

LOWERING

1. Raise load enough to carefully remove jack stands.
2. Insert handle onto release valve and slowly turn handle counterclockwise, but no more than 1/2 turn. If load fails to lower. Carefully transfer the load to
3. another lifting device and jack stands. Carefully remove affected jack, and then the jack stands. Lower the load, again by slowly turning the release valve no more than 1/2 turn.

WARNING

BE SURE ALL TOOLS AND PERSONNEL ARE CLEAR BEFORE LOWERING LOAD, DANGEROUS DYNAMIC SHOCK LOADS ARE CREATED BY QUICKLY OPENING AND CLOSING THE RELEASE VALVE AS THE LOAD IS BEING LOWERED. THE RESULTING OVERLOAD MAY CAUSE HYDRAULIC SYSTEM FAILURE WHICH COULD CAUSE SEVERE PERSONAL INJURY AND / OR PROPERTY DAMAGE.

4. After removing jack from under the load, push ram and handle sleeve down to reduce exposure to rust and contamination.

MAINTENANCE

Important: Use only a good grade hydraulic jack oil. Avoid mixing different types of fluid and NEVER use brake fluid, turbine oil, transmission fluid, motor oil or glycerin. Improper fluid can cause premature failure of the jack and the potential for sudden and immediate loss of load.

ADDING OIL

1. With saddle fully lowered and pump piston fully depressed, set jack in its upright, level position. Remove oil filler plug.
2. Fill until oil is level with the filler plug hole, re-install oil filler plug.

CHANGING OIL

For best performance and longest life, replace the complete fluid supply at least once per year.

1. With saddle fully lowered and pump piston fully depressed, remove the oil filler plug.
2. Lay the jack on its side and drain the fluid into a suitable container.

Note: Dispose of hydraulic fluid in accordance with local regulations.

3. Fill with good quality jack oil. Reinstall oil filler plug. We recommend Mobil DTE13 or equivalent.

LUBRICATION

1. A coating of light lubricating oil to pivot points, axles and hinges will help to prevent rust and assure that wheels, casters and pump assemblies move freely.
2. Periodically check the pump piston and ram for signs of rust or corrosion. Clean as needed and wipe with an oily cloth.

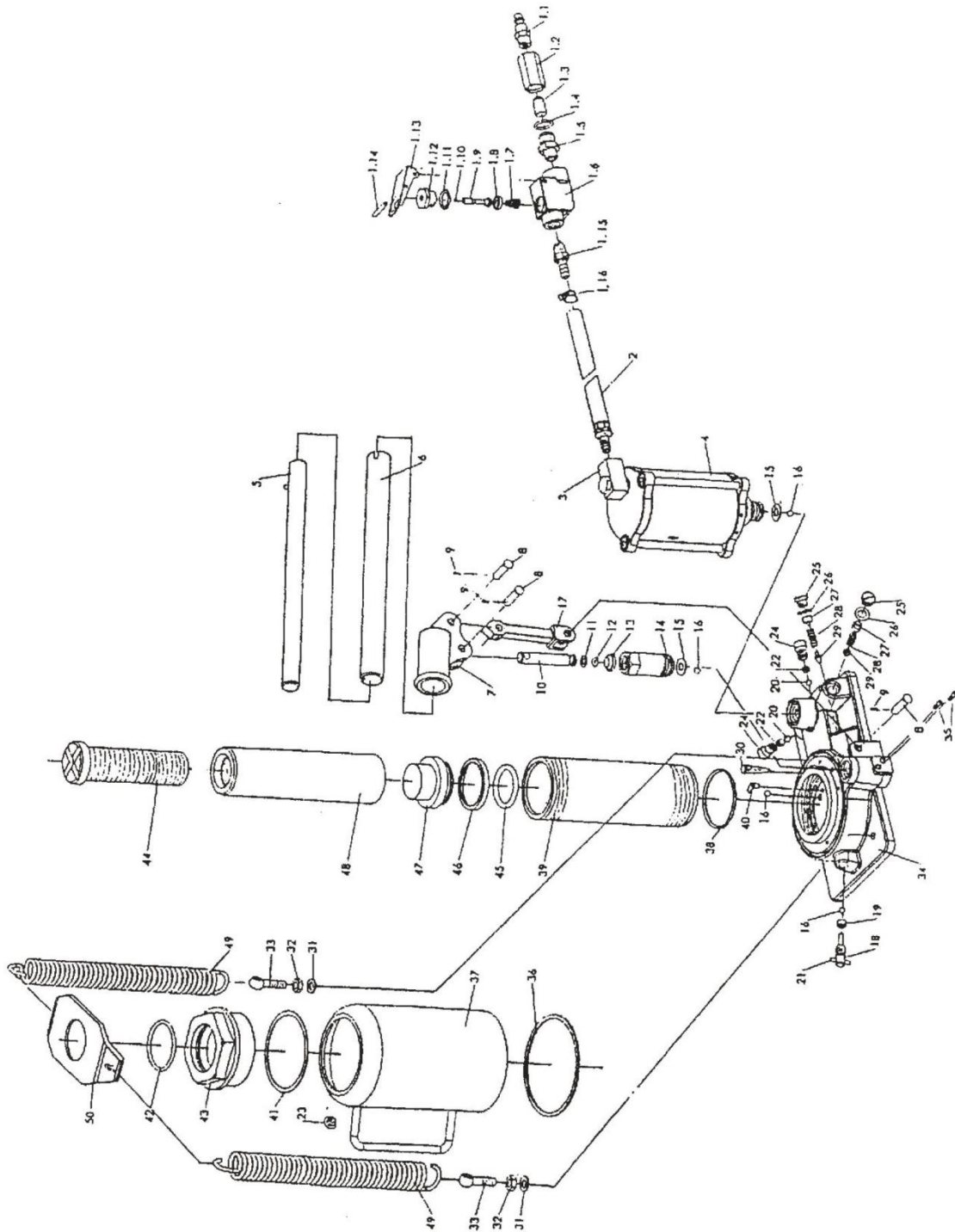
NEVER USE SANDPAPER OR ABRASIVE MATERIAL ON THESE SURFACES.

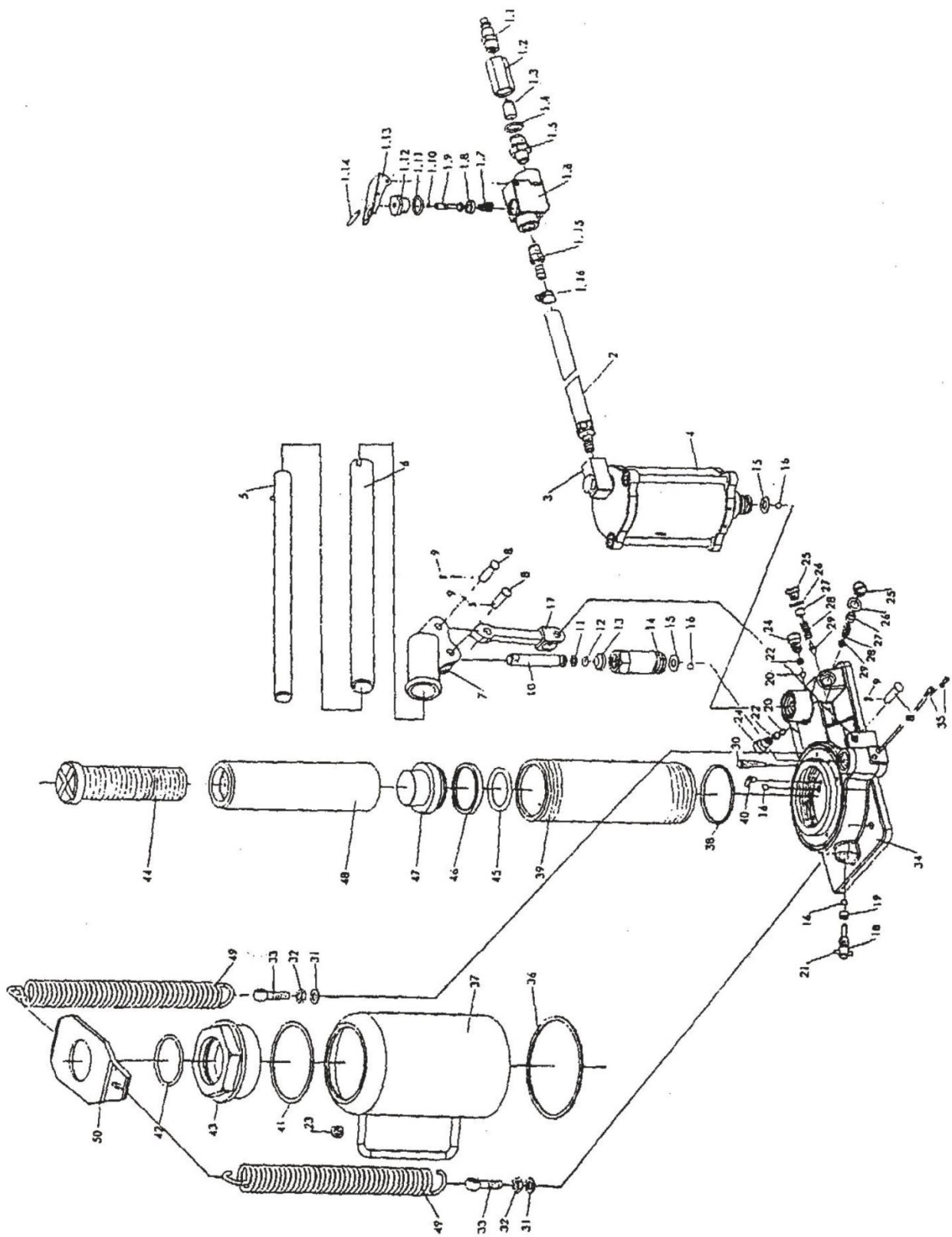
3. When not in use, store the jack with pump piston and ram fully retracted.

TROUBLESHOOTING

| SYMPTOM | POSSIBLE CAUSES | CORRECTIVE ACTION |
|-------------------------------------|--|--|
| Jack will not lift load | Release valve not tightly closed Overload condition Air supply inadequate | Ensure release valve tightly closed Remedy overload condition Ensure adequate air supply |
| Jack bleeds off after lift | Release valve lightly closed Overload condition Hydraulic unit malfunction | Ensure release valve tightly closed Remedy overload condition Contact seller |
| Jack will not lower after unloading | Reservoir overfilled Linkages binding | Drain fluid to proper level Clean and lubricate moving parts |
| Poor lift performance | Fluid level low Air trapped in system | Ensure proper fluid level With ram fully retracted, remove oil filler plug to let pressurized air escape, reinstall oil filler plug |
| Will not lift to full extension | Fluid level low | Ensure proper fluid level |

| MODEL | LIFTING CAPACITY (TON) | MIN ALTITUDE(MM) | LIFTING ALTITUDE(MM) | REGULATING ALTITUDE(MM) | AIR PRESSURE RANGE(MPA) | NET WEIGHT(KG) |
|-----------|------------------------|------------------|----------------------|-------------------------|-------------------------|----------------|
| TMG-AJA30 | 30T | 250+25 | 160 | / | 0.8-1 | 21 |
| TMG-AJA50 | 50T | 270+25 | 160 | / | 0.8-1 | 34 |





| NO. | DESCRIPTION | QTY |
|------|------------------------|-----|
| 1.1 | Hose connector | 1 |
| 1.2 | Connecting nut | 1 |
| 1.3 | Air filter | 1 |
| 1.4 | "O" ring 18*24 | 1 |
| 1.5 | Connector | 1 |
| 1.6 | Valve body | 1 |
| 1.7 | Spring | 1 |
| 1.8 | Packing | 1 |
| 1.9 | Throttle | 1 |
| 1.10 | "O" ring 3*1.6 | 1 |
| 1.11 | "O" ring 18*2.4 | 1 |
| 1.12 | Nut | 1 |
| 1.13 | Lever | 1 |
| 1.14 | Lever rin | 1 |
| 1.15 | Hose connector | 1 |
| 1.16 | Hose band | 2 |
| 2 | Air hose | 1 |
| 3 | Connector | 1 |
| 4 | Air pump | 1 |
| 5 | Handle upper | 1 |
| 6 | Handle lower | 1 |
| 7 | Plunger | 1 |
| 8 | Shaft pin | 3 |
| 9 | Cotter pin | 3 |
| 10 | Pump plunger | 1 |
| 11 | Pump plunger retainer | 1 |
| 12 | "O" ring | 1 |
| 13 | Dust proof ring | 1 |
| 14 | Pump reservoir | 1 |
| 15 | Copper washer | 1 |
| 16 | Steel bass 6 | 6 |
| 17 | Plunger connecting rod | 1 |
| 18 | Release valve screw | 1 |

| NO. | DESCRIPTION | QTY |
|-----|-------------------------|-----|
| 19 | Release valve seal | 1 |
| 20 | Steel ball 6.35 | 1 |
| 21 | Pin | 1 |
| 22 | Valve spring | 2 |
| 23 | Filler plug | 1 |
| 24 | Screw | 2 |
| 25 | Plug screw | 1 |
| 26 | Plug washer | 1 |
| 27 | Overload valve screw | 1 |
| 28 | Safety valve spring | 1 |
| 29 | Overload tapering valve | 1 |
| 30 | Filter net | 2 |
| 31 | Spring washer 8 | 2 |
| 32 | Nut 8 | 2 |
| 33 | Bolt M8*35 | 2 |
| 34 | Base | 1 |
| 35 | Plug screw | 4 |
| 36 | Cylinder bottom seal | 1 |
| 37 | Reservoir | 1 |
| 38 | Packing | 1 |
| 39 | Cylinder | 1 |
| 40 | Steel ball retainer | 2 |
| 41 | Cylinder top seal | 1 |
| 42 | "O" ring | 1 |
| 43 | Top nut | 1 |
| 44 | Extension screw | 1 |
| 45 | "O" ring | 1 |
| 46 | "O" ring returner | 1 |
| 47 | Ram header | 1 |
| 48 | Ram | 1 |
| 49 | spring | 2 |
| 50 | Spring plate | 2 |

| NO | PARTS NAME | QTY |
|-----|--------------------|-----|
| 1-1 | TUVE CONNECTOR | 1 |
| 1-2 | "O"RING 10*1.8 | 2 |
| 1-3 | REMOVABLE BASE | 1 |
| 1-4 | SPLIT WASHER | 1 |
| 2 | HEX-SOCKET SCREW | 3 |
| 3 | COVER | 1 |
| 4 | WASHER | 2 |
| 5 | AIR PUMP BODY | 1 |
| 6 | SPRING WASHER | 3 |
| 7 | SEAL | 2 |
| 8 | "O" RING 63.5*3.55 | 2 |
| 9 | SQUARE RING | 1 |
| 10 | PISTON | 1 |
| 11 | NUT M5 | 1 |
| 12 | BLOCK | 1 |
| 13 | PLUNGER | 1 |
| 14 | SPRING | 1 |
| 15 | NUT | 1 |
| 16 | PACKING GUIDE | 1 |
| 17 | NL RETAINER | 1 |
| 18 | "Y" SEAL | 1 |
| 19 | COVER | 1 |
| 20 | ADJUSTING NUT | 1 |
| 21 | PLUNGER COVER | 1 |

AIR MOTOR

