



Installation Guide

Series: Quadra
CBA-15**

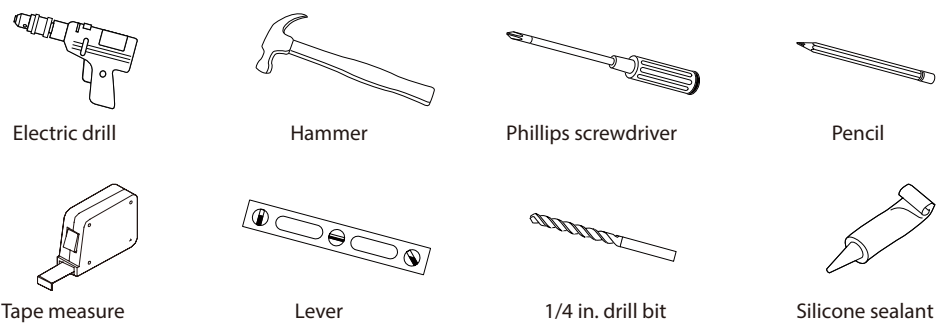
Installation Considerations
These products should be located and mounted to a wall stud. While it is possible to mount them to any surface, a stud mounted product will yield the best results. Keep this booklet and the receipt (or other proof of date and place of purchase) for this product in a safe place. The receipt is required to request warranty parts.
Please keep the box and packaging materials until your product is completely installed.

SAFETY TIPS
⚠ **WARNING!**
This item is not designed for use as a grab bar. Do not mount in locations where product is likely to be used as a grab bar.
⚠ **WARNING!**
Use caution when drilling into walls to avoid drilling into electrical and plumbing lines hidden within wall.

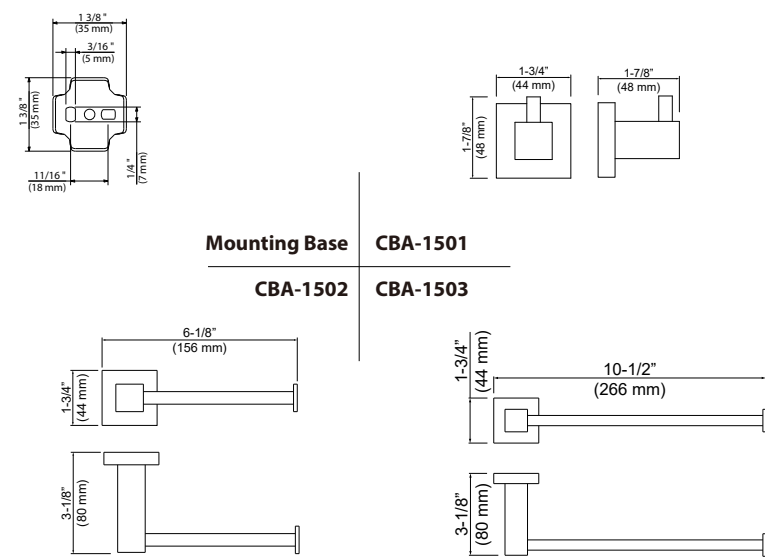
Cleaning Instructions:
To maintain and protect the fine luster of all bath accessories, clean with a soft, damp cloth only. DO NOT USE scrub pads, detergents or cleansers as they may harm the protective finish of your bath accessories.
Damage to the product caused by improper care or the use of improper cleaning agents is not covered by the warranty.

Warranty:
Warranted to be free from manufacturing defects for a period of one (1) year from the date of purchase.

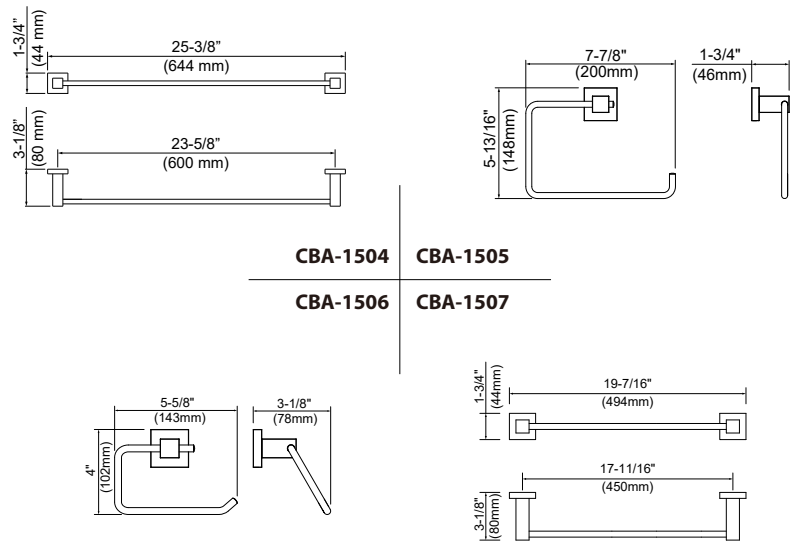
Tools you may need



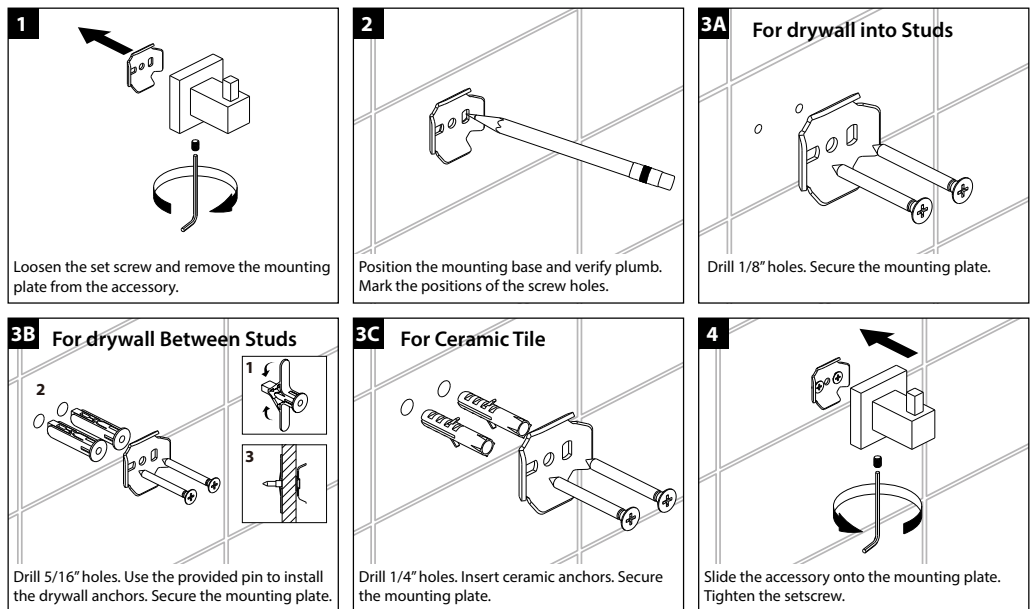
Dimensions



Dimensions



Single-Post Installation



Two-Post Installation

