

If orifice plugged will not build Hi pressure
 This can be tested by turning off the two
 breakers in the disc. box that power the
 PCU and manually turn the knob to the
 bottom position and listen to the high
 pressure charging system (15 second
 recharge).

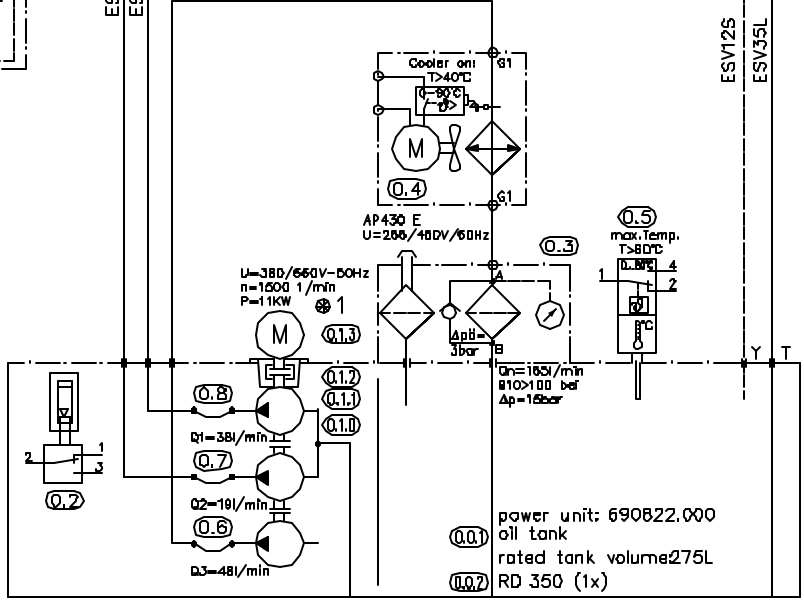
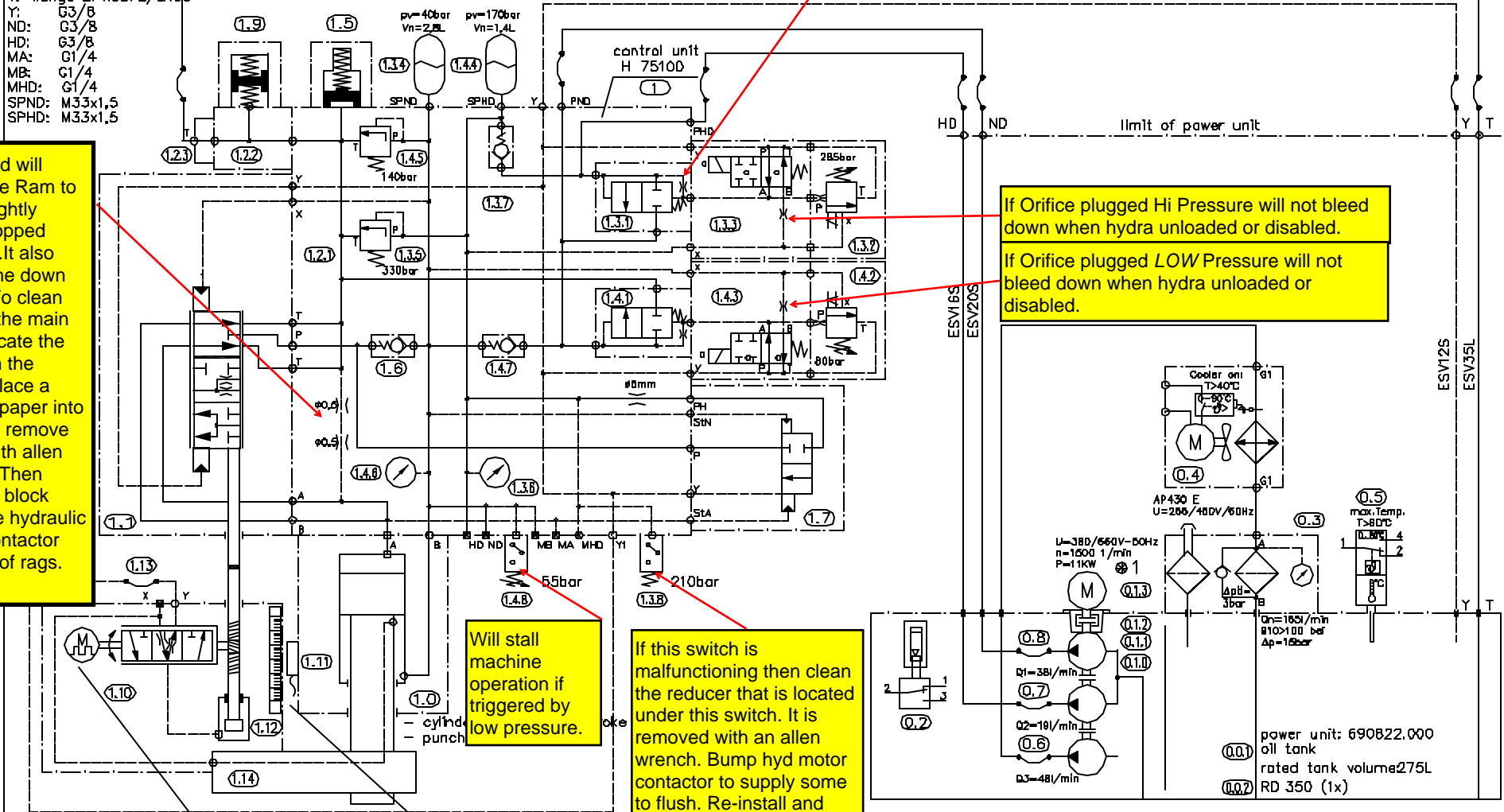
If plugged will
 cause the Ram to
 move slightly
 when stopped
 (neutral). It also
 effects the down
 stroke. To clean
 remove the main
 valve, locate the
 hole with the
 orifice, place a
 piece of paper into
 hole and remove
 orifice with allen
 wrench. Then
 flush the block
 using the hydraulic
 motor contactor
 and lots of rags.

If Orifice plugged Hi Pressure will not bleed
 down when hydra unloaded or disabled.
 If Orifice plugged LOW Pressure will not
 bleed down when hydra unloaded or
 disabled.

Will stall
 machine
 operation if
 triggered by
 low pressure.

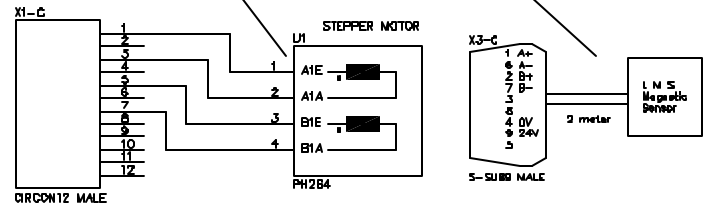
If this switch is
 malfunctioning then clean
 the reducer that is located
 under this switch. It is
 removed with an allen
 wrench. Bump hyd motor
 contactor to supply some
 to flush. Re-install and
 test.

port sizes:
 PND: G1/2
 PHD: G1/2
 T: flange BFW35PL/LK55
 Y: G3/8
 ND: G3/8
 HD: G3/8
 MA: G1/4
 MB: G1/4
 MHD: G1/4
 SPND: M33x1,5
 SPHD: M33x1,5



⊗1 electric motor supplied by customer

Für diese Zeichnung behalten wir uns alle Rechte vor, auch im
 Falle der Probierleistung oder der Auslieferung ohne
 Gewährleistung. Die Zeichnung ist Eigentum der
 Maschinenfabrik Hilti AG. Nachdruck, Verbreitung oder
 Nachahmung ist ausdrücklich untersagt.
 Änderungen sind nur durch schriftliche Anweisung
 zulässig.



| | | | | | |
|--|--|---------|------------|------------------|---------|
| | | Datum | Name | Zeichnungsname | Format |
| | | Bearb. | 26.05.2001 | D. Keller | A3 |
| | | Gepr. | 17.10.2001 | Müller | |
| | | Maßstab | | Unterbenennung | |
| | | | | HRE 20 to | |
| | | | | Zeichnungsnummer | Blatt |
| | | | | H 791311 | 1 |
| | | | | | Bl. ges |
| | | | | | 1 |