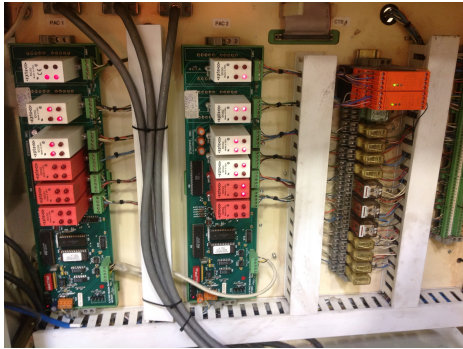


Comm Error (communication) Macintosh controller

One of the more common errors on the Mac controllers is communication error.

On POWER UP main disconnect..the PAC boards receive + 5 VDC which boots a prom chip located on the PAC board (board is located in the front cabinet....there are 2 of them).. 2 red LEDs will lite , the bottom LED indicates+5VDCis present and should remain lit. The other LED should flash and then go off. If the process doesn't successfully finish the second LED will stay on. This will result in an error on the MAC and operation will be halted.

Start by turning off main disconnect, then verifying all connections, especially the 4 pin connector on the bottom of PAC 1(left board) try turning the disconnect watching the lights. Remember you will never get rid of the error without reapplying power!



If that doesn't work check connection to the Phone port on the MAC

You can swap PAC1-PAC2 make sure you use the correct relays!! Then change switch settings before turning back on. If the problem goes away you may be OK to run as PAC 2 does not use this circuit. Then purchase replacement board for backup.

This board also can cause a lot of problems with switches being read by the MAC. The connectors on the sides are very problematic. Cleaning these will

help.

This board has fuses corresponding to inputs/outputs.....they are easily replaceable, and should be a spare on one or both boards

The relays should be replaced as a preventative measure every few years...they are about \$75.00 each and will help you avoid frustrating intermittent problems

Anything I write while based on years of field experience can be improved upon. If you solve issues, or have suggestions please don't hesitate to Email me at keithcoffee@gmail.com. I will be happy to incorporate additional information