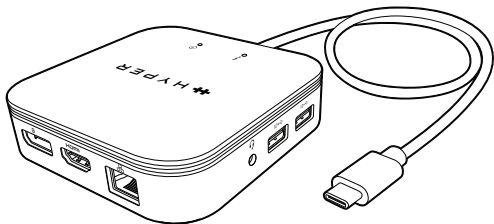




HyperDrive[®]

Thunderbolt[™] 3 Mobile Dock



USER GUIDE

Table of Contents

Safety Instructions	1
Copyright	1
Trademarks	1
Regulatory Compliance	2
FCC Conditions	2
CE	2
WEEE Information	2
Introduction	3
Package Contents	3
System Requirements	4
Features	4
Product Overview	5
Connection	8
Audio Configuration	11
Specifications	12

Before attempting to connect, operate or adjust this product, please read and save the User's Manual. Do note, the style of the product shown in this User's Manual may be different from the actual unit due to the production of various models.

Safety Instructions

Always read the safety instructions carefully:

- Keep this User's Manual for future reference
- Keep this equipment away from humid locations
- If any of the following situations arise, please have the product checked by a service technician:
 - The product has been exposed to moisture.
 - The product has been dropped and/or damaged.
 - The product has an obvious sign of breakage.
 - The product has not been working or you can't get it to work according to the User's Manual.

Copyright

This document contains proprietary information protected by copyright. All rights are reserved. No part of this manual may be reproduced by any mechanical, electronic or other means, in any form, without prior written permission of the manufacturer.

Trademarks

All trademarks and registered trademarks are the property of their respective owners or companies.

Regulatory Compliance

FCC Conditions

This equipment has been tested and found to comply with Part 15 Class B of the FCC Rules. Operation is subject to the following two conditions: (1) This device may not cause harmful interference. (2) This device must accept any interference received and include interference that may cause undesired operation.

CE

This equipment is in compliance with the requirements of the following regulations: EN 55032/EN 55024: CLASS B

WEEE Information

For EU (European Union) member users: According to the WEEE (Waste electrical and electronic equipment) Directive, do not dispose of this product as household waste or commercial waste. Waste electrical and electronic equipment should be appropriately collected and recycled as required by practices established for your country. For information on recycling of this product, please contact your local authorities, your household waste disposal service or the shop where you purchased the product.



Introduction

The Thunderbolt™ 3 Mobile Dock is a DPD (Dual Powered Device) designed for bus-powered or self-powered dual-mode usage, and it supports one DP 1.4 and one HDMI 2.0 output with HDR. With the Dock, you can extend your computer to more USB peripherals, an Ethernet network, or a speaker and microphone via the Thunderbolt™ 3 USB-C interface. Do note, the USB-C plug is reversible, so you can plug it in whichever way you please. With the upstream charging function through the USB-C interface, you can charge the host device at up to 60W with USB-C PD. With the Thunderbolt™ ports, the docking station enables you to enjoy blazing fast data transmission between USB peripherals.



The Adopted Trademarks HDMI, HDMI High-Definition Multimedia Interface, and the HDMI Logo are trademarks or registered trademarks of HDMI Licensing Administrator, Inc. in the United States and other countries.

Package Contents

- Thunderbolt™ 3 Mobile Dock x 1
- User's Manual

System Requirements

- Windows® 10
- Mac OS® (macOS 10.15.3 above)

Features

- **Upstream Port**

- 1 x USB-C Thunderbolt™ 3

- **Downstream Output**

- 2 x USB-A 3.1 Gen 2*
- 1 x USB-C (PD power in only)
- 1 x RJ45 Gigabit Ethernet
- 1 x 3.5mm Audio Combo Jack

- **Video Output**

- 1 x DP1.4 (8K@30Hz)
- 1 x HDMI 2.0 (4K@60Hz)

- **Upstream PD charging**

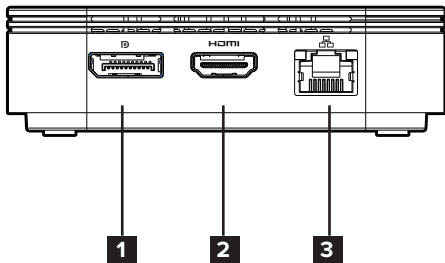
Support 5 /9 /15 /20V, it will be reserved 15W for the Dock

- PD 45W with power adapter 60W
- PD 60W with power adapter 60W higher

* When in self-powered mode, it supports USB 3.1 Gen 2 x 2.
When bus-powered, it supports USB 3.1 Gen 2 x 1 and USB 2.0 x 1.

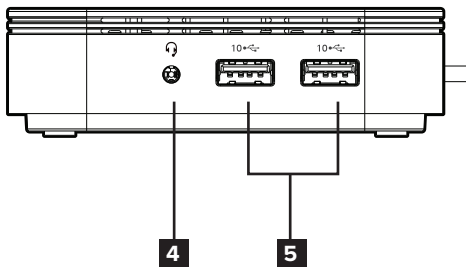
Product Overview

Front



Item	Description
1. DisplayPort 1.4	Connect to the DP monitor
2. HDMI 2.0 port	Connect to the HDMI monitor
3. RJ45 port	Connect to an Ethernet adapter

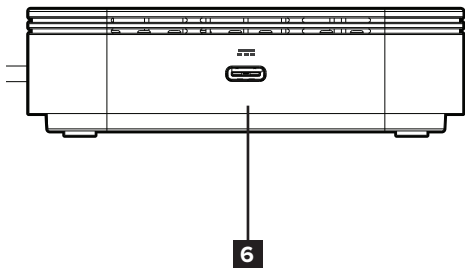
Right Side



Item	Description
4. 3.5mm Audio Combo Jack	Connect to Headset
5. USB-A 3.1 Gen 2 x 2*	Connect to USB devices

* When in self-powered mode, it supports USB 3.1 Gen 2 x 2.
When bus-powered, it supports USB 3.1 Gen 2 x 1 and USB 2.0 x 1.

Left Side

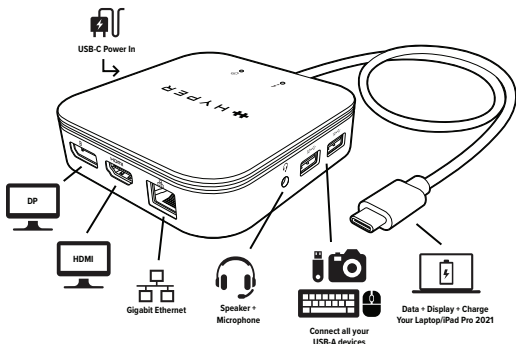


Item	Description
6. USB-C PD power in**	Connect to the USB-C power adapter

** USB-C Power adapter should be 60W or higher.

Connection

To connect the USB peripherals, Ethernet, speaker, and microphone, follow the illustrations below:



NOTE: The following steps and screenshots may vary slightly from each operating system

Windows® 10

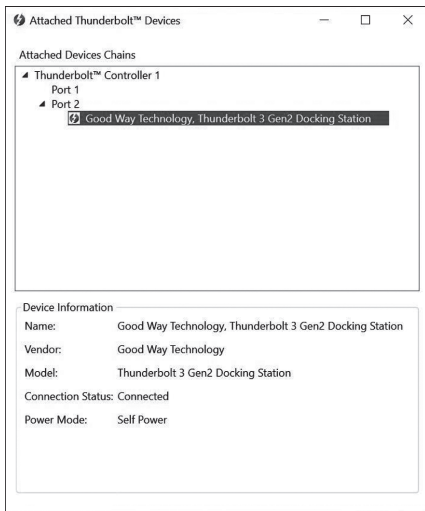
1. Select Always Connect to approve the device you wish to connect, then click OK.



2. To make sure your device has been connected, click on the bottom corner of your desktop and open Thunderbolt™ Software.



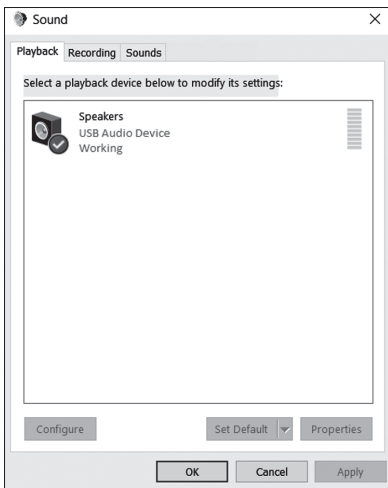
3. Once that window is open, you'll see the available ports and if your device has been connected.



Audio Configuration

By default, when the docking station is connected to a computer, the audio configuration may be changed to USB (Multimedia) Audio Device automatically (this setting depends on models). If it does not work, follow the steps below to troubleshoot.

1. Head to your device's Control Panel and then select the Hardware & Sound icon.
2. Click Sound > Manage Audio Devices and then select USB Audio Device.



Specifications

User Interface	Upstream	USB-C Thunderbolt™ 3 x 1
	Downstream	DP1.4 connector x 1
		HDMI 2.0 connector x 1
		USB-C x 1 (Power in only)
		USB-A 3.1 Gen 2 x 2*
		RJ45 connector x 1
		3.5mm Audio Combo Jack x 1
Video	Resolution	Single 8K@30Hz or Dual 4k@60Hz
Ethernet	Type	10/100/1000 BASE-T
Power	Power Mode	Bus-powered/Self-powered
	Max. PD Charging	60W
Working Environment	Operation Temperature	0~35 degree
	Storage Temperature	-20~70 degree
Compliance		CE, FCC, UKCA, RoHS

*When in self-powered mode, it can support USB 3.1 Gen 2 x 2.

*When bus-powered, it can support USB 3.1 Gen 2 x 1 and USB 2.0 x 1.



© 2023 Hyper Products Inc
All rights reserved.