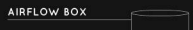
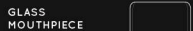
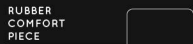
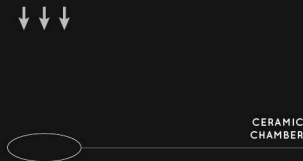
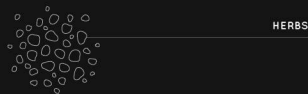
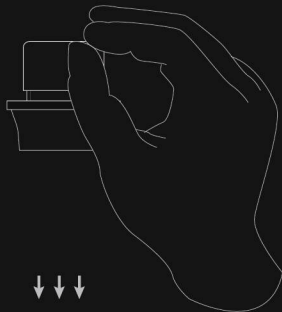


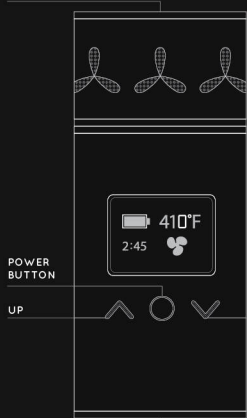
PLUG. PACK. PUFF.

1. Charge your AirvapeXS using the enclosed cable. Insert charging cable with USB logo facing up! Inserting the cable the opposite way can damage the port.
2. Pack the chamber lightly. It is recommended that you grind your herbs before packing the chamber.
3. Press the power button 3 times quickly to turn the device on/off. Adjust temperature using the up and down buttons. Vibration indicates readiness.
4. Inhale through the mouth piece and enjoy. You do not need to hold down any buttons in order to inhale.
5. The safety shutoff timer will automatically turn the unit off after 3 minutes. You can also choose to turn the unit off at any time by pressing the power button 3 times.



THESE PARTS ARE HELD TOGETHER BY THE SILICONE BASE

CERAMIC CHAMBER



MICRO USB PORT

TIPS & TRICKS

1. Use the brush to clean the chamber after each use, while device is still warm.
2. Change F°/C° by holding down the power button and pressing the "down" button.
3. Change auto turn-off time by holding down the power button and pressing the "up" button.
4. Find complete User Manual and video instruction at AirVapeUSA.com
5. Visit us online to register your product - get the latest vaping news and accessories.



AIRVAPEUSA

