

Rogue River Organics

Talent, OR 97540

Sample 150-082323-186

Ice Cream Cake (Hemp Flower)

Batch/Lot # ICC645.73

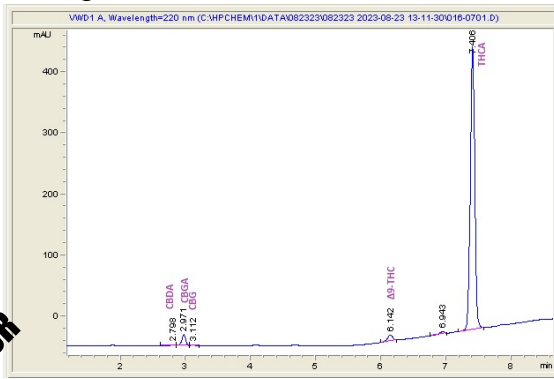
Sample Submitted: 08-23-2023; Report Date: 08-26-2023

Ice Cream Cake (Hemp Flower)

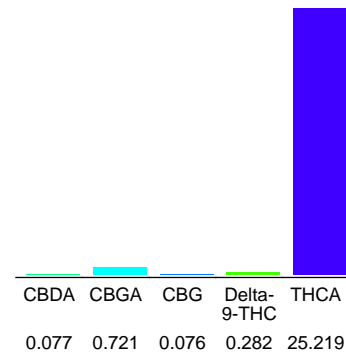
Plant Material: Flower

Batch/Lot # ICC645.73

### Chromatogram



### Cannabinoid Profile



### Cannabinoid Profile by HPLC

0.28%

Delta-9-THC

0.00%

CBD

26.38%

Total Cannabinoids

Cannabinoid	% wt	mg/g
CBDA	0.077	0.77
CBGA	0.721	7.21
CBG	0.076	0.76
Delta-9-THC	0.282	2.82
THCA	25.22	252.19
<b>Total Cannabinoids</b>	<b>26.38</b>	<b>263.8</b>
<b>Calculated Total THC</b>	<b>22.40</b>	<b>223.99</b>
<b>Calculated CBD Yield</b>	<b>0.07</b>	<b>0.68</b>
Calculated Total THC = Delta-9-THC + 0.877 * THCA		
Calculated Maximum CBD Yield = CBD + 0.877 * CBDA		

Marin Analytics, LLC

250 Bel Marin Keys Blvd, Suite D4  
Novato, CA 94949

833-321-TEST / info@marinanalytics.com

*Sara Biancalana*

Sara Biancalana  
Chief Scientist

This sample has been tested by Marin Analytics, LLC using valid testing methodologies and a quality system. Values reported relate only to the sample tested. Marin Analytics, LLC makes no claims as to the efficacy, safety, or other risks associated with any detected or non-detected levels of any compounds reported herein. This Certificate shall not be reproduced except in full without the written approval of Marin Analytics, LLC. Copyright 2023 Marin Analytics, LLC All Rights Reserved.