



5012 – 2013-PRESENT, FORD TRANSIT, TALL ROOF, OVERHEAD SHELF

Version 1.0

General Notes

- For the most up to date and current instructions, please visit our website at www.vancompass.com
- Please read all instructions thoroughly before starting installing Van Compass products.
- This is a bolt on overhead shelf that can be installed with simple hand tools. Two ¼" holes will need to be drilled in the headliner for installation.
- Installation of this shelf requires access to the back of the front portion of the headliner. Thoroughly read through these instructions prior to installation to ensure your interior build allows for access to this portion of the headliner.

Parts List

5012 – 2013-PRESENT, FORD TRANSIT, TALL ROOF, OVERHEAD SHELF

- (1) 501201-01 FORD TRANSIT, TALL ROOF, OVERHEAD SHELF, MAIN PLATE
- (2) 501202-01 FORD TRANSIT, TALL ROOF, OVERHEAD SHELF, REAR SUPPORT TAB
- (2) 501202-02 FORD TRANSIT, TALL ROOF, OVERHEAD SHELF, HEADLINER BACKING WASHER
- (3) BHCS02-10-SS BUTTON HEAD CAP SCREW, ¼-20 X 1.0" STAINLESS STEEL
- (2) BHCS02-02-SS BUTTON HEAD CAP SCREW, ¼-20 X ½" STAINLESS STEEL
- (3) FNS-02 FLANGE NUT, SERRATED, ¼-20
- (2) NNC-02 NYLOCK NUT, ¼-20
- (5) WFS-02 FLAT WASHER, ¼" STAINLESS
- (2) ST8-03 SELF TAPPING LATH SCREW, #8 PHILLIPS ¾" LONG

Tools Needed

- Simple hand tools:
 - Basic wrench and socket set:
 - Metric Sizes: 7MM
 - Allen wrench: 9/32"
 - T-25 Torx
- Automotive trim removal tool
- Phillips screw driver, small flat blade screwdriver
- Drill with ¼" (7mm) diameter wood or metal drill bit (for drilling through headliner)

- 2 people are required for removal, 3 people or some form of vertical supporting tool will be needed for installation. For example:

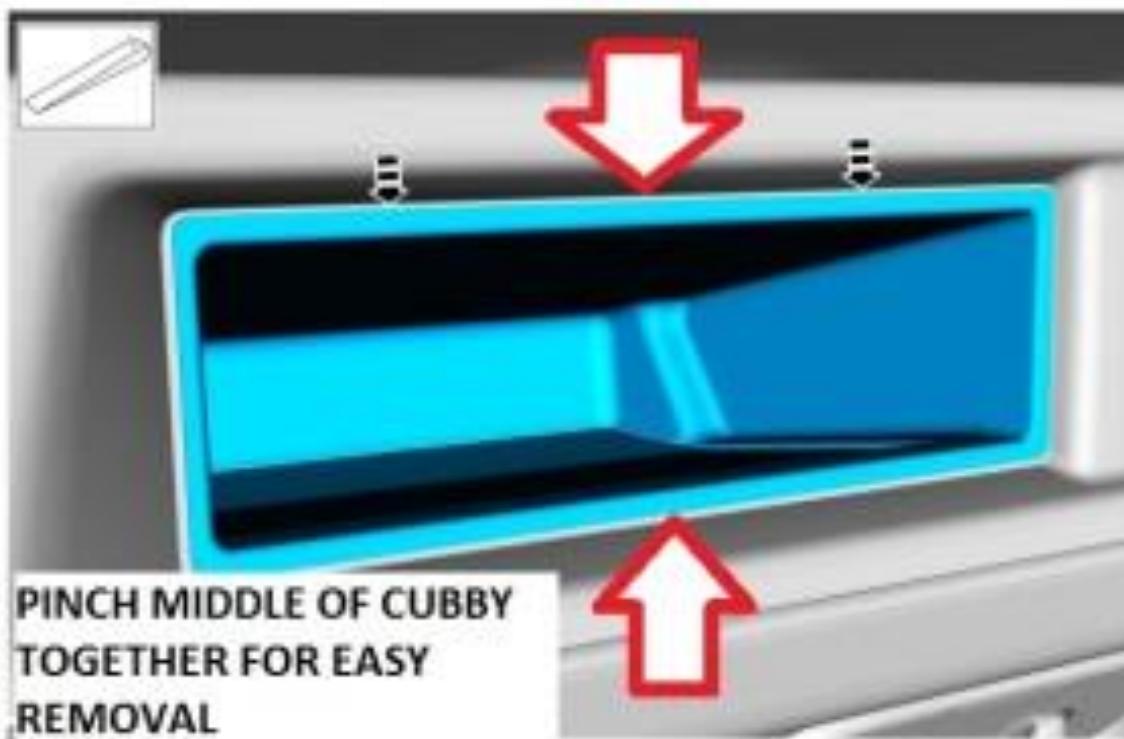
https://www.northerntool.com/shop/tools/product_200430689_200430689?cm_mmc=Google-pla&utm_source=Google_PLA&utm_medium=Material%20Handling%20%3E%20Hoists%20%26%20Lifts%20%2B%20Cranes%20%3E%20Quick%20Support%20Rods&utm_campaign=Task%20Tools&utm_content=253979&gclid=EAlaIqobChMIn7Hc38WM3wIVSIGzCh3EKAvyEAQYCiABEgLUJfD_BwE

Approximate Installation Time

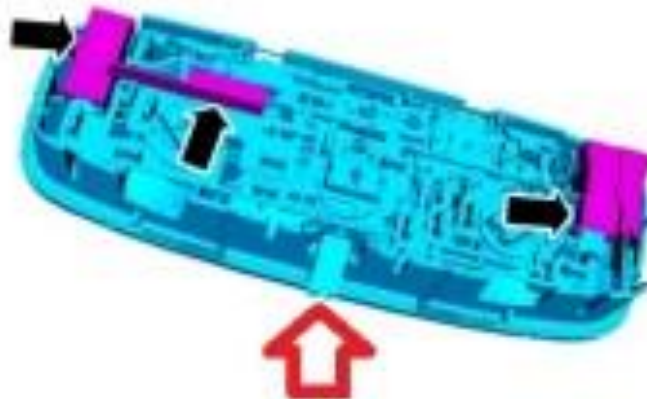
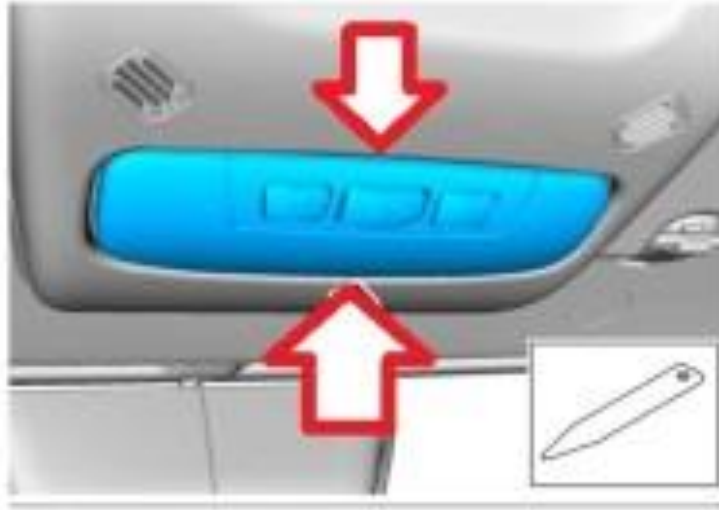
- 1-2 hrs

Installation

- 1) Before starting installation, make sure you have access to behind the front portion of the headliner. See step 18-19 for reference. Remove the factory Styrofoam blocks at this time if equipped if they are still installed in the van.
- 2) Remove the overhead console storage bins by pinching them together in the middle and pulling them out. An automotive trim removal tool is helpful in prying them free.



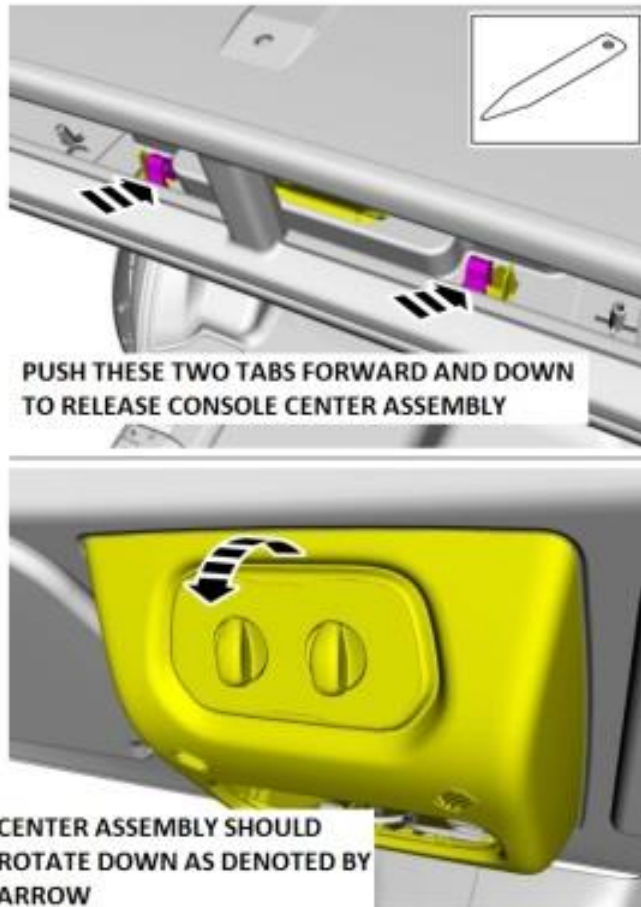
- 3) Remove the dome lamp assembly. There are metal spring clips securing the dome lamp to the overhead console. The clips are located in the middle of the dome lamp. The arrows in the image below denote approximate location of spring clips.
 - a. Once the dome lamp is free of the overhead console, disconnect the 3 electrical connectors and fully remove the dome lamp.



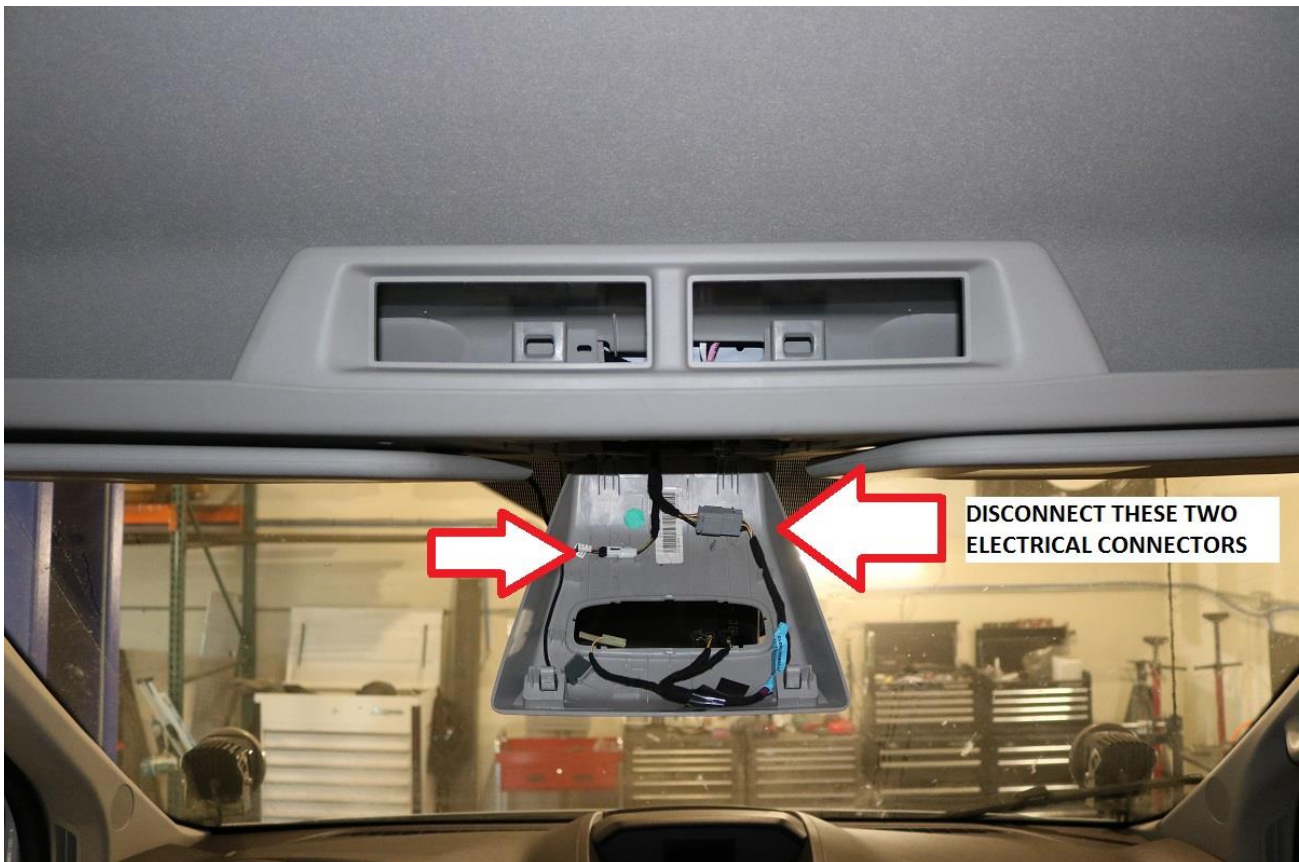
E173898

SPRING CLIP

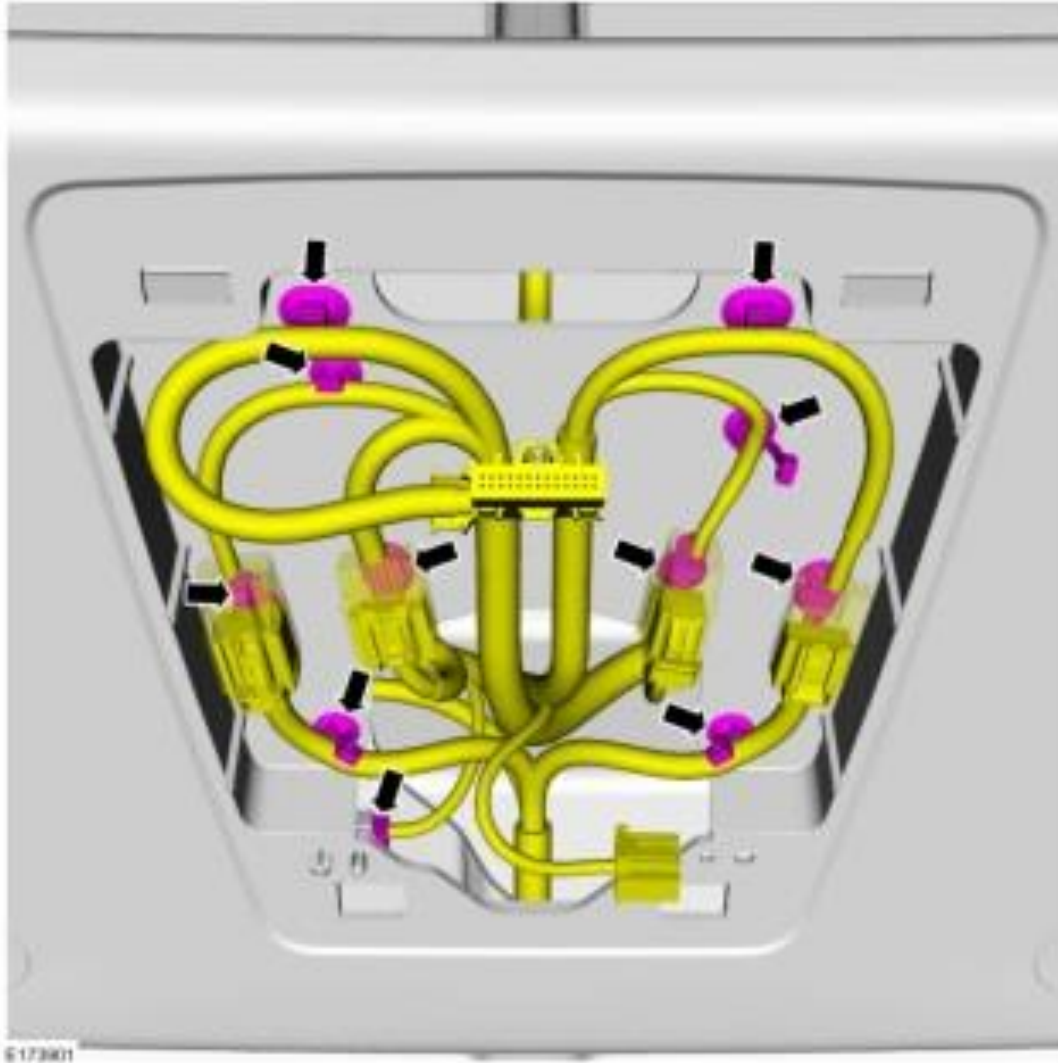
- 4) Look through the holes of the overhead console storage bins and locate the two tabs / plastic fingers which secure the overhead console center assembly. Release these two tabs by pushing forward and down so the overhead console center assembly can rotate downwards. These two tabs are stiff and require a good amount of pressure to release them. Use a large flat blade screwdriver to aide in depressing the tabs.



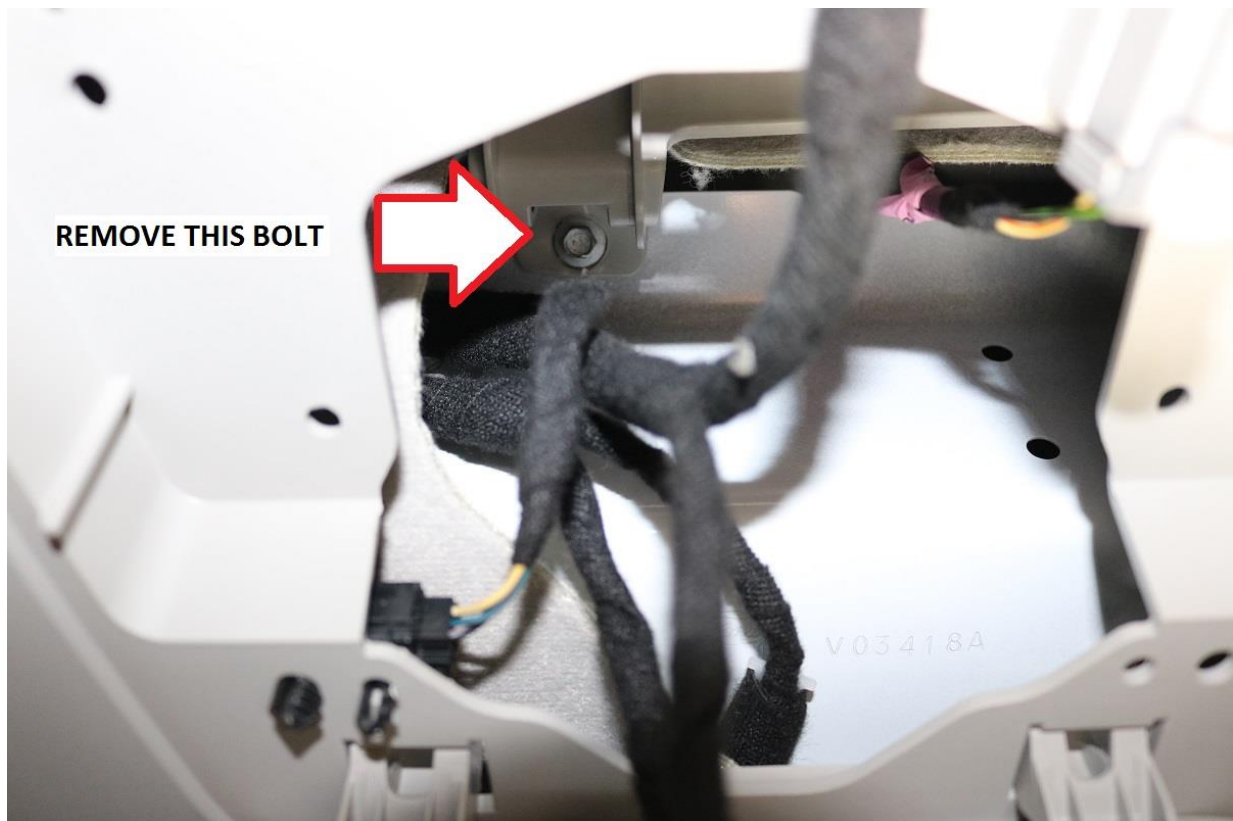
- 5) Disconnect the 2 electrical connectors (3 connectors if equipped with rear A/C) and remove the center console assembly from the vehicle.



- 6) Unplug all remaining electrical connectors in the in the center of the overhead console. Separate all wiring harness retainers so the wiring harness can pass through the overhead console when removed. Use an automotive style trim removal tool to separate wiring harness retainers. See image below for all locations denoted by the black arrows.
- a. Note- the image below shows a maximum amount of connectors / wiring, vehicles without rear A/C will have half as much wiring in this location.



- 7) With the center wiring un-plugged and free from the overhead console, peer through the center opening and locate the 7mm bolt head which secures the center of the overhead console to the roof. Remove this bolt with a 7mm socket.



- 8) Remove the sun visors on both sides of the vehicle. Use a small screw driver to remove the trim clip covering the mounting bolt at the sun visor pivot / hinge.
 - a. Use a T25 torx bit to remove the bolt securing the sun visor.



- 9) With the sun visor mounting bolt removed, rotate the sun visor out of its mounting hole and disconnect the wiring for the vanity light.
- 10) Locate the 4 trim screw covers running along the front edge of the overhead console near the top of the windshield. Remove these trim covers with a small pick or screwdriver. Note, these covers can be

challenging to remove without distorting them. Don't get mad at us, get mad at Ford. The 4 trim covers are denoted by the black arrows in the image below.

- a. Once the covers are removed, remove the 4 screws in each pocket using a 7mm socket.



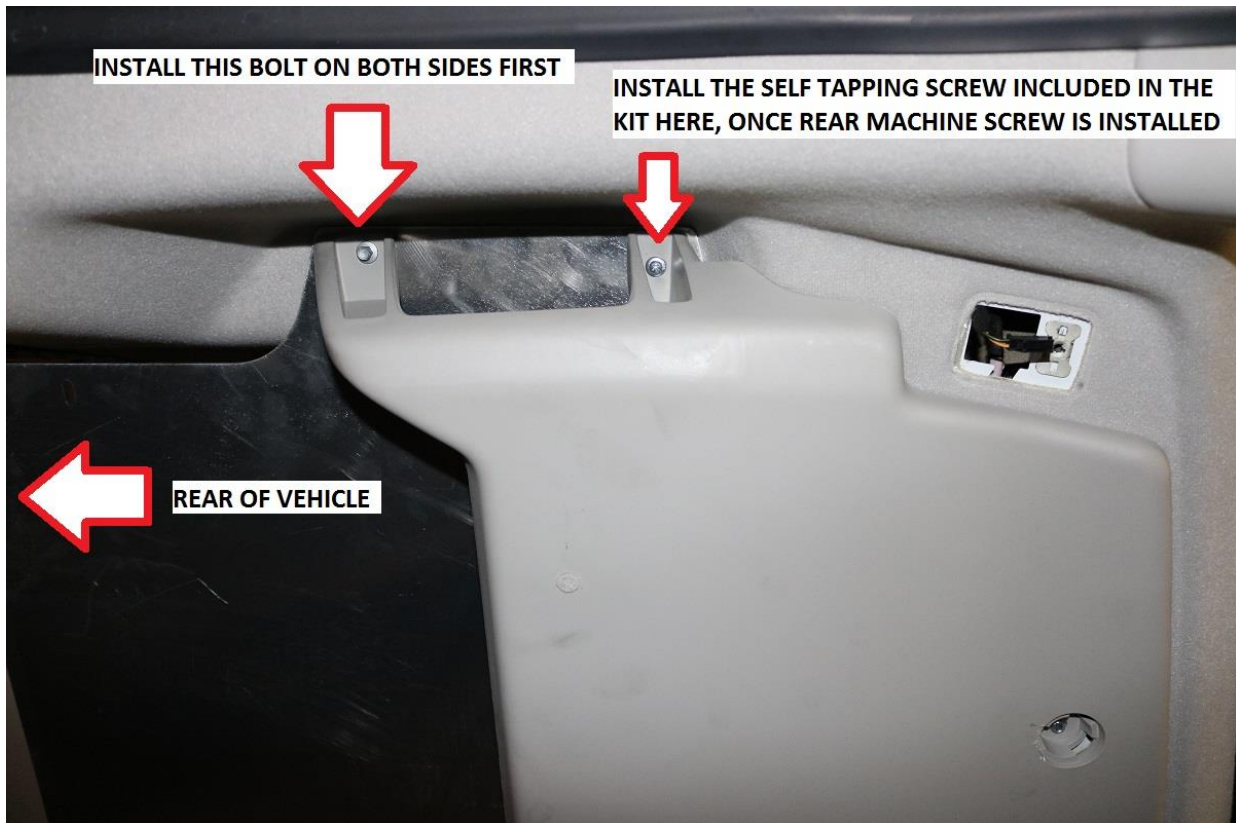
- 11) At this point, have a helper come support the overhead console and remove the 4 outer bolts near the upper grab handle at the outer edge of the overhead console. See image below for reference location of the bolts. Use a 7mm socket for bolt removal.



12) At this point, two helpers or a vertical support tool will be needed to fit the overhead main shelf to the vehicle.



- 13) Fit the overhead console back into the vehicle and install the rear outer mounting bolts. These are the machine screw type bolts, not the self tapping ones. Install the bolts with a 7mm socket on both sides.
- Once the rear bolt is installed, install the $\frac{3}{4}$ " long self tapping #8 phillips screw included in the hardware kit in the front outer mounting hole.
 - See image below for reference.



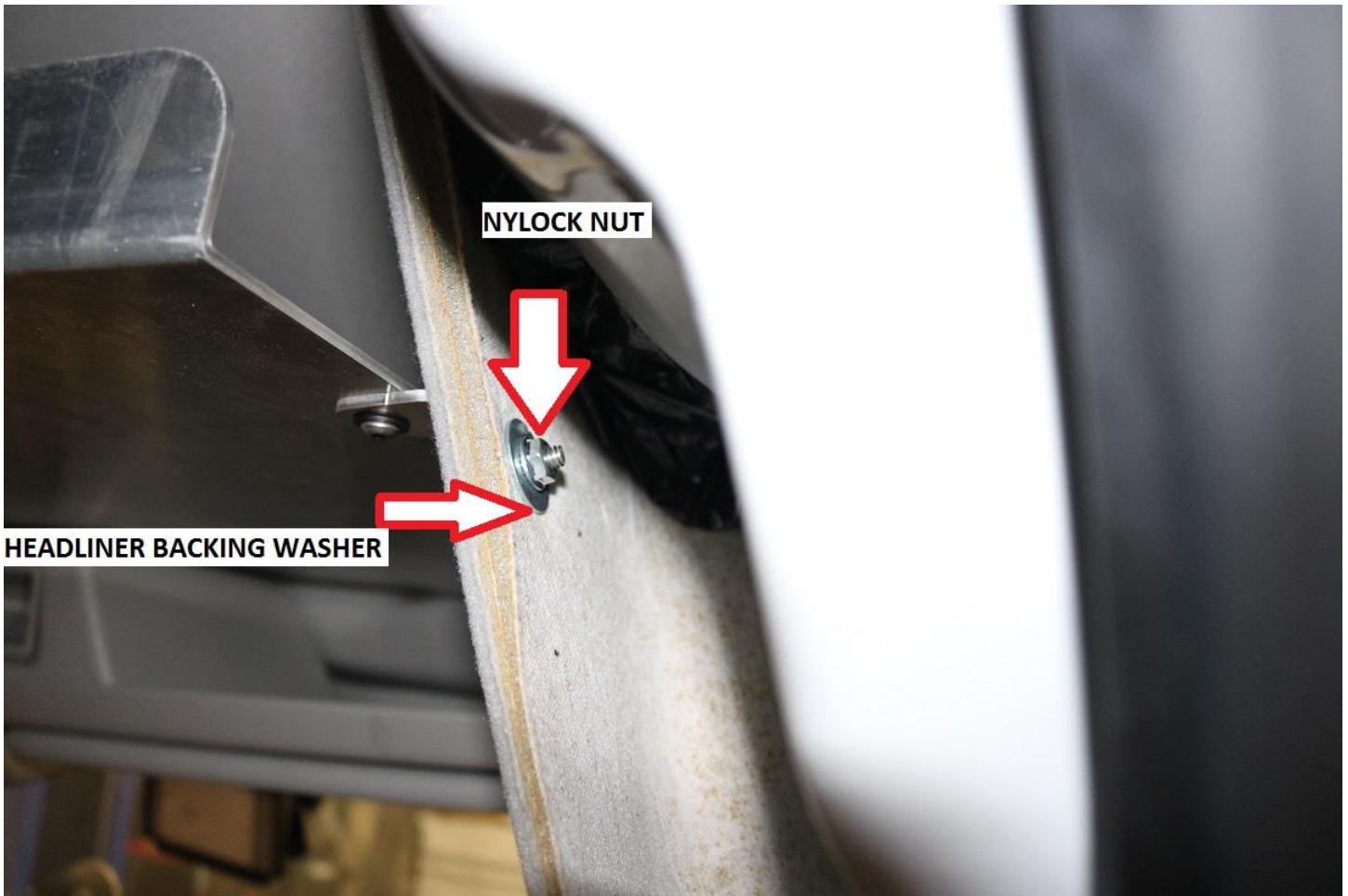
- 14) Once the outer bolts are installed, install the center mounting bolt previously removed in step 7. Again, use a 7mm socket for installation.
- 15) Next, drop the ¼-20 x 1" long button head bolt included in the kit into the center mounting hole of the shelf which will secure the overhead console to the overhead shelf. Use a washer under the button head and install the flange nut on the underside of the console.
- Snug this bolt but do not really crank on it as the console is plastic. Use a 9/32" allen wrench to tighten.



- 16) At this point, reassemble all other components removed from steps 2-11 in the reverse order of removal.
- Note, torque spec for all factory hardware is 53 in-lbs (6 N.m) We suggest snugging tight using simple hand screw drivers and nut drivers to avoid stripping threads.
- 17) With the overhead console and corresponding items reinstalled, fit the rear support tabs as shown below. Note, the tabs can only be installed one way for proper fitment. The rounded side of the tab is to be bolted to the overhead shelf.
- Fit the tab to the overhead shelf using the included ¼-20 x ½" long button head bolts provided in the kit. Be sure to use a button head under the bolt and secure to the panel with the included flange nuts.
 - Position the support tab so it is flush against the headliner and tighten the bolt using a 9/32" allen wrench.



- 18) Using the rear support tab as a drill guide, drill through the headliner with a $\frac{1}{4}$ " (7mm) diameter drill bit.
- 19) Install the included $\frac{1}{4}$ -20 x 1.0" long button head bolt with a washer under the bolt head through the rear support tab and headliner.
 - a. Install the headliner backing washer and nylock nut on the backside of the headliner. Snug using a $\frac{7}{16}$ " wrench and $\frac{9}{32}$ " allen just to the point where the foam backside of the headliner begins to distort in.



20) Re-fit the Styrofoam blocks removed in step 1 if desired.

Installation is Complete

RELEASE OF LIABILITY

I, the customer, do hereby release and forever discharge Van Compass LLC, their agents, employees, successors and assigns, and their respective heirs, personal representatives, affiliates, successors and assigns, and any and all persons, firms or corporations liable or who might be claimed to be liable, whether or not herein named, from any and all claims, demands, damages, actions, causes of action or suits of any kind or nature whatsoever, whether known or unknown, fixed or contingent, which I now have or may hereafter have or claim to have, as a result of or in any way relating to the following: Parts sold & installed by Van Compass LLC or parts sold & installed by end-user; any parts sold online, any parts sold online or installed by a re-seller, any parts installed by an installation shop.

It is understood and agreed that this payment is made and received in full and complete settlement and satisfaction of the aforesaid actions, causes of action, claims and demands; that this Release contains the entire agreement between the parties; and that the terms of this Agreement are contractual and not merely a recital. Furthermore, this Release shall be binding upon the undersigned, and his respective heirs, executors, administrators, personal representatives, successors and assigns. This Release shall be subject to and governed by the laws of the State of Idaho.

PRODUCT SAFETY WARNING:

Van Compass LLC strongly recommends the installation of products be done by a certified mechanic. If this does not occur, be certain the person(s) installing the product read, understand and follow all instructions and warnings pertaining to the application before installation. Do not add, alter, or fabricate any factory or aftermarket parts to increase vehicle height over the intended height of the Van Compass LLC product purchased. Mixing component brands is not recommended.

Installation of suspension lift kits or any other lifting kits or devices will raise the center of gravity. For this reason, Van Compass LLC urges that extreme caution be used when encountering driving conditions which may cause vehicle imbalance. Furthermore, the driver's field of vision and judgment will not be as good due to the height of the vehicle. Due to the installation of larger tires, the speedometer will read slower than the actual speed being traveled and more distance will be required to stop the vehicle. It is the owner's responsibility to caution and warn any potential driver of the vehicle about these driving and handling conditions. Van Compass LLC will not be held liable or responsible for damages or personal injuries resulting from the use of lifting devices and or related products. The tires and rims should be changed to sufficiently increase the vehicle's total overall width and stability to help accommodate lifting devices.

Van Compass LLC aftermarket suspension products and accessories modify a vehicle for uses which exceed conditions anticipated by the vehicle manufacturer. The uses include the high performance demands required during off-road. These conditions vary in the degree of extremity and cannot be controlled by the vehicle or product manufacturer. If the components within the suspension system or accessories become worn due to frequent and/or extreme use, the safety and reliability of the vehicle is at risk. The maintenance of aftermarket equipment to ensure the vehicle occupants safety is entirely your responsibility. Do not purchase Van Compass LLC products unless you are willing to accept this responsibility. Do not install any Van Compass LLC suspension products or accessories unless you feel competent at installing the product without causing present or future injury to yourself or other vehicle occupants; seek an authorized installation center.

Most states have some type of law limiting vehicle height. The amount of lift allowed, and how the lift can be achieved, varies greatly. Several states offer exemptions for farm and commercial registered vehicles. It is the vehicle owner's responsibility to check state and local laws to ensure that their vehicle will be in compliance. Van Compass LLC reserves the right to make changes in design, materials and specifications as deemed necessary without prior notice and without assuming obligation to modify any product previously manufactured. Obligation or liabilities will not be assumed with respect to similar products previously advertised.

This Release of Liability and Product Safety Warning has been read and fully understood by the undersigned and has been explained to me.