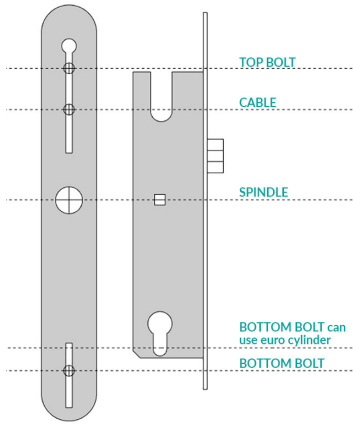


Installation instructions for a multi-point lock mechanism. There are many types of multi-point lock, these instructions will apply to most but not all locks. Generally, double spindle locks are not compatible. If in doubt, get in touch. The Slimline lock will fit doors between 40mm and 80mm in thickness, for 80mm to 100mm, purchase a spindle extension kit.



OVERVIEW

The keypad is secured by two bolts that fix through the door. The bottom bolt can use the existing hole below the euro cylinder. The top bolt & cable might require new holes.



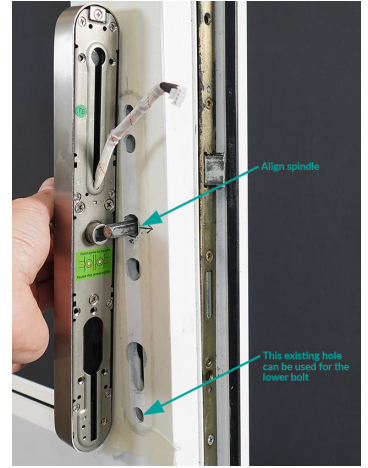
STEP 1

With the door closed, measure from the centre of the handle to the edge of the doorstop. It must be at least 21mm to ensure the smart lock will fit on the door.



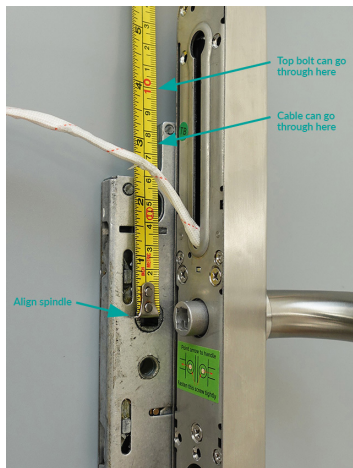
STEP 2

Open the door and remove the existing handles and euro cylinder lock. The euro cylinder is not required as the Slimline has a built in key override. Leave the spindle in place.



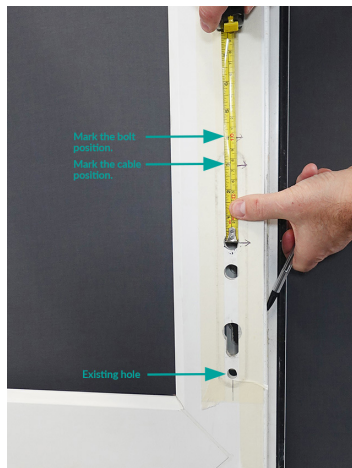
STEP 3

Apply masking tape to both sides of the door and mark the position of the spindle. Above shows how the keypad will align on the door. The top and bottom bolts and cable position are adjustable.



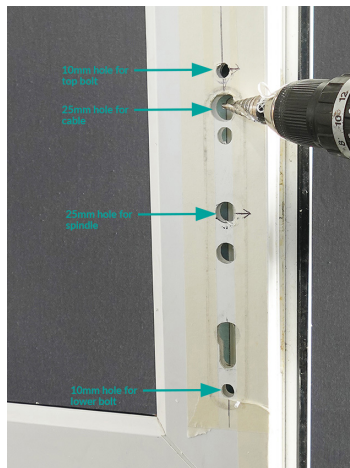
STEP 4

Remove the multi-point mechanism from the door and lay flat. Align the lock case. Two holes are required, 25mm hole for the cable and a 10mm hole for the top bolt. The holes should be above the lock case but align with the sliding recess on the lock. In this instance we will position the cable at 75mm and the top bolt hole at 100mm.



STEP 5

Mark these measurements on both sides of the door. We can use one of the existing holes for the cable but we need to increase the size of the cable hole.



STEP 6

Drill the holes from both sides of the door

- BOLT HOLES - 10mm hole
- CABLE & SPINDLE - 25mm holes

The hole for the spindle should be increased to 25mm. The cable hole needs to allow for any excess cable to be pushed back in the frame cavity.



STEP 7

Remove the masking tape from the door. Fit the multi-point lock mechanism back into the door.



STEP 8

Check that the handles are facing the correct direction, if not insert the 4mm allen key, unscrew fully and turn the handle 180 degrees and tighten.

IMPORTANT - even if you dont need to change the handle direction, insert the allen key and check the bolts are fully tightened.

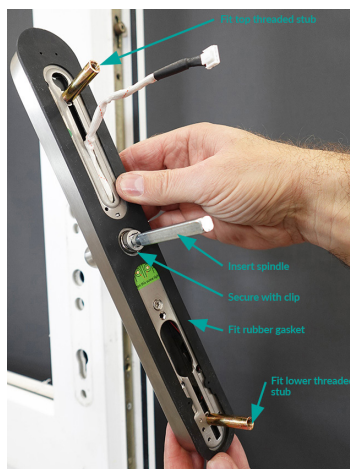


STEP 9

IMPORTANT - Make sure that the arrow on the spindle receptor faces the handle.

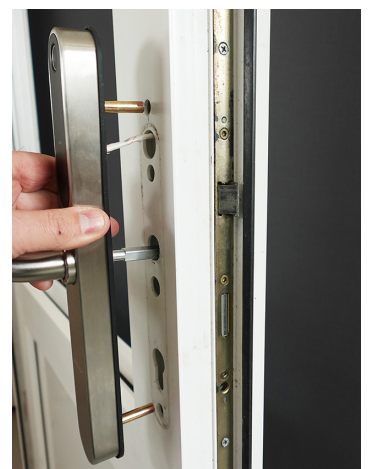
Select the correct length spindle:

Door thickness	Spindle
40mm to 50mm	- 55mm
50mm to 60mm	- 65mm
60mm to 70mm	- 75mm
70mm to 80mm	- 85mm



STEP 10

Fit the correct length spindle and clip that secures the spindle. Insert the two brass threaded stubs, these pair with the short flat head bolts. They slide along the recesses making alignment easier. Adjust so they line up with the holes in the door, then tighten fully. Fit the rubber gasket.



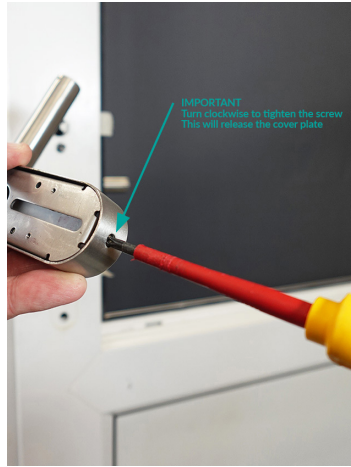
STEP 11

Offer up the keypad to the door. Make sure that both stubs are aligned properly and tight. Locate the spindle through the lock case. Feed the cable through the door cavity to the other side. Make sure the cable does not bend back on itself.



STEP 12

Use some tape to temporarily hold the keypad in position.



STEP 13

Take the inner lock handle and remove the cover. There is a screw on the underside.

IMPORTANT, this screw is in reverse, turn clockwise fully and then remove the cover.



STEP 14

Place the lock body on the door, thread the cable through the battery holder. Check if the cable is long enough to plug in, if not then the extension cable is required.



STEP 15

Connect the extension cable and carefully tuck the connector back into the door cavity.



STEP 16

Attach the rubber gasket to the internal lock body.



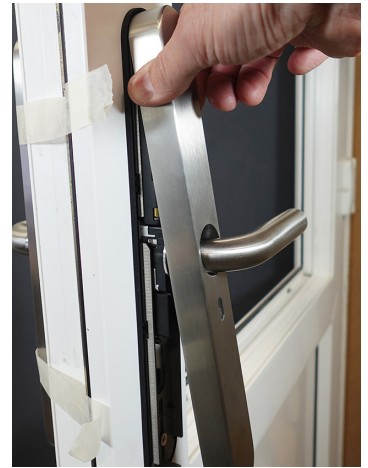
STEP 17

Place the lock body on the door, locating the spindle. If the spindle is too short, then use the next size up. Feed the cable through the battery pack. Select the correct length bolts and locate the threaded stubs. Secure tightly.



STEP 18

Plug the cable in and insert 4 x AA batteries (not included)



STEP 19

Fit the cover, it hooks in at the top.



STEP 20

Remember that the screw tightens in reverse, so turn anticlockwise.

Remove the masking tape.



STEP 21

Test from the inside by lifting the handle, the hooks or rollers will engage. Now pull the handle down, the latch and hooks should retract fully. Lift the handle again to 'lock' the door. Some multi-points will activate the deadbolt. Just make sure that everything retracts.



STEP 22

By default, pulling down the outside handle will do nothing. Insert the emergency key and turn 90 degrees, pull the handle down and it should retract the hooks and latch. Turn the key back and remove. Be sure to keep the keys in a safe place.

Now refer to the enclosed User Manual for instructions on how to add the lock to the TLock smartphone app.

Prefer to watch an installation video?
Check out our YouTube channel

<https://bit.ly/smart-lock-channel>

