

Milwaukee Quick Release Vise Installation Instructions – 7” & 10”



Although there are several ways to install your Milwaukee Quick Release Vise on your workbench, this manual provides a simple and effective method to secure your new vise to the bench for the proper clamping of materials.

This method shows the use of a wood spacer block which would allow for the proper height of the vise jaws to be achieved in relation to the workbench surface. The spacer block would then be glued and screwed to the underside of the workbench top typically with 4 - #14 x 1-1/2” pan head wood screws. It is also helpful to pre-drill the lag screw holes in the spacer block as well.

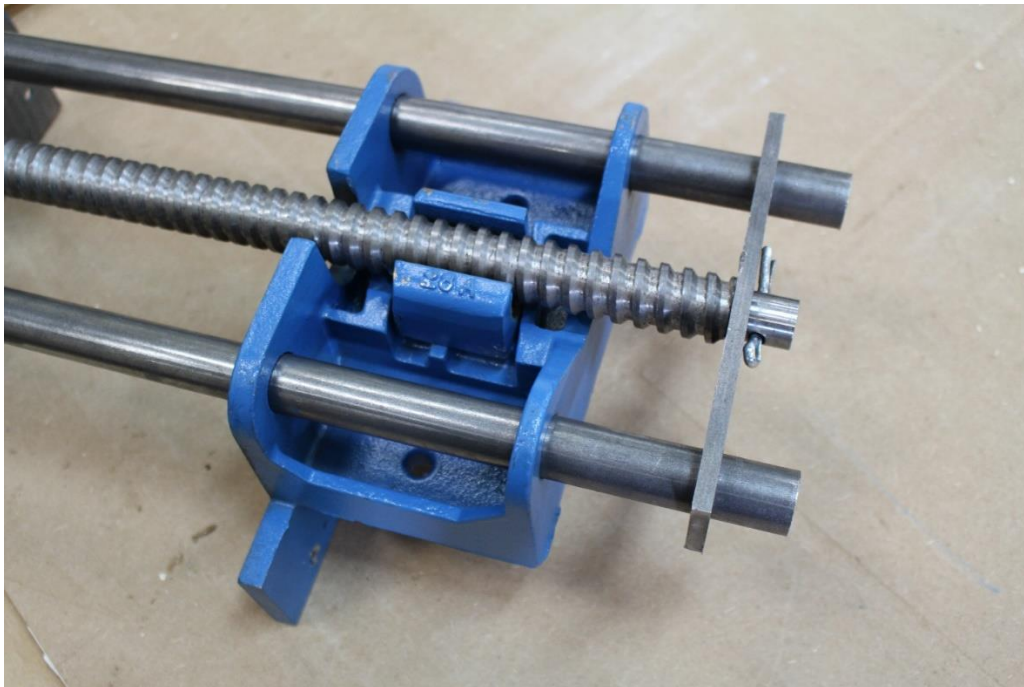
This method also shows the installation of wood jaw liners to the metal vise jaws which would be secured to each jaw with 2 - 1/4-20 x 3/4” machine screws and 4 - #10 x 5/8” wood screws as appropriate for the front and back jaw.

The vise unit is also attached to the workbench by using 2 – 3/8” diameter x 2-1/2” lag bolts & washers (longer if needed) through the back jaw casting to the underside of the workbench top. In addition, two flat head wood screws - #12 x 1-1/2” would also be inserted through the rear jaw of the vise and into the edge of the workbench top. As there is a good amount of force due the weight and usage of the vise, it is very important to secure both the bottom and side of the vise jaw into the benchtop as described.

The cotter pin that holds the vise unit into position can be bent and then re-bent back into position using a pair of needle nose pliers as necessary.



Step 1: Unpack vise and lay on flat surface.



Step 2: Position the vise upside down so that you can easily access the cotter pin.



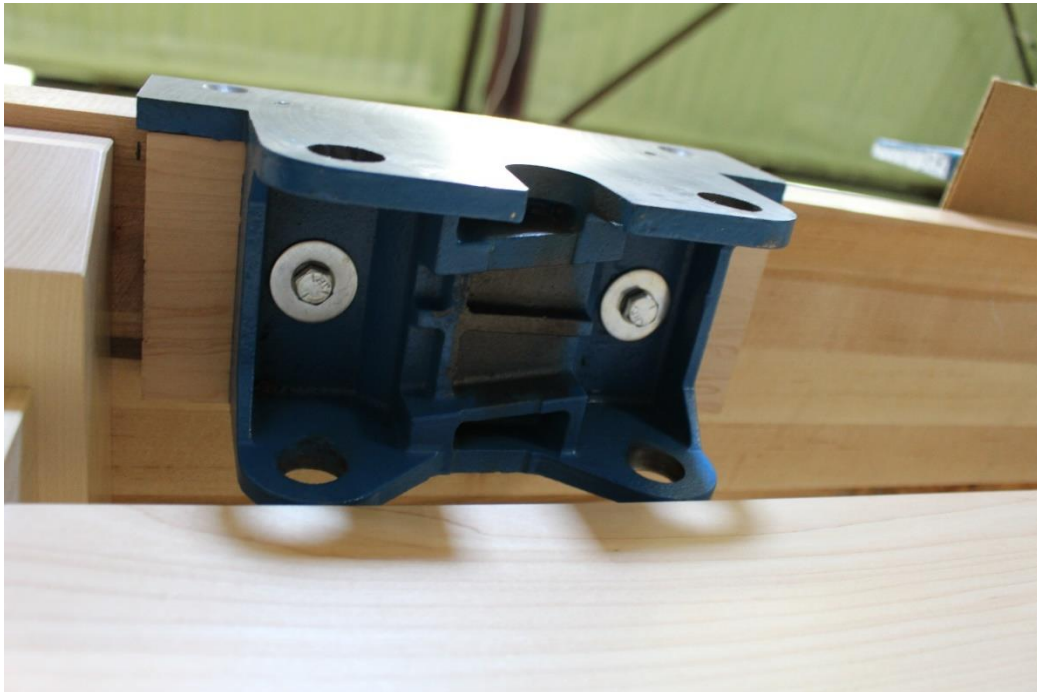
Step 3: Bend and remove the cotter pin and pull the vise base off the runners.



Step 4: Remove the quick release nut from the vise and denote the "front" position marking on the nut.



Step 5: Construct a properly sized spacer block and pre-drill lag bolt holes for vise base unit.



Step 6: Glue & screw spacer block to underside of bench top and then lag bolt vise base unit in place.



Step 7: Screw vise base unit into position on side edge of workbench top.



Step 8: Position quick release vise glide unit on bench top for easy install into vise base unit.



Step 9: Slide quick release vise glide portion into vise base unit and then carefully insert and position the vise quick release nut underneath with the “front” marking toward front of vise and then fully slide in vise unit. The use of two people to accomplish this step would be most helpful and much safer.



Step 10: Ensure that the side glides and center screw insert all the way through the back of the vise base unit.



Step 11: Insert the vise plate onto both glides and the screw and then position the cotter pin into the back of the vise thread screw.



Step 12: Bend cotter pin to secure the full vise unit assembly.



Step 13: Slide the vise unit out and then ensure that the vise nut engages properly into the vise.



Step 14: Secure the vise jaw liners into position and attach accordingly with the proper screws. First attach the front jaw liner.



Step 15: Attach and secure the rear jaw liner.



Step 16: Insert and secure the vise handle into place with provided end caps and screws.



Step 17: The vise should now be fully positioned, secured and functional. Test by sliding in and out and securing materials accordingly in the vise. It may also be helpful to spray the vise screw and nut with a dry bike lubricant for bicycle chains to help lubricate the screw for easy operation.