

All-on-6 Dental Implant Procedure Using StellaLife® VEGA® Oral Care Gel

Description

Patients had all-on-6 procedure performed. Three patients had full mouth extractions, alveoplasty and bone augmentation in conjunction with a sinus elevation. The implants placed, multi-units abutments torqued, and flap reapproximated and closed.

Method

All three patients had StellaLife VEGA Oral Care Gel applied immediately post-operatively. Surgical sites were evaluated 50 minutes after initial application and before setting of the temporary prosthesis. [See video clip](#)

Conclusion

Minimal or no swelling, no bleeding and very healthy looking tissue (see the photos). If the gel was not used, one would anticipate significant swelling after the procedure. In summary, advanced healing was observed. [See video clip](#)



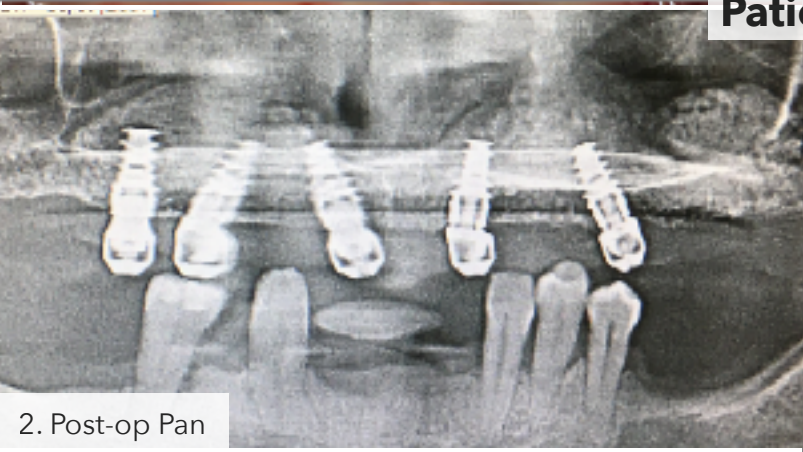
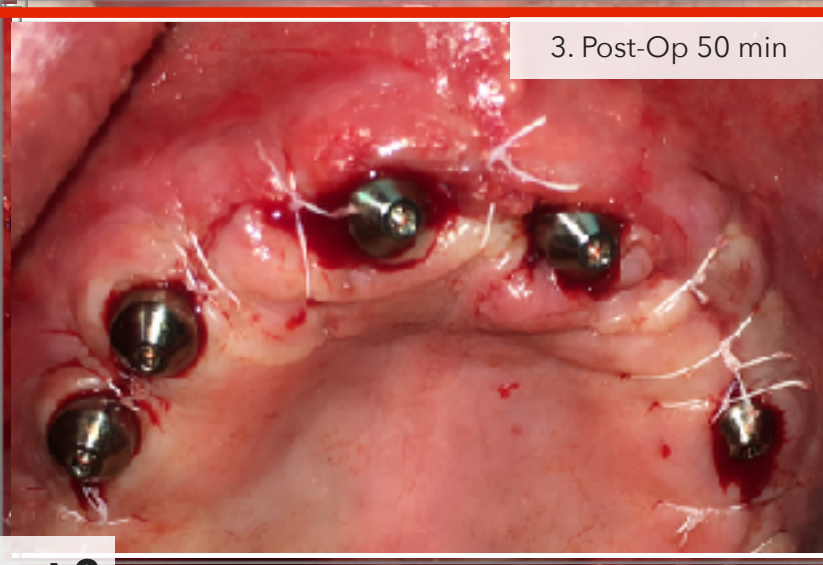
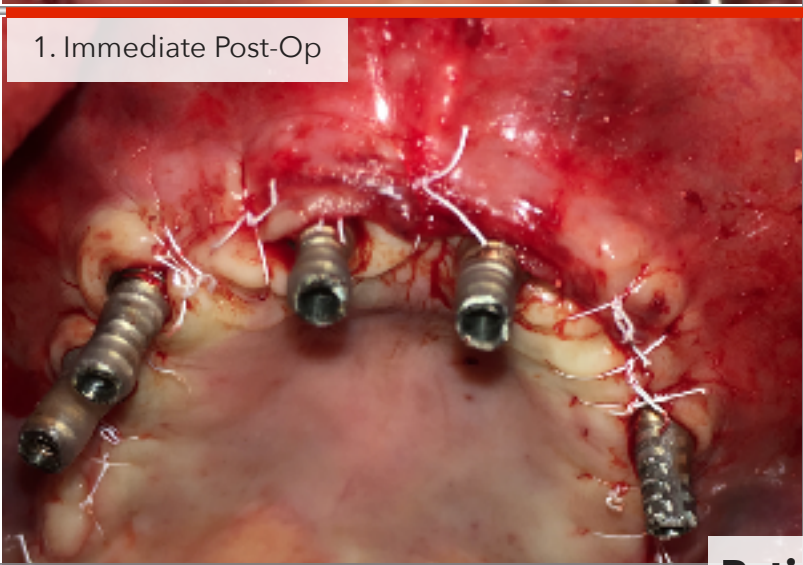
Post-op



Post-op 40 min



Patient 2



Patient 3