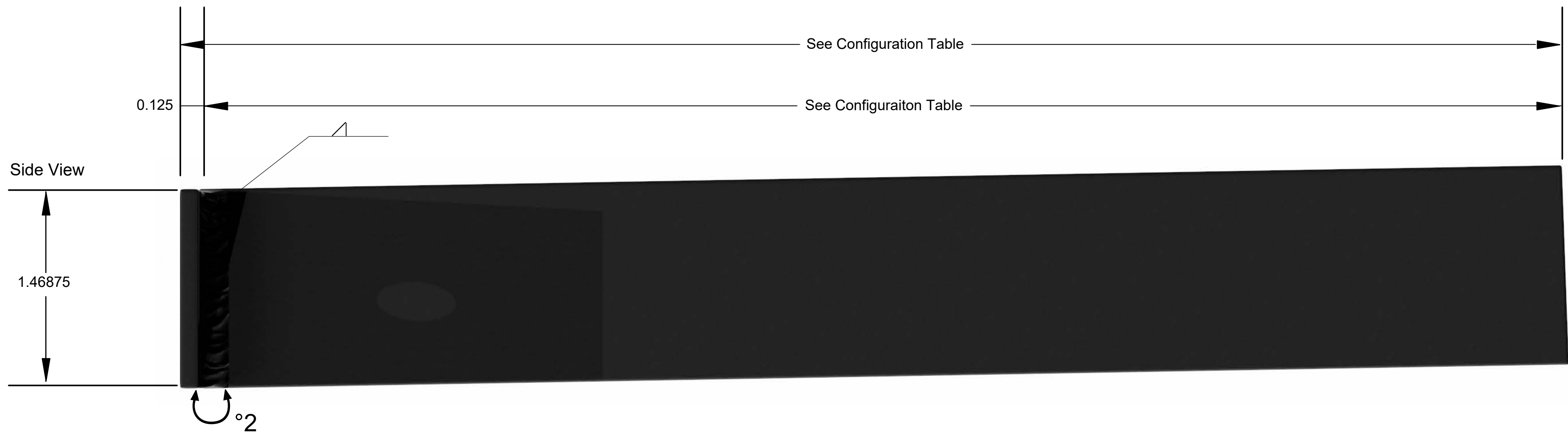
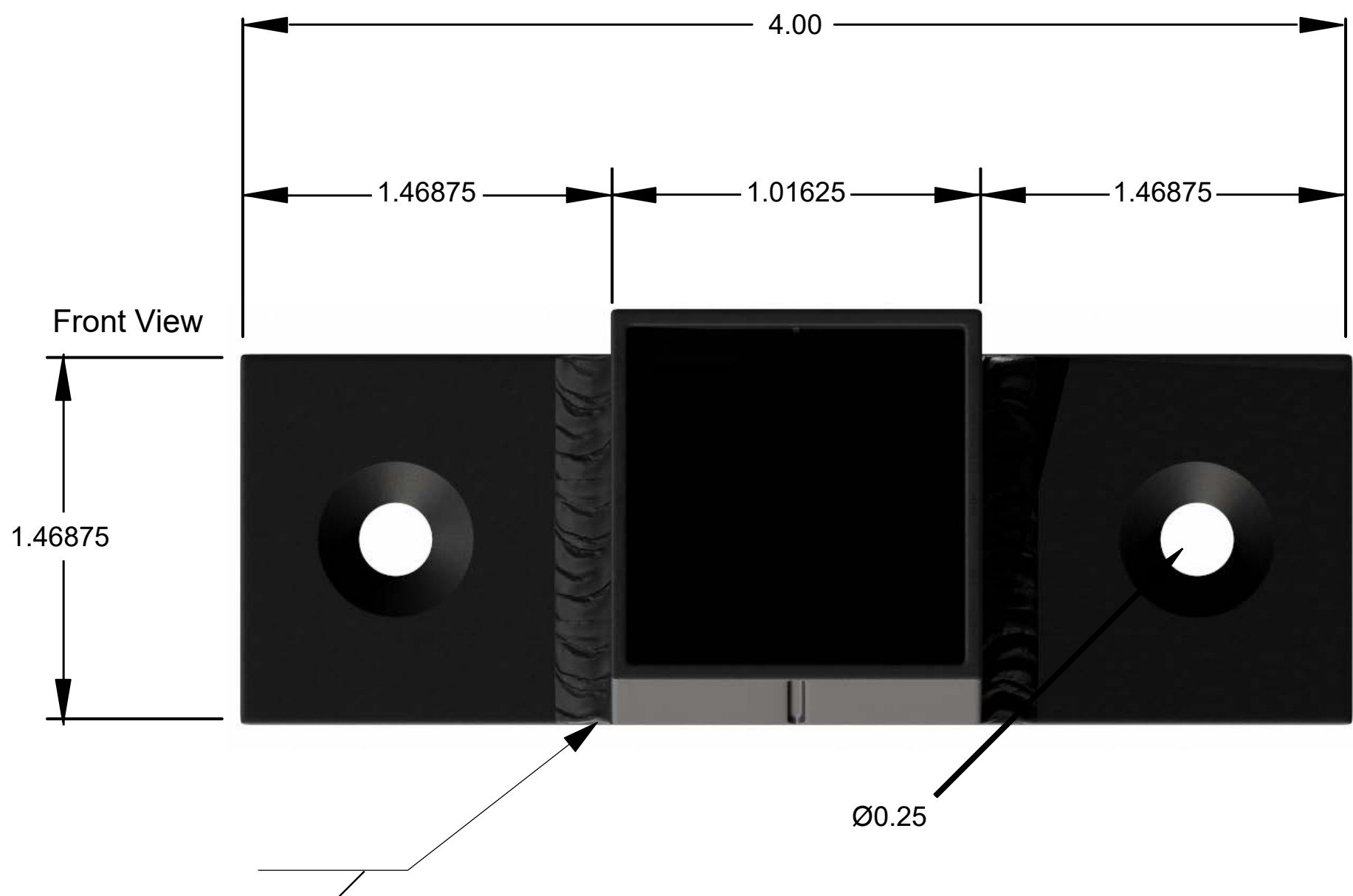


- NOTES: UNLESS OTHERWISE SPECIFIED
1. ALL DIMENSIONS ARE THEORETICALLY SHARP.
  2. REMOVE BURRS AND BREAK ALL SHARP EDGES .03 MAX.
  3. ALL DIMENSIONS ARE IN INCHES UNLESS OTHERWISE STATED.
  4. PARTS SHALL BE FREE OF GREASE AND CUTTING FLUID.
  5. COATED WITH A BLACK RUST INHIBITOR FINISH.


\*There is a 2 degree tilt on all pegs from base of bracket

REVISION STATUS - EACH SHEET IS MARKED WITH ITS REVISION				
ZONE	REV.	DESCRIPTION	DATE	APPROVED
	A	INITIAL RELEASE	09/17/20	

Model	Length
FF-W-5	5"
FF-W-9	9"
FF-W-15	15"



**APPROVED**

UNLESS OTHERWISE SPECIFIED DIMENSIONS ARE IN INCHES		ENGINEER			
TOLERANCES ARE:		ENGINEER			
ANGLES		ENGINEER			
.XX = .01    XX° = 1°		CHECKED			
.XXX = .005		DRAWN	SMR	09/17/20	TITLE
INTERPRET DRAWINGS IN ACCORDANCE WITH:		MANAGER APPROVAL			<b>Wood Shelf Square Brackets, Free Floating</b>
ASME Y14.100 ENGINEERING DRAWING PRACTICES		THE INFORMATION ON THIS DRAWING IS PROPRIETARY AND SHALL NOT BE DISCLOSED, USED OR DUPLICATED FOR PROCUREMENT OR MANUFACTURING PURPOSES WITHOUT THE EXPRESS WRITTEN CONSENT OF THE ORIGINAL GRANITE BRACKET.			SIZE
ASME Y14.38 ABBREVIATIONS					CAGE CODE
ASME Y14.5 DIMENSIONING AND TOLERANCING					DWG NO
ASME Y14.6 SCREW THREAD REPRESENTATION					REV
AWS A2.4 WELDING SYMBOLS					FF-W-xx
IEEE STD 315 SYMBOLS FOR ELECTRICAL AND ELECTRONIC DIAGRAMS					SCALE
					SHEET 1 of 1