

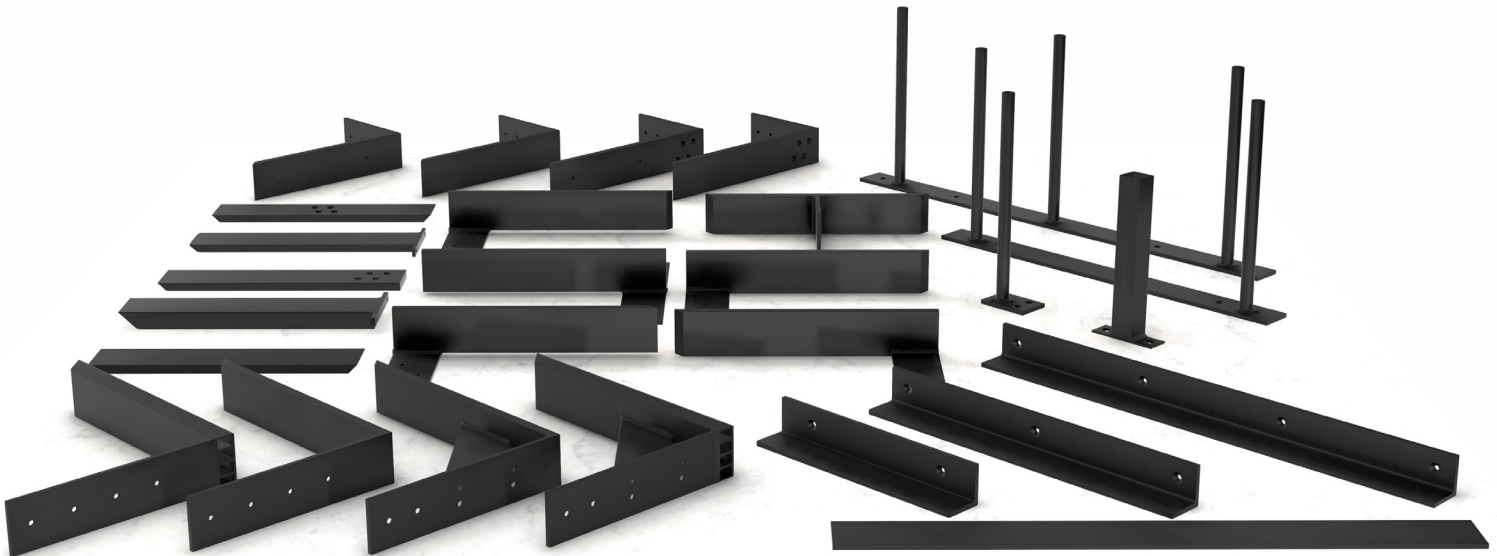


Countertop Support Brackets Catalog

**THE ORIGINAL
GRANITE BRACKET®**



**For All Your
Countertop Support Bracket Needs**



Shop our Hidden Countertop Support Brackets for Granite, Marble, Quartz, Silestone, Corian, Zodiaq, Recycled Glass, Concrete, and Butcher Block Countertops.

FREE SHIPPING

888-584-1112 | sales@originalgranitebracket.com | originalgranitebracket.com

NO-HASSLE RETURNS GUARANTEED

Table of Contents

03. About Us

04. Knee Wall Countertop Support Bracket

05. L Bracket Countertop Support Bracket

06. Island Support Bracket

07. Free Hanging Shelf Bracket

08. Regular Shelf Bracket

09. Flat Wall Shelf Bracket

10. T Brace Countertop Support Bracket

11. Double Sided Island Support Bracket

12. Industrial Island Support Bracket

13. Large Shelf Bracket

14. Free Floating Shelf Bracket

15-16. Wooden Countertop Support Bracket

17. Wall Cleat Support Bracket

18. Dishwasher Strip Support Bracket

19. Industrial Large Shelf Bracket

20. Side Wall Hidden Countertop Support Bracket

21. Custom Support Bracket

About Us

The Original Granite Bracket® began when it became apparent that the industry regarding stone countertop installation was lacking an affordable and strong way to get hidden countertops support brackets. At the time, we had owned a kitchen design center, as well as, a granite fabrication and installation business for years; therefore, we understood this need.

This humble company is proud to say our hidden countertop support brackets are made here in the USA from American steel and American aluminum. Our client base has increased daily due to happy customers and their referrals. As a result of this increase in business, we have expanded our sales operations internationally. So whether you are across the Atlantic or just a few states over, we've got you covered, right here from our facility in Northeast Florida.

Our Brackets have been trusted by Disneyland, American Express, Morgan Stanley, University of Louisville, Jostens®, Johnson & Johnson, Big Green Egg®, Boeing, Grainger, CVS Pharmacy, Showtime Networks, Inc, Whirlpool Corporation, IKEA, plus many fine fabricators, installers, designers, contractors, kitchen design stores, and homeowners.



Top rated and an industry standard, we stand behind our brackets with a Limited Lifetime Warranty.

Entrepreneur 360 Award Winner



We believe we can make a positive impact in our communities. We do this by supporting charities such as...



Knee Wall Countertop Support Bracket

Description:

Our Knee Wall Hidden countertop support is used over a knee or pony wall. This support bracket is the most popular bracket on the market. This is the perfect concealed countertop bracket for all countertop materials.



Bracket Features:

- Virtually invisible; gives your countertop the appearance of floating.
- Strong countertop support. Protects your countertop from tipping or breaking
- Non-intrusive. no corbels needed. No knee knocking.
- Open space for chairs and legs.
- Economical way to protect your countertop investment.
- Easy to install.
- Made of ½ inch thick by 2 ½ inch wide American Steel or Aluminum.
- Horizontal end has a beveled edge for added safety.
- Countersunk holes on horizontal piece.
- Textured with a black rust inhibitor finish.
- Free Ground Shipping
- Made in the USA
- Brackets can be customized before ordering.
- Package is (1) bracket including hardware.

Configuration Table			
Steel		Aluminum	
Model	Length	Model	Length
KW-07	7"	KW-07-A	7"
KW-08	8"	KW-08-A	8"
KW-09	9"	KW-09-A	9"
KW-10	10"	KW-10-A	10"
KW-11	11"	KW-11-A	11"
KW-12	12"	KW-12-A	12"
KW-13	13"	KW-13-A	13"
KW-14	14"	KW-14-A	14"
KW-15	15"	KW-15-A	15"
KW-16	16"	KW-16-A	16"
KW-18	18"	KW-18-A	18"
KW-20	20"	KW-20-A	20"
KW-22	22"	KW-22-A	22"
KW-24	24"		
KW-26	26"		



L Bracket Countertop Support Bracket

Description:

Our L-Bracket is to be used only for countertop applications over a knee or pony wall, or over the back cabinet reinforced with a 2x6. This support bracket gives virtually invisible support to all types of countertops.



Bracket Features:

- Virtually invisible; gives your countertop the appearance of floating.
- Strong countertop support. Protects your countertop from tipping or breaking
- Non-intrusive. no corbels needed. No knee knocking.
- Open space for chairs and legs.
- Economical way to protect your countertop investment.
- Easy to install.
- Made of ½ inch thick by 2 ½ inch wide American Steel or Aluminum.
- Horizontal end has a beveled edge for added safety.
- Countersunk holes on horizontal piece, holes not countersunk on vertical piece.
- Textured with a black rust inhibitor finish.
- Free Ground Shipping
- Made in the USA
- Brackets can be customized before ordering.
- Package is (1) bracket including hardware.

Configuration Table			
Steel		Aluminum	
Model	Length	Model	Length
LB-07	7"	LB-07-A	7"
LB-08	8"	LB-08-A	8"
LB-09	9"	LB-09-A	9"
LB-10	10"	LB-10-A	10"
LB-11	11"	LB-11-A	11"
LB-12	12"	LB-12-A	12"
LB-13	13"	LB-13-A	13"
LB-14	14"	LB-14-A	14"
LB-15	15"	LB-15-A	15"
LB-16	16"	LB-16-A	16"
LB-18	18"	LB-18-A	18"
LB-20	20"	LB-20-A	20"
LB-22	22"	LB-22-A	22"
LB-24	24"		
LB-26	26"		
LB-28	28"		



Hidden Island Support Bracket

Description:

Our Hidden Island Support Bracket is used when there is no knee wall or pony wall. The perfect concealed support for all countertop overhangs, or for a kitchen island or breakfast bar.



Bracket Features:

- Virtually invisible; gives your countertop the appearance of floating.
- Strong countertop support. Protects your countertop from tipping or breaking
- Non-intrusive. no corbels needed. No knee knocking.
- Open space for chairs and legs.
- Economical way to protect your countertop investment.
- Easy to install.
- Made of ½ inch thick by 2 ½ inch wide American Steel.
- Bracket end has a beveled edge for added safety.
- Screw holes on each side of the flange.
- Textured with a black rust inhibitor finish.
- Free Ground Shipping
- Made in the USA
- Brackets can be customized before ordering.
- Package is (1) bracket including hardware.

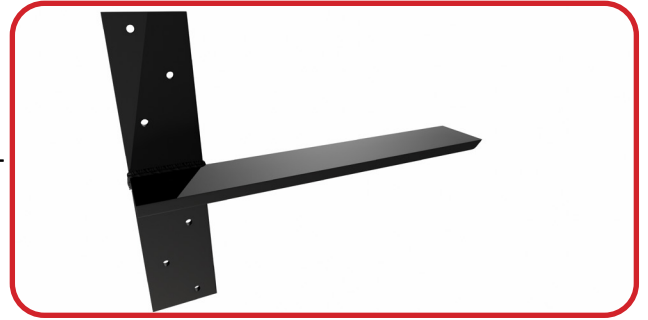
Configuration Table	
Model	Length
IS-14	14"
IS-16	16"
IS-18	18"
IS-20	20"
IS-22	22"
IS-24	24"
IS-26	26"
IS-28	28"
IS-30	30"
IS-32	32"
IS-34	34"
IS-36	36"
IS-38	38"
IS-40	40"
IS-42	42"
IS-44	44"
IS-46	46"
IS-48	48"
IS-50	50"
IS-52	52"
IS-54	54"



Free Hanging Shelf Bracket

Description:

Our Free Hanging Shelf Bracket supports shelves, bathroom vanities, mantels and hearths, desks. This bracket is fastened to wood wall studs. Our Free Hanging Shelf Brackets are universal.



Bracket Features:

- Virtually invisible; gives your countertop the appearance of floating.
- Left, Right, or Universal Angle mounting.
- Strong countertop support. Protects your countertop from tipping or breaking
- Non-intrusive. no corbels needed. No knee knocking.
- Open space for chairs and legs.
- Economical way to protect your countertop investment.
- Easy to install.
- Made of ½ inch thick by 2 ½ inch wide American Steel.
- Bracket end has a beveled edge for added safety.
- Screw holes are staggered on vertical piece
- Textured with a black rust inhibitor finish.
- Free Ground Shipping
- Made in the USA
- Brackets can be customized before ordering.
- Package is (1) bracket including hardware.

Configuration Table	
Model	Length
FH-08-U	8"
FH-10-U	10"
FH-12-U	12"
FH-14-U	14"
FH-16-U	16"
FH-18-U	18"
FH-20-U	20"
FH-22-U	22"
FH-24-U	24"
FH-26-U	26"
FH-28-U	28"
FH-30-U	30"



Regular Shelf Bracket

Description:

Our Regular Shelf Brackets are designed to give your smaller floating shelves an industrial look, while also being strong and durable. The perfect bracket to support those little knick-knacks or home decor.



Bracket Features:

- Virtually invisible; gives your countertop the appearance of floating.
- Non-intrusive. No Corbels needed. No knee knocking.
- Open space for chairs and legs.
- Strong shelving and countertop support. Protects your countertop from tipping or breaking
- Economical way to protect your countertop investment.
- Easy to install.
- Made of ½ inch thick by 2 ½ inch wide American Steel.
- Bracket end has a beveled edge for added safety.
- Screw holes are in-line on vertical piece.
- Textured with a black rust inhibitor finish.
- Free Ground Shipping
- Made in the USA
- Brackets can be customized before ordering.
- Package is (1) bracket including hardware.

Configuration Table		
Model	Length	Height
RS-06x04	6"	4"
RS-08x04	8"	4"
RS-10x06	10"	6"
RS-12x06	12"	6"
RS-14x06	14"	6"
RS-14x10	14"	10"
RS-16x06	16"	6"
RS-16x10	16"	10"



Flat Wall Countertop Support Bracket

Description:

Our Flat Wall Countertop Support Brackets are designed to sit atop and balance in the middle of a knee wall or pony wall. The perfect bracket for serving hatches.



Bracket Features:

- Virtually invisible; gives your countertop the appearance of floating.
- Non-intrusive. No Corbels needed. No knee knocking.
- Open space for chairs and legs.
- Strong shelving and countertop support. Protects your countertop from tipping or breaking
- Economical way to protect your countertop investment.
- Easy to install.
- Made of ½ inch thick by 2 ½ inch wide American Steel.
- Bracket end has a beveled edge for added safety.
- Screw holes are countersunk in the middle of the bracket for a flush installation and added support.
- Textured with a black rust inhibitor finish.
- Free Ground Shipping
- Made in the USA
- Brackets can be customized before ordering.
- Package is (1) bracket including hardware.

Configuration Table	
Model	Length
FW-10	10"
FW-12	12"
FW-14	14"
FW-16	16"
FW-18	18"
FW-20	20"
FW-22	22"
FW-24	24"
FW-26	26"
FW-28	28"
FW-30	30"
FW-32	32"
FW-34	34"
FW-36	36"
FW-38	38"
FW-40	40"
FW-42	42"
FW-44	44"
FW-46	46"
FW-48	48"



T Brace Countertop Support Bracket

Description:

Our T-Brace Bracket protects the overhang on your countertops. The vertical angle drops down on the inside of the cabinet where the horizontal angle lies across the cabinet; one half exposed under the overhang, one half lies inside of the cabinet.



Bracket Features:

- Virtually invisible; gives your countertop the appearance of floating.
- Strong countertop support. Protects your countertop from tipping or breaking
- Non-intrusive. no corbels needed. No knee knocking.
- Open space for chairs and legs.
- Economical way to protect your countertop investment.
- Easy to install.
- Made of ½ inch thick by 2 ½ inch wide American Steel.
- Bracket end has a beveled edge for added safety.
- Screw holes are staggered on vertical piece
- Textured with a black rust inhibitor finish.
- Free Ground Shipping
- Made in the USA
- Brackets can be customized before ordering.
- Package is (1) bracket including hardware.

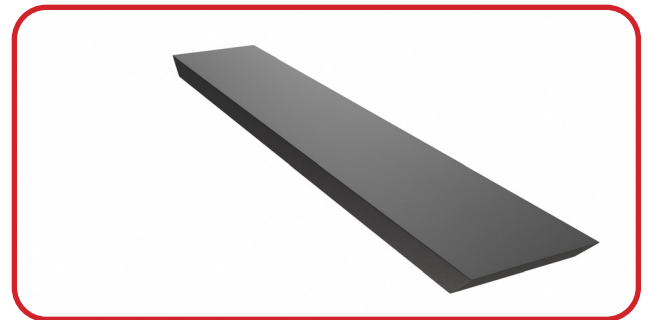
Configuration Table	
Model	Length
TB-12	12"
TB-14	14"
TB-16	16"
TB-18	18"
TB-20	20"
TB-22	22"
TB-24	24"
TB-26	26"
TB-28	28"
TB-30	30"
TB-32	32"
TB-34	34"
TB-36	36"
TB-38	38"
TB-40	40"
TB-42	42"
TB-44	44"
TB-46	46"



Double Sided Island Support Bracket

Description:

Our Double Sided Island Support Bracket is designed for kitchen island countertops, or breakfast bars. This bracket gives support to countertops that have an overhang on each side of the cabinet, as well as staying out of sight.



Bracket Features:

- Virtually invisible; gives your countertop the appearance of floating.
- Non-intrusive. No Corbels needed. No knee knocking.
- Open space for chairs and legs.
- Strong shelving and countertop support. Protects your countertop from tipping or breaking
- Economical way to protect your countertop investment.
- Easy to install.
- Made of ½ inch thick by 2 ½ inch wide American Steel.
- Bracket end has a beveled edge for added safety.
- No screw holes; bracket pops into place.
- Textured with a black rust inhibitor finish.
- Free Ground Shipping
- Made in the USA
- Brackets can be customized before ordering.
- Package is (1) bracket including hardware.

Configuration Table			
Steel		Aluminum	
Model	Length	Model	Length
DSI-24	24"	DSI-24-A	24"
DSI-26	26"	DSI-26-A	26"
DSI-28	28"	DSI-28-A	28"
DSI-30	30"	DSI-30-A	30"
DSI-32	32"	DSI-32-A	32"
DSI-34	34"	DSI-34-A	34"
DSI-36	36"	DSI-36-A	36"
DSI-38	38"	DSI-38-A	38"
DSI-40	40"		
DSI-42	42"		
DSI-44	44"		
DSI-46	46"		
DSI-48	48"		
DSI-50	50"		
DSI-52	52"		
DSI-54	54"		
DSI-56	56"		
DSI-58	58"		
DSI-60	60"		



Industrial Hidden Island Support Bracket

Description:

Our Industrial Hidden Island Support Bracket is used when there is no knee wall or pony wall. Made with reinforced aluminum for those heavy loads. The perfect concealed support for all countertop overhangs, or for a kitchen island or breakfast bar.



Bracket Features:

- Virtually invisible; gives your countertop the appearance of floating.
- Strong countertop support. Protects your countertop from tipping or breaking
- Non-intrusive. no corbels needed. No knee knocking.
- Open space for chairs and legs.
- Economical way to protect your countertop investment.
- Easy to install.
- Made of 1 inch thick by 2 ½ inch wide Reinforced American Aluminum.
- Bracket end has a beveled edge for added safety.
- Screw holes on each side of the flange.
- Textured with a black rust inhibitor finish.
- Free Ground Shipping
- Made in the USA
- Brackets can be customized before ordering.
- Package is (1) bracket including hardware.

Configuration Table	
Model	Length
IIS-28	28"
IIS-30	30"
IIS-32	32"
IIS-34	34"
IIS-36	36"
IIS-38	38"
IIS-40	40"
IIS-42	42"
IIS-44	44"
IIS-46	46"
IIS-48	48"
IIS-50	50"
IIS-52	52"
IIS-54	54"
IIS-56	56"
IIS-58	58"
IIS-60	60"



Large Shelf Bracket

Description:

Our Large Shelf Bracket supports shelves, bar-tops, or even floating desks. This bracket is reinforced with a gusset plate to handle even the heaviest of loads.



Bracket Features:

- Strong shelving and countertop support. Protects your countertop from tipping or breaking
- Economical way to protect your countertop investment.
- Easy to install.
- Made of ½ inch thick by 2 ½ inch wide American Steel or Aluminum.
- Bracket end has a beveled edge for added safety.
- Screw holes on vertical piece.
- Textured with a black rust inhibitor finish.
- Free Ground Shipping
- Made in the USA
- Brackets can be customized before ordering.
- Package is (1) bracket including hardware.



Configuration Table					
Steel			Aluminum		
Model	Length	Height	Model	Length	Height
LS-10x10	10"	10"	LS-10x10-A	10"	10"
LS-12x10	12"	10"	LS-12x10-A	12"	10"
LS-14x10	14"	10"	LS-14x10-A	14"	10"
LS-16x10	16"	10"	LS-16x10-A	16"	10"
LS-18x10	18"	10"	LS-18x10-A	18"	10"
LS-20x10	20"	10"	LS-20x10-A	20"	10"
LS-22x10	22"	10"	LS-22x10-A	22"	10"
LS-24x12	24"	12"			
LS-26x12	26"	12"			



Free Floating Shelf Round Bracket

Description:

Our Free Floating Shelf Round Brackets are designed for standard shelving or mantelpieces. This bracket uses pegs to secure your shelving. Currently, the Free Floating Shelf Bracket comes in three configurations; single peg, double peg, or triple peg.

Bracket Features:

- Virtually invisible; gives your countertop the appearance of floating.
- Non-intrusive. No Corbels needed. No knee knocking.
- Open space for chairs and legs.
- Strong shelving and mantelpiece support.
- Economical way to protect your countertop investment.
- Easy to install.
- Made of American Steel.
- Bracket end has a beveled edge for added safety.
- Screw holes have been countersunk for a flush installation.
- Textured with a black rust inhibitor finish.
- Free Ground Shipping
- Made in the USA
- Brackets can be customized before ordering.
- Package is (1) bracket including hardware.



Configuration Table

Model	Length	Pegs
FF-06x01	6"	1.0
FF-09x01	9"	1.0
FF-06x02	6"	2.0
FF-09x02	9"	2.0
FF-06x03	6"	3.0
FF-09x03	9"	3.0



Wooden Countertop Support Brackets

We also offer many of our support brackets modified to accommodate wooden countertops specifically. These brackets have added screw holes, so that you can secure your wooden countertops to the bracket with wood screws. The brackets available for this modification are listed below.

Knee Wall Wood Countertop Support Bracket with 2 mounting holes

Configuration Table		Configuration Table		Configuration Table		Configuration Table	
Steel		Steel		Aluminum		Aluminum	
Model	Length	Model	Length	Model	Length	Model	Length
KW-07-W	7"	KW-18-W	18"	KW-07-W-A	7"	KW-18-W-A	18"
KW-08-W	8"	KW-20-W	20"	KW-08-W-A	8"	KW-20-W-A	20"
KW-09-W	9"	KW-22-W	22"	KW-09-W-A	9"	KW-22-W-A	22"
KW-10-W	10"	KW-24-W	24"	KW-10-W-A	10"	KW-24-W-A	24"
KW-11-W	11"	KW-26-W	26"	KW-11-W-A	11"	KW-26-W-A	26"
KW-12-W	12"			KW-12-W-A	12"		
KW-13-W	13"			KW-13-W-A	13"		
KW-14-W	14"			KW-14-W-A	14"		
KW-15-W	15"			KW-15-W-A	15"		
KW-16-W	16"			KW-16-W-A	16"		

*See page (04) for full description



L Bracket Wood Countertop Support Bracket with 2 mounting holes

Configuration Table		Configuration Table		Configuration Table		Configuration Table	
Model	Length	Model	Length	Model	Length	Model	Length
LB-07-W	7"	LB-11-W	11"	LB-15-W	15"	LB-20-W	20"
LB-08-W	8"	LB-12-W	12"	LB-16-W	16"	LB-22-W	22"
LB-09-W	9"	LB-13-W	13"	LB-18-W	18"		
LB-10-W	10"	LB-14-W	14"				

*See page (05) for full description



Free Hanging Wood Shelf Bracket with 2 mounting holes

Configuration Table		Configuration Table		Configuration Table	
Model	Length	Model	Length	Model	Length
FH-08-U-W	8"	FH-16-U-W	16"	FH-24-U-W	24"
FH-10-U-W	10"	FH-18-U-W	18"	FH-26-U-W	26"
FH-12-U-W	12"	FH-20-U-W	20"	FH-28-U-W	28"
FH-14-U-W	14"	FH-22-U-W	22"	FH-30-U-W	30"

*See page (07) for full description



Shelf Brackets for **Wooden Countertops**

(Continuation)

Large Wood Shelf Bracket with mounting 2 holes

Configuration Table		
Model	Length	Height
LS-10x10-W	10"	10"
LS-12x10-W	12"	10"
LS-14x10-W	14"	10"
LS-16x10-W	16"	10"
LS-18x10-W	18"	10"

Configuration Table		
Model	Length	Height
LS-20x10-W	20"	10"
LS-22x10-W	22"	10"
LS-24x12-W	24"	12"
LS-26x12-W	26"	12"

*See page (13) for full description



Regular Wood Shelf Bracket with 2 Mounting Holes

Configuration Table		
Model	Length	Height
RS-06x04-W	6"	4"
RS-08x04-W	8"	4"
RS-10x06-W	10"	6"
RS-12x06-W	12"	6"
RS-14x06-W	14"	6"

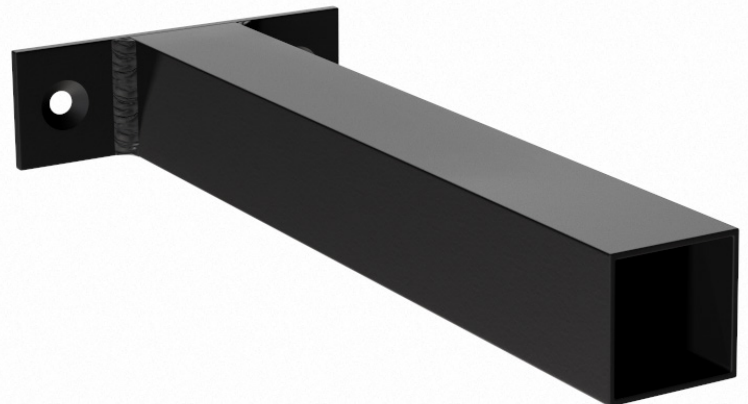
Configuration Table		
Model	Length	Height
RS-14x10-W	14"	10"
RS-16x06-W	16"	6"
RS-16x10-W	16"	10"

*See page (08) for full description



Free Floating Wood Shelf Square Bracket with angled support

Configuration Table		
Model	Length	Pegs
FF-5-W	5"	1.0
FF-9-W	9"	1.0
FF-15-W	15"	1.0



Wall Cleat Support Bracket

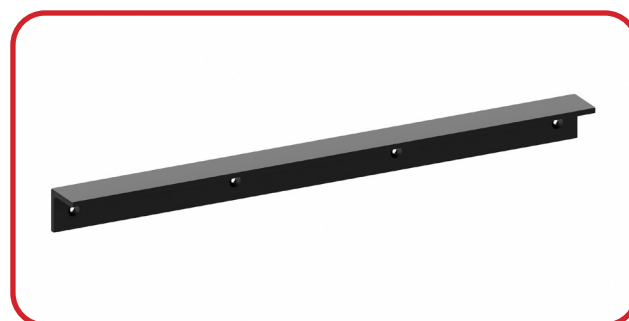
Description:

Our Wall Cleat Support Brackets are designed to bridge and support that gap that a dishwasher or free hanging sink might create under your countertop. Our Wall Cleat offers stability and sturdiness in a compact size.



Bracket Features:

- Virtually invisible; gives your countertop the appearance of floating.
- Non-intrusive. No Corbels needed. No knee knocking.
- Strong shelving and countertop support. Protects your countertop from tipping or breaking
- Economical way to protect your countertop investment.
- Easy to install.
- Made of ¼ inch thick by 2 inch long American Aluminum.
- Bracket end has a beveled edge for added safety.
- Textured with a black rust inhibitor finish.
- Free Ground Shipping
- Made in the USA
- Brackets can be customized before ordering.
- Package is (1) bracket including hardware.



Configuration Table

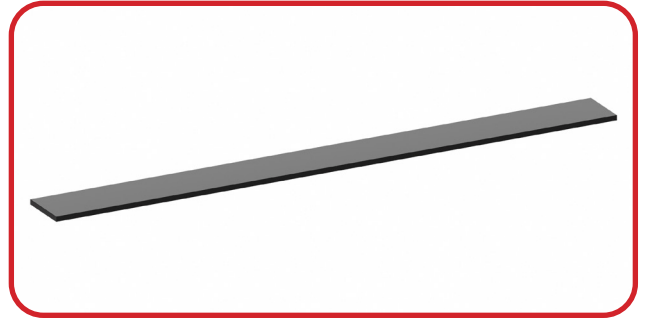
Model	Length
WC-12	12"
WC-18	18"
WC-26	26"



Dishwasher Strip Support Bar

Description:

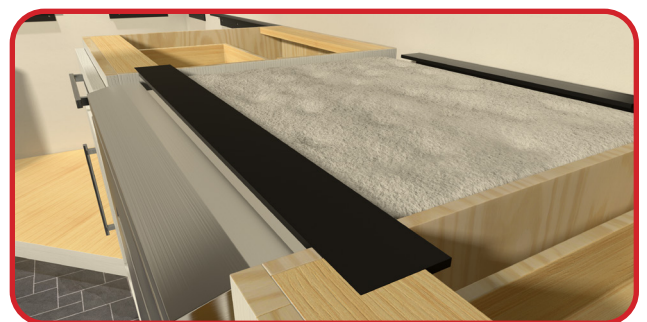
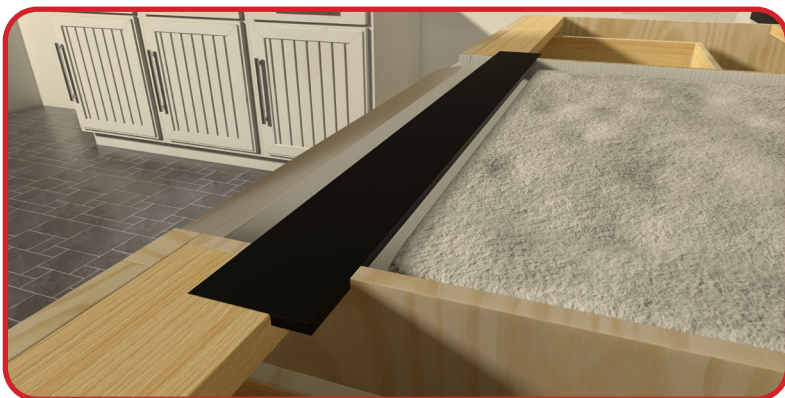
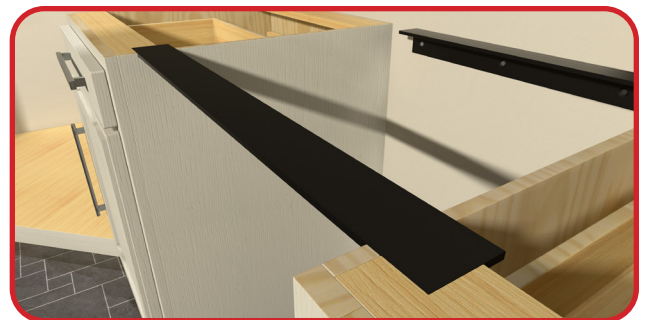
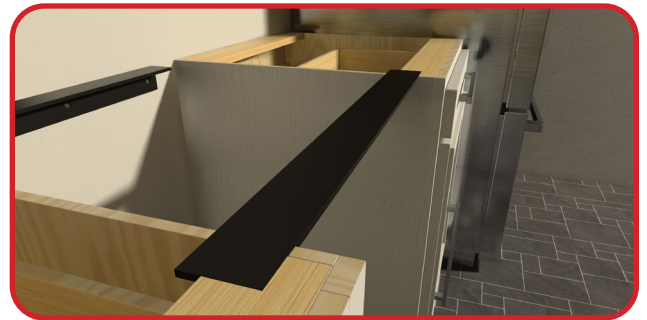
(Aluminum) Our Washer Strip Support Bars are designed to bridge and support the front-end gap between your dishwasher and cabinetry. Cuts will need to be made near the front of your cabinetry for placement of the Washer Strip Support Bar.



Bracket Features:

- Virtually invisible; gives your countertop the appearance of floating.
- Non-intrusive. No Corbels needed. No knee knocking.
- Strong shelving and countertop support. Protects your countertop from tipping or breaking.
- Economical way to protect your countertop investment.
- Easy to install.
- Made of ¼ inch thick by 2½ inch wide American Aluminum.
- Bracket end has a beveled edge for added safety.
- Textured with a black rust inhibitor finish.
- Free Ground Shipping
- Made in the USA
- Brackets can be customized before ordering.
- Package is (1) bracket including hardware.

Configuration Table	
Model	Length
DWS-26	26"



Industrial Large Shelf Bracket

Description:

Our Industrial Large Shelf Bracket supports shelves, bar-tops, or even floating desks. This bracket is made with reinforced American-made aluminum. This bracket is also reinforced with a gusset plate to handle even the heaviest of loads.

Bracket Features:

- Strong shelving and countertop support. Protects your countertop from tipping or breaking
- Economical way to protect your countertop investment.
- Easy to install.
- Made of 1 inch thick by 2 ½ inch wide Reinforced American Aluminum.
- Bracket end has a beveled edge for added safety.
- Screw holes on vertical piece.
- Textured with a black rust inhibitor finish.
- Free Ground Shipping
- Made in the USA
- Brackets can be customized before ordering.
- Package is (1) bracket including hardware.



Configuration Table		
Model	Length	Height
LSI-10x10	10"	10"
LSI-12x10	12"	10"
LSI-14x10	14"	10"
LSI-16x10	16"	10"
LSI-18x10	18"	10"
LSI-20x10	20"	10"
LSI-22x10	22"	10"
LSI-24x12	24"	12"
LSI-26x12	26"	12"
LSI-28x12	28"	12"
LSI-30x12	30"	12"
LSI-32x12	32"	12"



Side Wall Hidden Countertop Support Bracket

Description:

Our Side Wall Hidden Countertop Support Brackets are designed to support countertops which do not have a knee wall or pony wall to mount to. This bracket mounts to the inside of the left or right side cabinet wall.



Bracket Features:

- Virtually invisible; gives your countertop the appearance of floating.
- Non-intrusive. No Corbels needed. No knee knocking.
- Open space for chairs and legs.
- Strong shelving and countertop support. Protects your countertop from tipping or breaking
- Economical way to protect your countertop investment.
- Easy to install.
- Made of ½ inch thick by 2 ½ inch wide American Steel.
- Bracket end has a beveled edge for added safety.
- Screw holes are staggered on the vertical piece.
- Textured with a black rust inhibitor finish.
- Free Ground Shipping
- Made in the USA
- Brackets can be customized before ordering.
- Package is (1) bracket including hardware.



Configuration Table

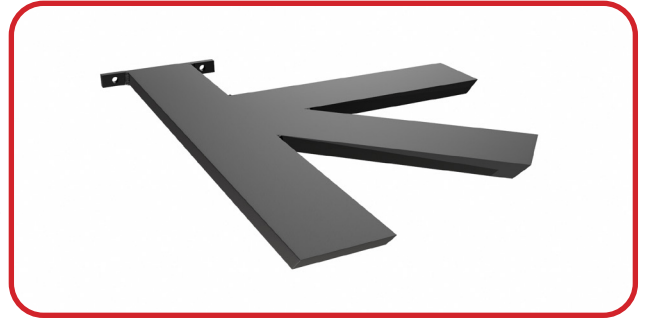
Model	Length
SW-08-L,R	8"
SW-10-L,R	10"
SW-12-L,R	12"
SW-14-L,R	14"
SW-16-L,R	16"
SW-18-L,R	18"
SW-20-L,R	20"
SW-22-L,R	22"
SW-24-L,R	24"
SW-26-L,R	26"



Custom Support Bracket

Description:

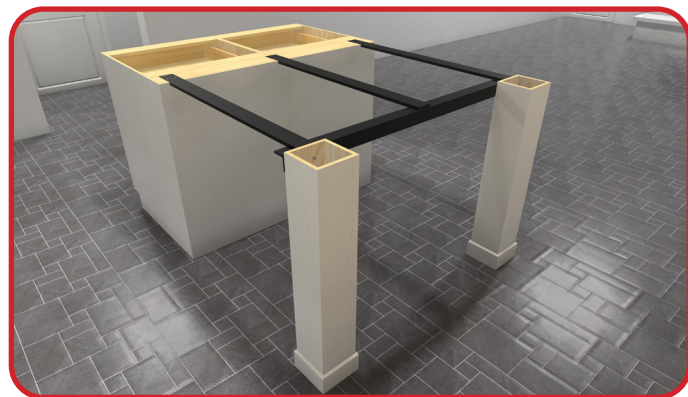
Our Custom Support Brackets are made-to-order for your specific needs. If your project calls for a Custom Support Bracket, please email us your project photos and/or drawings to Sales@originalgranitebracket.com. Please include your name and phone number and one of our team members will reach out to assist you.



Bracket Features:

- **Custom Brackets are non-returnable.**
- Production on projects will not begin until we receive photos/drawings of your project.
- Virtually invisible; gives your countertop the appearance of floating.
- Can be configured for longer, double, or even triple sided overhangs.
- Non-intrusive. No Corbels needed. No knee knocking.
- Open space for chairs and legs.
- Strong shelving and countertop support. Protects your countertop from tipping or breaking
- Economical way to protect your countertop investment.
- Easy to install.
- Made of ½ inch thick by 2 ½ inch wide American Steel.
- Bracket end has a beveled edge for added safety.
- Textured with a black rust inhibitor finish.
- Free Ground Shipping
- Made in the USA
- Brackets can be customized before ordering.
- Package is (1) bracket including hardware.









Configuration Table	
Model	Length
C-32	32"
C-34	34"
C-36	36"
C-38	38"
C-40	40"
C-42	42"





THE ORIGINAL GRANITE BRACKET®

"We were first in the industry to build the strongest hidden granite support braces for countertop support, made of American steel, right here in the USA"

-  888-584-1112
-  sales@originalgranitebracket.com
-  www.originalgranitebracket.com
-  www.facebook.com/theoriginalgranitebracket
-  www.twitter.com/GraniteBracket
-  www.youtube.com/c/TheOriginalGraniteBrackets
-  www.pinterest.com/theoriginalgranitebracket
-  www.instagram.com/theoriginalgranitebracket

