

FA150 Series

KEY FEATURES

- Current rating 1-2A
- Very Compact PCB-mounting Design, Easy to Mount
- To Enhance the Anti-interference Performance and Reduce CE and RE
- It's Suitable for 1W~150W Power Products
- 3-Year Product Warranty

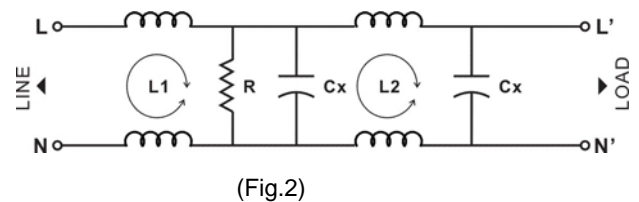
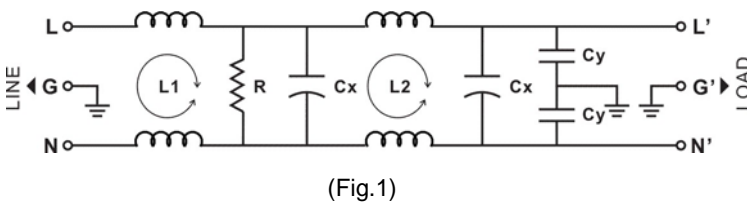


ELECTRICAL SPECIFICATIONS

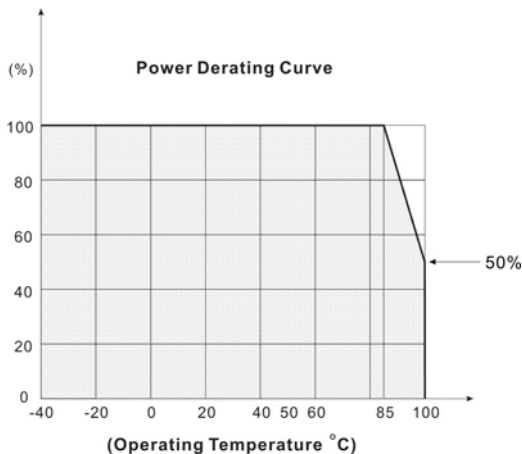
All specifications valid at normal input voltage, full load and +25°C after warm-up time unless otherwise stated.

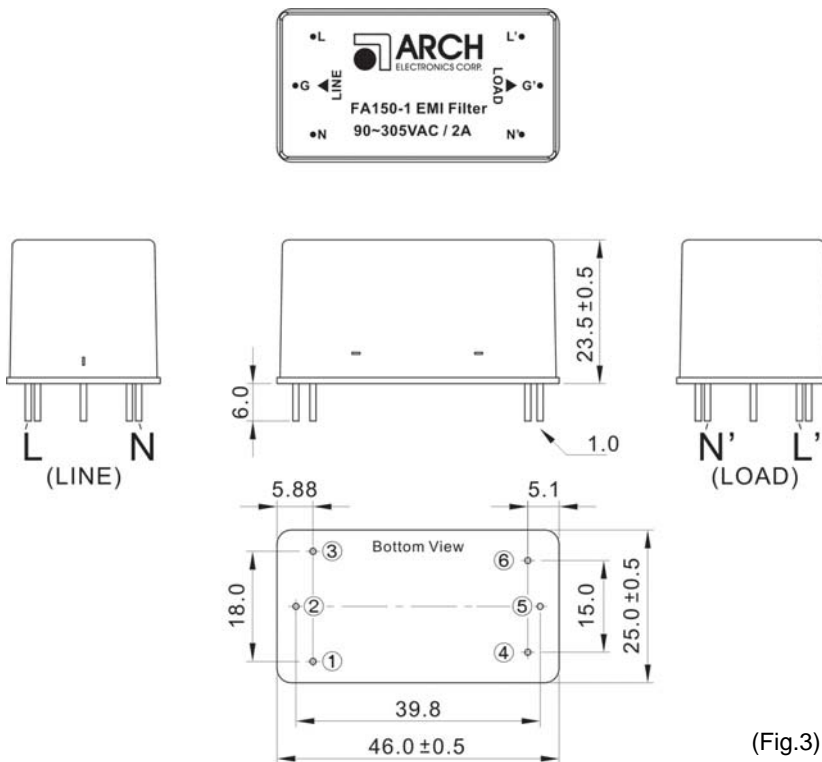
Model No.	FA150-1	FA150-2	FA150-3
Rated Voltage	90-305VAC		
Rated Current	2 A	2 A	1 A
Operating Frequency	47-63Hz		
Hi Pot Rating	Line to Line	1800VDC \leq 5mA (1 min)	
	Line to Ground	2000VAC \leq 5mA (1 min)	
Circuit	Class I (Fig.1)	Class II (Fig.2)	Class II (Fig.2)
Housing	Fig.3		
Operating Temperature	-40°C...+100°C (with derating)		
Storage Temperature	-40°C...+100°C		
Weight	58±5 g		

ELECTRIC CIRCUIT



DERATING



FA150 Series
MECHANICAL DIMENSIONS


(Fig.3)

PIN#	FA150-1	FA150-2	FA150-3
1	L	L	L
2	G	NO PIN	NO PIN
3	N	N	N
4	L'	L'	L'
5	G'	NO PIN	NO PIN
6	N'	N'	N'

We reserve the right to make alterations in the product materials and specifications without prior notification and consent to improve reliability, function or design or otherwise.

<http://www.archcorp.com.tw>

TEL: +886-2-26989508 FAX: +886-2-26981319