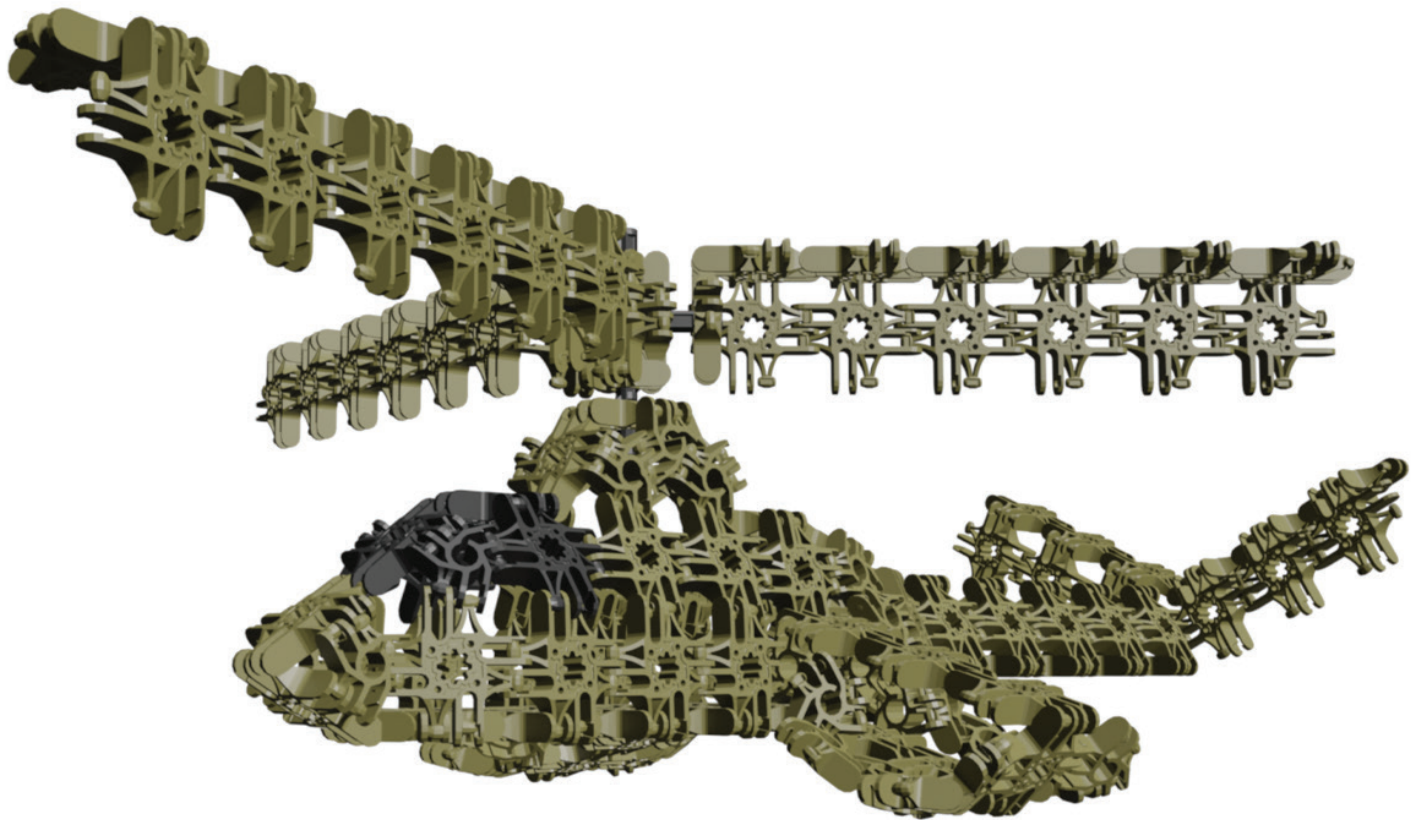


---

LUXFORCE

# RESCUE CHOPPER

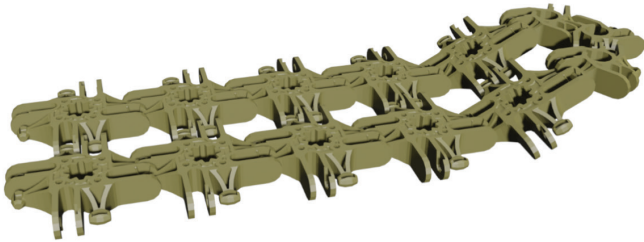
## INSTRUCTIONS



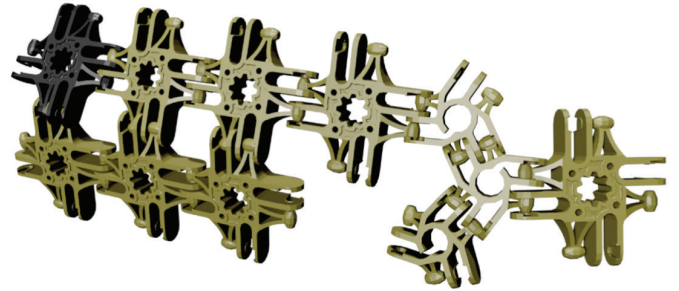
# MAKING THE BASE



**A**



**B\***

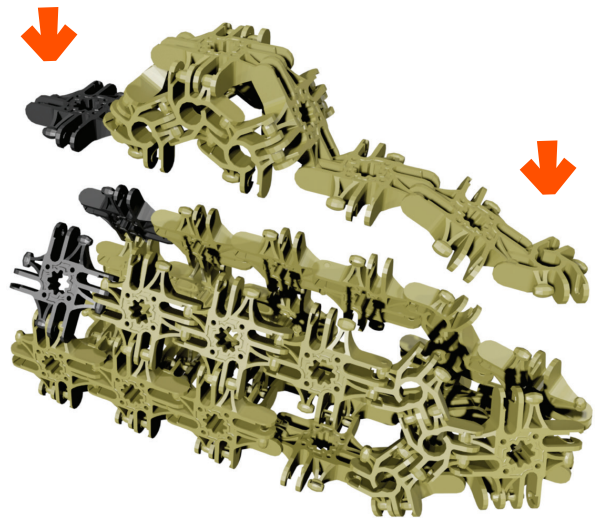


*Make one for  
both left and  
right sides*

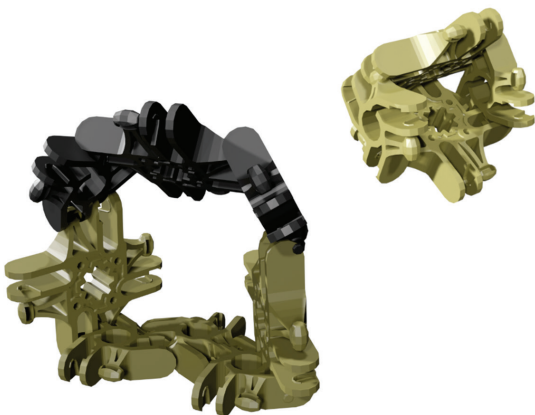
**C**



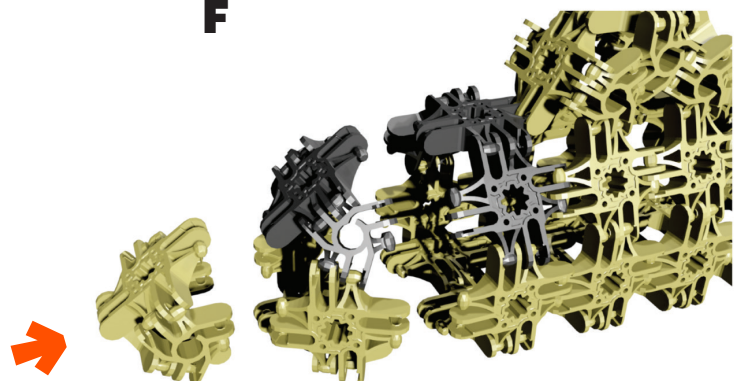
**D**



**E**



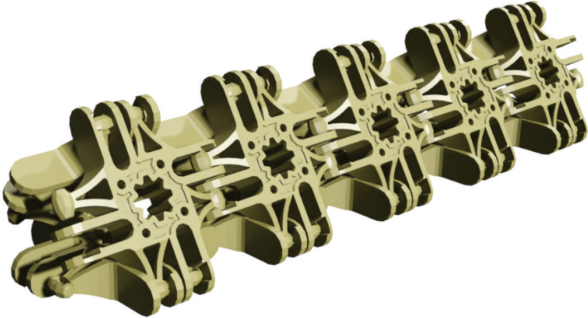
**F**



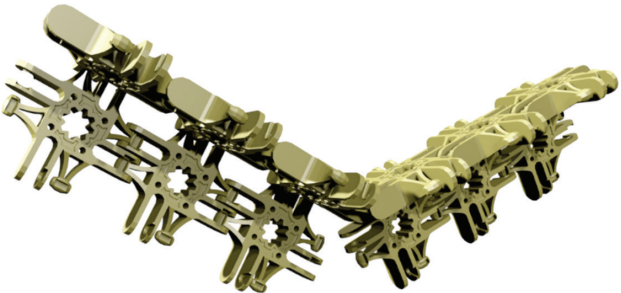
# TAIL & WINGS



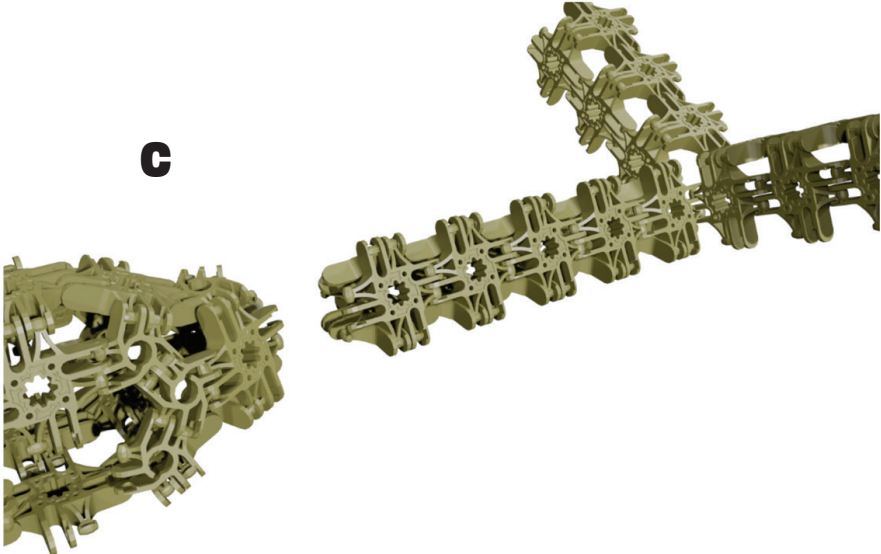
**A**



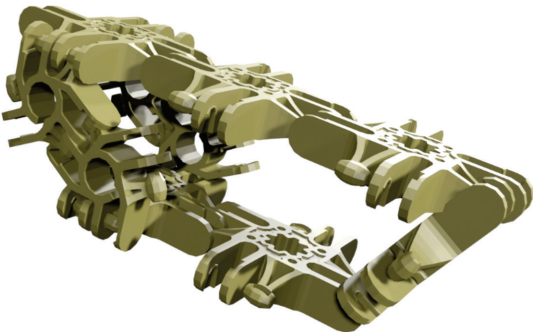
**B**



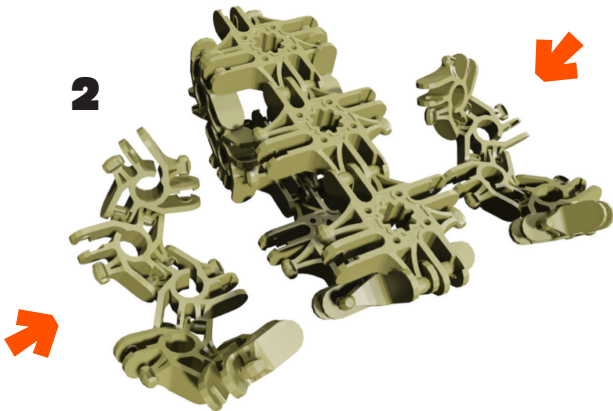
**C**



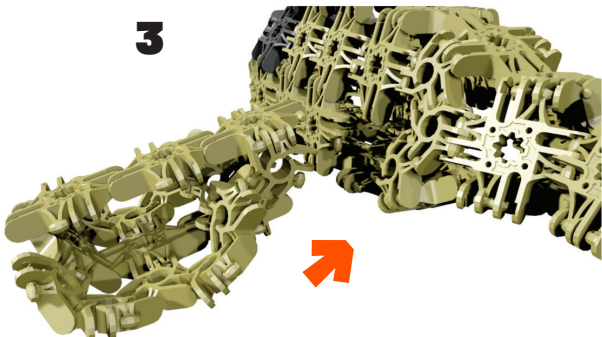
**1**



**2**



**3**



# ROTOR & BLADES



**A**

x3

