



***LUX FORCE***

***WRAITH***

**Snow Camouflage**

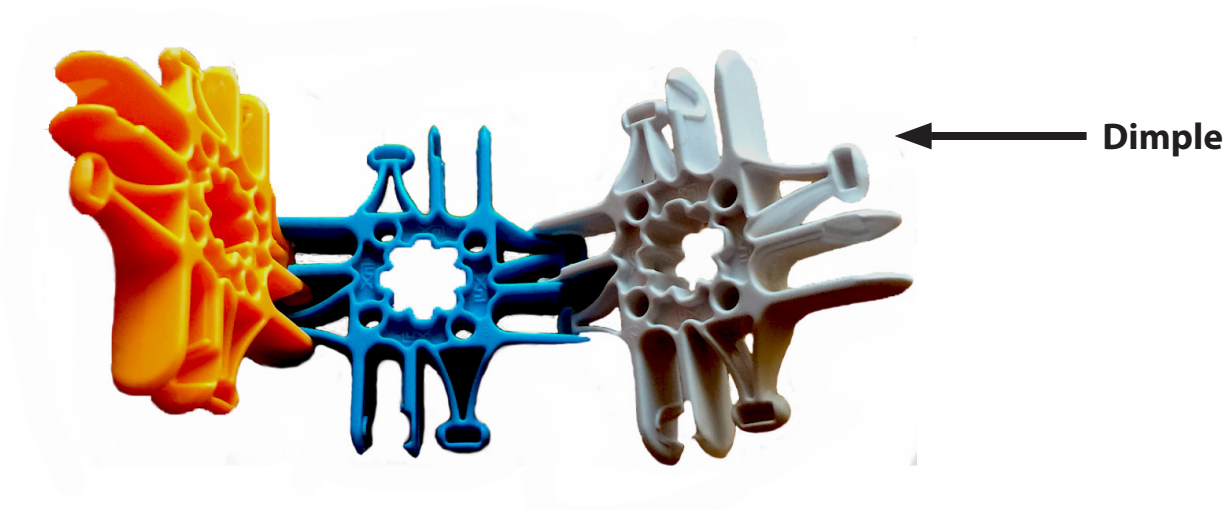


# Getting Started with Lux™

Here are a few of the things you'll want to know about Lux™ before getting started. For more ideas, or if you prefer to watch a “how-to” video, please visit our website at [www.luxblox.com](http://www.luxblox.com).

## Dimples

The dimples are the rectangle-shaped cavities on the egg-shaped connector. One thing to keep in mind when building with Lux™ is to be consistent with the direction your dimples are facing. Make sure all the dimples are facing the same direction - either all ‘in’ or all ‘out’, so they will all connect to each other. Otherwise, you may need to go back and remake parts.



## The Egg Goes in the Nest

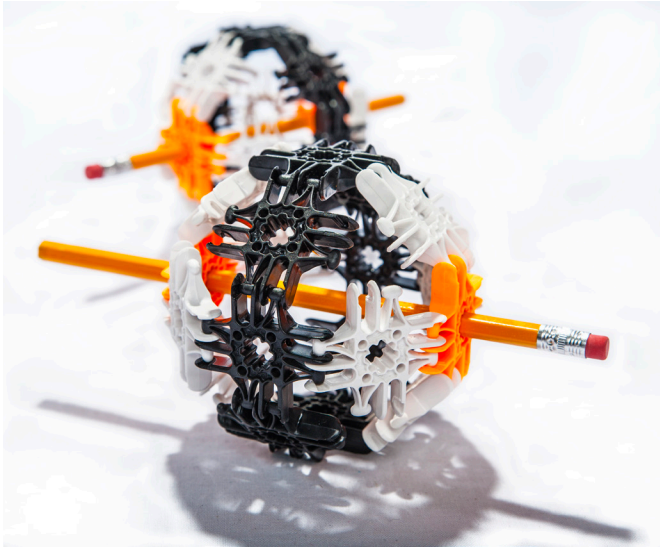
When connecting Lux™, simply push the connectors together so each egg-shaped part goes into each U-shaped “nest” and the Lux™ will snap into place. Once it snaps, it becomes a strong hinge with 240 degrees of rotation.



Go to [www.luxblox.com](http://www.luxblox.com) to learn more and see what others are building with Lux™!

# Unsticking Your Cube

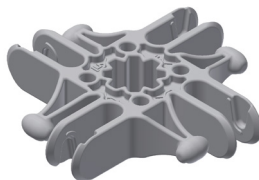
If you make a Lux™ cube, you will discover that it is not easy to take it apart. It is very easy to solve this by just inserting a pencil or dowel rod into the hole of a Lux™ and prying open your cube.



## Parts List for Wraith: Snow Camouflage



#2 Axle  
Qty: 3



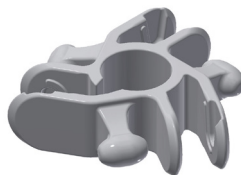
Grey Square  
Qty: 48



Black  
Square  
Qty: 1



#5 Axle  
Qty: 3



White  
Trigon  
Qty: 37



Black  
Trigon  
Qty: 6



Square  
Wheel  
Qty: 3



Square Wheel  
Rubber Bands  
Qty: 3

# ***LUX FORCE*** ***WRAITH***



On Mars, the Marines of the 7th ANGLICO (Marines trained for space combat) were nicknamed the “Lux Force” by the colonist’s children when the children helped the Marines to make weapons, battlements, and vehicles in the war against the Phage using Lux Blox. The name stuck and as the war raged on, the ranks of the Lux Force swelled as more colonists joined to fight the Phage.

Like most Lux Force vehicles, Wraiths are constructed out of Lux Blox made on Mars from CTG (Covetic Titanium Graphene). CTG is an incredibly strong and virtually indestructible super-material, capable of stopping laser and projectile fire, and it has the ability to bend, making it ideal for Lux Blox construction techniques.

During Martian combat operations against the Phage, Wraiths were mostly used as strike and reconnaissance vehicles because of their speed, ruggedness, stealth, and ability to traverse difficult terrain.

The Wraith is the fastest of the Lux Force ground vehicles, capable of speeds on open terrain of up to 160 miles per hour.

The Wraith’s XM25 Electric Spool Gun is operated by the gunner who sits in the rear of the three passenger bike.

The Wraith is powered by a 250 horsepower electric motor with an M-Jet 4 fueled turbine DC generator and 100 hour battery. It can sustain 3 adults for one week.

You can read more of the Lux Force Adventures at [www.luxblox.com](http://www.luxblox.com).



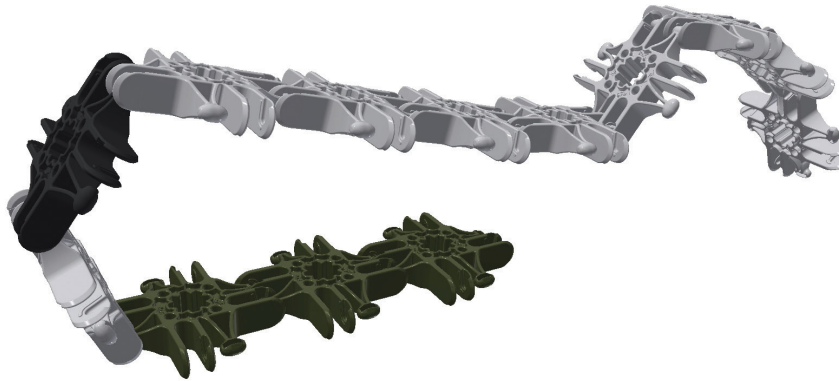
# Step-by-Step Instructions

## Step 1

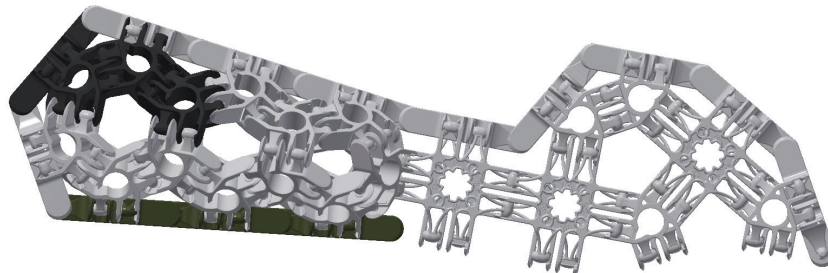


**NOTE: Not actual color. Color darkened to differentiate floor from walls of vehicle.**

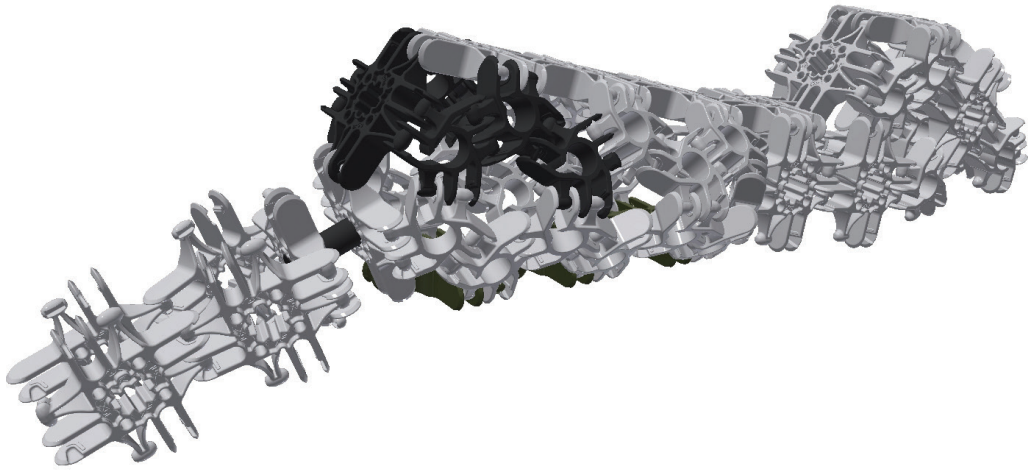
## Step 2



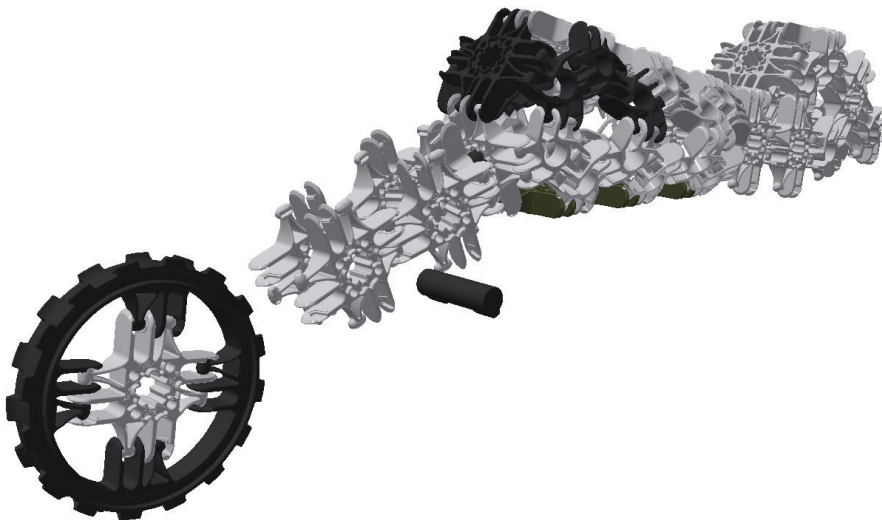
## Step 3



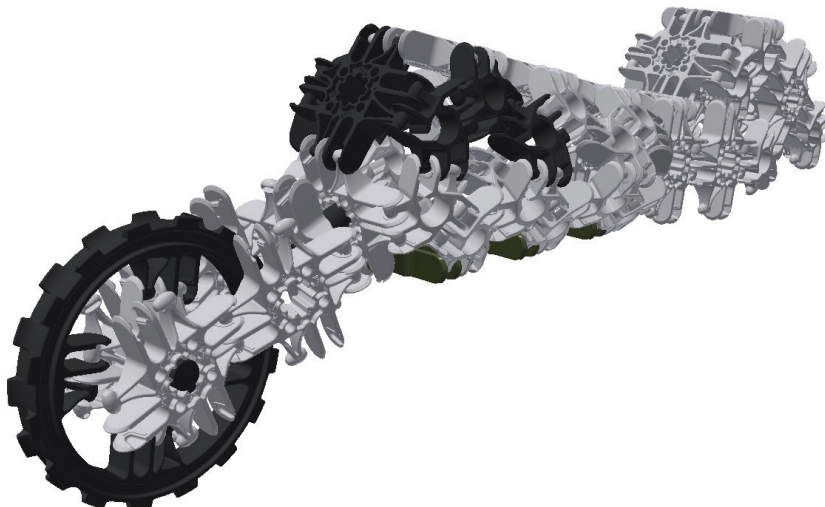
## Step 4



## Step 5



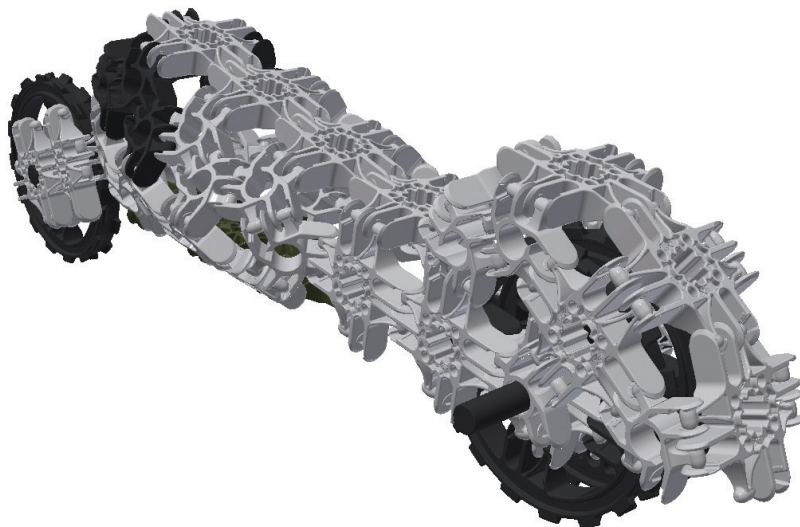
## Step 6



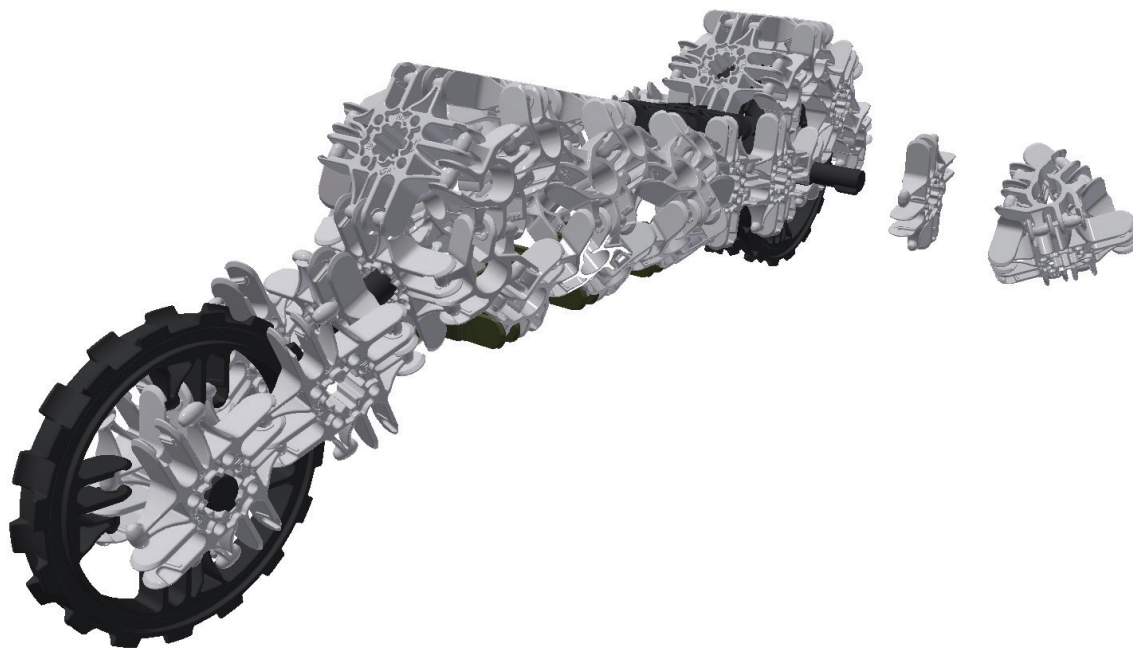
## Step 7



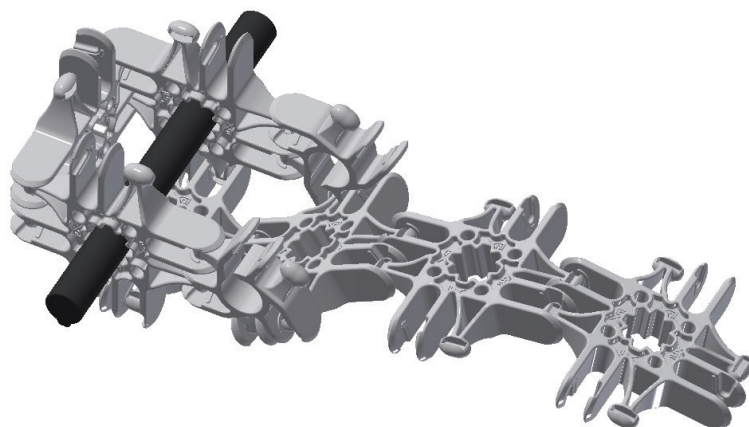
## Step 8



## Step 9

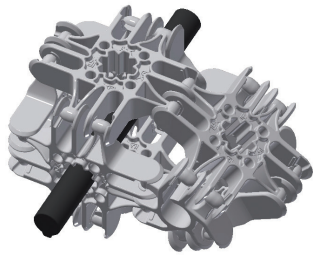


## Step 10

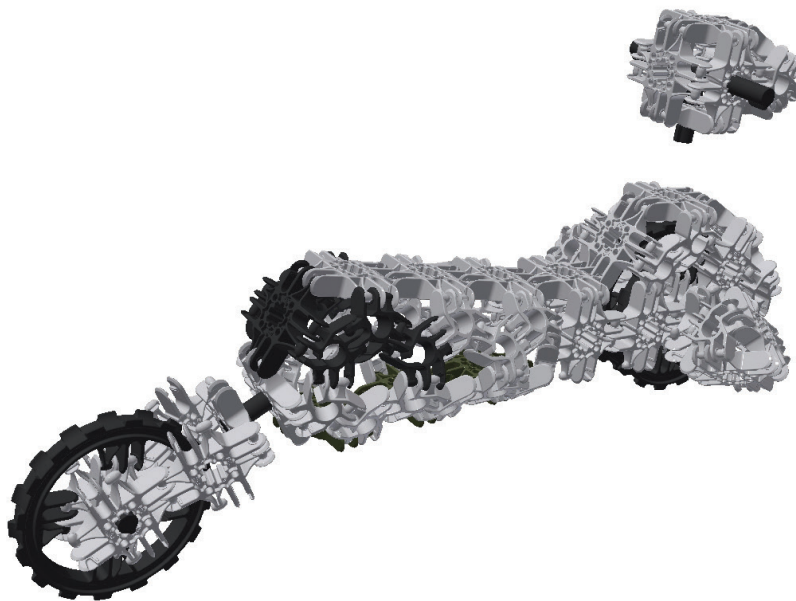




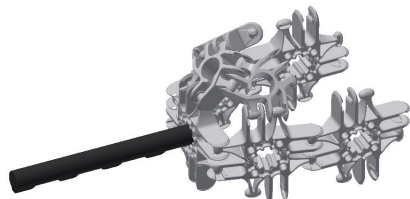
## Step 11



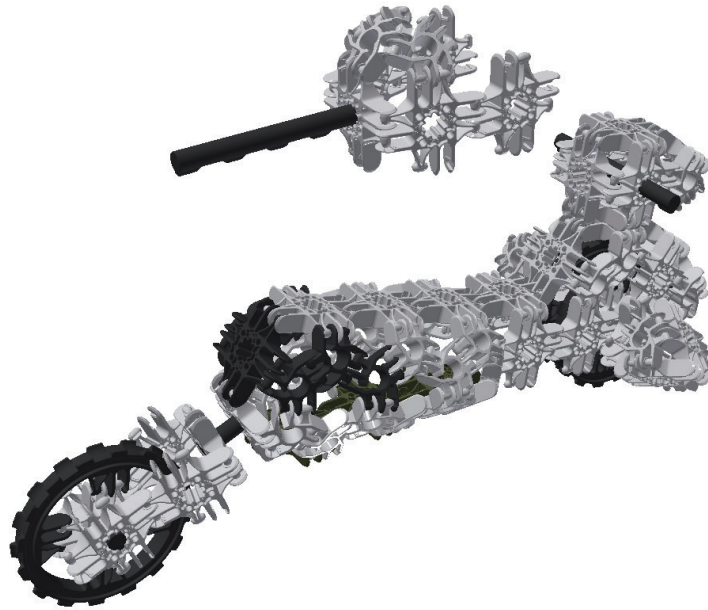
## Step 12



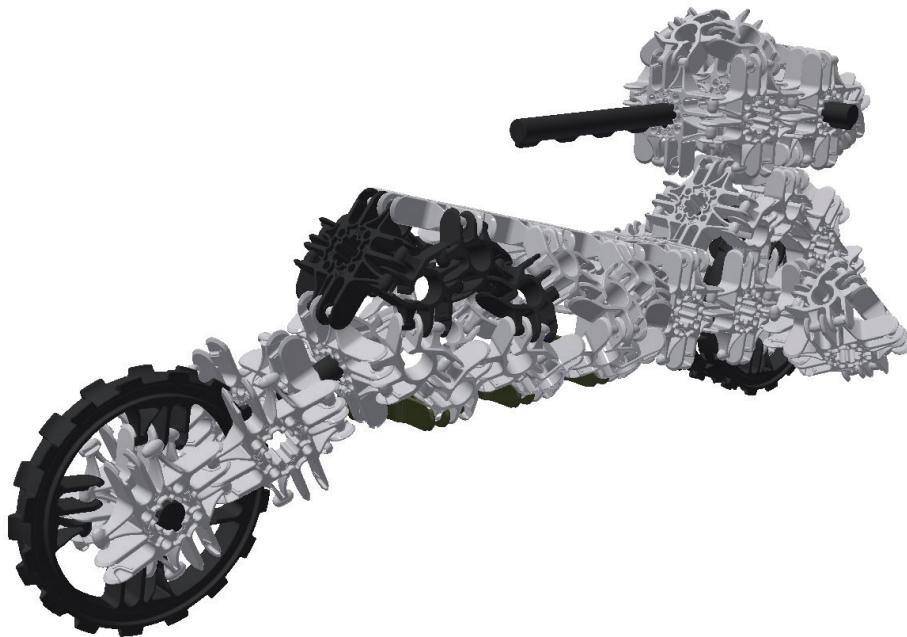
## Step 13



## Step 14



## Step 15



**Congratulations, you did it! Enjoy your Lux Force Wraith!**

Check out [www.luxblox.com](http://www.luxblox.com) for videos and more about our products.

# ***LUX FORCE SERIES***

## ***WRAITH***



## ***RAIDER***

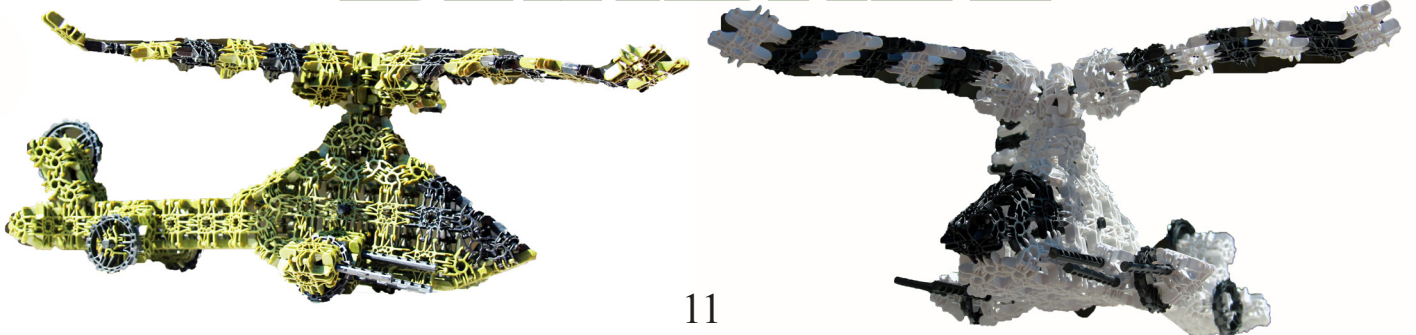


Collect  
All 8!

## ***SCORPION***



## ***BANSHEE***





Welcome to the world of linking thinking!™

Lux is the protean block that brings us movement, structure, and the diversity of nature as a natural bridge to connect, enjoy, and understand our universe.

Lux is the world's most versatile and dynamic 3D educational construction system.

Lux is engineered to snap together and rotate 240 degrees making structures that curve, bend, imitate nature, and move!

Now kids of all ages can learn how the world is put together through creative play.

Lux products are packaged and fulfilled by the skilled hands of people with disabilities through our partnership with Bridgeway Inc., a not-for-profit agency whose mission is to empower people with disabilities through training opportunities and the creation of meaningful employment.



**Lux are Proudly Made in the U.S.A.**

©2018 Lux Blox LLC, all rights reserved

US Patent US9643101B2

Global Patents Pending.

"Lux Blox" and "Building Genius" are trademarks of Lux Blox LLC. All images, designs, and the configuration of all products, names, logos, and items including those designated by © and ™ are copyright and trademarks or registered trademarks of Lux Blox LLC.

Please retain this information for future reference. Please remove all packaging before entrusted to a child.

Lux Blox LLC  
325 North Prairie Street  
Galesburg, IL 61401  
Ph. 1-844-256-9555  
E-Mail: [customer.service@luxblox.com](mailto:customer.service@luxblox.com)  
[facebook.com/luxblox](https://facebook.com/luxblox)  
[instagram.com/luxblox](https://instagram.com/luxblox)

This book is a work protected by copyright, thus, any unauthorized copying or reproduction of the content is strictly prohibited. In order to use any or all content, you must receive the consent of LUX BLOX LLC, the copyright holder and owner of its publication rights..