



LUX FORCE

SCORPION

Snow Camouflage

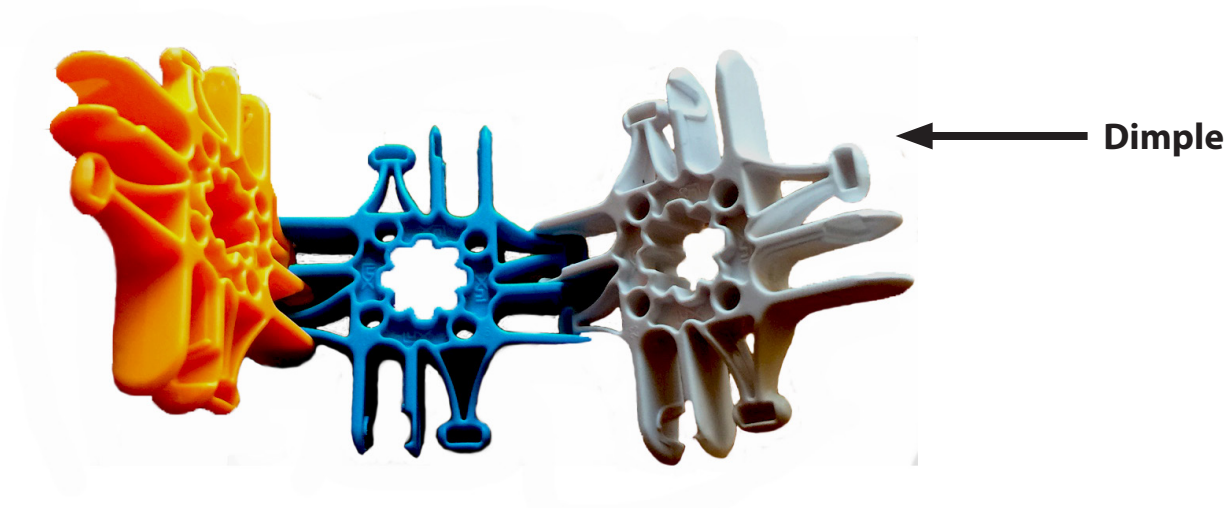


Getting Started with Lux™

Here are a few of the things you'll want to know about Lux™ before getting started. For more ideas, or if you prefer to watch a “how-to” video, please visit our website at www.luxblox.com.

Dimples

The dimples are the rectangle-shaped cavities on the egg-shaped connector. One thing to keep in mind when building with Lux™ is to be consistent with the direction your dimples are facing. Make sure all the dimples are facing the same direction - either all ‘in’ or all ‘out’, so they will all connect to each other. Otherwise, you may need to go back and remake parts.



The Egg Goes in the Nest

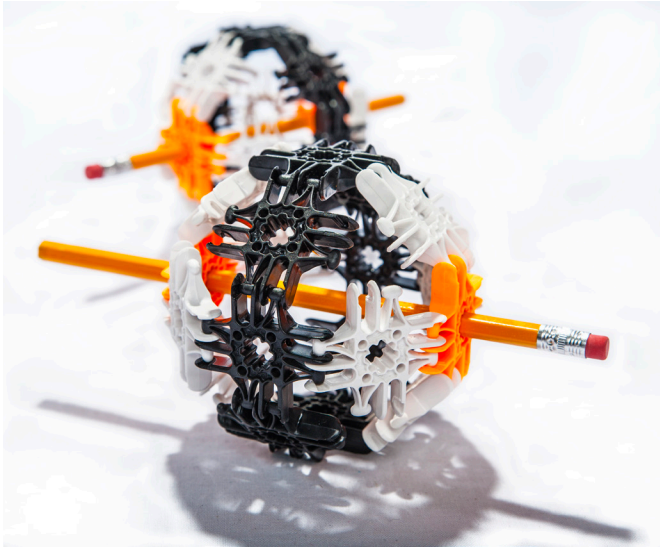
When connecting Lux™, simply push the connectors together so each egg-shaped part goes into each U-shaped “nest” and the Lux™ will snap into place. Once it snaps, it becomes a strong hinge with 240 degrees of rotation.



Go to www.luxblox.com to learn more and see what others are building with Lux™!

Unsticking Your Cube

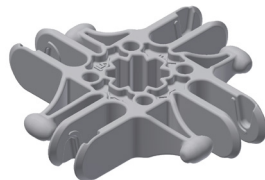
If you make a Lux™ cube, you will discover that it is not easy to take it apart. It is very easy to solve this by just inserting a pencil or dowel rod into the hole of a Lux™ and prying open your cube.



Parts List for Scorpion Snow Camouflage



#2 Axle
Qty: 1



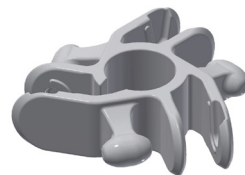
Grey Square
Qty: 35



Black Square
Qty: 4



#5 Axle
Qty: 1



White Trigon
Qty: 53



Black Trigon
Qty: 8



#7 Axle
Qty: 2



Triangle Wheel
Qty: 4



Trigon Wheel Rubber Bands
Qty: 4

LUX FORCE

SCORPION

On Mars, the Marines of the 7th ANGLICO (Marines trained for space combat) were nicknamed the “Lux Force” by the colonist’s children when the children helped the Marines to make weapons, battlements, and vehicles in the war against the Phage using Lux Blox. The name stuck and as the war raged on, the ranks of the Lux Force swelled as more colonists joined to fight the Phage.

Scorpions are constructed out of Lux Blox made on Mars from CTG (Covetic Titanium Graphene). CTG is an incredibly strong and virtually indestructible super-material, capable of stopping laser and projectile fire, and it has the ability to bend, making it ideal for Lux Blox construction techniques.

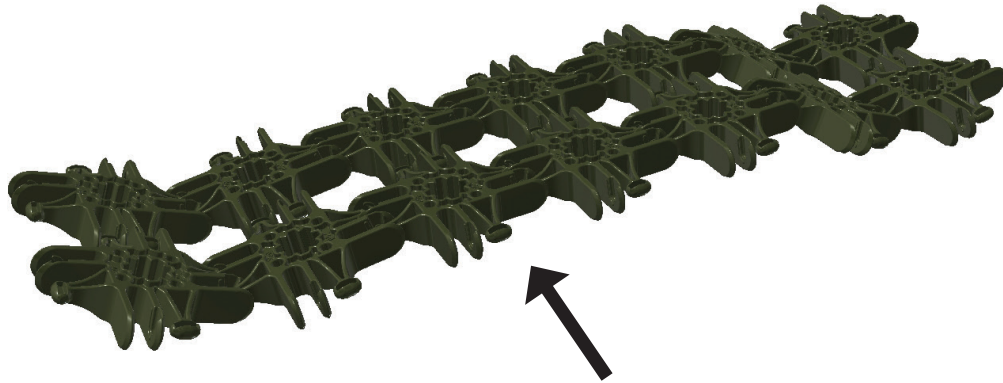
The Scorpions provide Lux Force an excellent advanced recon and assault vehicle which is able to quickly maneuver around some of the much larger Phage. This proved crucial at the battle at Syrtis Major Planum, site of the ill-fated Musk Colony and Titanium refineries. A trio of Scorpions were able to flank the enemy and single-handedly destroy 72 Phage before they were overtaken. This action gave colonists time to evacuate the refinery before it was overrun with Phage.

The Scorpion is powered by a 300 horsepower electric motor with an M-Jet 4 fueled turbine DC generator, 100 hour battery, and has a top speed of 140 miles per hour. It can sustain 3 adults for one week without resupply. The Scorpion’s 25 caliber XM25 Electric Spool Gun and can be operated by any of the occupants.



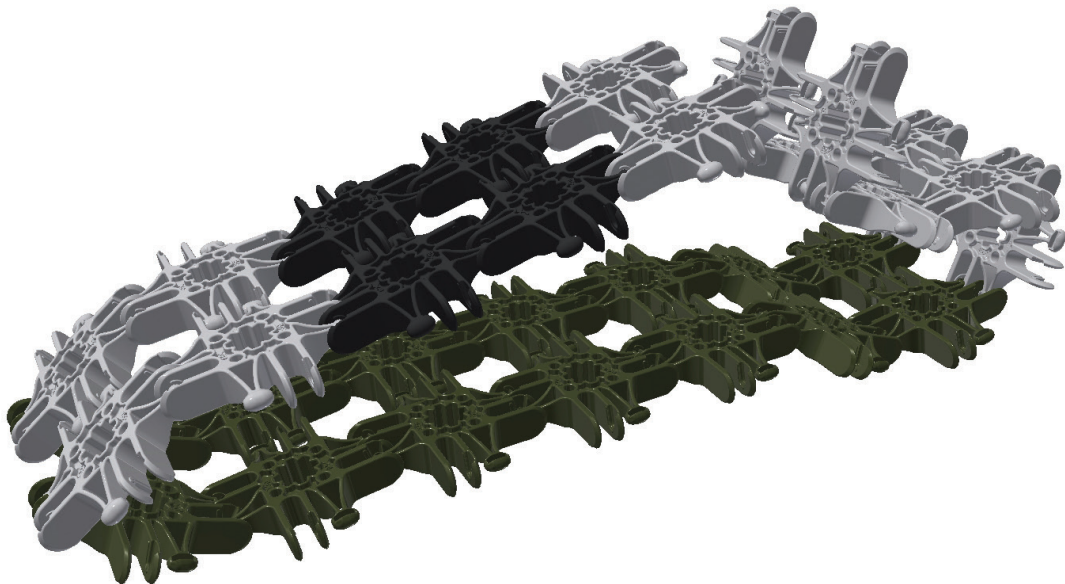
Step-by-Step Instructions

Step 1

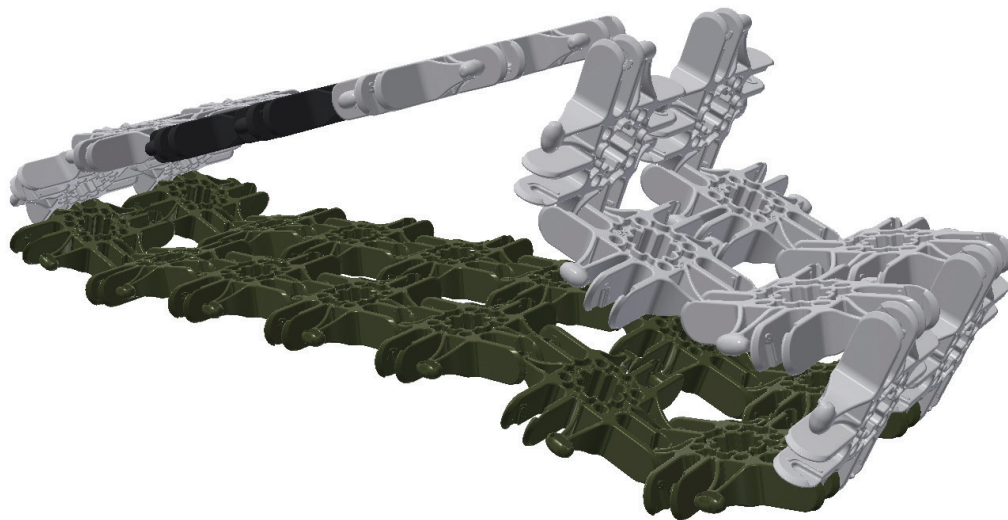


NOTE: Not actual color. Color darkened to differentiate floor from walls of vehicle.

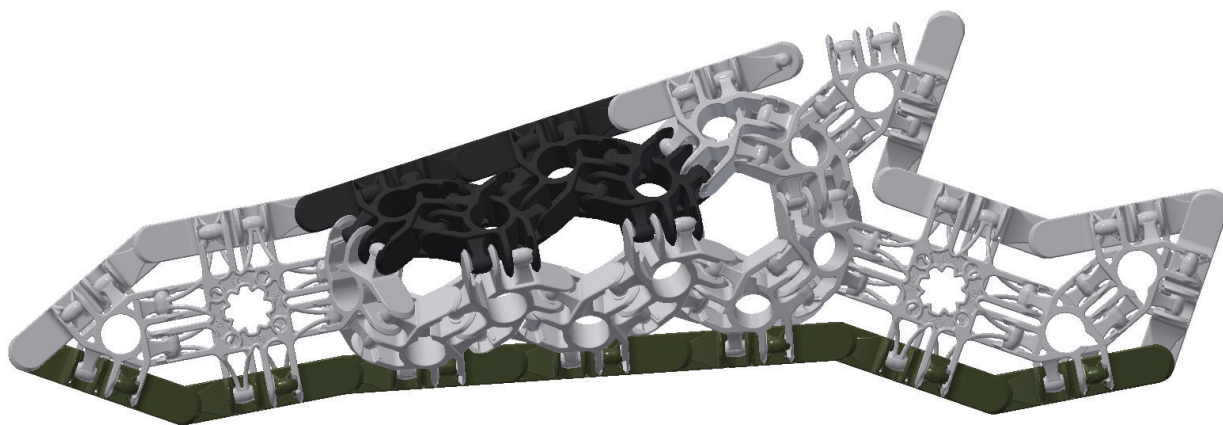
Step 2



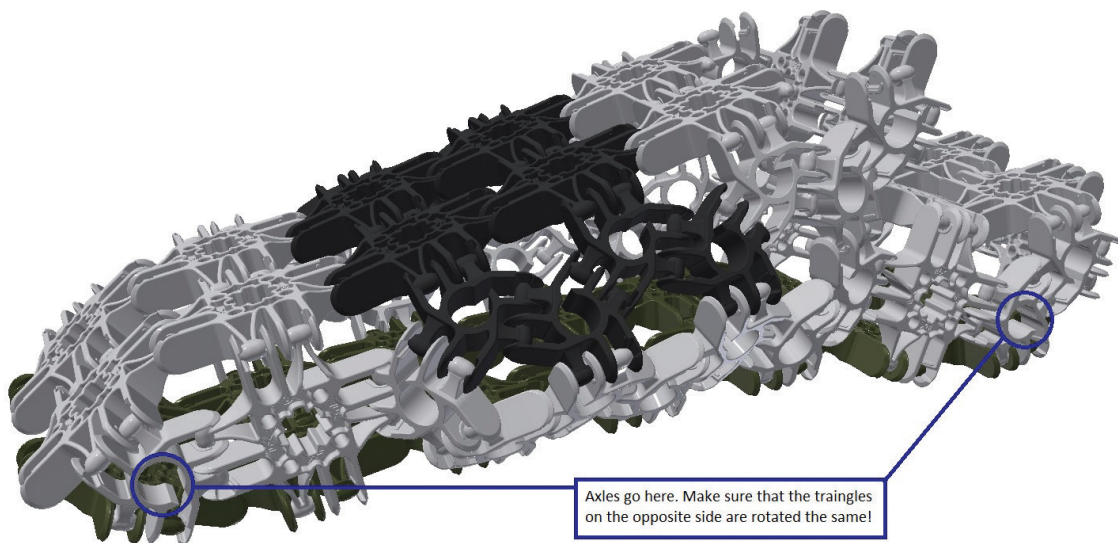
Step 3



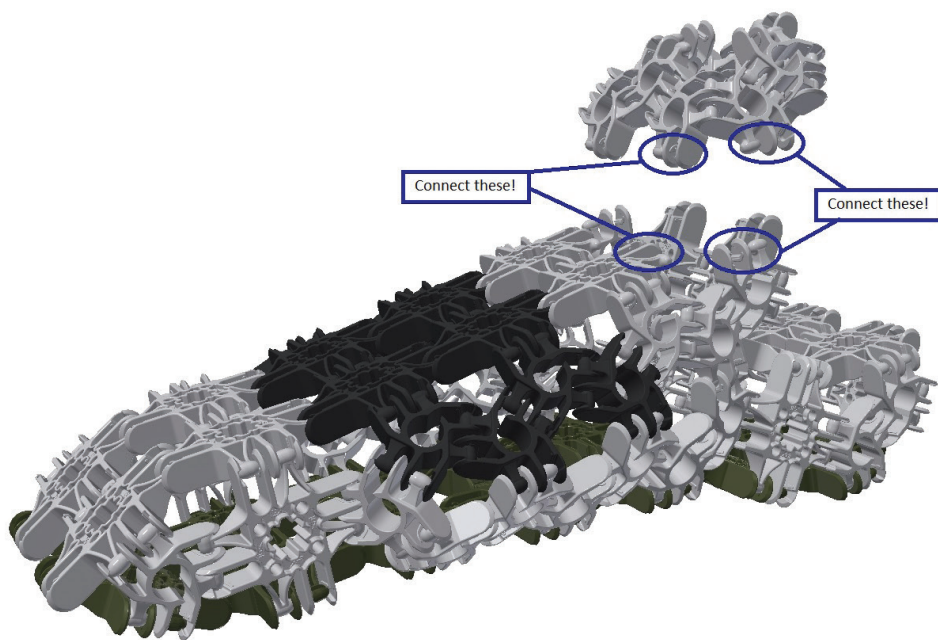
Step 4



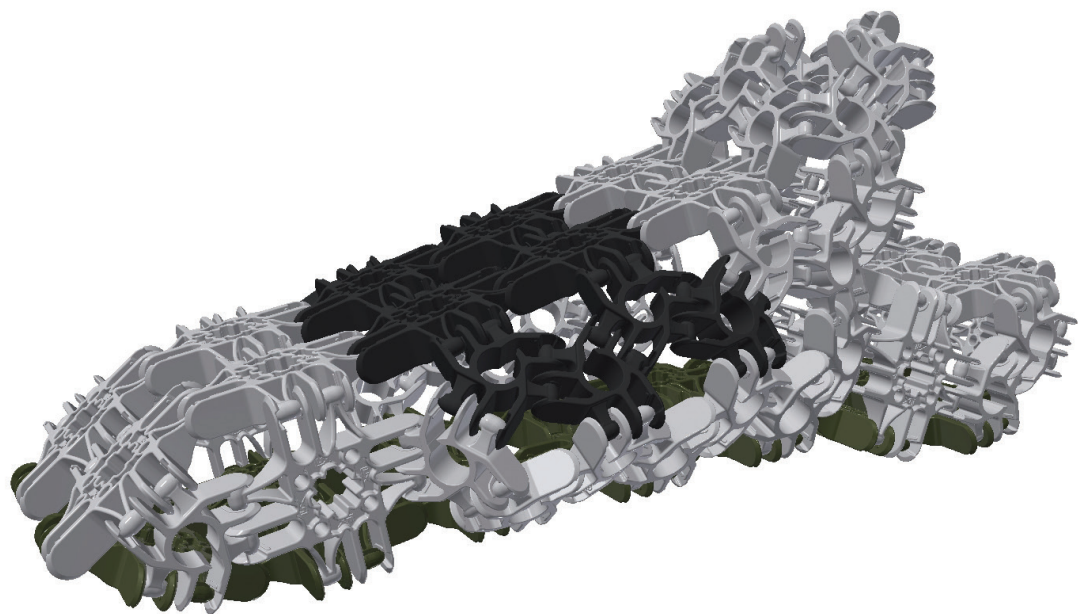
Step 5



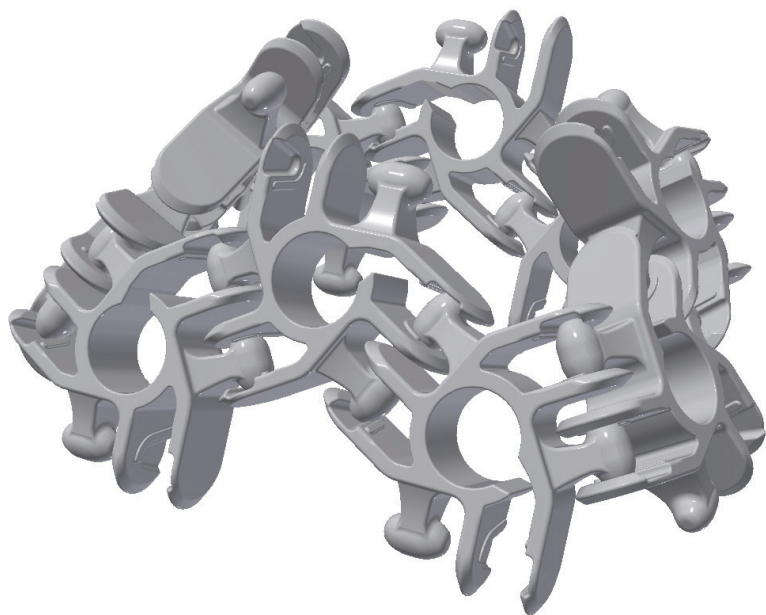
Step 6



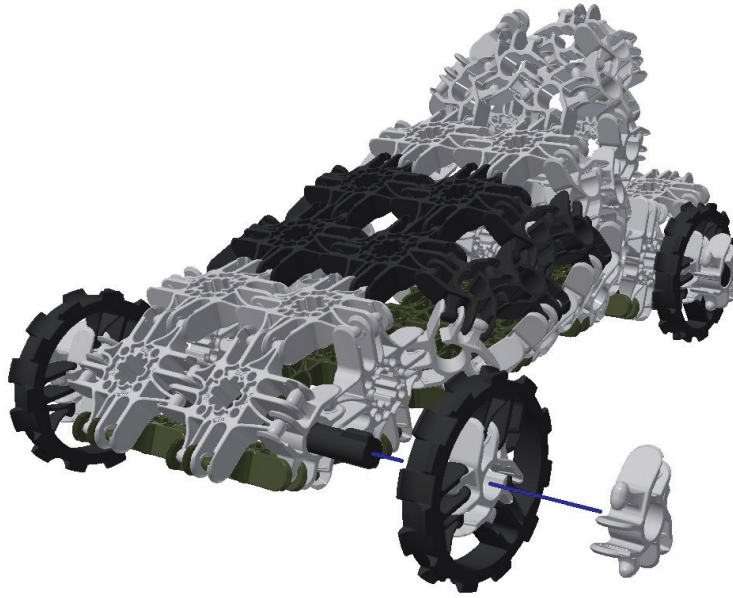
Step 7



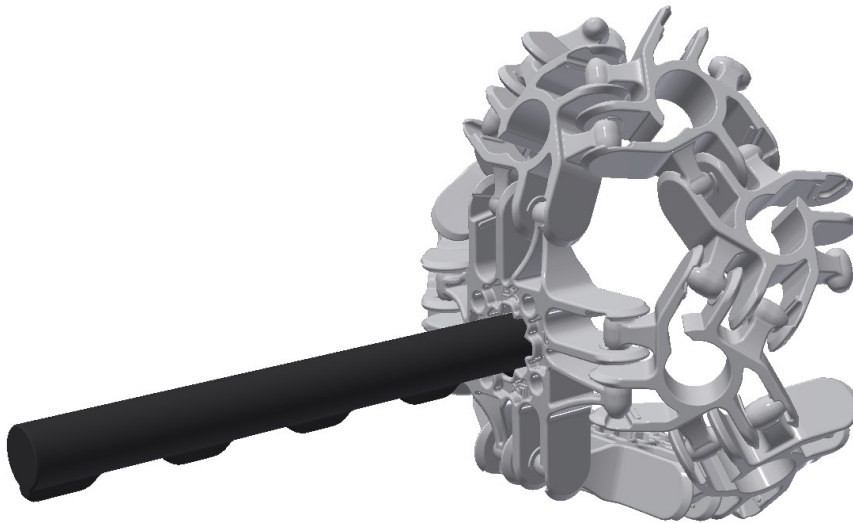
Step 8



Step 9



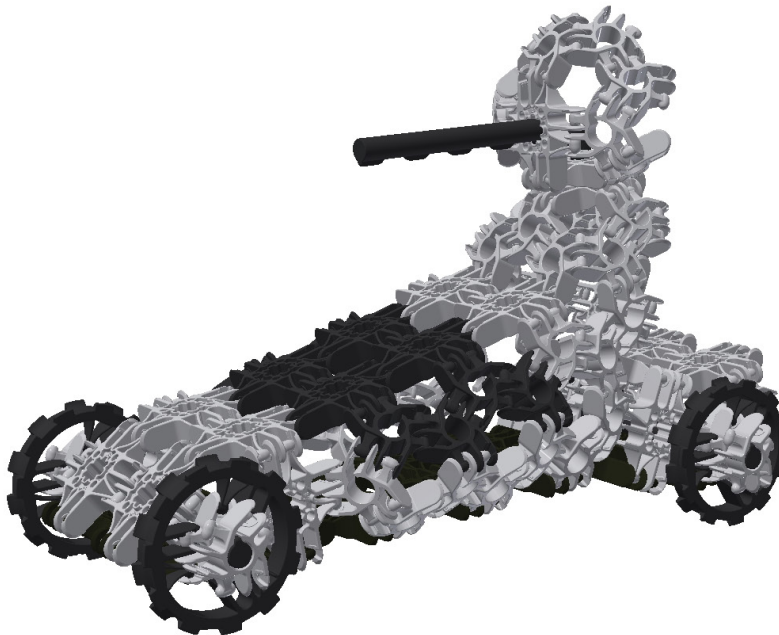
Step 10



Step 11



Step 12



Congratulations, you did it! Enjoy your Lux Force Scorpion!

Check out www.luxblox.com for videos and more about our products.

LUX FORCE SERIES

WRAITH



RAIDER

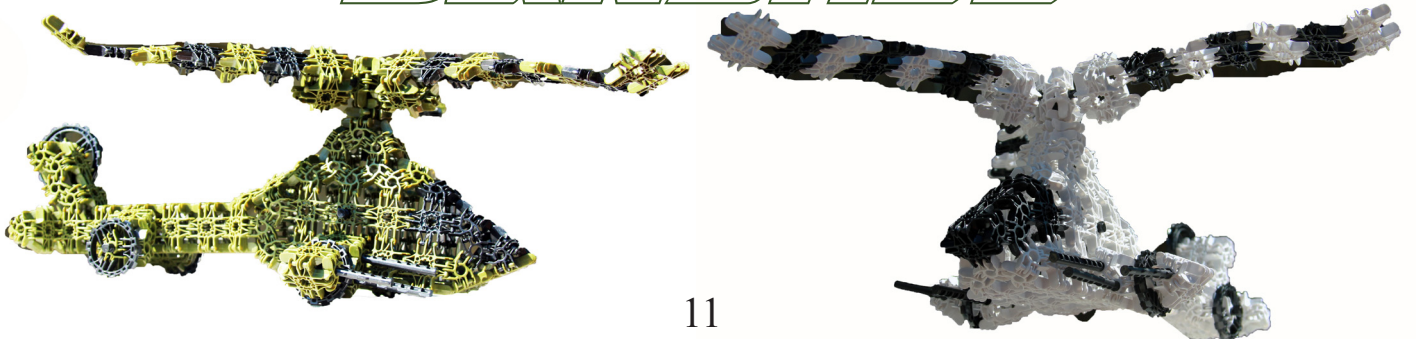


Collect
All 8!

SCORPION



BANSHEE





Welcome to the world of linking thinking!™

Lux is the protean block that brings us movement, structure, and the diversity of nature as a natural bridge to connect, enjoy, and understand our universe.

Lux is the world's most versatile and dynamic 3D educational construction system.

Lux is engineered to snap together and rotate 240 degrees making structures that curve, bend, imitate nature, and move!

Now kids of all ages can learn how the world is put together through creative play.

Lux products are packaged and fulfilled by the skilled hands of people with disabilities through our partnership with Bridgeway Inc., a not-for-profit agency whose mission is to empower people with disabilities through training opportunities and the creation of meaningful employment.



Lux are Proudly Made in the U.S.A.

©2018 Lux Blox LLC, all rights reserved

US Patent US9643101B2

Global Patents Pending.

"Lux Blox" and "Building Genius" are trademarks of Lux Blox LLC. All images, designs, and the configuration of all products, names, logos, and items including those designated by © and ™ are copyright and trademarks or registered trademarks of Lux Blox LLC.

Please retain this information for future reference. Please remove all packaging before entrusted to a child.

Lux Blox LLC
325 North Prairie Street
Galesburg, IL 61401
Ph. 1-844-256-9555
E-Mail: customer.service@luxblox.com
facebook.com/luxblox
instagram.com/luxblox

This book is a work protected by copyright, thus, any unauthorized copying or reproduction of the content is strictly prohibited. In order to use any or all content, you must receive the consent of LUX BLOX LLC, the copyright holder and owner of its publication rights..