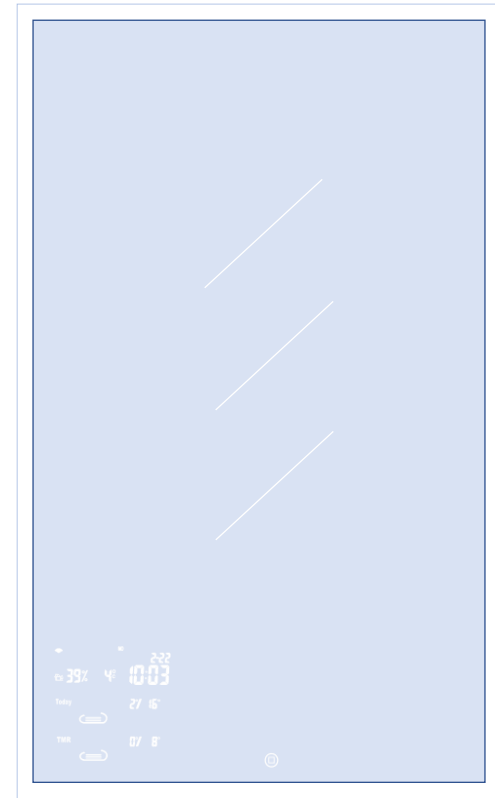


EVOKOR

LED Bathroom Smart Mirror



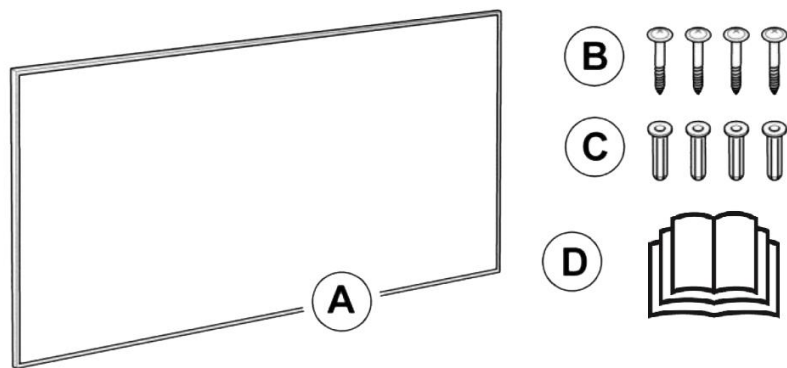
Installation & Operation Manual for

EVOKOR LED Mirror

READ BEFORE USE

- Thank you for purchasing this Evokor LED smart mirror.
- Please read the instructions carefully before attempting to install, operate or service the product.
- Please retain this booklet for future reference.
- Pictures for reference only, subject to our available products

SCOPE OF DELIVERY



A LED Smart Mirror ×1

B Screws×4

C Dowel ×4

D Manual ×1

Evokor LED smart mirror is a stylish & modern luxury Led illuminated bathroom mirror with defogging function and smart display. It does not only serve as a decoration of your bathroom, but also provides perfect glance of your beauty.

Included in this document are all necessary installation and operating instructions.

If you encounter any difficulties while installing your LED mirror, installation support is available by email service@evokor.com.

If a return is necessary, please use original packaging.

CONTENTS

1 | Safety Introduction

2 | Cleaning Information

3 | Installation

4 | Product Information

5 | Instruction of Touch Button

6 | Instruction of Wifi Weather Connection

7 | Troubleshooting

8 | Warranty

1 | SAFETY INTRODUCTION

Read this manual carefully before starting or using the device. Always store the manual in the immediate vicinity of the device or its site of use!

Warning

Do not ceiling mount those devices, designed for wall only!
Or else it may cause burning, fire and falling off risk!

Warning

This appliance can be used by children aged from 8 years and above and persons with reduced physical, sensory or mental capabilities or lack of experience and knowledge if they have been given supervision or instruction concerning use of the appliance in a safe way and understand the hazards involved.

Children shall not play with the appliance. Cleaning and user maintenance shall not be made by children without supervision.

Warning

Children of less than 3 years should be kept away unless continuously supervised.

Children aged from 3 years and less than 8 years shall only switch on/off the appliance provided that it has been placed or installed in its intended normal operating position and they have been given supervision or instruction concerning use of the appliance in a safe way and understand the hazards involved.

Children aged from 3 years and less than 8 years shall not plug in, regulate and clean the appliance or perform user maintenance.

Warning

Do not use the device in small rooms if persons are present who cannot leave the room independently and who are not under constant supervision.

Warning

Some parts of this product can become very hot and cause burns.

Particular attention has to be given where children and vulnerable people are present. To avoid the possibility of burns, the following people should be much more careful when using the heaters: infants and kids, people with sensitive skin, the old, the sick, people who is drunk, people who takes sleeping pills.

- Make sure that the electrical circuit breaker is shut off at the main panel before wiring or servicing your LED mirror.
- Be sure that applied voltage is conformed to the voltage indicating in name plate, and power supply must be properly grounded.
- All wiring must be in accordance with the National Electrical Code (NEC) and Canadian Electrical Code (CEC) and should be performed by a licensed professional who is certified to do electrical wiring.
- Do not use the device with wet or damp hands.
- Never place your LED mirror inside a shower, sauna, or steam room.
- Never insert any objects or limbs into the device.
- Do not cover or transport the device during operation.
- Never stand, sit on the device.
- This appliance is not a toy! Keep away from children and animals. Do not leave the device unattended during operation.
- Check accessories and connection parts for possible damage prior to every use of the device. Do not use any defective devices or device parts.
- Ensure that all electric cables outside of the device are protected from damage (e.g. caused by animals). Never use the device if electric cables or the power connection are damaged!
- Before carrying out maintenance, care or repair work on the device, remove the mains plug from the mains socket. Hold onto the mains plug while doing so.
- Switch the device off and disconnect the power cable from the mains socket when the device is not in use.

- Do not under any circumstances use the device if you detect damages on the mains plug or power cable. If the supply cord is damaged, it must be replaced by the manufacturer, its service agent or similarly qualified persons in order to avoid a hazard. Defective power cables pose a serious health risk.
- During the installation of the device observe the minimum distances from walls and other objects as well as the storage and operating conditions specified in the related chapter.
- The device must be placed where the switches and controllers cannot be touched by a person in a bathtub or shower.
- Do not unplug by pulling on the cable. To unplug, grasp the plug, not the cable.

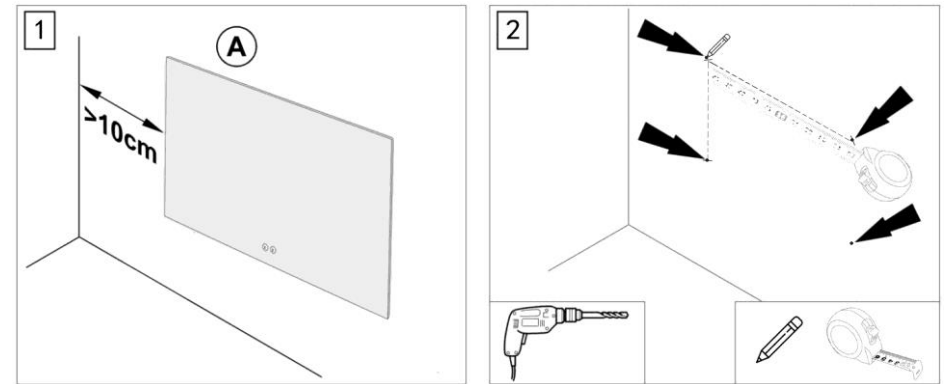
2 | CLEANING INFORMATION

- ☑ The appliance must be switched off and unplugged before taking regular cleaning. Otherwise, it may cause electric shock.
- ☑ The appliance needed only external cleaning and care regularly.
- ☑ Please use some medicinal alcohol clean the surface with damped soft cloth. Never clean it under running water. Do not use thinner, toluene, benzene, acidic/alcoholic cleaning agents, or any chemical clothes on the appliance.
- ☑ After regular care and cleaning, well pack it into the original packing box, then put it to dry and cool environment for storage.
- ☑ Wind and keep dry the cable when not in use.

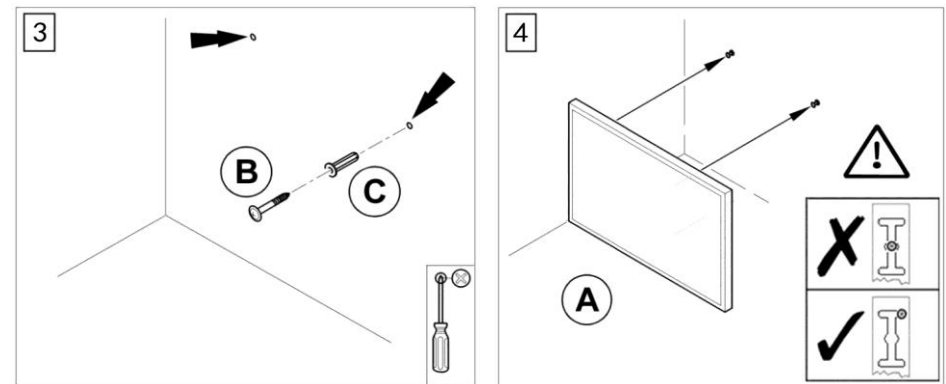
3 | INSTALLATION

This appliance must be installed in accordance with the instructions in the manual and the NEC and CEC guidelines relating to electrical fixtures in bathrooms. The LED mirror must be on a GFCI-protected circuit and be wired by a professional who is certified to do electrical wiring.

- (1) Choose the mounting position, keep the required minimum distances (Please select correct mounting holes in order to install the mirror correctly)



- (2) Measure the distance of mounting holes at mirror back and Mark the positions for the bore holes onto wall.
- (3) Drill the holes. Insert the screws into the dowels and fasten the screws. The screws should protrude approx.1.5 cm from the dowels;



- (4) Tear off the back protective film, Hang the mirror (A) on the screws and move it to one direction.



WARNING:

Measure all dimensions prior to rough-in and installation.

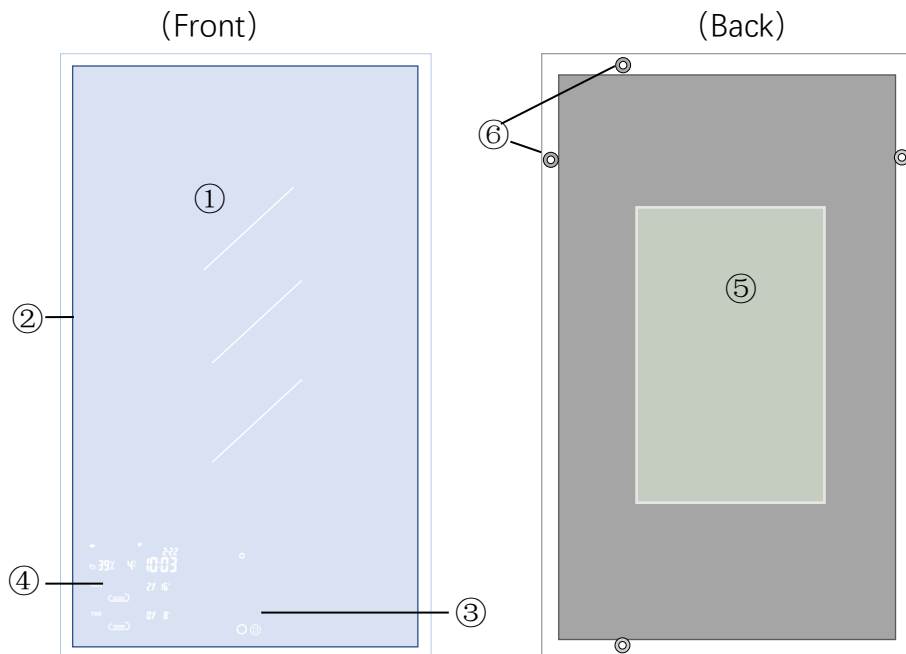
If hardwire the LED mirror, electrical box must be securely attached to a stud. The LED mirror only must be installed less than 6 feet (183cm) from properly grounded outlet. Do NOT use an extension cord.

4 | PRODUCT INFORMATION

TECHNICAL DATA

Model	LG0806-WLD	LG1006-WLD	LG1206-WLD
Size	23.6×31.5 inch	23.6×39.4 inch	23.6×47.2 inch
Thickness (Inc. installation)	1.8 inch	1.8 inch	1.8 inch
Rated Voltage	100-120V/50-60HZ		
Defogging Power	35W	50W	66W
LED Light	3000K-6000K adjustable		
Switch	Smart Touch Sensor Switch		
Weather Source	Real-time weather data from Internet		
Installation	Vertically / Horizontally		



STRUCTURE




- ① Mirror Surface
- ② LED Strip Light
- ③ Touch Switches
- ④ Display Screen
- ⑤ Anti-fogging Film
- ⑥ Mounting Holes

5 | INSTRUCTION OF TOUCH BUTTON

The backlit of the touch buttons are in the active (lighted white) status once power on.

Button	Actions	Output
	Single Click	Turn on/off the LED light
	Double Click	Switch the LED color between 3000K, 6000K or 3000K+6000K
	Long Press	Brightness + or -
	Double Click	Turn on/off the screen display
	Long Press	Turn on/off heating or defogging

6 | INSTRUCTIONS OF WIFI WEATHER CONNECTION

1. Plug the mirror into a power socket, the mirror screen will enter full display mode (Figure 6-1), The wifi-symbol  at top-left corner of display starts flashing. Next, the mirror screen display a four-bit character(Figure 6-2,e.g., Here the character is 5bE6). Remember this four-bit character, which is the last four bits of the product ID code.

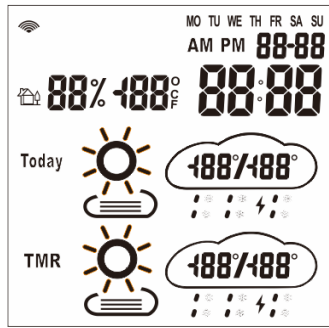


Figure 6-1

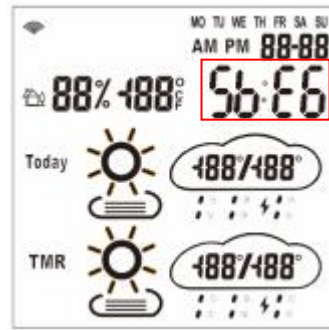


Figure 6-2

- From your mobile device, go to **Settings > WLAN**, find a hotspot named "SmartClock_XXXXXX" in WIFI list of available network (Figure 6-3), and find the device whose last four bits of "XXXXXX" are the same as the four-bit character in the previous step.(e.g.,Here the four-bit characters in the previous step is "5bE6", then you may find a hotspot named "SmartClock_435BE6" in the network list), Pick and connect this hotspot with entering its password **12345678**(Figure 6-4).



Figure 6-3

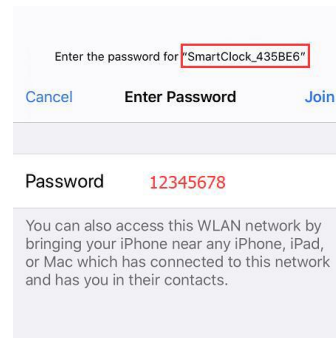


Figure 6-4

- Wait for 5-10 seconds, it will automatically jump to the login interface(On some mobile device, you may have to click the "SmartClock_XXXXXX" hotspot in order to enter into login interface), click **configure**(Figure 6-5)or **WIFI** for setting up network. Select your home WIFI network and enter password, then click **SUBMIT** (Figure 6-6). Connection will be completed when the wifi icon (on mirror display) stops blinking.

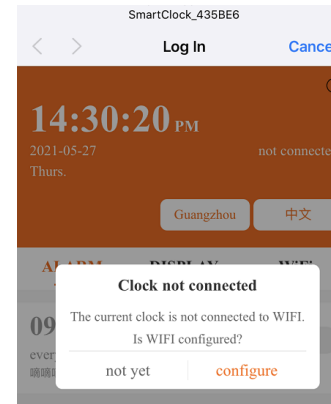


Figure 6-5

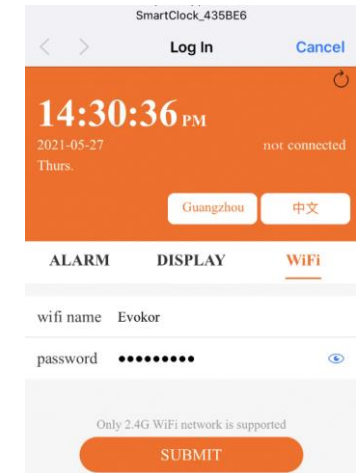


Figure 6-6

- Click **City Selection** to type your location (Or select **IP** to locate your city automatically), the mirror screen will update to the time/date and the weather data of today and tomorrow for the selected city (Figure 6-7). Click **English/Chinese** to select language interface.

In the **Alarm** interface, users can edit several groups of alarms with setting the ringing volume and ringing type etc (Figure 6-8).
In the **Display** interface, users can set the 24H/12H display mode; Date and time formats, temperature unit selection; screen brightness and sleep mode etc (Figure 6-9).

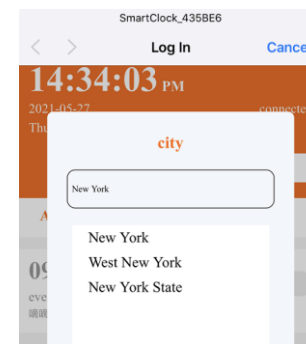


Figure 6-7

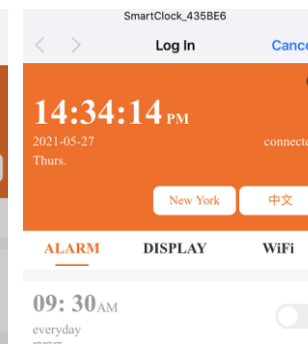


Figure 6-8

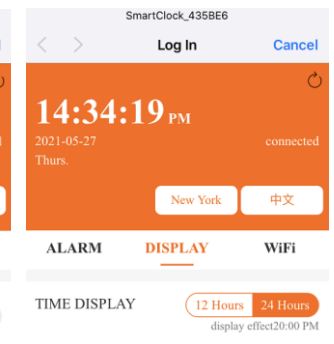


Figure 6-9

7 | TROUBLESHOOTING

If malfunction occur nonetheless, check the device according to the following list.

Type of problem	Reason	Measure
SmartClock-xxxxxx is not visible in wifi list	<ol style="list-style-type: none"> 1. If it occurs during the initial setup, the hotspot happened not to be scanned. 2. It occurs when in use, it maybe in the upgrade process 	<ol style="list-style-type: none"> 1. Refresh the wifi list or re-power on the mirror. 2. Observe for a period of time, if it's not visible for over 24 hours, please power off mirror for 10-30minutes, and re-power on to check or contact us.
The wifi icon keeps flashing	<ol style="list-style-type: none"> 1.It does not connect to the home wifi successfully. 2.Home wifi is abnormal 3.In the upgrade process. 	<ol style="list-style-type: none"> 1. Reconnect the mirror with home wifi. 2.Restart your router. 3. Observe for a period of time, please contact us for solution if it keeps flashing over 24 hours.
Incorrect time, date and weather data on mirror display	It may locate to a wrong city.	Locate to correct city.
Weather data is inaccurate or differs from reality	<ol style="list-style-type: none"> 1. It may locate to a wrong city. 2.It's normal. 	<ol style="list-style-type: none"> 1.Check if it locates to correct city. 2. Weather data comes from different sources, it's impossible to make 100% accuracy.

Please feel free to contact me if you experience any further problems.

8| WARRANTY

THANK YOU FOR CHOOSING TO BUY AN EVOKOR APPLIANCE.

Customers can contact us for repairing or replacement of your EVOKOR appliance if it is found to be defective due to faulty materials, workmanship or function within 1 years of purchase or delivery.

EVOKOR does not guarantee the repair or replacement of a product where a defect is the result of:

- Damage caused by not carrying out the recommended appliance maintenance.
- Accidental damage, faults caused by negligent use or care, misuse, neglect, careless operation or handling of the appliance which is not in accordance with our Operating Manual.
- Use of the appliance for anything other than normal domestic household purposes.
- Faulty installation.
- Repairs or alterations carried out by parties other than Evokor or its authorised agents.

If you are in any doubt as to what is covered by your guarantee, please contact us.

Warranty Card

NAME _____ TEL _____

ADD _____

MODEL _____ ORDER NO. _____

Date _____

Failure Description

