

Specifications

Specifications

Name:	MedicAir®
Model:	FZHCE05-MWEM
Rated voltage:	220V-240V
Rated frequency:	50-60Hz
Input power:	85W
Main material:	Aerospace Cold-rolled Steel Housing
Dimensions:	(H)880 x (W)300 mm
Sensors:	Laser particulate sensor (0.1-0.3um) / humidity and temperature sensor / TVOC odour sensor
Net weight:	14kg
Standby-power:	≤2W
Noise level:	≤68dB (A)
Indication:	LED indicators and figures
Control:	Touch, remote and WiFi

*CADR values are ±10% and given with the H13 Filter in place, values will vary depending on wind speed settings and your chosen filter configuration. Air changes influenced by obstructions and other sources of turbulence.

Parameters

H13 clean air delivery rate:	up to 605m³/h
Particulate matter CCM:	P4-level
Particulate matter purification-related energy efficiency:	10.9 (high-efficient level)
Sterilization rate:	up to 99.99%
Timer settings:	1-8 hours
Fan speed settings:	1-2-3-4-Auto
Pollution-level identification:	Numerical value; light strips
Remote control:	≤6m

Certification

Class 13 HEPA +/- Activated Carbon/UVC Filter Chamber
Model FZHCE05-MWEM: <ul style="list-style-type: none">- Low Voltage Directive (LVD) 2006/95/EC- Electromagnetic Compatibility Directive(EMC)2014/30/EU- Radio Equipment Directive (RED) 2014/53/EU- Restriction of the Use of Certain Hazardous Substances in Electrical and Electronic Equipment (RoHS) 2015/863/EU

Healthy Air Anywhere

Combining innovative technology with outstanding design, we bring you a sophisticated air purification system to enhance levels of protection, performance and reassurance.

Our state of the art MedicAir® system eliminates the invisible contaminants in a room and disperses clean air filtered for viruses, bacteria and particulates. With its ultra-high power 24W UVC technology, 360-degree air intake and multiple stage filtration process, it's quick, efficient and quiet. Designed and developed for quality and longevity with widely trusted technology.



Read the maintenance instructions before opening the appliance or replacing UV-C emitter.



Appliances that are obviously damaged must not be operated.

For all safety warnings please see page 5



+44 (0)1932 553023 |  hello@medicair.co.uk



What's Included

- » 1 x MedicAir® unit
- » 1 x Power cord (Country specific)
- » 1 x Remote control
- » 1 x Remote battery
- » 1 x Combined Filter:
 - » Nano Hybrid Activated Carbon
 - » HEPA H13
 - » TiO2 catalysed UVC Reaction Chamber

User Guide

Filter Guide Replacement/Installation

When started, the air purifier will automatically calculate the remaining usage of the filter, according to the unit's running conditions and the internally stored algorithm. When the filter needs to be replaced, the word '**filter**' on the panel will continuously flash to alert you. Once you've replaced the filter, turn the unit back on and hold the sleep button for five seconds to turn the filter light off.



This appliance contains a UV-C emitter.



Please handle used filters with care and dispose of appropriately.

Timer Setting Function

Whenever the air purifier is switched on, the screen will show current PM2.5 concentration on the control panel. By pressing the timer button, located on the bottom right of the screen, you will see a number on the screen alongside the letter H. If you select '1H' for example, the purifier will switch off after 1 hour. This number can be increased with further taps on this timer icon up to a maximum of 8H. If you select '0H', the purifier will exit timer mode and the timer light will go off. When you select your chosen timer setting (e.g. 3H), you need to wait ten seconds for the timer to activate. Once 3H (for example) has disappeared from your screen, your timer has been set.

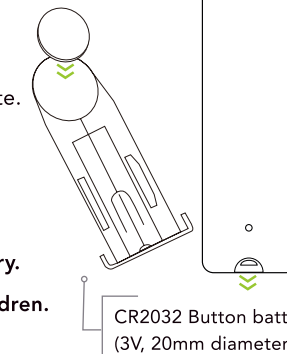
Tilt Detection

If the air purifier tilts significantly from its upright position, it will automatically power off. When placed back upright your machine will default to standby. Press the power button (via the touchscreen) and if the machine defaults to "ReAKT" mode then it is safe to use.

Remote Control - Battery Installation

Step 1 - On the reverse side of the remote, press down on the small button and pull towards you. The battery tray will slide out.

Step 2 - Place the battery into the circular area. The battery tray should then be slotted back inside the remote.



The cells should be disposed of properly, including keeping them away from children;



Used batteries may cause injury.

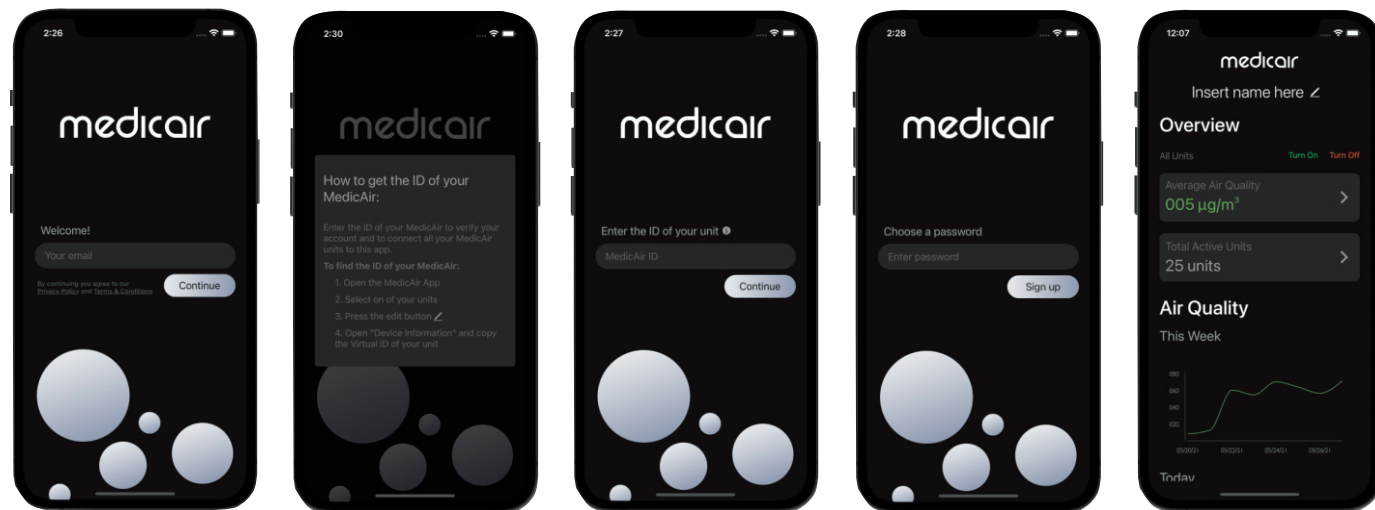


Keep batteries away from children.



WARNING Chemical Burn Hazard. Keep batteries away from children.

This product contains a lithium button/coin cell battery. If a new or used lithium button/coin cell battery is swallowed or enters the body, it can cause severe internal burns and can lead to death in as little as 2 hours. Always completely secure the battery compartment. If the battery compartment does not close securely, stop using the product, remove the batteries, and keep it away from children. If you think batteries might have been swallowed or placed inside any part of the body, seek immediate medical attention.



STEP
②

STEP
③

STEP
④

STEP
⑤

STEP
⑦

Warnings

Moving

To move your air purifier ensure it's switched off and unplugged from its power source.

Installation

- » The air purifier may not work correctly if the filter cover plate is not installed properly.
- » Always ensure the inlets are more than 20cm away from anything that could obstruct the airflow, such as walls.

AC power cord

- » Do not excessively twist, pinch or bend the power cord, or the wire core will be exposed to the air and/or break.
- » Do not drag or pull the power cord when unplugging.
- » Do not use an AC socket that is not compatible.
- » Do not use the provided power cord in other devices.

In use

- » If the unit makes unusual sounds, smells, overheats, or the fan rotates irregularly, immediately turn the unit off.

- » Do not insert anything into the air inlet or outlet of the unit.
- » Keep hair, fabric and other items away from the unit as they may be sucked in, which can cause injury, and damage to the system.
Do not sit on the air purifier, stand too close to it or tilt it in any way.
- » Open the ventilation system when using with another combustion appliance in order to prevent carbon monoxide poisoning.

Precautions

- » This appliance can be used by children aged from 8 years and above and persons with reduced physical, sensory or mental capabilities or lack of experience and knowledge if they have been given supervision or instruction concerning use of the appliance in a safe way and understand the hazards involved. Children shall not play with the appliance. Cleaning and user maintenance shall not be made by children without supervision.
- » This appliance contains a UV-C emitter.
 - Unintended use of the appliance or damage to the housing may result in the escape of dangerous UV-C radiation. UV-C radiation may, even in little doses, cause harm to the eyes and skin.
 - Appliances that are obviously damaged must not be operated.
 - Read the maintenance instructions before opening the appliance;
 - The appliance must be disconnected from the supply before replacing the UV-C emitter.

Warranty

Terms and conditions

MedicAir DentAir Ltd will repair any MedicAir® issue arising from a structural defect or electrical defect for a period of 3 years, without charge. The liability will not exceed the amount you originally paid for the product. The warranty does not cover defects arising from negligence, product modification, unauthorised repairs, accidental damage, theft, loss or acts of God.

Cleaning and Maintenance

- ① Always turn off the power by disconnecting the plug from the socket before carrying out maintenance, cleaning or changing the fan position.
- ② Please make sure that your air purifier is completely stopped before cleaning.
- ③ Do not attempt to clean the HEPA/ Carbon filter with a grinding sponge, scouring pad or hard brush.
- ④ Do not apply force to the filter in an effort to remove gathered particulates.
- ⑤ When not in use, please store in a dry place with good ventilation.
- ⑥ Please ensure maintenance work is carried out by an authorised service centre.
- ⑦ If the power line or plug of the appliance is damaged, immediately stop using.
- ⑧ Children must not participate or be present during the user maintenance of the product.

WARNING

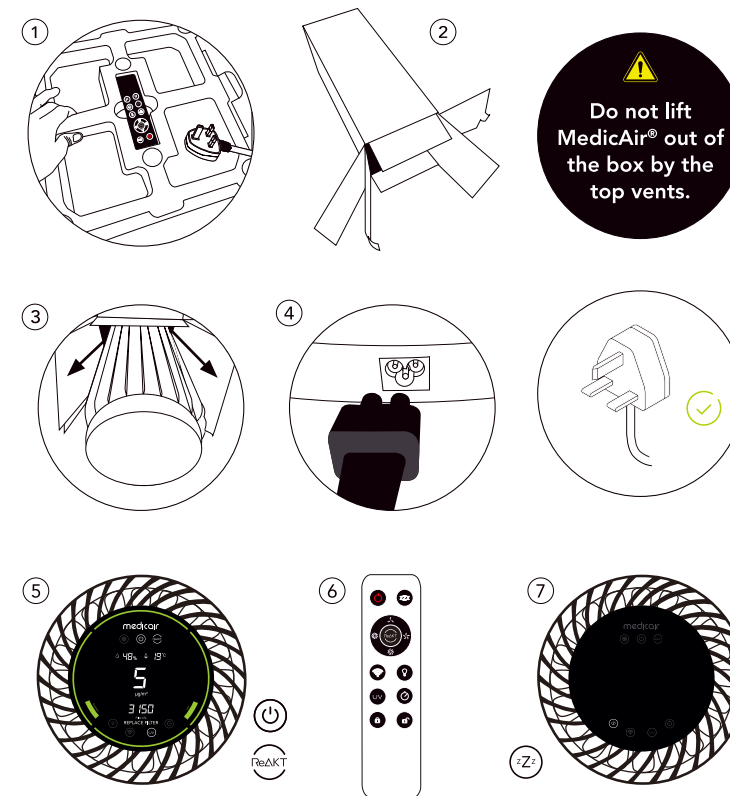
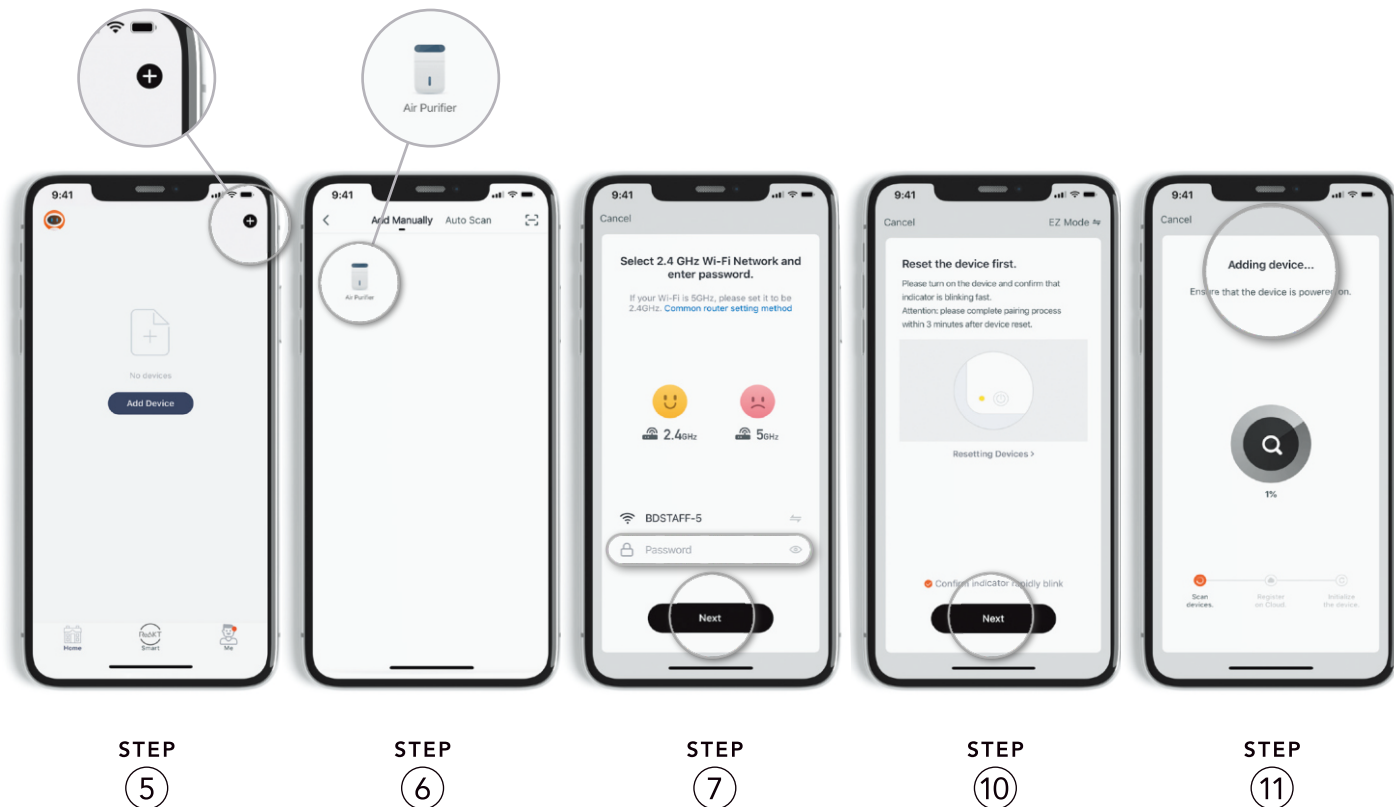
- ① **RISK OF ELECTRIC SHOCK** – These servicing instructions are for use by qualified personnel only. To reduce the risk of electric shock, do not perform any servicing other than that contained in the operating instructions unless you are qualified to do so.
- ② **Disconnect power cord** before cleaning the body, air outlet or opening the bottom to avoid electric shock.
- ③ **Turn off and unplug the power cord** before replacement of the HEPA Filter, Activated Carbon Filter and the UV lamp or unit maintenance.
- ④ **If the power cord is damaged**, it must be replaced by the service center or a similarly qualified person.

'MedicAir Data' Mobile App Connection Instructions





Before downloading this app - ensure you have set up and connected your devices via the 'MedicAir' App - see pages 13-14 .

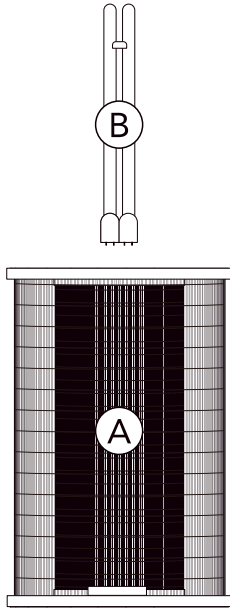
- ① Download the '**MedicAir Data**' app from either the Apple App Store or Google Play store.
- ② Once in the app you will be prompted to enter an email to access your account. Enter the same email you have used to login to the '**MedicAir App**' - see pages 13-14. Enter this chosen email and press '**Continue**'.
- ③ You will now be prompted for the '**Virtual ID**' to one of your existing MedicAir units. To find this navigate back to your '**MedicAir App**' (as introduced on pages 13-14) and click on one of your units you have connected. Once on that unit - tap the top right corner of the screen. Once the menu comes up - press '**device information**'. Once you pass to the next screen your '**virtual ID**' will be shown - use the '**copy**' button to copy to clipboard.
- ④ Once you have copied your '**Virtual ID**' go back to the '**MedicAir Data**' App. Where prompted for a '**Virtual ID**' - simply paste your ID. Press '**Continue**'.
- ⑤ You will now be requested to create a new password which will be used to access your **MedicAir Data App**. Type and then retype this password and press '**Sign up**'.
- ⑥ You will now be on the home screen of your **MedicAir Data App**. All of your devices from your MedicAir app (see pages 13-14) will be shown.

- ⑦ By default you will be on the home screen of the app (see step 7 picture on page 16). To see each of your devices listed out - press the button showing '**Total Active Units**'.
- ⑧ You can learn more about how to navigate the app and all of the functionality available at our YouTube Channel, simply search for '**MedicAir**' under the 'channels' section on YouTube.



Getting Started

- 1 Remove the protective foam lid out of the box, along with the power cord and remote.
- 2 Carefully lower the unit in the box to the ground, until it is horizontal.
- 3 Using the bubble sleeve within which the unit is located, slide the unit out of the box, being particularly cautious not to hold the unit by the top vents.
- 4 Connect the power cord at the bottom of the side of the unit. Plug the other end of the power cord into a power supply.
- 5 Press the glowing standby button located on the touch screen. Wait for the LED screen to scan the air quality within its surrounds and complete its boot-up process, at which stage the screen will stop flashing. At this point you can choose your wind speed (via the Fan Speed Button - ) or activate the ReAKT function (via the ReAKT button - ) .
- 6 Use the remote or touch screen to change settings at any time.
- 7 When leaving the room overnight - activate sleep mode (via the Sleep Mode Button - ) or switch off the unit (via the power button - ) and turn off power at the mains.



- A** Pre-filter, ATP-HEPA and carbon filter cartridge
- B** TiO2 catalyzed UV-C reaction chamber

Filters

A. Pre-filter, ATP-HEPA and Carbon filter cartridge

Pre-filter and ATP-HEPA antimicrobial peptide filter

This consists of an omni directional antimicrobial fibre mesh fabric capable of capturing and filtering large particles such as dust, hairs and skin flakes. This prolongs the lifespan of the HEPA filter and improves system efficiency.

The high-density ATP-HEPA H13 antimicrobial peptide filter removes the majority of airborne particulate matter with a mean aerodynamic diameter of 2.5 µm.

High-efficiency activated carbon layer

This is a large honeycomb-structured filter which works to remove harmful substances such as mercury and benzene. It can subsequently reduce odours in the room.

B. TiO2 catalyzed UV-C reaction chamber

By way of a 24-Watt UVC bulb placed in the center of the reaction chamber, MedicAir is able to denature pathogens by damaging their RNA/DNA.

Please visit medicair.co.uk to buy high-performance combined filters.

'MedicAir' Mobile App Connection Instructions

- ① **Download** the 'MedicAir' app from either the Apple App Store or Google Play store.
- ② Once in the app you will be prompted to enter an email to set up an account. **Enter your chosen email.**
- ③ You will receive an email with a **confirmation code** - find this and then enter it when prompted on the MedicAir app.
- ④ You are now within the **MedicAir App**. Ensure you accept all requests from the app to use WiFi signal.
- ⑤ **Click the + logo** in the top right of the screen to add a new device.
- ⑥ Your app will default to 'Add Manually'. In the main body of the screen should be an 'Air Purifier' option - select this.

- ⑦ You will be prompted to **enter your wifi passcode** - enter this and **press NEXT**.
- ⑧ At this stage you should avert your attention to the MedicAir Air Purifier Unit. Tap the power button and turn off the machine. Wait for 2 seconds. Again tap this button to re-boot the unit. Wait for the whole screen to stop flashing (15-20 seconds).
- ⑨ **Press and hold** (for 5 seconds) the Wifi Logo Button (positioned on the touch screen).
- ⑩ The Wifi logo should then begin flashing rapidly on your MedicAir screen. At this point avert your attention back to the App and tick the box to confirm 'indicator blinking rapidly'. **Press NEXT**.
- ⑪ **Wait** whilst your unit connects. You do not need to interfere with this stage- let the unit do the work.

What to do if your unit won't connect:

- ① **Occasionally** a unit might fail to connect on the first try. The best way to mitigate this is to change the wifi you are using.
- ② **Complete** the process (from the step 5-11 again) but this time use a 'personal hotspot' wifi.
- ③ Your unit should then connect without problems.

Screen Display Introduction



Start Button

When the unit is first plugged into your power supply, this button will glow red indicating standby mode. To start the unit, tap this button and the unit will begin scanning the air quality within your indoor environment. MedicAir® will then default to the ReAKT setting, continually adjusting wind speed in order to achieve optimum air quality. This can be changed by pressing the Fan Speed button. To re-enter standby mode, simply press the Power button again.



ReAKT Button

When first powered on, the air purifier defaults to ReAKT mode. Within this mode MedicAir® will adjust fan speed in accordance with the air quality at that time in order to optimise air quality.



Fan Speed Button

Press the fan speed button on the control panel or relevant buttons on the remote to set the fan speed at your desired level: low, medium, high or max.



Sleep Mode Button

To put the unit into sleep mode, press the sleep button on the control panel or the remote control. During sleep mode the air purifier runs at the slowest speed and only the sleep button will light up on the control panel. To exit sleep mode, press any button (other than start) and the unit will return to the previous setting.



Lock/Timer Button

Press the timer button for 3 seconds and the red light will come on, indicating the air purifier will run in the child lock mode. If you press the button for another 3 seconds the light will go off, the unit will exit this mode and all other buttons will be unlocked. For full timer setting instructions see page 17.



UV Lamp Button

MedicAir by default will activate its UV capability when turned on. The UV functionality can be toggled on and off by pressing the UV button. When toggled on, the UV button will illuminate, and when off, will appear dim.

Changing The MedicAir® Filter Cartridge



Prepare for the changing of the filter cartridge by wearing gloves and dispose of the old filter in line with local recommendations.



UV radiation can be harmful to the eyes and skin. Do not operate UVC-emitter outside the appliance.



Turn off the power on the unit and disconnect from the power supply.



Gently lie the unit down on the ground taking care to not handle the unit by the top vent.



Carefully twist the lid off the bottom of the unit (by twisting anti-clockwise) and lift the lid off.



Disconnect the wire that connects the filter cartridge and the MedicAir unit by unclipping at the connector (this is tucked down the side of the unit between the inside of the unit and outside of the filter).



Slide the old filter out of the unit and dispose of it appropriately.



Slide the new filter cartridge into the base of the unit with the solid base positioned nearest the bottom of the unit.



Connect the wire from the base of the new filter cartridge to the unit via the wire connector and tuck this wire in the gap between the inside of the unit and the outside of the new filter.



Carefully replace the removable lid (twisting clockwise).



Stand your MedicAir back up so the LED touchscreen faces the ceiling.



Reconnect the power supply and power on the machine.



Press and hold the sleep button for five seconds to recalibrate the unit with the new filter.



Your device is now ready to use as normal.



+44 (0)1932 553023 |



hello@medicair.co.uk

