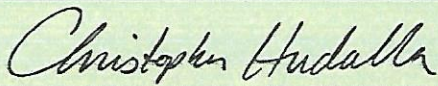


Certificate ID: 21726
 Client Sample ID: **Extra Strength Active CBD oil tincture U**
 Matrix: **Tincture - Vegetable Glycerin**
 Date Received: **9/29/2017**

 DiscoverCBD
 Colorado Springs, CO
 Attn: Levi

This test method was performed in accordance with the requirements of ISO/IEC 17025. These results relate only to the test article listed in this report. Reports may not be reproduced except in their entirety.

| | | |
|--|--|--------------------|
| Authorization: Chris Hudalla, Chief Science Officer | Signature:  | Date: 10/9/2017 |
|--|--|--------------------|

CN: Cannabinoid Profile & Potency [WT-10-04]

Analyst: JFD

Test Date: 10/5/2017

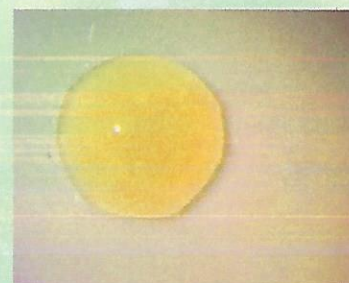
The client sample was analyzed for plant-based cannabinoids by Convergence Chromatography (CC). The collected data was compared to data collected for certified reference standards at known concentrations.

21726-CN

249.6mg CBD/30ml
 Actual volume of product in bottle is >35ml
Actual Contents
291.2mg Active CBD/Bottle

| | | | | | | | | | |
|-----------------|------|------|------|-----|-----|-----|------|------|------|
| - | - | 0.66 | - | - | - | - | - | - | - |
| Δ^9 -THC | THCV | CBD | CBDV | CBG | CBC | CBN | THCA | CBDA | CBGA |

| ID | Weight % | Conc. |
|-----------------|-----------------|-------------------|
| Δ^9 -THC | - | - |
| THCV | - | - |
| CBD | 0.66 wt % | 8.32 mg/mL |
| CBDV | 0.01 wt % | 0.09 mg/mL |
| CBG | - | - |
| CBC | - | - |
| CBN | - | - |
| THCA | - | - |
| CBDA | - | - |
| CBGA | - | - |
| Total | 0.67 wt% | 8.42 mg/mL |
| Max THC | - | - |
| Max CBD | 0.66 wt% | 8.32 mg/mL |



Max THC (and Max CBD) are calculated values for total cannabinoids after heating, assuming complete decarboxylation of the acid to the neutral form. It is calculated based on the weight loss of the acid group during decarboxylation: $\text{Max THC} = (0.877 \times \text{THCA}) + \text{THC}$.