

Test Certificate No.: 151-002556

Sample: RSHO 022415 Filtered *Blue*

Matrix: Hemp Paste

HempMeds **Px**
Your Trusted CBD Source

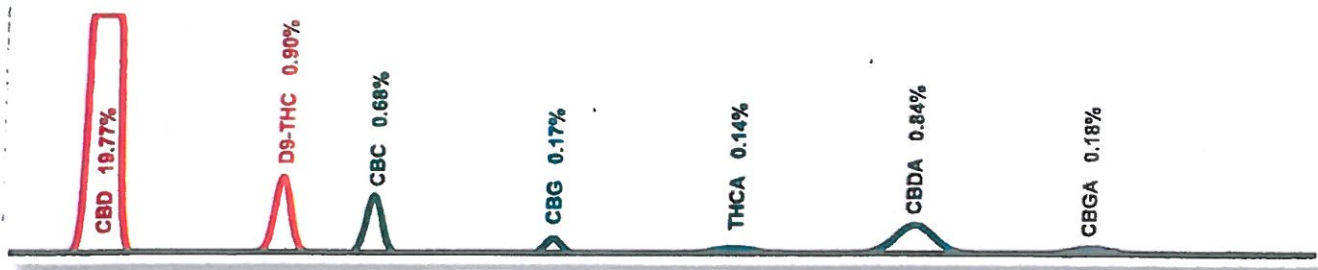
Date Received: 2/25/2015

Test Date: 3/1/2015

Technician: NML

CANNABINOID PROFILE [Procedure WI-10-04]:

This test method was performed in accordance with the requirements of ISO/IEC 17025. These results relate only to the test article listed in this report. Reports may not be reproduced except in their entirety.

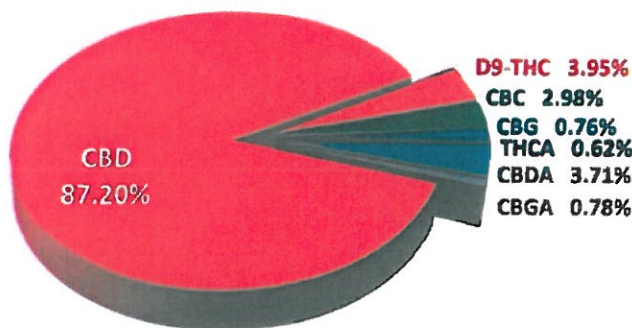


Test	Weight %	Conc.
CBD	19.77%	197.71 mg/g
Δ8-THC	< 0.01%	< 0.01 mg/g
Δ9-THC	0.90%	8.96 mg/g
CBC	0.68%	6.77 mg/g
CBN	< 0.01%	< 0.01 mg/g
CBG	0.17%	1.72 mg/g
THCA	0.14%	1.41 mg/g
CBDA	0.84%	8.41 mg/g
CBGA*	0.18%	1.76 mg/g
Other	< 0.01%	< 0.01 mg/g
Max THC	1.02%	10.19 mg/g
Max CBD	20.51%	205.09 mg/g
Total Active	21.52%	215.16 mg/g
Total	22.67%	226.74 mg/g

*CBGA values are semi-quantitative, based on analyte response relative to THCA.

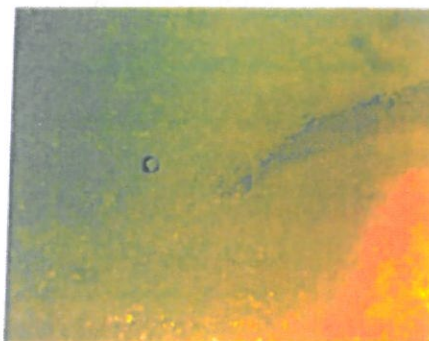
- CBD
- D8-THC
- D9-THC
- CBC
- CBN
- CBG
- THCA
- CBDA
- CBGA
- Other

Total Cannabinoid



VISUAL AND MICROSCOPIC INSPECTION [Procedure WI-10-03]:

Inspection Comments: None



ProVerde Laboratoires, Inc.
420 Fortune Blvd.
Milford, MA 01757
617.221.3356

Authorization:

Christopher Hudalla, CSO

Date

Signature:

Christopher Hudalla

3/2/2015