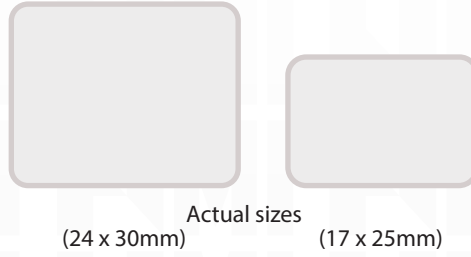


NON-RESORBABLE MEMBRANES (100% Medical Grade PTFE)

PTFE MEMBRANE

Characteristics

- Non-resorbable
- Withstands exposure
- Biocompatible
- Easily trimmed to desired shape



Actual sizes
(24 x 30mm) (17 x 25mm)

Product Code	Size	#/Box	Type	List*
O105	(24x30mm)	5	PTFE	\$359
O205	(17x25mm)	5	PTFE	\$269



TITANIUM RE-INFORCED MEMBRANE

Characteristics

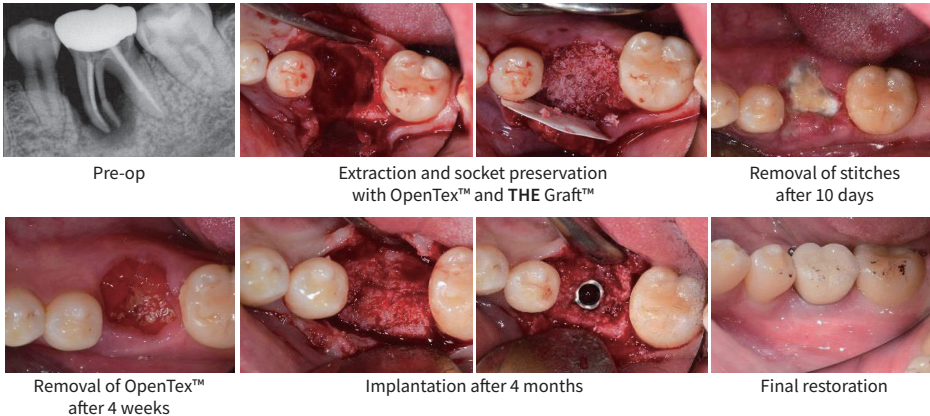
- Non-resorbable
- Withstands exposure
- Biocompatible
- Easily trimmed to desired shape
- Mold & shape for tenting and space maintenance

Product Code	Size	#/Box	Type	List*
TR P01	(17x25mm)	single	PS	\$179
TR P02	(24x30mm)	single	PL	\$199
TR P03	(17x25mm)	single	B	\$149
TR P05	(12x24mm)	single	AN	\$109
TR P06	(14x24mm)	single	AS	\$139
TR P07	(30x40mm)	single	XL	\$249



Case Study OpenTex™ and THE Graft™ Extraction Socket

A 35 year old female patient with a vertically fractured mesial root on #36. Radiographic examination revealed severe loss within extraction socket and around the fractured root. An extraction socket preservation was decided to be carried out before implant placement. OpenTex™ membrane and THE Graft™ were placed and favourable healing of defected lesion could be seen radiographically after 7 months.



Pre-op

Extraction and socket preservation
with OpenTex™ and THE Graft™

Removal of sutures
after 10 days

Removal of OpenTex™
after 4 weeks

Implantation after 4 months

Final restoration

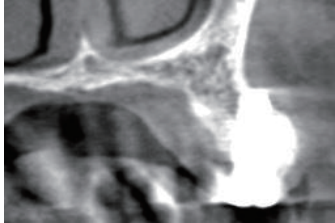


HESIRA™
MED INC



Case Study OpenTex™ and THE Graft™ Fenestration Defect

A 61 year old female patient presented for implant placement to replace missing teeth. Fenestration defect could be recognized on the CT scan at the apex of the tooth and GBR was performed as a treatment option.



CT after #25 implantation



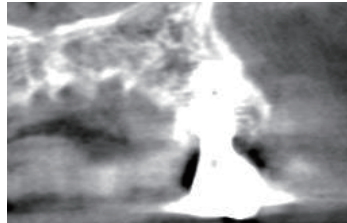
Lateral approach grafting on fenestration site



CT after GBR



Removal of stitches after 10 days



CT 5-month post-op



Final restoration

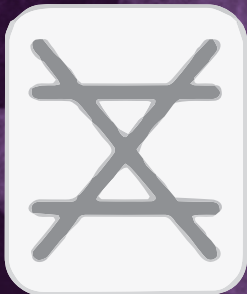
Non-Resorbable Titanium Membrane

PTFE Layer

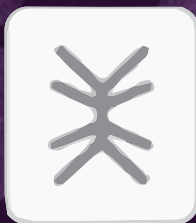
100% Medical Grade
PTFE membrane

Pure Titanium

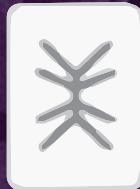
Strong and Highly Malleable
Reinforcement



XL
(30 x 40 mm)



PL
(24 x 30 mm)



PS
(17 x 25 mm)



B
(17 x 25 mm)



AS
(14 x 24 mm)



AN
(12 x 24 mm)

Actual sizes

OpenTex® can be ordered online at HesiraMed.com



HesiraMed.com | info@hesiramed.com | 844-HESIRA-1

MKT027

*Prices subject to change